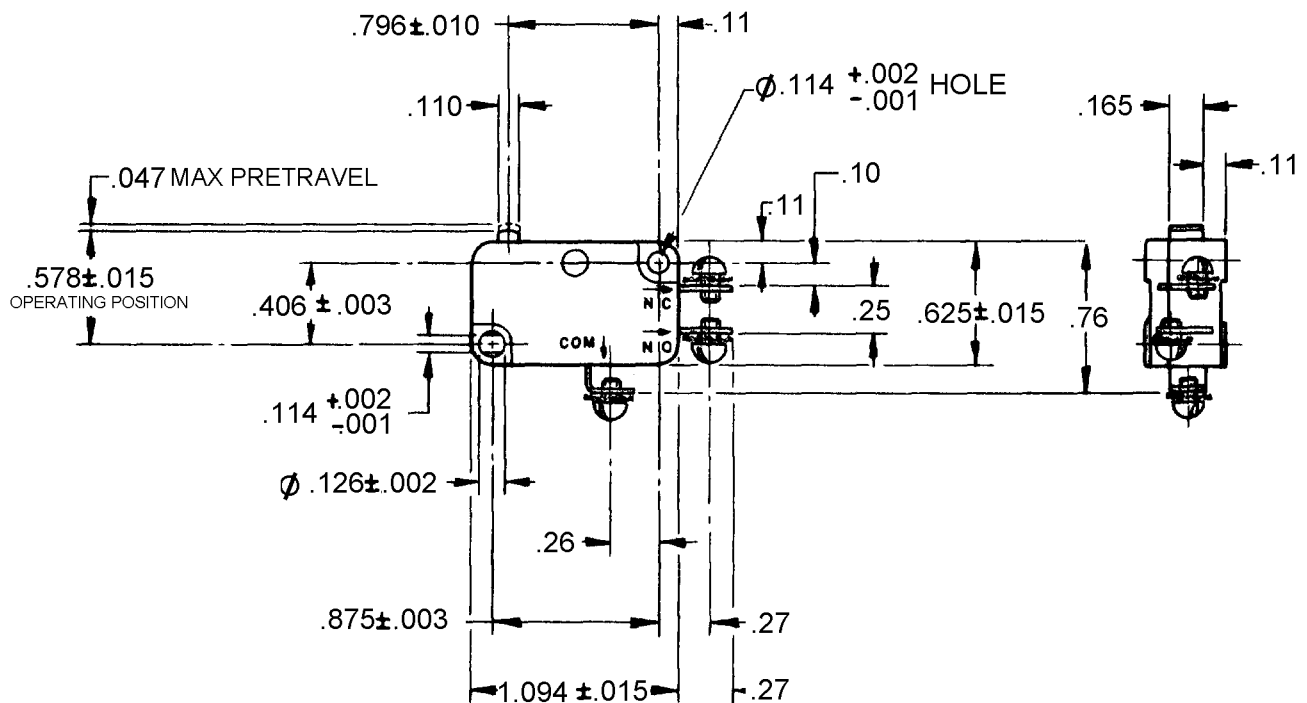
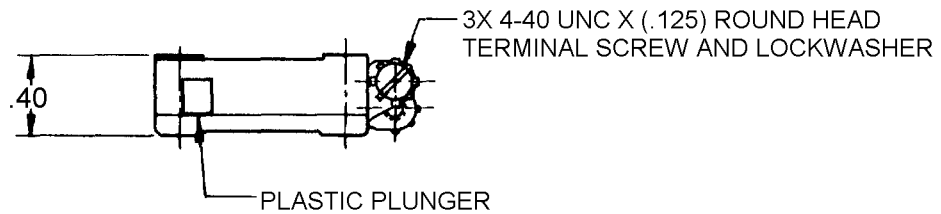


**MICRO SWITCH**FREEPORT, ILLINOIS, U.S.A.  
A DIVISION OF HONEYWELL  
FED. MFG. CODE 91929**SWITCH - BASIC**

CATALOG LISTING

**V3-1201**MILITARY STDS PART NO.  
M8805/90-001**CK-N1201****NOTE**1 - "M8805/90-001" AND SOURCE CODE "91929" MARKED ON SWITCH  
AND LABEL OF PACKING BOX

ANSI Y14.5M-1982 APPLIES

THIS DRAWING COVERS A PROPRIETARY ITEM AND IS THE PROPERTY OF MICRO SWITCH, A DIVISION OF  
HONEYWELL. THIS DRAWING IS NOT TO BE COPIED OR USED WITHOUT THE APPROVAL OF MICRO SWITCH.**CHARACTERISTICS**OPERATING FORCE-----75 GRAM MAX  
RELEASE FORCE-----10 GRAM MIN  
DIFFERENTIAL TRAVEL-----.002-.010  
OVERTRAVEL-----.050 MIN  
FREE POSITION-----.625 MAX  
RELEASE TRAVEL-----.010 MIN**ELECTRICAL DATA**CONTACT ARRANGEMENT  
S P D T**SCALE FULL**

DO NOT SCALE PRINT

UNLESS OTHERWISE  
NOTED

DIMENSIONS ARE IN INCHES

**TOLERANCES ARE:**ONE PLACE (.0)  $\pm$ .030  
TWO PLACE (.00)  $\pm$ .015  
THREE PLACE (.000)  $\pm$ .005  
ANGLES  $\pm$ 

WEIGHT 9.1 GRAMS

**V3-1201**

PAGE 1 OF 1

REPLACES

PR-2340

RELEASE NO.

**M**DRAWING  
NUMBER

X

X

X

X

X

X

X

X

X

X

X

X

X

X

X

X

X

X

X

X

X

X

X

X

X

X

FO-50378-1A

DRAWN

CHECK

CHECK

CHECK

DRAWN

# Mouser Electronics

Authorized Distributor

Click to View Pricing, Inventory, Delivery & Lifecycle Information:

[Honeywell:](#)

[V3-1201](#)