

PART NUMBER
2455RD-71610949

REVISION HISTORY					
REV	DOCUMENT	DESCRIPTION	CHG'D BY	DATE	APPROVED
A	0111343	INITIAL RELEASE	MKB	2014-06-11	M.K. SENTHIL

SWITCH TYPE: SPST
RESET TYPE: MANUAL
CONTACT SYSTEM: OPEN ON RISE

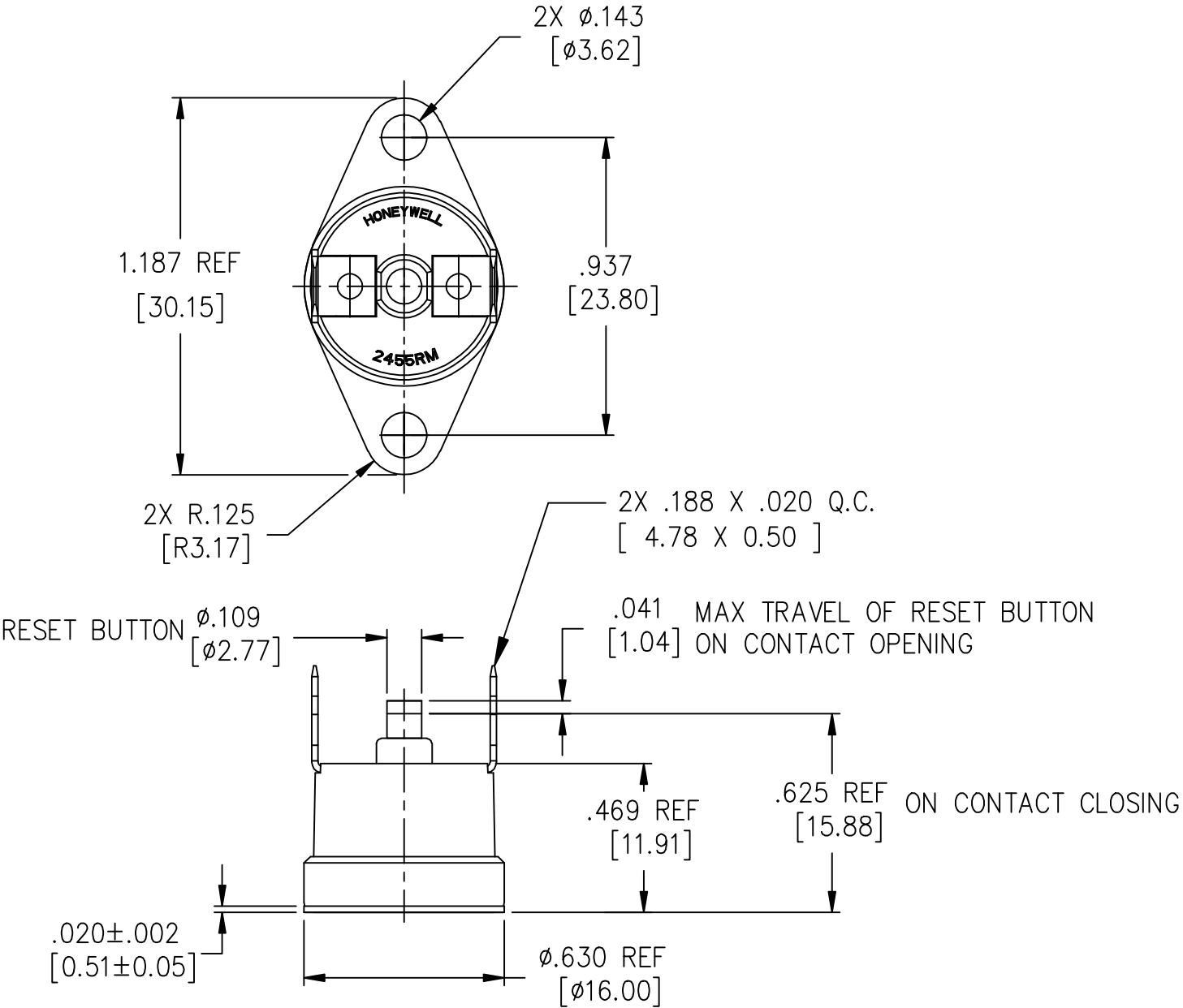
1 - TEMPERATURE CHARACTERISTIC
OPEN TEMPERATURE: 60°C±5°C
CLOSE TEMPERATURE: MANUAL RESET
*MANUAL RESET OPERATION NOT TO BE PERFORMED ABOVE 70%
OF THE OPERATING TEMP

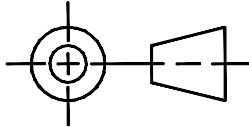
2 - ELECTRICAL RATINGS
AMPERAGE: 15 A RESISTIVE AT 6,000 CYCLES (UL);
16 A RESISTIVE AT 1000 CYCLES (EU)
CONTACT RATINGS
LIFE CYCLES 120 VAC 240 VAC
6000 15 A RESISTIVE 10 A RESISTIVE

3 - COMPONENT DETAILS
CAP: STAINLESS STEEL
TERMINAL STYLE: T150
 : BRASS
BASE: 2455RD PHENOLIC
CONTACTS: SILVER ALLOY
BRACKET STYLE: B201A - STAINLESS STEEL

4 - CODING REQUIREMENTS
L60C 2455RD 7161 949 NYRWK

5 - WEIGHT: 6 g [0.2 OZ] (DOES NOT INCLUDE BRACKET OR WIRE ASSEMBLY)



UNLESS OTHERWISE SPECIFIED DIMENSIONS ARE IN INCHES		THIRD ANGLE PROJECTION		<div>Honeywell</div>			
DECIMAL TOL 1 PLACE --- ±.030 2 PLACE --- ±.010 3 PLACE --- ±.005 ANGULAR TOL - ±2° CHAMFER - ±5°				TITLE <div>THERMOSTAT</div>			
MATERIAL SEE NOTE 3		SIZE B	CAGE CODE —	DWG NO <div>50099493</div>		TYPE I	REV A
FINISH		SCALE NONE		REF WT: SEE NOTE 5		SHEET 1 Of 1	
APPLICABLE DOCUMENTS: ASME Y14.100–2004 ASME Y14.5–2009		RELEASE DATE		2014–06–11		<div>HONEYWELL CONFIDENTIAL</div> <div>THIS DOCUMENT CONTAINS PROPRIETARY INFORMATION AND SUCH INFORMATION MAY NOT BE DISCLOSED TO OTHERS FOR ANY PURPOSE, NOR USED FOR MANUFACTURING PURPOSE'S WITHOUT WRITTEN PERMISSION FROM HONEYWELL</div>	
		DRW: B. MANJESH		2014–06–11			
		RDE: M.K. SENTHIL		2014–06–11			
		QA: LI. SOFIA		2014–06–11			
		CHK: S. RAGHU		2014–06–11			
COMPUTER GENERATED DRAWING: AutoCAD							

Mouser Electronics

Authorized Distributor

Click to View Pricing, Inventory, Delivery & Lifecycle Information:

[Honeywell:](#)

[2455RD 71610949](#)