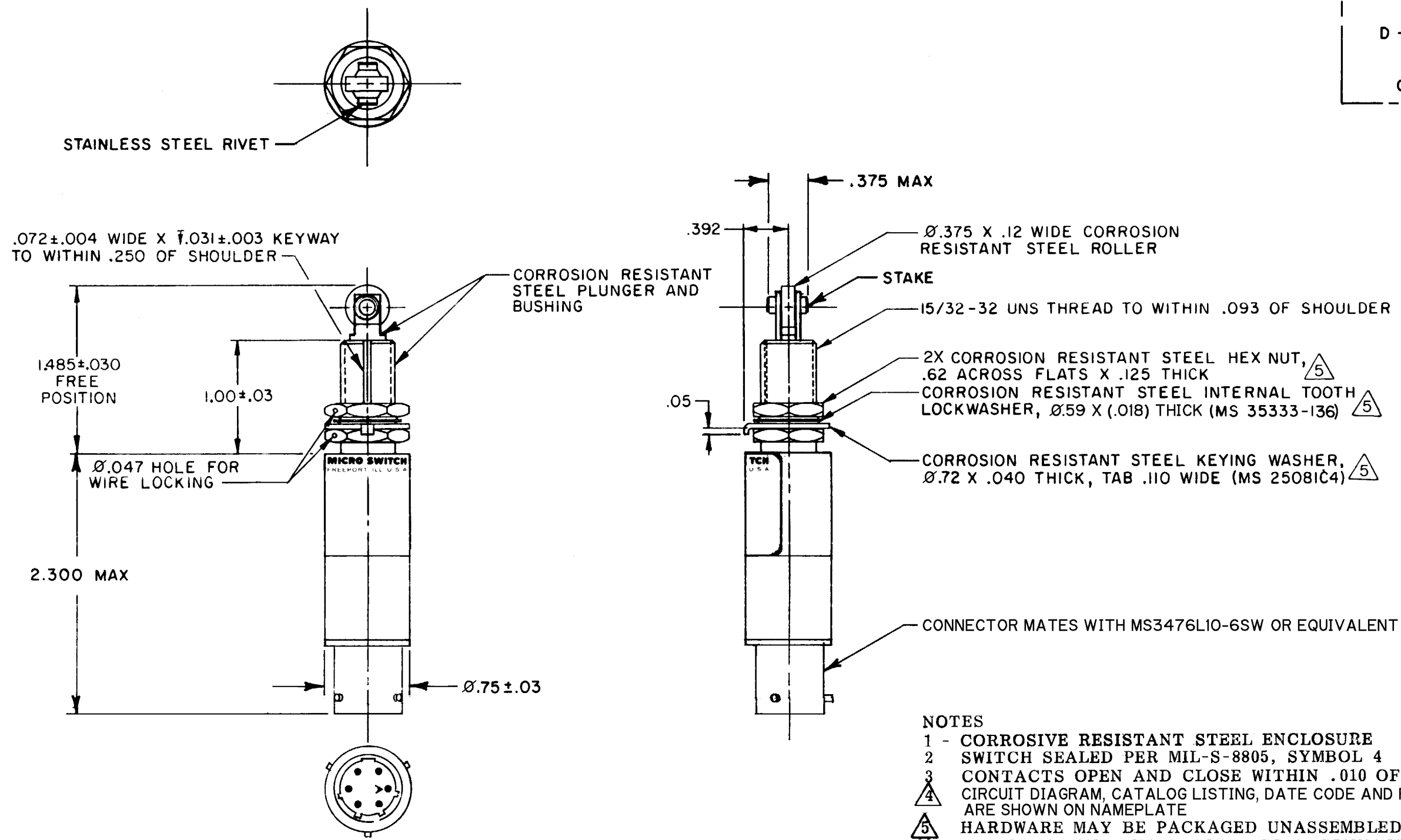
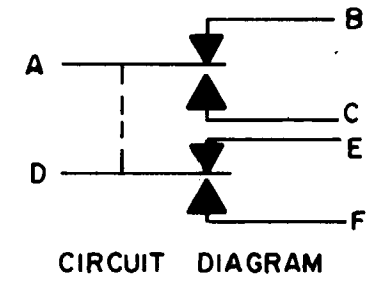


CATALOG LISTING  
622EN82-RB  
PAGE 1 OF 1  
REPLACES  
PR-12639  
CHECK  
10 JAN 84  
KJS  
FORMTEK  
DRAWN  
JUN 84  
KJS

**MICRO SWITCH**  
FREEPORT, ILLINOIS, U.S.A.  
A DIVISION OF HONEYWELL  
FED. MFG. CODE 91929

**SWITCH-ENCLOSED**

CATALOG LISTING  
**622EN82-RB**



- NOTES**
- 1 - CORROSIVE RESISTANT STEEL ENCLOSURE
  - 2 SWITCH SEALED PER MIL-S-8805, SYMBOL 4
  - 3 CONTACTS OPEN AND CLOSE WITHIN .010 OF PLUNGER TRAVEL
  - 4 CIRCUIT DIAGRAM, CATALOG LISTING, DATE CODE AND FEDERAL MFG. CODE ARE SHOWN ON NAMEPLATE
  - 5 HARDWARE MAY BE PACKAGED UNASSEMBLED PER MIL-S-8805
  - 6 BASIC SWITCHES HAVE SOLID GOLD CONTACT MATERIAL

|   |           |            |   |              |
|---|-----------|------------|---|--------------|
| THIS DRAWING COVERS A PROPRIETARY ITEM AND IS THE PROPERTY OF MICRO SWITCH, A DIVISION OF HONEYWELL. THIS DRAWING IS NOT TO BE COPIED OR USED WITHOUT THE APPROVAL OF MICRO SWITCH. |           |            | SCALE FULL  |              |
| CHARACTERISTICS   |           |            | DO NOT SCALE PRINT  |              |
| OPERATING FORCE ——— 6-12 LB   |           |            | TOLERANCES  |              |
| FULL OVERTRAVEL FORCE ——— 30 LB MAX   |           |            | APPLY TO DESIGN UNITS. CONVERSIONS ARE ONLY FOR REFERENCE. UNLESS NOTED, TOLERANCES ARE ± |              |
| RELEASE FORCE ——— 4 LB MIN  |           |            | DIM.  | TOL.         |
| PRETRAVEL ——— .040 MAX  |           |            | mm/in   | mm/in        |
| DIFFERENTIAL TRAVEL ——— .020 MAX  |           |            | NO PLACES X   | 1/.04        |
| OVERTRAVEL ——— .125 MIN   |           |            | ONE PLACE X,X   | 0.4/.015     |
|   |           |            | TWO PLACES X,X,X  | 0.15/.006    |
|   |           |            | THREE PLACES X,X,X,X  | 0.8/.03      |
|   |           |            | ANGLES  | 0.38/.015    |
|   |           |            |   | 0.13/.005    |
|   |           |            | DESIGN UNITS  | US CUSTOMARY |
|   |           |            | THIRD ANGLE PROJECTION  |              |
|   |           |            | WEIGHT 7 OZ MAX   |              |
| ELECTRICAL DATA   |           |            |   |              |
| CONTACT ARRANGEMENT   |           |            |   |              |
| 2X S P D T  |           |            |   |              |
| 28 VDC  |           |            |   |              |
| LOAD  | SEA LEVEL | 50,000 FT. |   |              |
| RES   | I         | I          |   |              |
| IND   | .5        | .5         |   |              |
| MOTOR   |           |            |   |              |

ANSI Y14.5M-1982 APPLIES

# Mouser Electronics

Authorized Distributor

Click to View Pricing, Inventory, Delivery & Lifecycle Information:

[Honeywell:](#)

[622EN82-RB](#)