

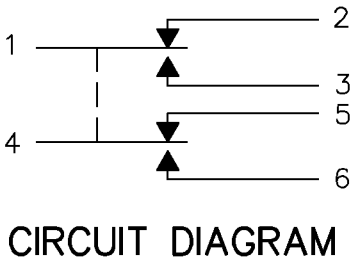
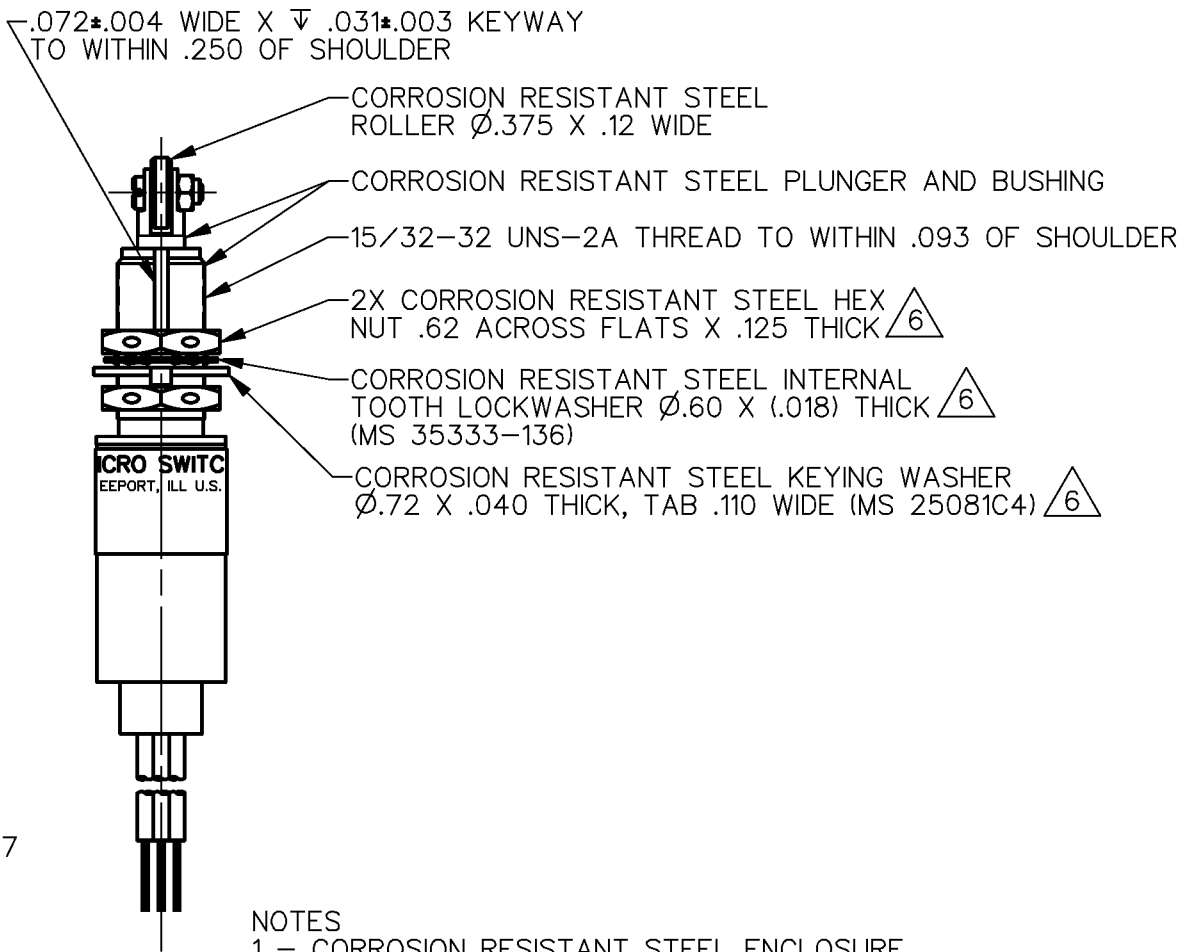
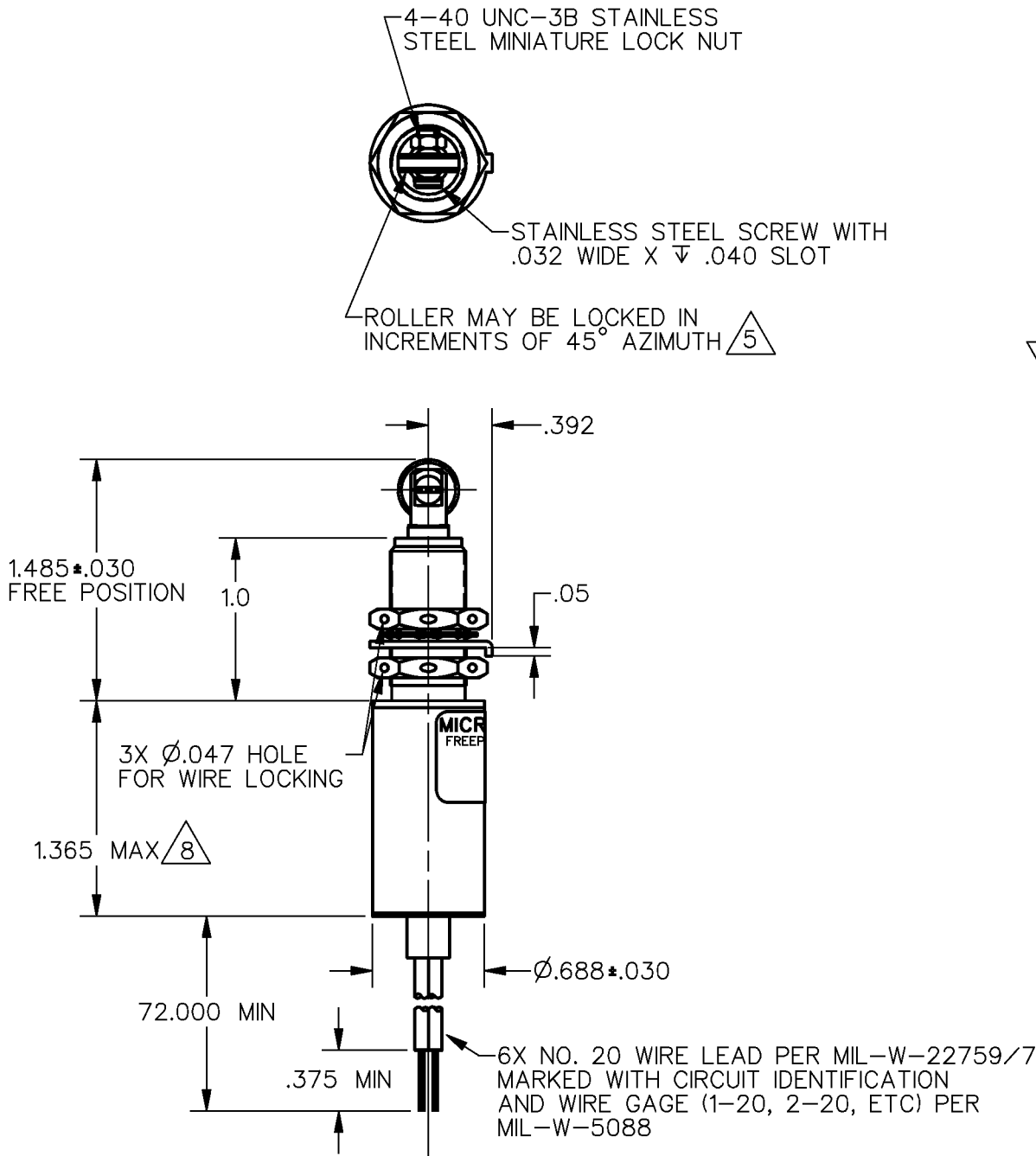
CATALOG LISTING  
622EN227-6B  
PAGE 1 OF 1  
RELEASE NO. PR-22884  
REPLACES

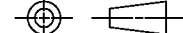

ISSUE  
3

REVISIONS

DDM/CAD  
DRAWN

T S M  
13 JUL 97  
CHECK  
S A V  
14 JUL 97  
CHECK



THIS DRAWING COVERS A PROPRIETARY ITEM AND IS THE PROPERTY OF MICRO SWITCH, A DIVISION OF HONEYWELL. THIS DRAWING IS NOT TO BE COPIED OR USED WITHOUT THE APPROVAL OF MICRO SWITCH			THIRD ANGLE PROJECTION 	
CHARACTERISTICS		ELECTRICAL DATA		SCALE FULL
OPERATING FORCE — — — — 6 —12 LB		CONTACT ARRANGEMENT		DO NOT SCALE PRINT
FULL OVERTRAVEL FORCE --- 30 LB MAX		2X S P D T 		
RELEASE FORCE — — — — — 4 LB MIN		28 VDC		UNLESS OTHERWISE SPECIFIED TOLERANCES ARE
PRETRAVEL — — — — — .040 MAX		LOAD		
DIFFERENTIAL TRAVEL — — — .020 MAX		SEA LEVEL	50,000 FT.	
OVERTRAVEL — — — — — — .125 MIN		RES	1	
		IND	0.5	
				ONE PLACE ( .0 ) ±.030
				TWO PLACE ( .00 ) ±.015
				THREE PLACE ( .000 ) ±.005
				ANGLES ±
				WEIGHT

- NOTES
- 1 - CORROSION RESISTANT STEEL ENCLOSURE
- 2 - SWITCH SEALED PER MIL-S-8805 SYMBOL 4
- 3 - COINCIDENCE OF OPERATING AND RELEASING POINTS: .010 OF PLUNGER TRAVEL
- 4 - CIRCUIT DIAGRAM, DATE CODE, FED. MFG. CODE AND CATALOG LISTING SHOWN ON NAMEPLATE
- $\triangle 5$  TO ADJUST ROLLER DIRECTION, REMOVE LOCK NUT, SCREW, AND ROLLER. DEPRESS PLUNGER UNTIL IT CAN BE ROTATED TO DESIRED POSITION. RETURN PLUNGER TO FREE POSITION AND REASSEMBLE ROLLER
- $\triangle 6$  HARDWARE MAY BE PACKAGED UNASSEMBLED PER MIL-S-8805
- $\triangle 7$  BIFURCATED GOLD CONTACT BASIC SWITCHES
- $\triangle 8$  THIS DIMENSION EXCLUDES THE POTTING MATERIAL ON THE BOTTOM OF THE SWITCH

ANSI Y14.5M-1982 APPLIES

# Mouser Electronics

Authorized Distributor

Click to View Pricing, Inventory, Delivery & Lifecycle Information:

[Honeywell:](#)

[622EN227-6B](#)