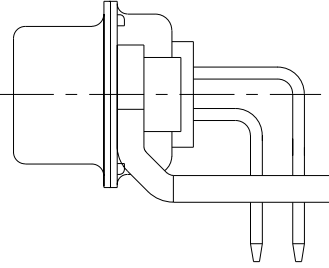
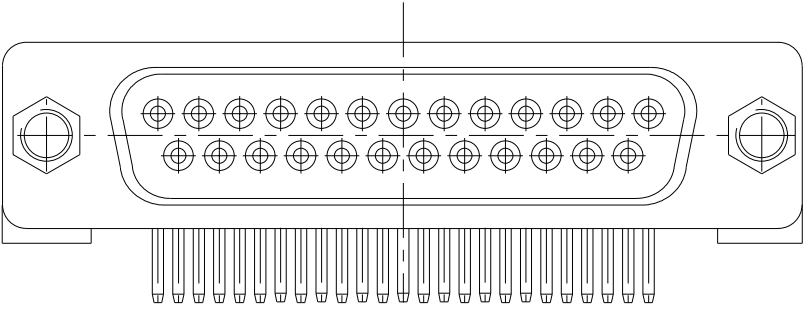
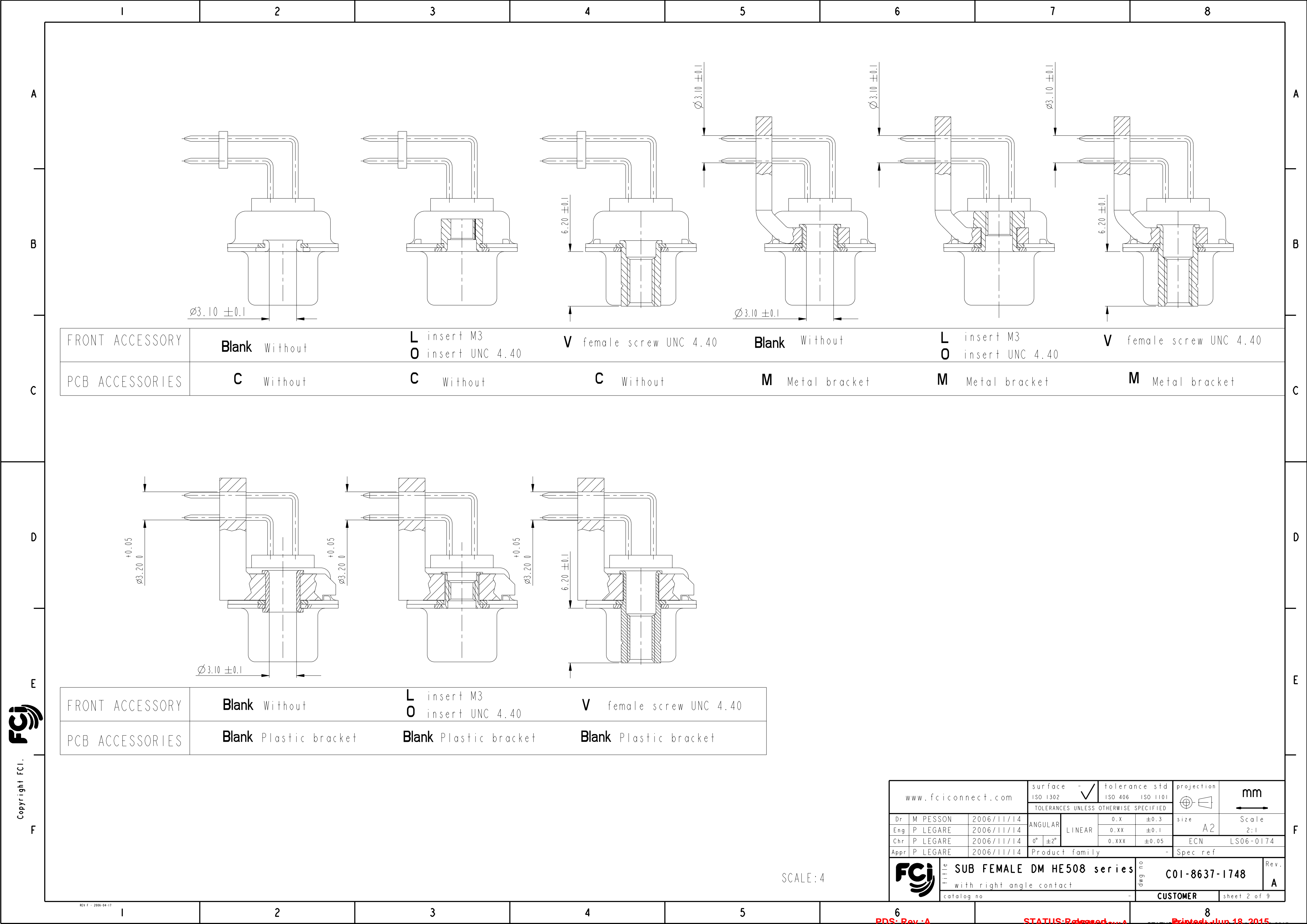


	I	2	3	4	5	6	7	8																																																																																																										
A	<div>REFERENCE SPECIFICATIONS</div> <div>-NFC 93425 (in compliance with HE 508)</div> <div>PHYSICAL CHARACTERISTICS</div> <div>-INSULATOR MATERIAL: THERMOSET UL94V0</div> <div>-CONTACT MATERIAL: BRASS GOLD OVER NICKEL</div> <div>-ACCESSORIES: STEEL FOR METAL BRACKETS Cadmium plated, yellow passivation THERMOPLASTIC UL94V0 FOR PLASTIC BRACKETS</div> <div>BRASS FOR OTHERS ACCESSORIES Cadmium plated, yellow passivation</div> <div>-SHELLS: STEEL Cadmium plated, yellow passivation</div> <div>ELECTRICAL CHARACTERISTICS</div> <div>-NOMINAL CURRENT: 7.5A</div> <div>-CONTACT RESISTANCE: &lt;=7.3 m Ohms</div> <div>-CONTACT/CONTACT : &gt;=1000 V</div> <div>-CONTACT/GROUND : &gt;=1200 V</div> <div>-INSULATION RESISTANCE: &gt;=5000 MOhms</div> <div>ENVIRONMENTAL CHARACTERISTICS</div> <div>- CLIMATIC CATEGORY: 55/155/56</div> <div>TEMPERATURE RANGE -55°C TO +155°C</div> <div>DAMP HEAT STEADY STATE 56 DAYS</div> <div>SALT SPRAY 48 HOURS</div> <div>MECHANICAL CHARACTERISTICS</div> <div>RETENTION AGAINST TORQUE: -Threaded insert:0.7 N.m min</div> <div>-Female screw:0.5 N.m min</div>			<div>Series</div> <div>DBML25S500MN</div> <div>Shell size: E A B C D (see sheet 3)</div> <div>Front accessory definition (see sheet 2)</div> <div>Blank :without accessory</div> <div>L :threaded insert M3</div> <div>O :threaded insert UNC 4-40</div> <div>V :female screw UNC 4-40</div> <div>Layout of contacts (see sheet 3)</div> <div>9,15,25,37,50</div> <div>Contacts</div> <div>S :Socket</div> <div>Termination type</div> <div>5 Right angle/Europe standard</div> <div>Plating</div> <div>00 Right angle 500 matings/unmatings</div> <div>43 Right angle 500 matings/unmatings for harsh environment</div> <div>PCB accessories definition(see sheet 2)</div> <div>Blank :Plastic brackets</div> <div>C :Without brackets</div> <div>M :Metal brackets</div> <div>Obligatory for HE508</div>					A																																																																																																									
B									B																																																																																																									
C									C																																																																																																									
D									D																																																																																																									
E				<div></div> <div>25 WAY FOR EXAMPLE</div> <table><tr><td>rev</td><td>ecn no</td><td>dr</td><td>date</td></tr><tr><td>A</td><td>LS06-0174</td><td>MPE</td><td>2006/11/14</td></tr><tr><td>-</td><td>-</td><td>-</td><td>-</td></tr><tr><td>-</td><td>-</td><td>-</td><td>-</td></tr><tr><td>-</td><td>-</td><td>-</td><td>-</td></tr><tr><td>-</td><td>-</td><td>-</td><td>-</td></tr><tr><td>-</td><td>-</td><td>-</td><td>-</td></tr><tr><td>-</td><td>-</td><td>-</td><td>-</td></tr></table> <table><tr><td>Dr</td><td>M PESSON</td><td>2006/11/14</td></tr><tr><td>Eng</td><td>P LEGARE</td><td>2006/11/14</td></tr><tr><td>Chr</td><td>P LEGARE</td><td>2006/11/14</td></tr><tr><td>Appr</td><td>P LEGARE</td><td>2006/11/14</td></tr></table> <table><tr><td>surface</td><td>-</td><td>tolerance std</td><td>ISO 1302</td><td>ISO 406</td><td>ISO 1101</td><td>projection</td><td>mm</td></tr><tr><td colspan="4">TOLERANCES UNLESS OTHERWISE SPECIFIED</td><td colspan="2"></td><td></td><td></td></tr><tr><td>ANGULAR</td><td>LINEAR</td><td>0.X</td><td>±0.3</td><td>size</td><td>A2</td><td>Scale</td><td>2:1</td></tr><tr><td>0° ±2°</td><td></td><td>0.XX</td><td>±0.1</td><td colspan="2">ECN</td><td colspan="2">LS06-0174</td></tr><tr><td colspan="4">Product family</td><td colspan="2">-</td><td colspan="2">Spec ref</td></tr></table> <table><tr><td>FCi</td><td>title</td><td>SUB FEMALE DM HE508 series</td><td>dwg no</td><td>C01-8637-1748</td><td>Rev.</td><td>A</td></tr><tr><td colspan="3">with right angle contact</td><td colspan="2"></td><td colspan="2"></td></tr><tr><td colspan="3">catalog no</td><td colspan="2">-</td><td colspan="2">CUSTOMER</td></tr></table>					rev	ecn no	dr	date	A	LS06-0174	MPE	2006/11/14	-	-	-	-	-	-	-	-	-	-	-	-	-	-	-	-	-	-	-	-	-	-	-	-	Dr	M PESSON	2006/11/14	Eng	P LEGARE	2006/11/14	Chr	P LEGARE	2006/11/14	Appr	P LEGARE	2006/11/14	surface	-	tolerance std	ISO 1302	ISO 406	ISO 1101	projection	mm	TOLERANCES UNLESS OTHERWISE SPECIFIED								ANGULAR	LINEAR	0.X	±0.3	size	A2	Scale	2:1	0° ±2°		0.XX	±0.1	ECN		LS06-0174		Product family				-		Spec ref		FCi	title	SUB FEMALE DM HE508 series	dwg no	C01-8637-1748	Rev.	A	with right angle contact							catalog no			-		CUSTOMER		E
rev	ecn no	dr	date																																																																																																															
A	LS06-0174	MPE	2006/11/14																																																																																																															
-	-	-	-																																																																																																															
-	-	-	-																																																																																																															
-	-	-	-																																																																																																															
-	-	-	-																																																																																																															
-	-	-	-																																																																																																															
-	-	-	-																																																																																																															
Dr	M PESSON	2006/11/14																																																																																																																
Eng	P LEGARE	2006/11/14																																																																																																																
Chr	P LEGARE	2006/11/14																																																																																																																
Appr	P LEGARE	2006/11/14																																																																																																																
surface	-	tolerance std	ISO 1302	ISO 406	ISO 1101	projection	mm																																																																																																											
TOLERANCES UNLESS OTHERWISE SPECIFIED																																																																																																																		
ANGULAR	LINEAR	0.X	±0.3	size	A2	Scale	2:1																																																																																																											
0° ±2°		0.XX	±0.1	ECN		LS06-0174																																																																																																												
Product family				-		Spec ref																																																																																																												
FCi	title	SUB FEMALE DM HE508 series	dwg no	C01-8637-1748	Rev.	A																																																																																																												
with right angle contact																																																																																																																		
catalog no			-		CUSTOMER																																																																																																													
F				<div>PDS: Rev :A</div> <div>STATUS: Released</div> <div>Printed: Jun 18, 2015</div>					F																																																																																																									
	I	2	3	4	5	6	7	8																																																																																																										



Copyright FCI.

www.fciconnect.com

surface

ISO 1302

✓

tolerance std

ISO 406

ISO 1101

projection

⊕

mm

TOLERANCES UNLESS OTHERWISE SPECIFIED

size

A2

Scale

2:1

Dr

M PESSON

2006/11/14

ANGULAR

0.X

±0.3

Eng

P LEGARE

2006/11/14

LINEAR

0.XX

±0.1

Chr

P LEGARE

2006/11/14

0° ±2°

0.XXX

±0.05

Appr

P LEGARE

2006/11/14

Product family

-

Spec ref

FCI

title

SUB FEMALE DM HE508 series

dwg no

C01-8637-1748

Rev.

A

with right angle contact

catalog no

-

CUSTOMER

sheet 2 of 9

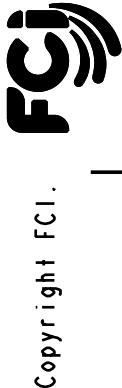
PART NUMBER	FRONT ACCESSORY	PCB ACCESSORY
D*MxxS500CN	without	without
D*MLxxS500CN	insert M3	without
D*MOxxS500CN	insert UNC 4.40	without
D*MVxxS500CN	female screw UNC 4.40	without
D*MxxS500MN	without	Metal bracket
D*MLxxS500MN	insert M3	Metal bracket
D*MOxxS500MN	insert UNC 4.40	Metal bracket
D*MVxxS500MN	female screw UNC 4.40	Metal bracket
D*MxxS500N	without	Plastic bracket
D*MLxxS500N	insert M3	Plastic bracket
D*MOxxS500N	insert UNC 4.40	Plastic bracket
D*MVxxS500N	female screw UNC 4.40	Plastic bracket


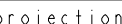


shell size	Contact number
*	XX
E	09
A	15
B	25
C	37
D	50

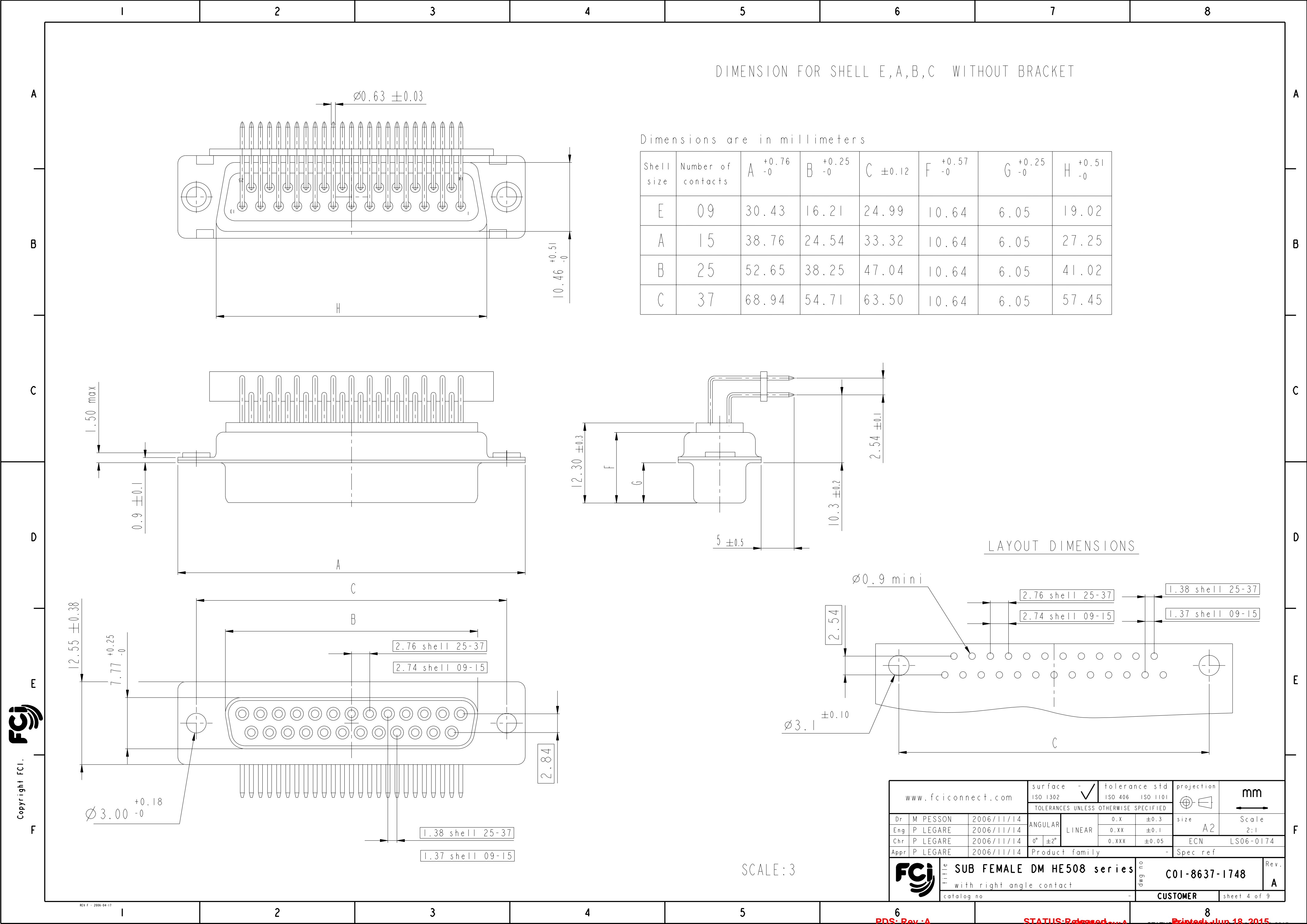
PART NUMBER	FRONT ACCESSORY	PCB ACCESSORY
D*MxxS543CN	without	without
D*MLxxS543CN	insert M3	without
D*MOxxS543CN	insert UNC 4.40	without
D*MVxxS543CN	female screw UNC 4.40	without
D*MxxS543MN	without	Metal bracket
D*MLxxS543MN	insert M3	Metal bracket
D*MOxxS543MN	insert UNC 4.40	Metal bracket
D*MVxxS543MN	female screw UNC 4.40	Metal bracket
D*MxxS543N	without	Plastic bracket
D*MLxxS543N	insert M3	Plastic bracket
D*MOxxS543N	insert UNC 4.40	Plastic bracket
D*MVxxS543N	female screw UNC 4.40	Plastic bracket

CROSS REFERENCES HE508 and FCI

HE508 P/N	FCI P/N	FRONT ACCESSORY	PCB ACCESSORY
HE508PxxVS6	D*MxxS500N	without	Plastic bracket
HE508MxxVS6	D*MxxS500MN	without	Metal bravket



www.fciconnect.com			surface -  ISO 1302		tolerance std ISO 406 ISO 1101		projection 		mm 	
			TOLERANCES UNLESS OTHERWISE SPECIFIED							
Dr	M PESSON	2006/11/14	ANGULAR	LINEAR	0.X ±0.3		size A2	Scale 2:1		
Eng	P LEGARE	2006/11/14			0.XX ±0.1			ECN LS06-0174		
Chr	P LEGARE	2006/11/14			0.XXX ±0.05					
Appr	P LEGARE	2006/11/14	Product family				-	Spec ref		
			SUB FEMALE DM HE508 series				C01-8637-1748		Rev. A	
with right angle contact										
catalog no							CUSTOMER		sheet 3 of 9	



DIMENSION FOR SHELL E,A,B,C WITHOUT BRACKET

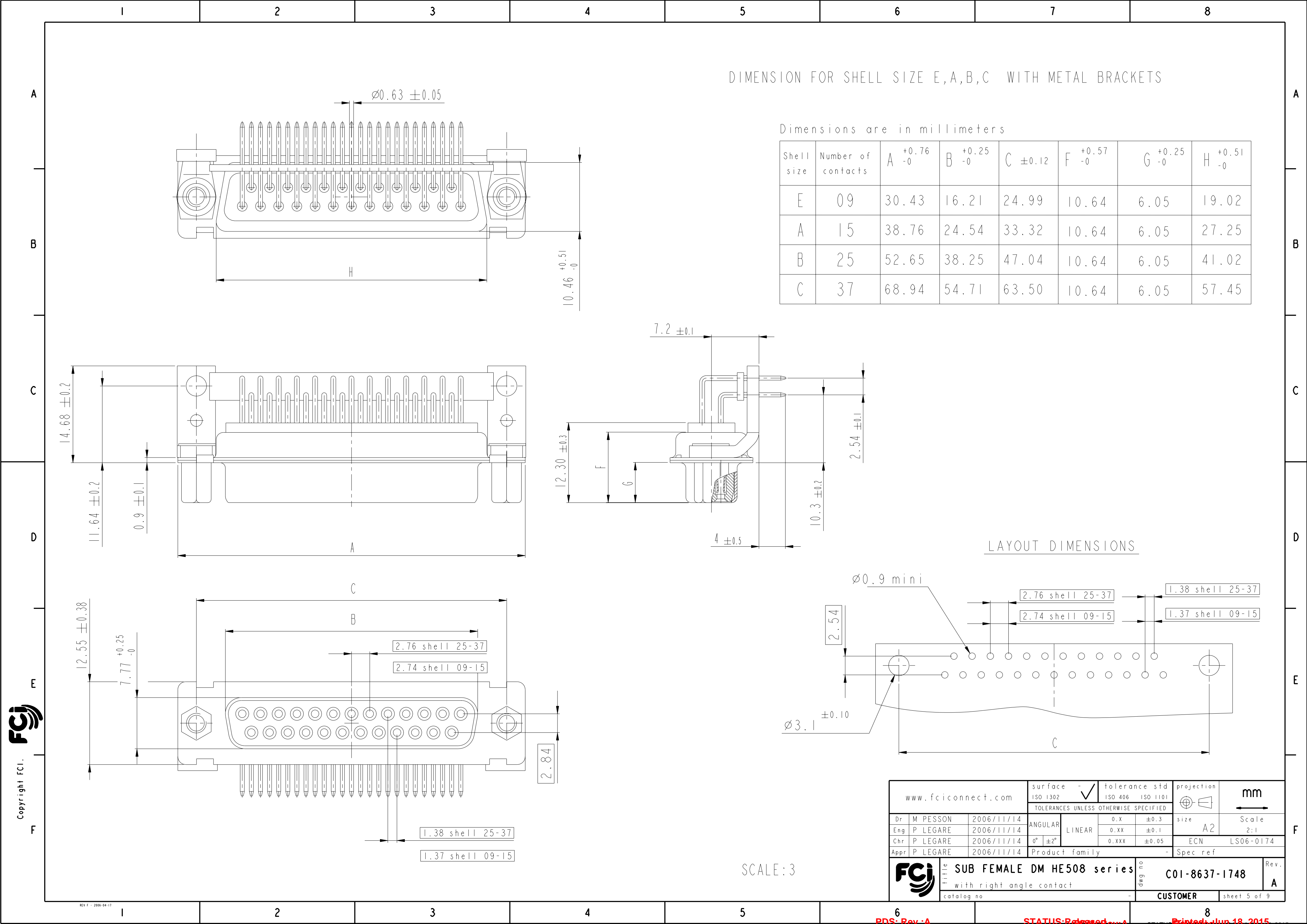
Dimensions are in millimeters

Shell size	Number of contacts	A <sup>+0.76 -0</sup>	B <sup>+0.25 -0</sup>	C <sup>±0.12</sup>	F <sup>+0.57 -0</sup>	G <sup>+0.25 -0</sup>	H <sup>+0.51 -0</sup>
E	09	30.43	16.21	24.99	10.64	6.05	19.02
A	15	38.76	24.54	33.32	10.64	6.05	27.25
B	25	52.65	38.25	47.04	10.64	6.05	41.02
C	37	68.94	54.71	63.50	10.64	6.05	57.45

LAYOUT DIMENSIONS

www.fciconnect.com			surface ISO 1302	-	tolerance std ISO 406	ISO 1101	projection ISO 1101	mm
			TOLERANCES UNLESS OTHERWISE SPECIFIED					
Dr	M PESSON	2006/11/14	ANGULAR	LINEAR	0.X	±0.3	size A2	Scale 2:1
Eng	P LEGARE	2006/11/14			0.XX	±0.1		
Chr	P LEGARE	2006/11/14	0°	±2°	0.XXX	±0.05	ECN	LS06-0174
Appr	P LEGARE	2006/11/14	Product family			-	Spec ref	
FCI			SUB FEMALE DM HE508 series			dwg no	C01-8637-1748	
			with right angle contact			Rev.	A	
			catalog no			-	CUSTOMER	sheet 4 of 9

Copyright FCI

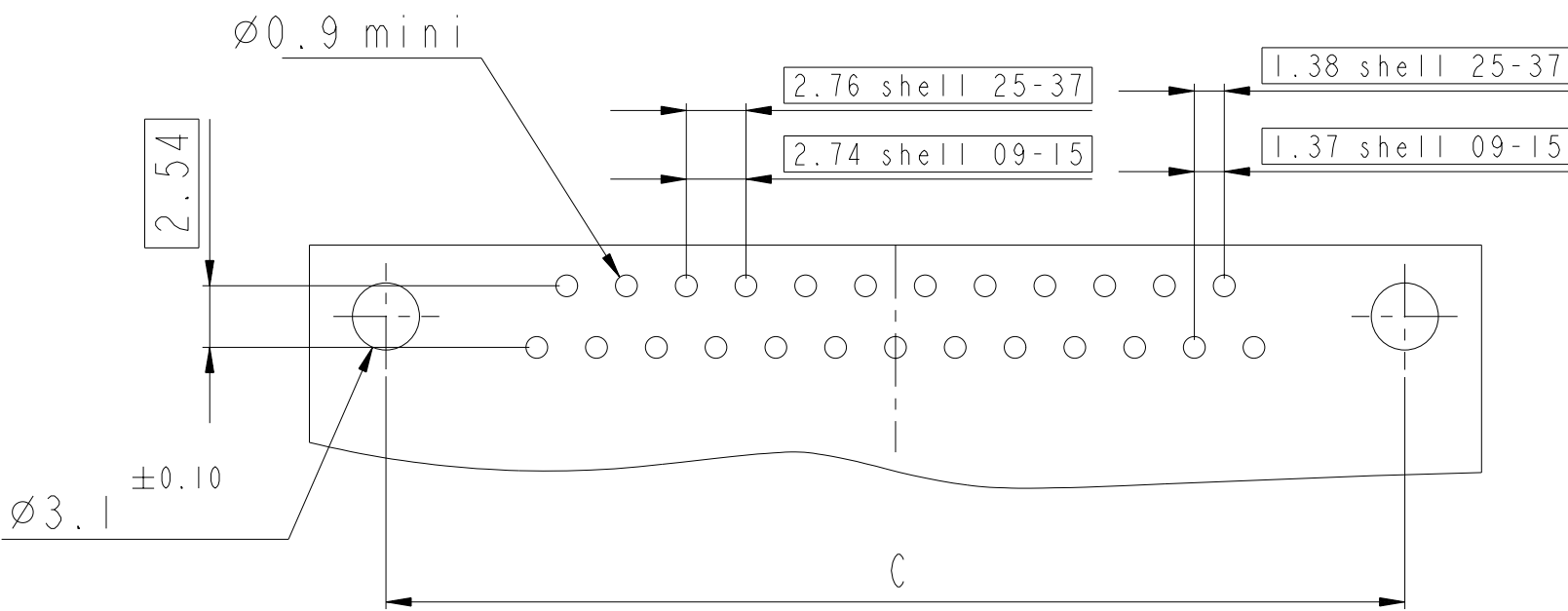


DIMENSION FOR SHELL SIZE E,A,B,C WITH METAL BRACKETS





Dimensions are in millimeters

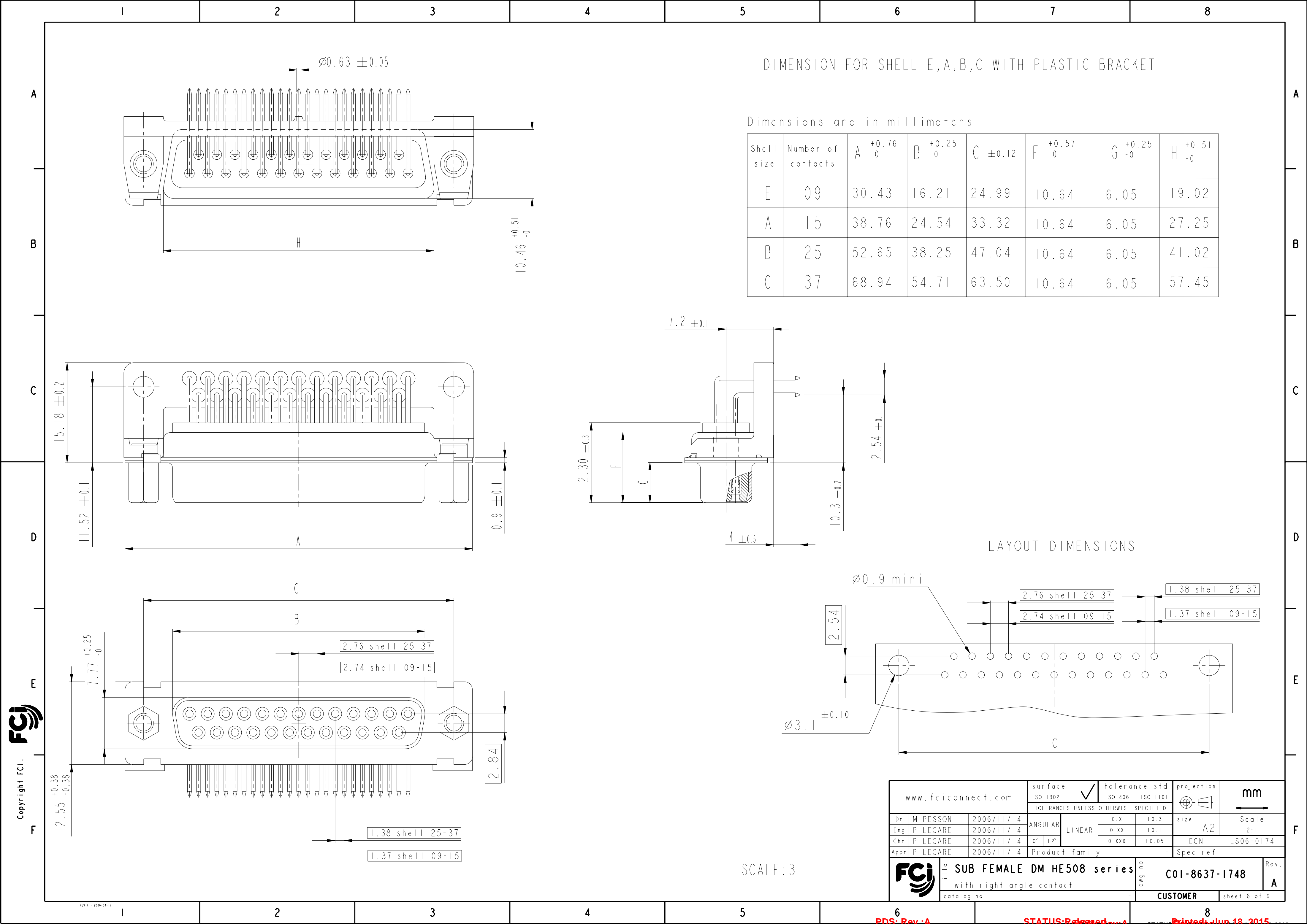
Shell size	Number of contacts	A <sup>+0.76 -0</sup>	B <sup>+0.25 -0</sup>	C <sup>±0.12</sup>	F <sup>+0.57 -0</sup>	G <sup>+0.25 -0</sup>	H <sup>+0.51 -0</sup>
E	09	30.43	16.21	24.99	10.64	6.05	19.02
A	15	38.76	24.54	33.32	10.64	6.05	27.25
B	25	52.65	38.25	47.04	10.64	6.05	41.02
C	37	68.94	54.71	63.50	10.64	6.05	57.45

LAYOUT DIMENSIONS



SCALE: 3

www.fciconnect.com			surface - 		tolerance std ISO 1302 ISO 406 ISO 1101		projection 		mm 		
			TOLERANCES UNLESS OTHERWISE SPECIFIED								
Dr	M PESSON	2006/11/14	ANGULAR	LINEAR	0.X ±0.3		size A2	Scale 2:1			
Eng	P LEGARE	2006/11/14			0.XX ±0.1						
Chr	P LEGARE	2006/11/14			0.XXX ±0.05						
Appr	P LEGARE	2006/11/14	0° ±2°				ECN		LS06-0174		
			Product family				-	Spec ref			
			SUB FEMALE DM HE508 series				dwg no		C01-8637-1748		Rev.
			with right angle contact								A
			catalog no				-	CUSTOMER		sheet 5 of 9	




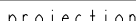


DIMENSION FOR SHELL E,A,B,C WITH PLASTIC BRACKET

Dimensions are in millimeters

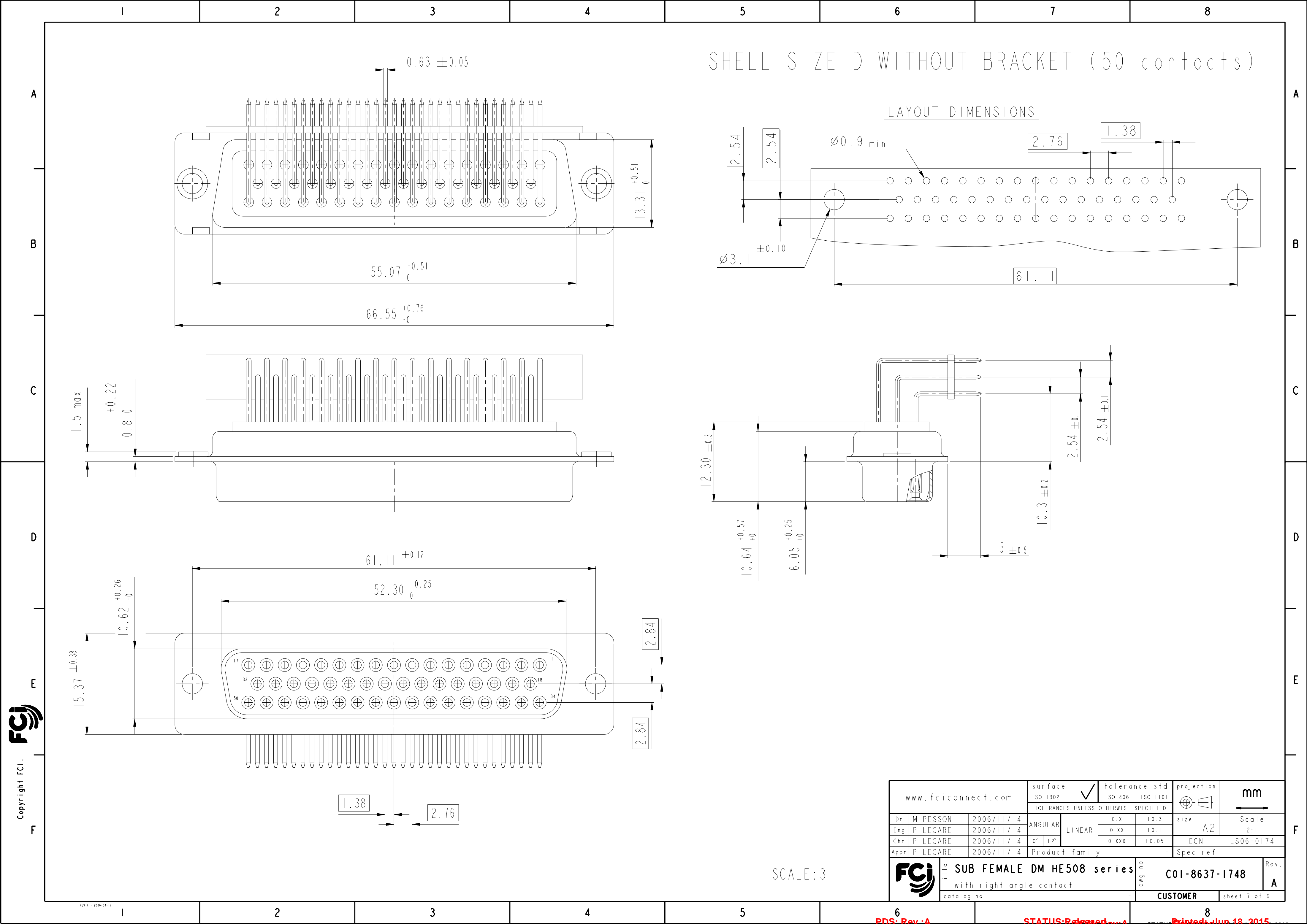
Shell size	Number of contacts	A <sup>+0.76 -0</sup>	B <sup>+0.25 -0</sup>	C <sup>±0.12</sup>	F <sup>+0.57 -0</sup>	G <sup>+0.25 -0</sup>	H <sup>+0.51 -0</sup>
E	09	30.43	16.21	24.99	10.64	6.05	19.02
A	15	38.76	24.54	33.32	10.64	6.05	27.25
B	25	52.65	38.25	47.04	10.64	6.05	41.02
C	37	68.94	54.71	63.50	10.64	6.05	57.45

LAYOUT DIMENSIONS

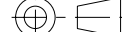


SCALE: 3

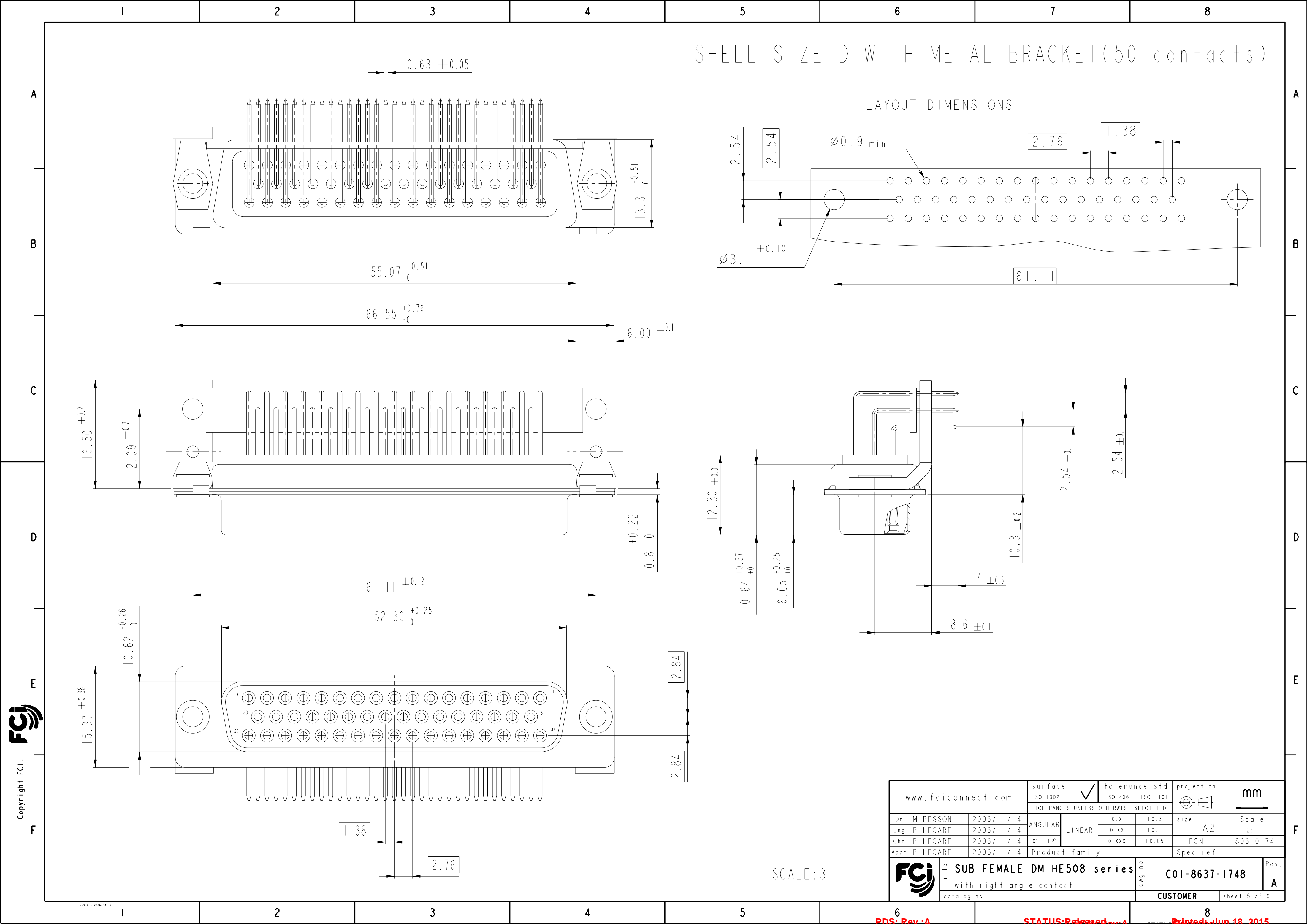
www.fciconnect.com			surface - 		tolerance std ISO 1302 ISO 406 ISO 1101		projection 		mm 		
			TOLERANCES UNLESS OTHERWISE SPECIFIED								
Dr	M PESSON	2006/11/14	ANGULAR	LINEAR	0.X ±0.3		size A2	Scale 2:1			
Eng	P LEGARE	2006/11/14			0.XX ±0.1						
Chr	P LEGARE	2006/11/14			0.XXX ±0.05						
Appr	P LEGARE	2006/11/14	0° ±2°				ECN		LS06-0174		
			Product family				-	Spec ref			
			SUB FEMALE DM HE508 series			C01-8637-1748		Rev.			
			with right angle contact					A			
			catalog no			-	CUSTOMER		sheet 6 of 9		





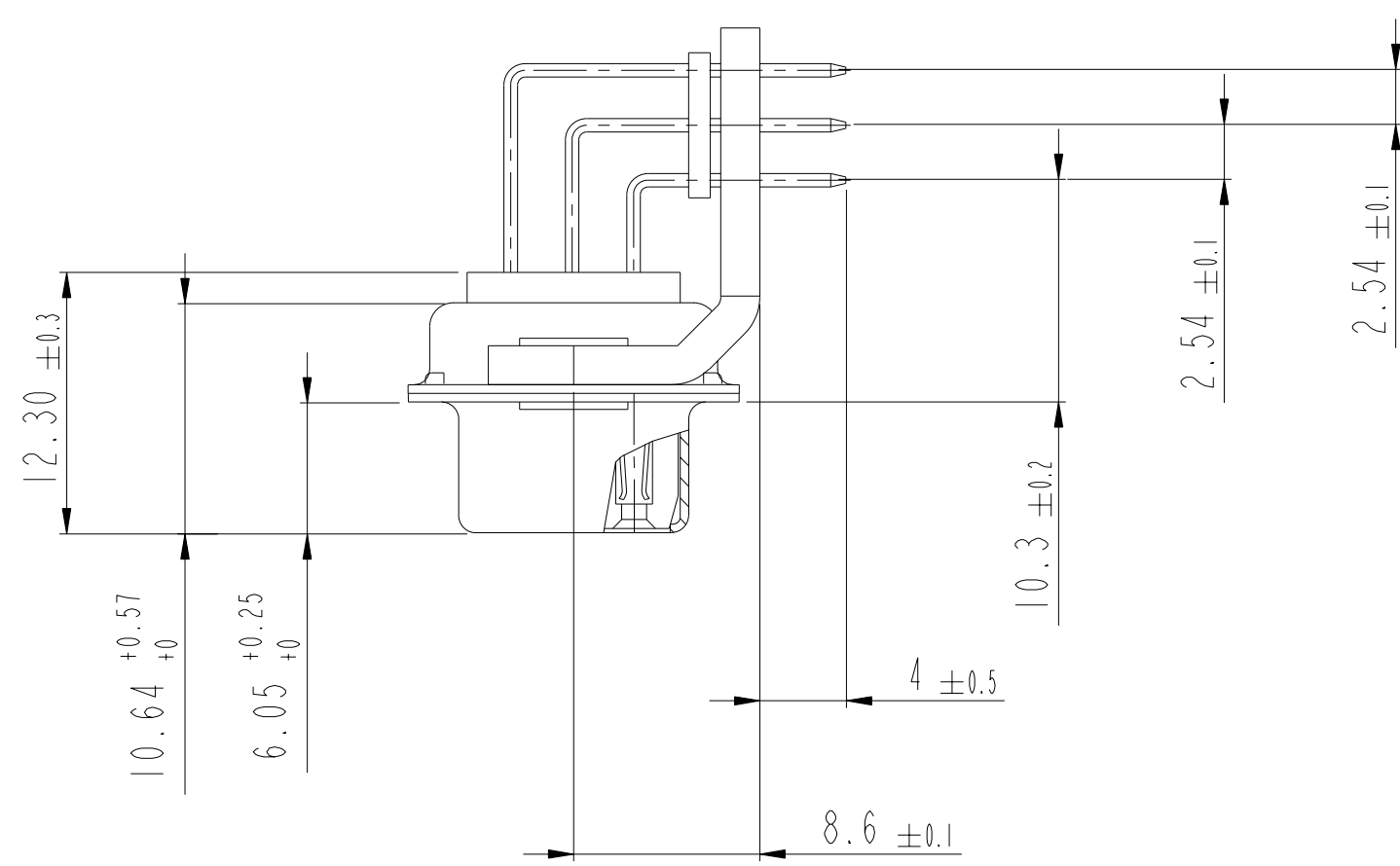
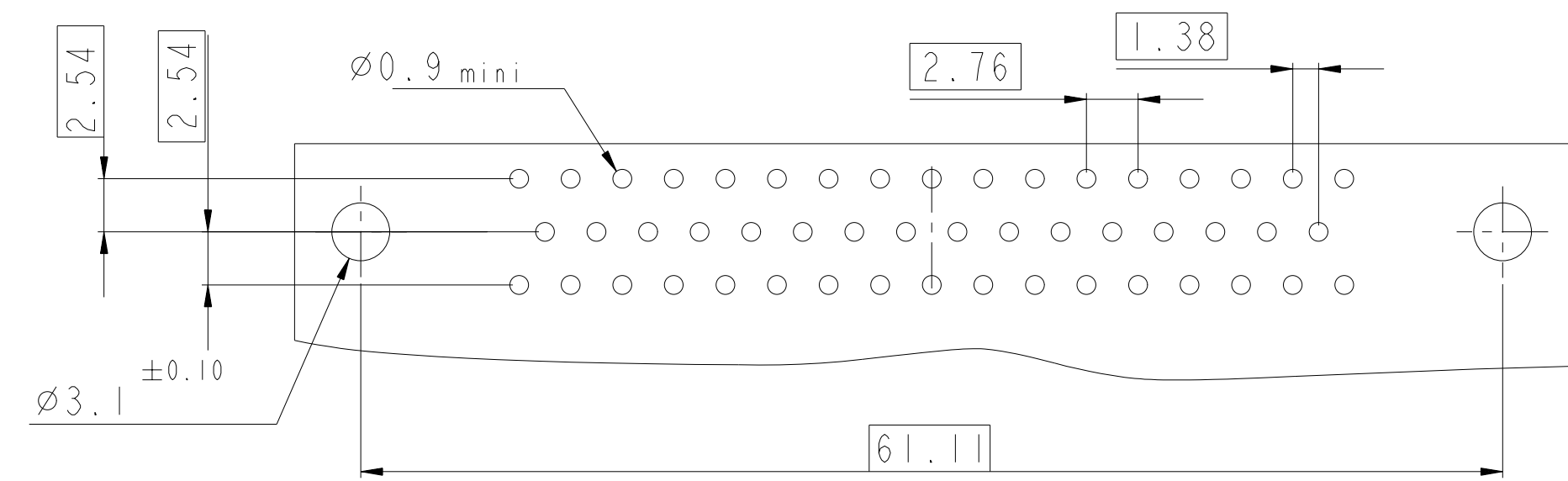
Copyright FCi.


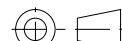



www.fciconnect.com			surface - <input checked="" type="checkbox"/> ISO 1302		tolerance std ISO 406 ISO 1101		projection 		mm 	
			TOLERANCES UNLESS OTHERWISE SPECIFIED							
Dr	M PESSON	2006/11/14	ANGULAR	LINEAR	0.X ± 0.3		size A2	Scale 2:1		
Eng	P LEGARE	2006/11/14			0.XX ± 0.1					
Chr	P LEGARE	2006/11/14			0.XXX ± 0.05			ECN LS06-0174		
Appr	P LEGARE	2006/11/14	Product family				-	Spec ref		
		title	SUB FEMALE DM HE508 series				dwg no	C01-8637-1748		Rev.
			with right angle contact					A		
			catalog no					-	CUSTOMER	sheet 7 of 9



SHELL SIZE D WITH METAL BRACKET(50 contacts)

LAYOUT DIMENSIONS

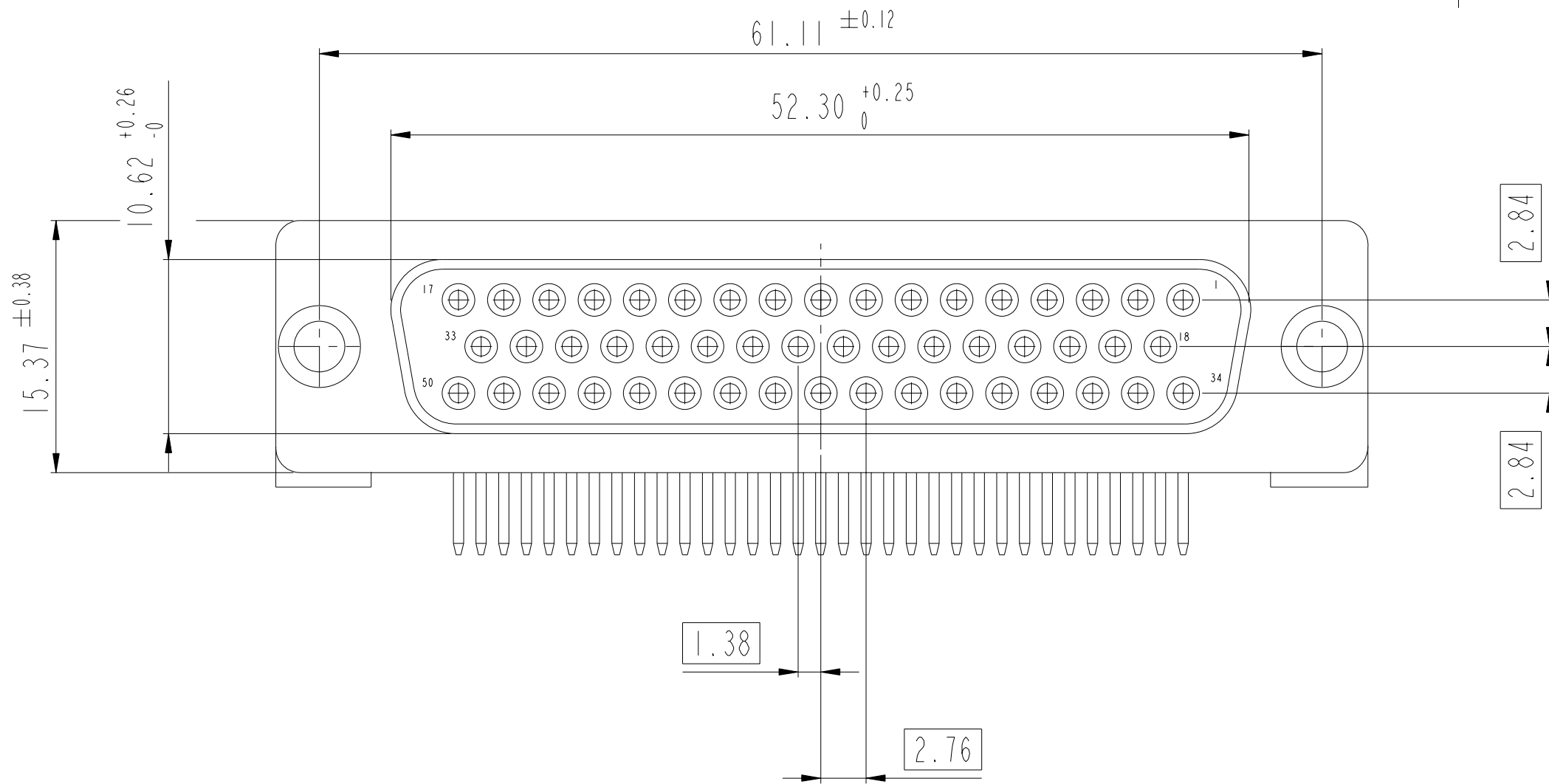
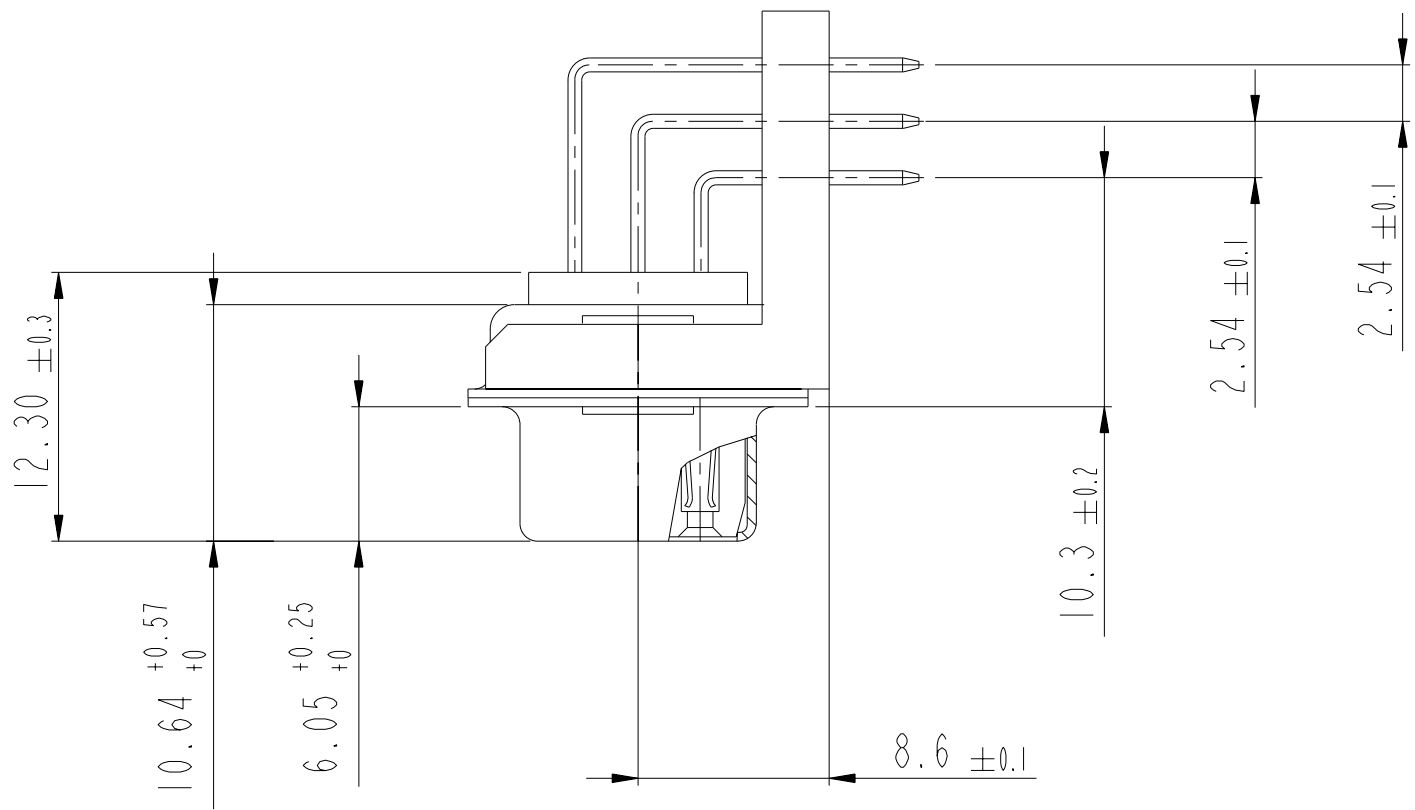
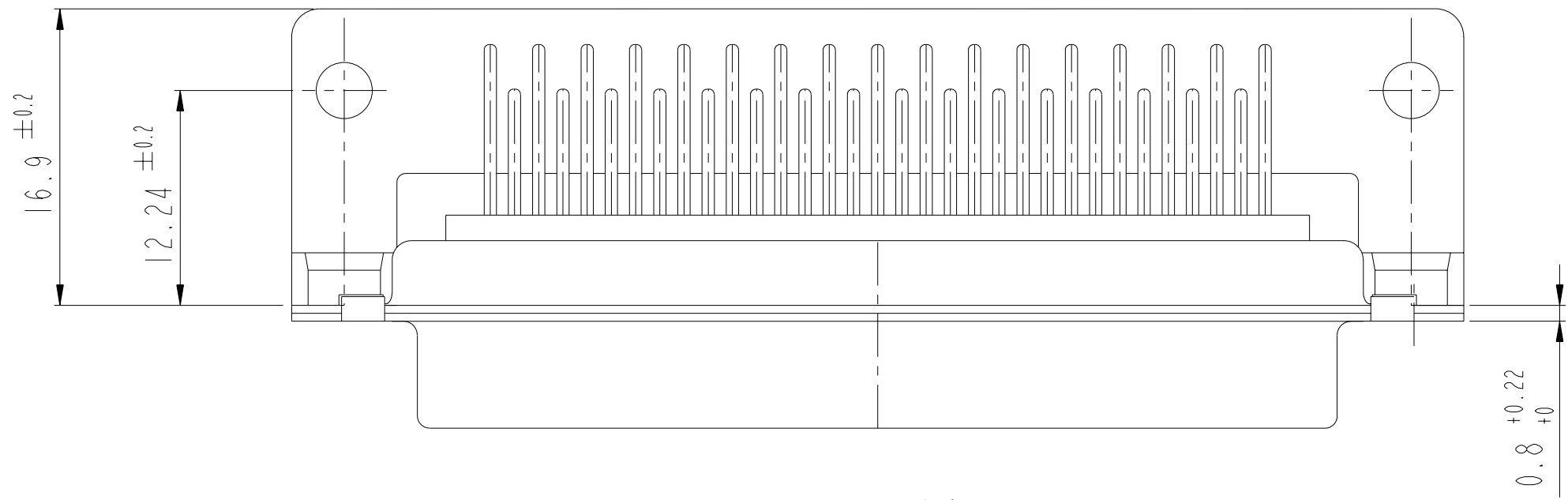
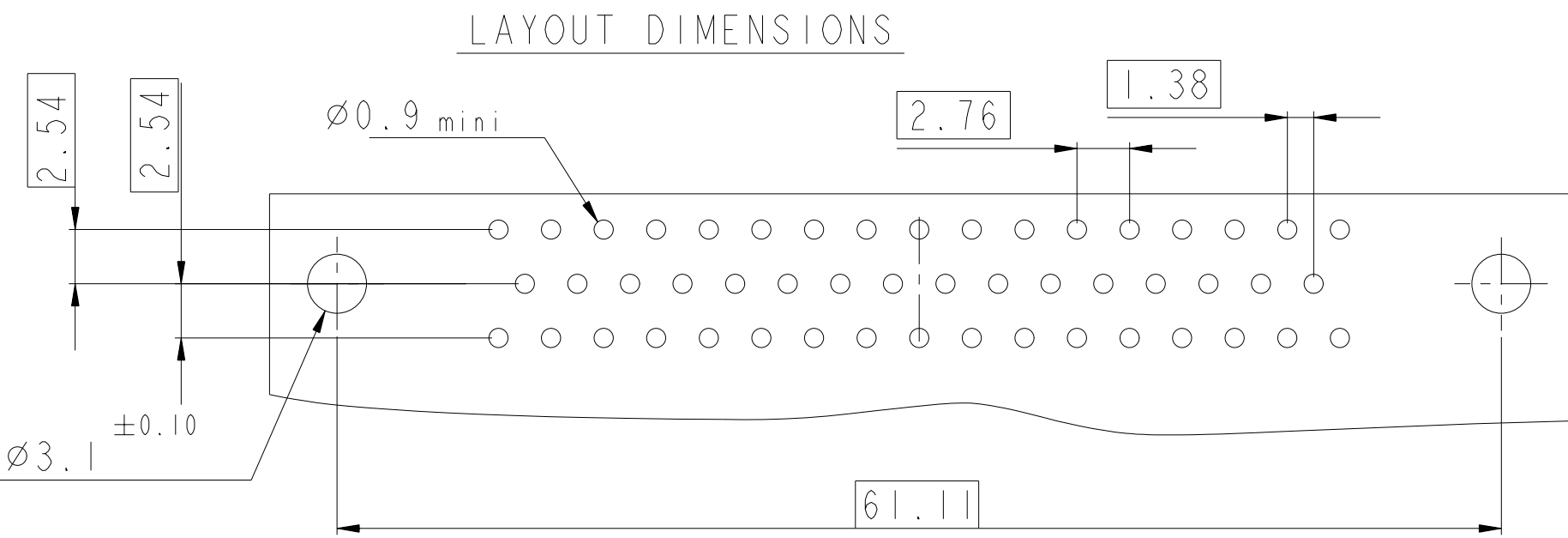
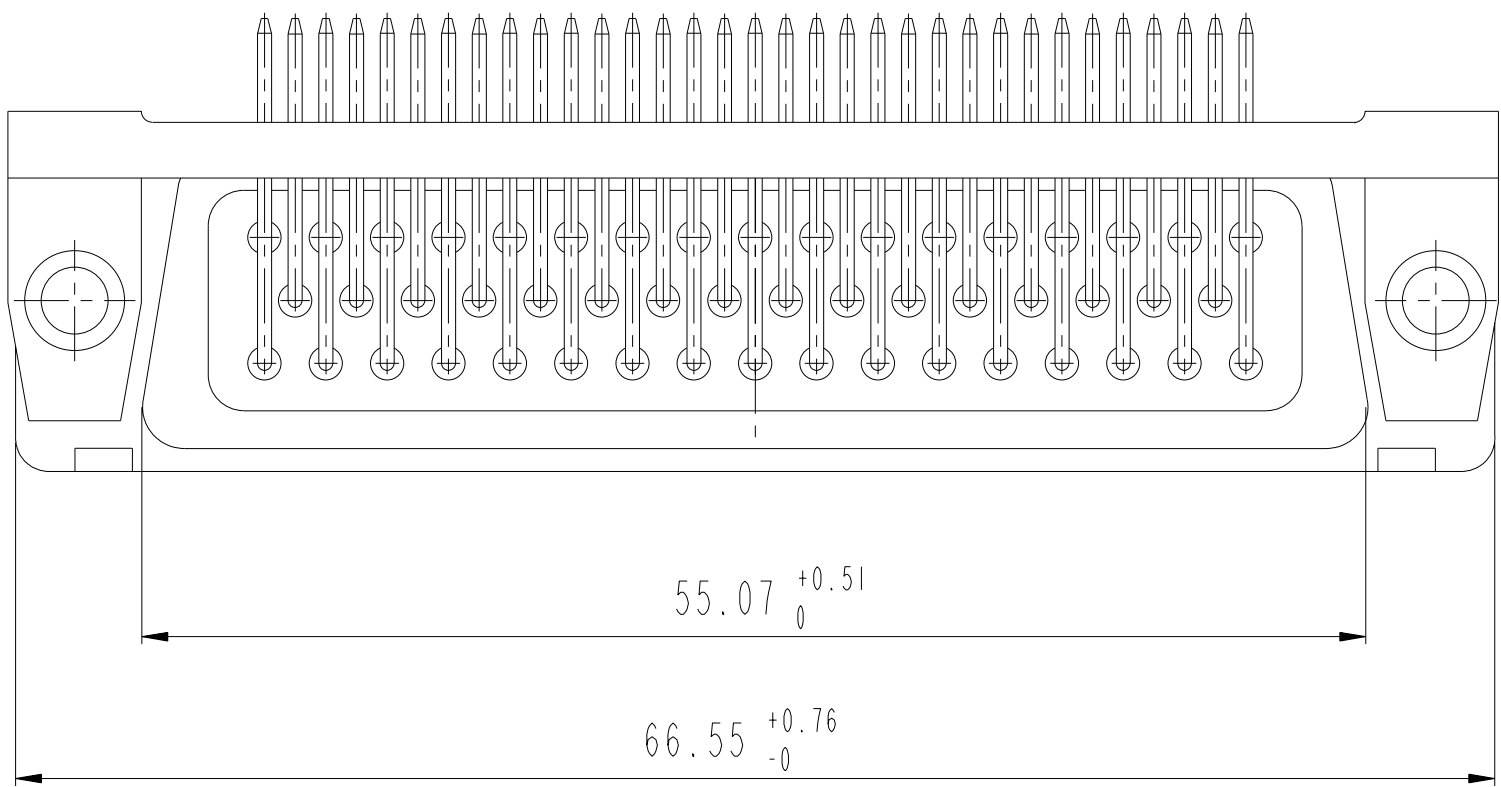


www.fciconnect.com			surface - 		tolerance std ISO 1302 ISO 406 ISO 1101		projection 		mm 			
			TOLERANCES UNLESS OTHERWISE SPECIFIED						size 		Scale 2:1	
Dr	M PESSON	2006/11/14	ANGULAR	LINEAR	0.X		±0.3					
Eng	P LEGARE	2006/11/14			0.XX		±0.1					
Chr	P LEGARE	2006/11/14	0° ±2°		0.XXX		±0.05		ECN		LS06-0174	
Appr	P LEGARE	2006/11/14	Product family					-	Spec ref			
			title SUB FEMALE DM HE508 series					dwg no C01-8637-1748		Rev. A		
			with right angle contact									
			catalog no -					CUSTOMER		sheet 8 of 9		

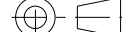


SCALE: 3



SHELL SIZE D WITH PLASTIC BRACKET (50 contacts)



SCALE: 3

www.fciconnect.com			surface - <input checked="" type="checkbox"/> ISO 1302		tolerance std - <input checked="" type="checkbox"/> ISO 406 ISO 1101		projection 		mm 		
			TOLERANCES UNLESS OTHERWISE SPECIFIED								
Dr	M PESSON	2006/11/14	ANGULAR	LINEAR	0.X		±0.3		size A2	Scale 2:1	
Eng	P LEGARE	2006/11/14			0.XX		±0.1				
Chr	P LEGARE	2006/11/14			0.XXX		±0.05				
Appr	P LEGARE	2006/11/14	0° ±2°				ECN		LS06-0174		
			Product family					-		Spec ref	
			SUB FEMALE DM HE508 series					C01-8637-1748			Rev. A
			with right angle contact								
catalog no			-					CUSTOMER		sheet 9 of 9	

# Mouser Electronics

Authorized Distributor

Click to View Pricing, Inventory, Delivery & Lifecycle Information:

[FCI / Amphenol:](#)

[DEM09S500CN](#) [DDM50S500N](#)