

VIEW OF MATING FACE

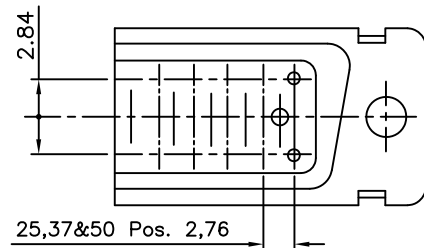
"This LF product meets European Union Directives and other country regulations as described in GS-22-008"

Packaging as per GS-14-920

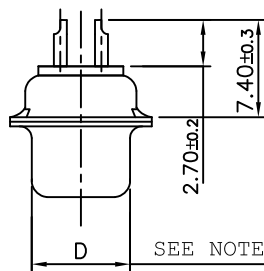
Housing will withstand exposure to 260°C peak temp for 3.5sec

ORDERING INFORMATION

SERIES	D B V 25 P 0 64 H T X B XXX LF	LEAD FREE
SHELL SIZE		SPECIAL CODES
E,A,B,C,D		
OPTIONS		INSULATOR COLOUR
BLANK-STANDARD		BLANK- NATURAL
F - FLOAT MOUNTING		B - BLACK
L - CLINCH NUT (M3)		DIMPLES
O - CLINCH NUT (UNC)		X-ON MALE CONNECTORS ONLY
V - FEM. SCREW LOCK HEX. (UNC)		
NO.OF CONTACTS		SHELL PLATING
09,15,25,37,50		BLANK-ZINC
		T-STD. TIN over Cu
CONTACTS		OPTIONS
P - PIN		BLANK - STD
S - SOCKET		H - WITH SHIELDING TERMINATION FINGERS
TERMINATION TYPE		CONTACT PLATING
0 - SOLDER BUCKET		64 - 200 Mating cycles
		65 - 500 Mating cycles



LAY OUT OF 50P CONNECTOR



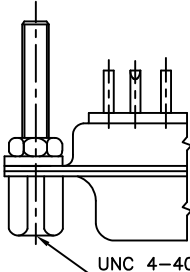
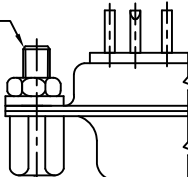
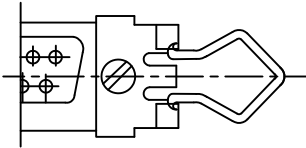
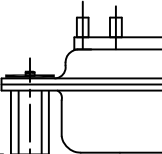
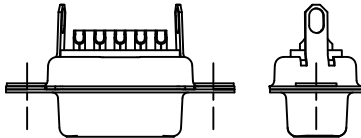
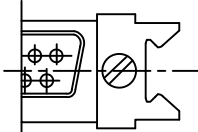
TECHNICAL SPECIFICATIONS

SHELLS	:	MATT TIN / ZINC PLATED STEEL
INSULATOR MATERIAL	:	SELF EXTINGUISHING THERMOPLASTIC - UL CLASS 94 V0 THE HOUSING WILL WITHSTAND EXPOSURE TO 260-265°C IF WE USE PROTECTIVE ADHESIVE (type Kapton or Teflon) OR PROTECTIVE METALLIC DEVICE
CONTACTS DIA ON ACTIVE AREA	:	Ø1 MM.
CONTACTS MATERIAL	:	COPPER ALLOY
CONTACT PLATING	:	GXT / GOLD OVER NICKEL (ACTIVE ZONE) TIN OVER NICKEL (TERMINATION ZONE)
FOR LEAD FREE PLATING	:	2 µMIN. TIN TOP OVER 1.27 µ MIN.NICKEL UNDER PLATE(ON TERMINATION ZONE)
OPERATING TEMPERATURE	:	-55°C +125°C
OPERATING CURRENT	:	5 A PER CONTACT
CONTACT RESISTANCE	:	≤10m Ω
INSULATION RESISTANCE	:	≥5000M Ω
MAXIMUM VOLTAGE	:	1000 V.r.m.s
MECHANICAL ENDURANCE	:	200 MATINGS (For 64 code) 500 MATINGS (For 65 code).
DAMP HEAT	:	21 DAYS.
WIRE SIZE	:	0.6 MM ² (AWG 20) MAX.

50	P	66.65	52.68	61.11	11.08	14.99	11.09	5.85	55.07	13.31	1.50	1.0
	S	66.65	52.30	61.11	10.62	14.99	11.21	6.05	55.07	13.31	1.10	0.8
37	P	68.94	55.30	63.50	8.23	12.17	11.09	5.85	57.45	10.46	1.50	1.0
	S	68.94	54.71	63.50	7.77	12.17	11.21	6.05	57.45	10.46	1.10	0.8
25	P	52.65	38.84	47.04	8.23	12.17	11.07	5.85	41.02	10.46	1.10	0.8
	S	52.65	38.25	47.04	7.77	12.17	11.21	6.05	41.02	10.46	1.10	0.8
15	P	38.76	25.12	33.32	8.23	12.17	10.99	5.85	27.25	10.46	1.10	0.8
	S	38.76	24.54	33.32	7.77	12.17	11.21	6.05	27.25	10.46	1.10	0.8
09	P	30.43	16.79	24.99	8.23	12.17	10.99	5.85	19.02	10.46	1.10	0.8
	S	30.43	16.21	24.99	7.77	12.17	11.21	6.05	19.02	10.46	1.10	0.8
SHELL SIZE	A	+0,76 0	+0,25 0	±0,12 C	+0,25 D 0	+0,76 E 0	F MAX	+0,15 G 0	+0,51 H 0	+0,51 J 0	±0,2 K	+0,22 L 0
	DIMENSIONS											

NOTE:- 1) INSIDE DIMENSIONS OF THE MALE AND OUTSIDE DIMENSIONS OF THE FEMALE CONNECTOR
2) ALL ACCESSORIES SHOWN IN ASSEMBLY OPTIONS SHOULD BE ORDERED SEPARATELY

ASSEMBLY OPTIONS

<div><div>FEMALE SCREW LOCK EXTENDED TYPE</div><div></div><div>ORD CODE 8630-01-061</div></div>	<div><div>FEMALE SCREW LOCK</div><div><div>EXTERNAL THREAD</div><div>INTERNAL THREAD</div></div><table><tr><td>8630-01LF</td><td>M3</td><td>M3</td></tr><tr><td>8630-01ALF</td><td>M3</td><td>4-40 UNC 2B</td></tr><tr><td>8630-01BLF</td><td>4-40 UNC 2A</td><td>4-40 UNC 2B</td></tr><tr><td>8630-01CLF</td><td>4-40 UNC 2A</td><td>M3</td></tr></table><div>ORD-CODE EXTERNAL THREAD INTERNAL THREAD</div></div>	8630-01LF	M3	M3	8630-01ALF	M3	4-40 UNC 2B	8630-01BLF	4-40 UNC 2A	4-40 UNC 2B	8630-01CLF	4-40 UNC 2A	M3
8630-01LF	M3	M3											
8630-01ALF	M3	4-40 UNC 2B											
8630-01BLF	4-40 UNC 2A	4-40 UNC 2B											
8630-01CLF	4-40 UNC 2A	M3											
<div><div>MALE LEVER LOCK</div><div></div><div>ORD CODE 8630-3427(EABC)</div><div>ORD CODE 8630-3428(D)</div></div>	<div><div>CONNECTOR WITH SPECIAL RIVETTED FEMALE SCREW LOCK</div><div><div>6.4 MAX</div><div>FEMALE SCREW LOCK</div><div></div><div>UNC 4-40,2B THREAD</div><div>PREFIX: V</div></div></div>												
<div><div>WITH SHIELDING TERMINATION FINGERS</div><div></div><div>OPTION: H</div></div>	<div><div>FEMALE LEVER LOCK</div><div></div><div>ORD CODE 8630-3425(EABC)</div><div>ORD CODE 8630-3426(D)</div></div>												

mat'l. code SEE NOTE 4				surface ISO 1302 ✓	tolerance ISO 406 ISO 1101	projection 	product family D-SUB			
ltr	ecn no	dr	date	tolerances unless	otherwise specified	MM 	title D- SUB SOLDER BUCKET CONNECTOR (WITH ASSEMBLY OPTIONS)			
N	I11-0003	AMR	2011-01-06	angles	linear					
-	-	-	-				dwg no C-DSUB-0064			
H	I07-0175	MRA	2007-12-17	0°±1°						
J	I08-0131	MRA	2008-10-06	dr	GEORGE.V.JOSEPH	1999-03-20	sheet 1 of 1			
K	I09-0121	MRA	2009-07-01	enr	GEORGE.V.JOSEPH	1999-03-20				
L	I09-0140	MRA	2009-07-14	chr	ABHILASH.M.R	2009-07-01	size A3			
M	I09-0195	MRA	2009-09-18	appd	SUDHIR.VARMA	2009-07-01				
sheet index		revision	N				type Product Customer Drawing			
		sheet	1							

Mouser Electronics

Authorized Distributor

Click to View Pricing, Inventory, Delivery & Lifecycle Information:

[FCI / Amphenol:](#)

[DD50S065TLF](#) [DE09P064TXLF](#) [DB25S064TLF](#) [DC37P065TXLF](#) [DC37S064TLF](#) [DEO09S064TLF](#) [DE09S064TLF](#)
[DB25P064TXLF](#) [DC37P064TXLF](#) [DEO09S065TLF](#) [DEO09P065TXLF](#) [DAO15S065TLF](#) [DAO15S064TLF](#)
[DEO09P064TXLF](#)