

FOR REFERENCE ONLY

SPECIFICATIONS:

AC RATING: 10 AMPS @115VAC (RESISTIVE LOAD)
5 AMPS @115VAC (INDUCTIVE LOAD)
3 AMPS @115VAC (LAMP LOAD)

DC RATING: 10 AMPS @28VDC (RESISTIVE LOAD)
5 AMPS @28VDC (INDUCTIVE LOAD)
3 AMPS @28VDC (LAMP LOAD)

MECHANICAL LIFE: 500,000 CYCLES
ACTION: MOMENTARY SNAP

OPERATING FORCE:
SERIES 20 & 30: 3 TO 5 POUNDS MOMENTARY
1/2 TO 2 POUNDS PUSH-PULL
SERIES 22 & 32: 2 TO 3 POUNDS MOMENTARY

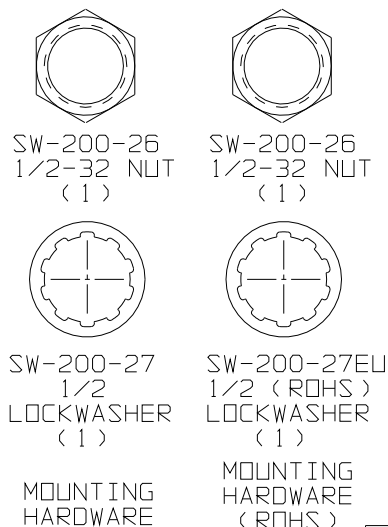
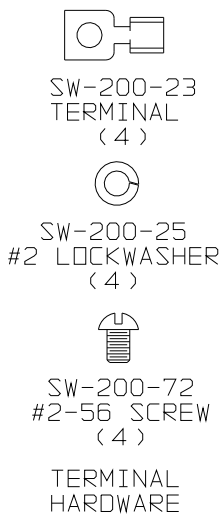
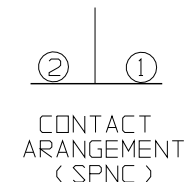
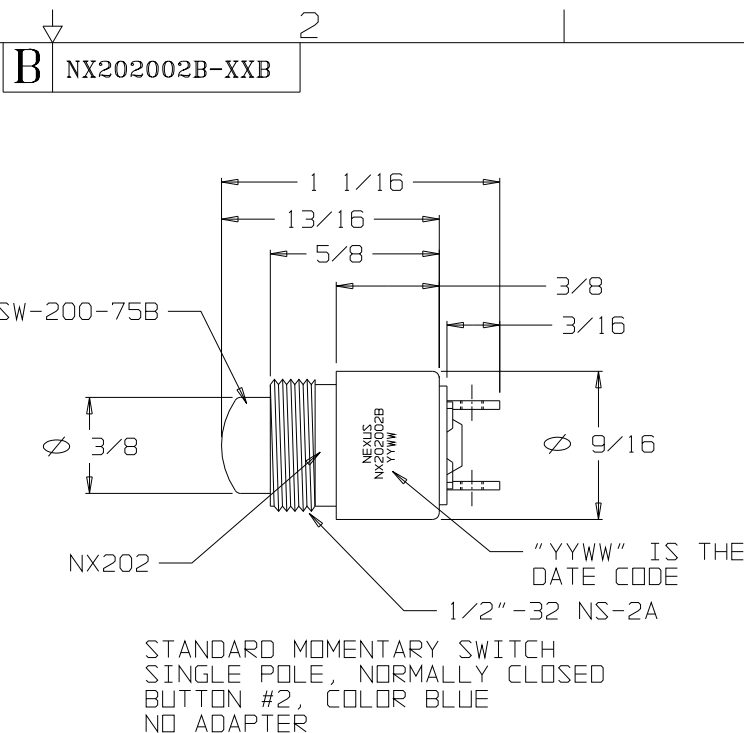
WEIGHT: .050 POUNDS MAXIMUM

CASE: ALUMINUM ALLOY 2011-T3,
"EU" (ROHS COMPLIANT)
CLEAR ANODIZED IAW MIL-A-8625

PLUNGER: GLASS FILLED NYLON

BODY: DIALLYL PHTHALATE IAW MIL-M-14

TERMINALS: THREADED #2-56 NC-2B



ORDERING INFORMATION:

NX202002B-00B SWITCH ONLY
NX202002B-30B SWITCH, MOUNTING HARDWARE
NX202002B-31B SWITCH, MOUNTING HARDWARE, TERNIMAL HARDWARE
NX202002B-00BEU SWITCH (ROHS) ONLY
NX202002B-30BEU SWITCH (ROHS), MOUNTING HARDWARE (ROHS)
NX202002B-31BEU SWITCH (ROHS), MOUNTING HARDWARE (ROHS), TERNIMAL HARDWARE

THIS DOCUMENT CONTAINS PROPRIETARY INFORMATION OF NEXUS, INCORPORATED AND SUCH INFORMATION MAY NOT BE DISCLOSED TO OTHERS FOR ANY PURPOSE OR USED FOR ANY PURPOSE WITHOUT THE WRITTEN CONSENT OF NEXUS.

DWN. BY	HR	DATE	4/6/11	MATERIAL	N/A
CHECKED BY		DATE		FINISH	N/A
APPR. BY		DATE		WEIGHT	—
UNLESS OTHERWISE SPECIFIED DIMENSIONS ARE IN INCHES TOLERANCES ON				SCALE	N/A
.XX .XXX ANGLES				TITLE	
— ±.003 ±.5°				SWITCH SPNC MOMENTARY	
DO NOT SCALE DWG.				SHEET 1 OF 1	
NEXUS STAMFORD, CONN				SIZE	DWG. NO.
B				NX202002B-XXB	

A	INITIAL RELEASE	103	4/6/11	HR
LET.	REVISION	CN #	DATE	CHK.

Mouser Electronics

Authorized Distributor

Click to View Pricing, Inventory, Delivery & Lifecycle Information:

[Amphenol:](#)

[NX202002B-00B](#)