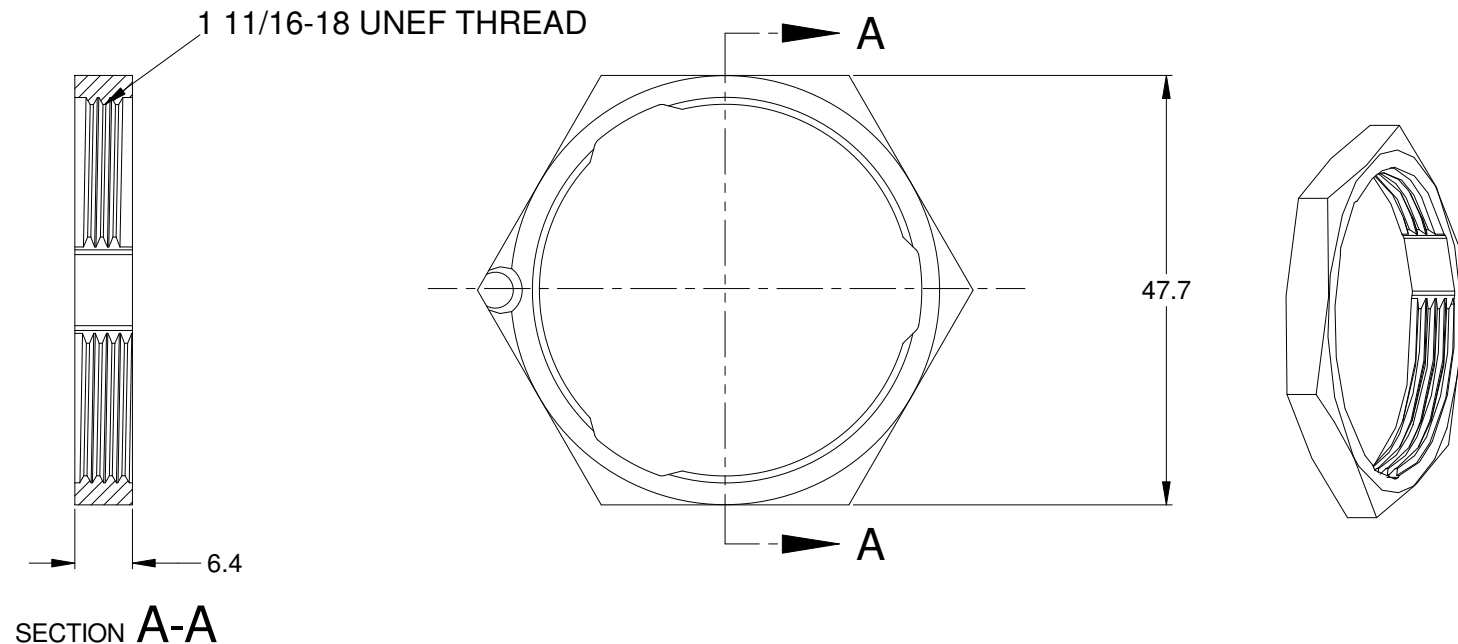


| REVISIONS | | | | | |
|-----------|-----|---------------------|---------|-------|-------|
| REV | ECO | DESCRIPTION | DATE | BY | APPR |
| A1 | | RELEASE NEW PRODUCT | 16JUN15 | ORION | TOMMY |



NOTES: UNLESS OTHERWISE SPECIFIED


1. MATERIAL: THERMOPLASTIC

2. COLORS: BLACK

3. RoHS COMPLIANT

4. USE WITH AHDP SERIES SIZE 24 RECEPTACLE,
MOUNTING TORQUE IS 7.4~8.4 N.M

5. ALL DIMENSIONS ARE FOR REFERENCE USE ONLY.

| | | | | |
|---|----------------|--|--|---|
| AHDP24-PN01 | | DESCRIPTION | | ITEM |
| PART NUMBER | | | | |
| QUANTITY | MATERIALS LIST | | | |
| UNLESS OTHERWISE SPECIFIED: 1) All dimensions are in metric(mm). 2) Tolerances are as follows: 1 PL DEC ±0.30 2 PL DEC ±0.15 3 PL DEC ±0.08 3) Note reference =  | | SIGNATURES DRAWN: ORION.LI CHECKED: ENGINEER: APPROVAL: TOMMY.XIE CUSTOMER: THIS DRAWING IS SUPPLIED FOR INFORMATION ONLY. DESIGN FEATURES, SPECIFICATIONS AND PERFORMANCE DATA SHOWN HEREON ARE THE PROPERTY OF THE AMPHENOL CORPORATION. NO RIGHTS OF REPRODUCTION ARE IMPLIED. ALL DIMENSIONS ARE SUBJECT TO NORMAL MANUFACTURING VARIATIONS. | DATE 16JUN15 16JUN15 | <div>Amphenol</div> <div>Sine Systems - www.amphenol-sine.com 44724 Morley Drive Clinton Township, MI 48036</div> <div>NUT, AHDP SERIES, SIZE 24</div> <div><div>SIZE A</div><div>TYPE C-</div><div>DWG NO: AHDP24-PN01</div><div>REVISION A1</div></div> <div>SCALE: NONE</div> |
| MATERIAL SPECIFICATIONS: | | FRACTIONS ±1/64 ANGLES ±1° | | |
| PROCESS SPECIFICATIONS: | | | | |
| NEXT ASSY: | | | | |
| | | SHEET 1 OF 1 | | |

Mouser Electronics

Authorized Distributor

Click to View Pricing, Inventory, Delivery & Lifecycle Information:

[Amphenol:](#)

[AHDP24-PN01](#)