




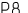












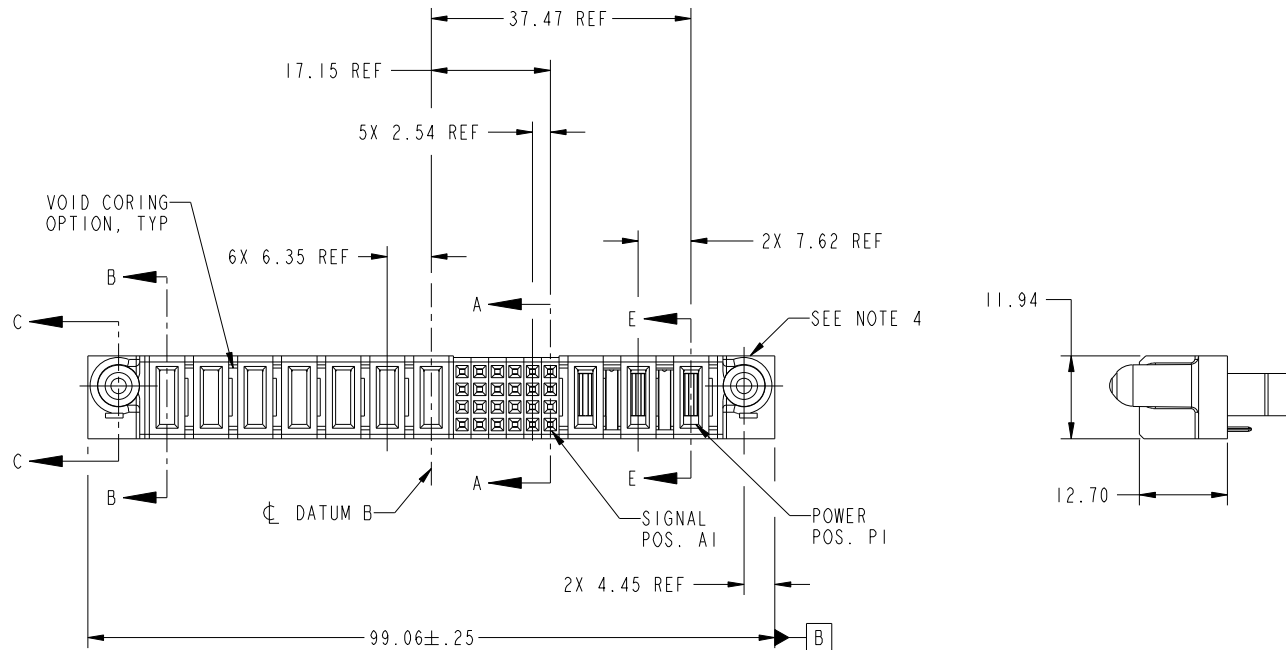


Tous droits strictement reserves. Reproduction ou communication a des tiers interdite sous quelque forme que ce soit sans autorisation écrite du propriétaire. Propriete de c FCI. Droits de reproduction FCI.



All rights strictly reserved. Reproduction or issue to third parties in any form whatever is not permitted without written authority from the proprietor. Property of FCI. Copyright FCI.

PRODUCT NO.	ROW S	POWER								SIGNAL					POWER				
		E2	P10	P9	P8	P7	P6	P5	P4	6	5	4	3	2	1	P3	P2	P1	E1
51940-233-- NOTE: 3	D C B A																		



CODE	DIM "M" MATING LENGTH	CONTACT TYPE
E	[N/A]	SIGNAL
PD	[2.34]	POWER
PH	[2.34]	POWER
PG	[1.07]	POWER
PA	[1.07]	POWER

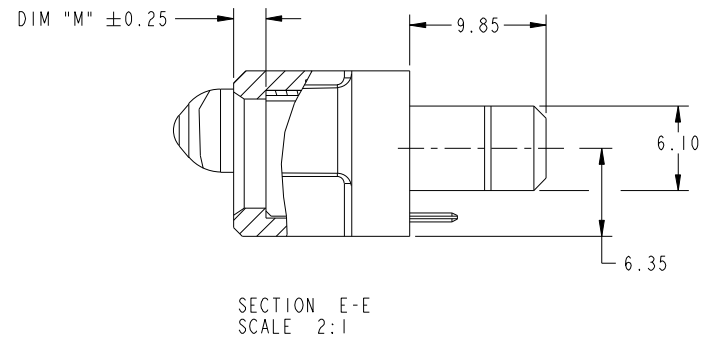
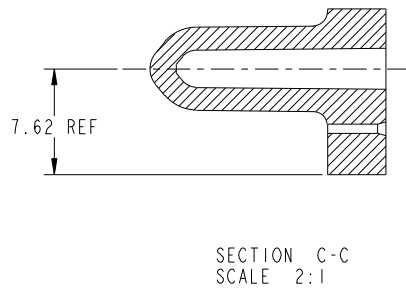
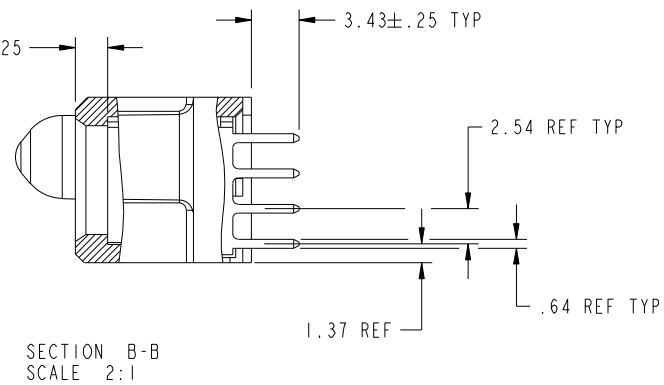
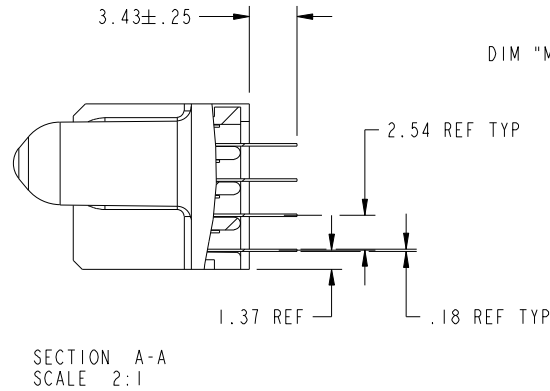
mat'l code				SEE NOTES		tolerances unless otherwise specified		CUSTOMER		FCI	
ltr	ecn no.	dr	date			linear	0.X ± 0.3	COPY		www.fciconnect.com	
A	DG07-0347	JC	08/27/07				0.XX ± 0.13	projection		title	
						angles	0.XXX ± 0.051			3ACP + 24S + 7P VERTICAL STB RECEPT	
							0° ± 2°	scale	1:1	product family	
						dr	Jerome Chen	08/22/07		PwrBlade	
						enr	Jerome Chen	08/22/07		code	
						chr	Gary Hsieh	08/22/07		213	
						appd	Joseph Hsia	08/22/07		sheet	
sheet index		revision sheet		A	A	A	A			1 of 4	
1		2		3	4					cage code	
										22526	

Tous droits strictement reserves. Reproduction ou communication a des tiers interdite sous quelque forme que ce soit sans autorisation écrite du propriétaire. Propriete de c FCI. Droits de reproduction FCI.



All rights strictly reserved. Reproduction or issue to third parties in any form whatever is not permitted without written authority from the proprietor. Property of FCI. Copyright FCI.

PRODUCT NUMBER
51940-233--
NOTE: 3



mat'l code				tolerances unless otherwise specified		CUSTOMER		FCI	
litr	ecn no.	dr	date	linear	0.X ± 0.3	COPY		www.fciconnect.com	
A				linear	0.XX ± 0.13	projection		title	
				angles	0.XXX ± 0.051			3ACP + 24S + 7P VERTICAL STB RECEPT	
				dr	Jerome Chen 08/22/07			product family	
				enrg	Jerome Chen 08/22/07			PwrBlade	
				chr	Gary Hsieh 08/22/07			code	
				appd	Joseph Hsia 08/22/07			213	
sheet index		revision sheet				scale		sheet	
						1:1		2 of 4	
								cage code	
								22526	

Pro/E

PDM: Rev:A

STATUS: Released

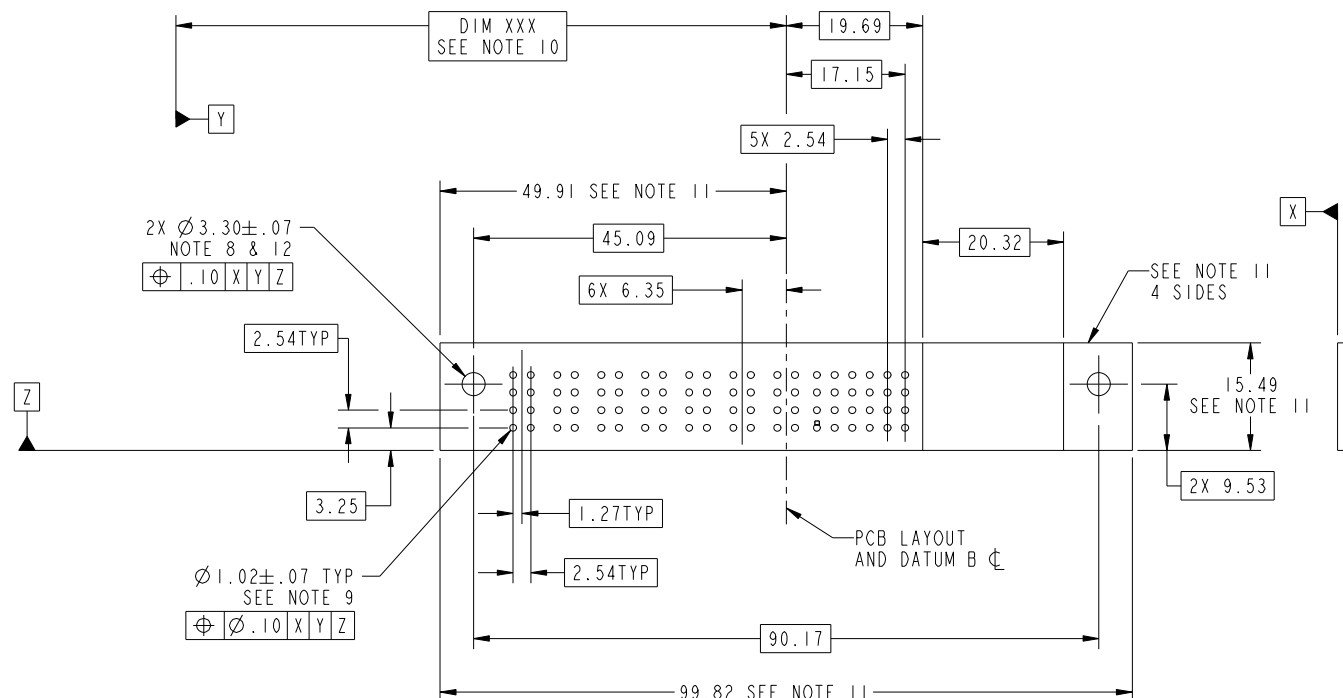
Printed: Dec 20, 2010

Tous droits strictement reserves. Reproduction ou communication a des tiers interdite sous quelque forme que ce soit sans autorisation écrite du propriétaire. Propriete de c FCI. Droits de reproduction FCI.



All rights strictly reserved. Reproduction or issue to third parties in any form whatever is not permitted without written authority from the proprietor. Property of FCI. Copyright FCI.

PRODUCT NUMBER
51940-233--
NOTE: 3



RECOMMENDED PCB LAYOUT

mat'l code				tolerances unless otherwise specified		CUSTOMER		FCI	
litr	ecn no.	dr	date	linear	0.X ± 0.3	COPY		www.fciconnect.com	
A				linear	0.XX ± 0.13	projection		title	
				angles	0.XXX ± 0.051			3ACP + 24S + 7P	
				dr	0° ± 2°			VERTICAL STB RECEPT	
				enr	Jerome Chen 08/22/07	MIM		product family	PwrBlade
				enr	Jerome Chen 08/22/07			size	213
				chr	Gary Hsieh 08/22/07	scale		dwg no	51940-233
				appd	Joseph Hsia 08/22/07	1:1		sheet	3 of 4
sheet index	revision sheet								

Pro/E

cage code 22526

Tous droits strictement reserves. Reproduction ou communication a des tiers interdite sous quelque forme que ce soit sans autorisation écrite du propriétaire. Propriete de c FCI. Droits de reproduction FCI.



All rights strictly reserved. Reproduction or issue to third parties in any form whatever is not permitted without written authority from the proprietor. Property of FCI. Copyright FCI.

PRODUCT NUMBER
51940-233-- NOTE: 3

NOTES:

1. DIMENSIONS AND TOLERANCES ARE IN ACCORDANCE WITH
ASME Y14.5M, 1994 UNLESS OTHERWISE SPECIFIED.

CONNECTOR NOTES:

- ② HOUSING MATERIAL: UL 94 V-0 GLASS FILLED
HIGH-TEMP THERMOPLASTIC
POWER CONTACT MATERIAL: COPPER ALLOY
SIGNAL PIN MATERIAL: COPPER ALLOY
3. PLATING SPEC.
51940-233, 51940-233LF PLATING SPEC. WAS SHOWN IN THE PRINT OF 10064183.
- ④ MANUFACTURER'S NAME, P/N, AND DATE CODE TO APPEAR ON
THIS SURFACE.
5. PRODUCT SPECIFICATION GS-12-149.
APPLICATION SPECIFICATION BUS-20-067.
6. PACKAGED IN TRAYS.

PCB NOTES:

7. ALL HOLE DIAMETERS ARE FINISHED HOLE SIZE.
- ⑧ MOUNTING HOLES, WHERE APPLICABLE, ARE UNPLATED.
- ⑨ $\varnothing 1.151 \pm 0.025$ DRILLED HOLES PLATED WITH
0.008 MIN SnPb OR Sn OVER 0.03
TO 0.08 Cu PLATING TO ACHIEVE
 $\varnothing 1.02 \pm .07$ HOLE.
- ⑩ "DIM XXX" TO BE DETERMINED BY THE CUSTOMER.
- ⑪ CONNECTOR KEEP-OUT ZONE.
- ⑫ RECOMMENDED RETENTION TO PCB
 $\varnothing 3.30$ THRU HOLE FOR #5 SOCKET HEAD CAP SCREW MAX. HEAD 5.21
RECOMMENDED SCREW LENGTH 11.99 + PCB THICKNESS.
RECOMMENDED SCREW SEATING TO PCB TORQUE: 2-5 lbf-in (2300-5760 gf-cm).

mat'l code				tolerances unless otherwise specified		CUSTOMER		FCI			
ltr	ecn no.	dr	date			COPY		www.fciconnect.com			
A				linear	$0.X \pm 0.3$	projection		title			
					$0.XX \pm 0.13$			3ACP + 24S + 7P			
				angles	$0.XXX \pm 0.051$			VERTICAL STB RECEPT			
					$0^\circ \pm 2^\circ$						
				dr	Jerome Chen 08/22/07	MIM		product family		PwrBlade	code
				engr	Jerome Chen 08/22/07			size	dwg no		213
				chr	Gary Hsieh 08/22/07	scale		A		51940-233	sheet
				appd	Joseph Hsia 08/22/07	1:1					4 of 4
sheet index	revision sheet										

cage code 22526

Mouser Electronics

Authorized Distributor

Click to View Pricing, Inventory, Delivery & Lifecycle Information:

[FCI / Amphenol:](#)

[51940-233LF](#)