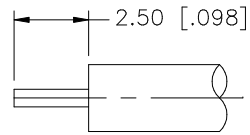
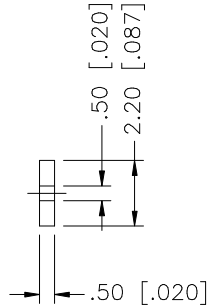
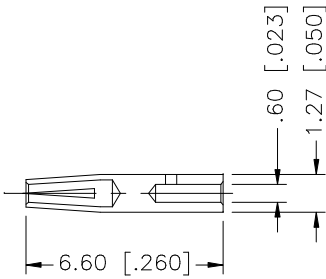
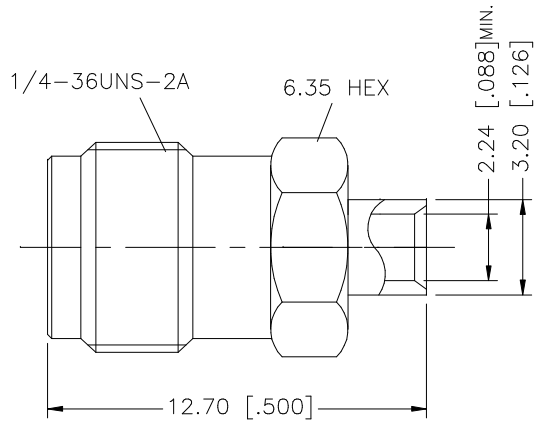


REV.	DATE	DESCRIPTION
NC	04/31/03	INITIAL RELEASE
A	10/27/05	MODIFY - INSULATOR NOW INTERNAL



RECOMMENDED CABLE
STRIPPING DIMS.



NOTE:
1. CONTACT PIN TO SOLDER

8					<div>UNLESS OTHERWISE SPECIFIED DIMENSIONS ARE IN MILLIMETERS. DIMENSIONS IN [] ARE IN INCHES AND FOR CUSTOMER REFERENCE ONLY.</div> <div>UNLESS OTHERWISE SPECIFIED TOLERANCES FOR MILLIMETERS ARE: 0.5 – 8mm ± 0.20mm 8 – 30mm ± 0.40mm 30 – 120mm ± 0.50mm</div> <div>UNLESS OTHERWISE SPECIFIED TOLERANCES FOR INCHES ARE: .020 – .315 = ± 0.007” .315 – 1.180 = ± 0.015” 1.180 – 4.724 = ± 0.020”</div>	APPROVALS	DATE	<div>Amphenol Connex</div>					
7						DRAWN	G.R.S.						10/27/05
6						CHECKED			<div>PART DESCRIPTION</div> <div>SMA DIRECT SOLDER JACK (FOR .085”, .086” CABLE)</div>				
5						ISSUED							
4	INSULATOR	TEFLON	NATURAL	1		SHEET	1 OF 1		<div>PART NO.</div> <div>132103</div>				
3	CONTACT PIN	BER. COPPER	GOLD	1									
2	INSULATOR	TEFLON	NATURAL	1				<div>DWG. NO.</div> <div>132103.DWG</div> <div>REV.</div> <div>A</div> <div>SIZE</div> <div>A</div> <div>SCALE</div> <div>NA</div>					
1	BODY	BRASS	GOLD	1									
	DESCRIPTION	MATERIAL	FINISH	QTY	DO NOT SCALE DRAWING	CAD FILE C:/132/132103.DWG							

Mouser Electronics

Authorized Distributor

Click to View Pricing, Inventory, Delivery & Lifecycle Information:

[Amphenol:](#)

[132103](#)