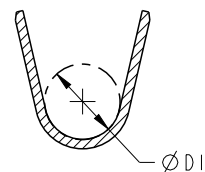
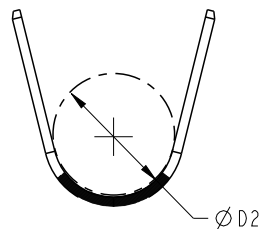


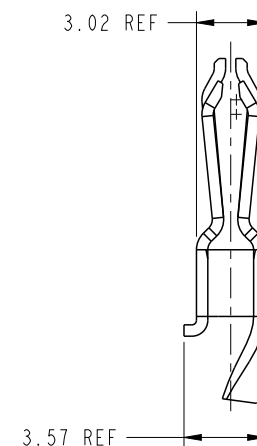
PRODUCT NUMBER  
10134849-91XLF



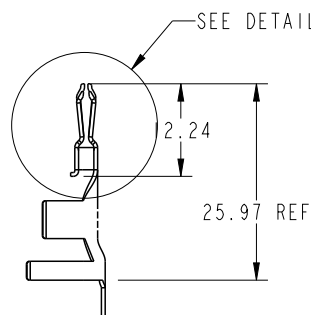
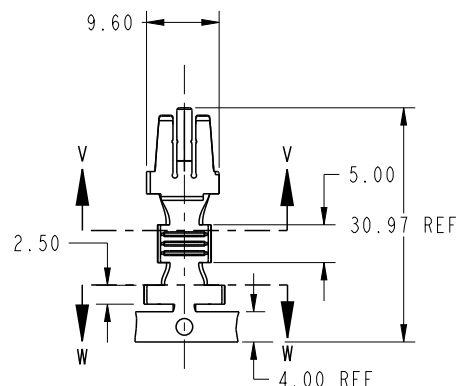
SECTION V-V  
SCALE 5:2



SECTION W-W  
SCALE 5:2



DETAIL D  
SCALE 3:1



PART NUMBER	CONDUCT BARREL	INSULATOR BARREL	CRIMP SIZE	SIUTABLE
	DIM "D1"	DIM "D2"	SQUARE mm	CABLE
10134849-911LF	4.0	6.4	6~10	AWG8~AWG9
10134849-912LF	2.8	4.2	4~6	AWG10~AWG11
10134849-913LF	2.3	3.8	2~4	AWG12~AWG14

spec ref *				dr		Ruan MT	2015/04/21	<div>projection</div> <div></div>	<div>MM</div> <div></div>	size	A4	scale	1:1
tolerance std	TOLERANCES UNLESS OTHERWISE SPECIFIED			eng		Ruan MT	2015/07/15			ecn no -			
				chr		Fancy Zhang	2015/07/15						
				appr		Pei-Ming Zheng	2015/07/15			product family			
surface	linear	0.X	±0.5		title	POWER CONTACT				dwg no	10134849		rev
		0.XX	±0.25										
		0.XXX	±0.10										
	angular	0°	±2°	www.fci.com	cat. no.	Product - Customer Drw				sheet 1 of 2		A	

PrintE File - REV C - 2009-06-09

PRODUCT NUMBER

10134849-91XLF

## NOTES:

1. PRODUCT NUMBERING CODE:

10134849-91XLF

DIM 'X' (SHOWN IN TABLE 1)

2. PLATING SPECIFICATION:

30u" GXT OVER 50u" Ni ON CONTACT AREA,  
AND 80u" Sn OVER 50u" Ni ON TERMINATION AREA.3. PART NUMBER 10134849-91XLF MEET EUROPEAN DIRECTIVE  
AND OTHER COUNTRY REGULATIONS AS DESCRIBED IN GS-22-008.

4. 10134849-\*\*\*LF APPLICABLE HOUSING:

PM TYPE: 10097404-DGC\*\*\*

STR TYPE: 10097405-DGC\*\*\*

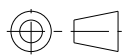
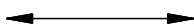

LATCH EAR TYPE: 10097407-DGC\*\*\*

STL TYPE: 10129246-DGC\*\*\*

5. PRODUCT SPEC: GS-12-474.

6. APPLICATION SPEC: GS-20-0445.

7. THE PART IS BEEN SOLD AS LOOSE PIECE AND FCI GUARANTEES IS  
THE PART IN COMPLIANCE WITH THIS CUSTOMER DRAWING STATEMENT.  
THE PRODUCT SPEC FOR CABLE ASSEMBLY CAN BE ONLY AS THE REFERENCE  
DOCUMENT BECAUSE THE TESTING AND SPEC IS BASED ON USING FCI RAW  
CABLE AND CABLE ASSEMBLY. IF THE RAW CABLE AND CABLE ASSEMBLY IS  
OUTSIDE SUPPLIERS SOURCED BY CUSTOMERS, CUSTOMER OR CABLE  
ASSEMBLY SUPPLIERS SHOULD BE FULLY RESPONSIBLE FOR THE CABLE ASSY QUALITY.

dr	Ruan MT	2015/04/21	<div>projection</div> 	<div>MM</div> 	size	A4	scale	1:1		
eng	Ruan MT	2015/07/15			ecn no	-				
chr	Fancy Zhang	2015/07/15			rel level	Released				
appr	Pei-Ming Zheng	2015/07/15	product family							
		title			POWER CONTACT			dwg no		
					TERMINAL			10134849		
								rev		
								A		
www.fci.com		cat. no.			Product - Customer Drw			sheet 2 of 2		

# Mouser Electronics

Authorized Distributor

Click to View Pricing, Inventory, Delivery & Lifecycle Information:

[FCI / Amphenol:](#)

[10134849-912LF](#) [10134849-911LF](#)