



*Quality Products. Service Excellence.*

## Type 1 Mild Steel Junction Box *CSKO Series*

Screw Cover and w/ Knockouts



### Application

- Designed for general purpose indoor commercial use as a junction, pull or switch box.

### Standards

- UL-50 Type 1
- CSA Type 1
- Complies with:
  - NEMA Type 1
  - IEC 60529, IP20

### Construction

- Formed and spot welded from 16 or 14 gauge steel depending on size.
- Flat steel covers fastened with plated steel screws.
- Keyhole slots permit cover to be lifted off without removing screws entirely.
- Easily removed knockouts on all 4 sides (see drawings for sizes and locations).
- Through holes in back for wall mounting.
- Grounding location embossed in body.

### Finish

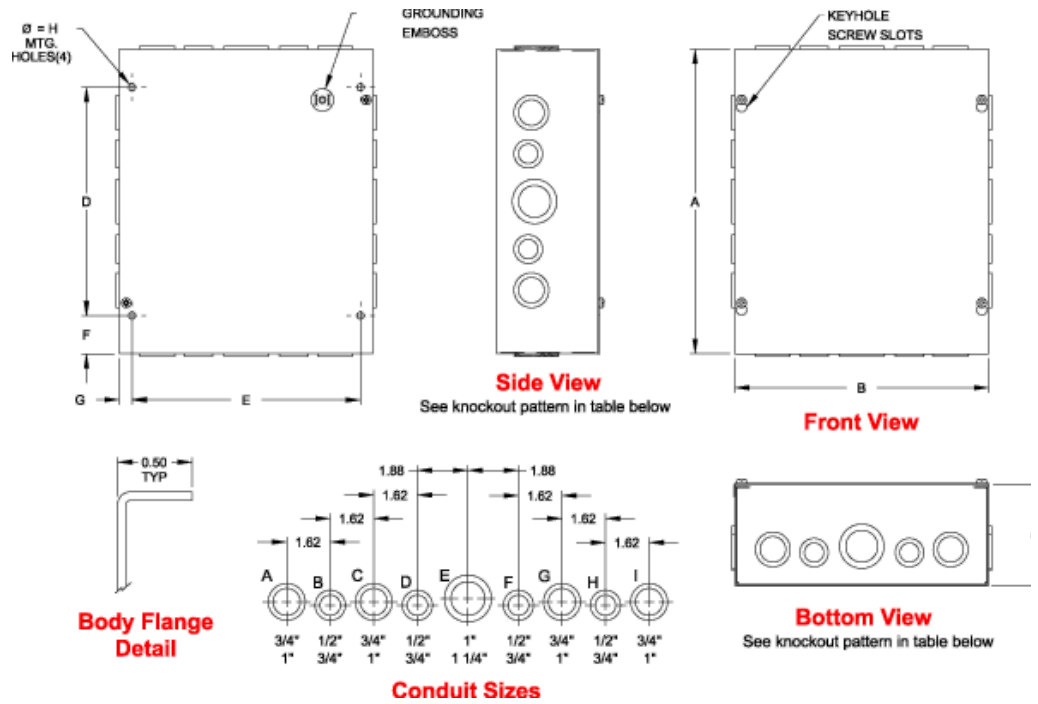
- Enclosure and cover are finished in ANSI 61 gray powder coating.

### Accessories

- Flush Covers



Type 1 Mild Steel Junction Box (CSKO Series) - Hammond Mfg.



Part No.	Overall Dimensions			Mtg. Centers				Knockout Pattern		Knockout Pattern
	A	B	C	D	E	F	G	Sides	H	Top & Bottom
CSKO443	4.00	4.00	3.00	2.00	3.00	0.88	0.50	B-C	0.28	A-B
CSKO663	6.00	6.00	3.00	3.00	5.00	1.50	0.50	B-C-D	0.28	B-C-D
CSKO863	8.00	6.00	3.00	5.00	5.00	1.50	0.50	F-G-H-I	0.28	B-C-D
CSKO16143	16.00	14.00	3.00	13.00	13.00	1.50	0.50	B-C-D-E-F-G-H	0.28	B-C-D-E-F-G-H
CSKO18143	18.00	14.00	3.00	15.00	13.00	1.50	0.50	A-B-C-D-E-F-G-H-I	0.28	B-C-D-E-F-G-H
CSKO20143	20.00	14.00	3.00	17.00	13.00	1.50	0.50	A-B-C-D-E-F-G-H-I	0.28	B-C-D-E-F-G-H
CSKO444	4.00	4.00	4.00	2.00	3.00	0.88	0.50	B-C	0.28	A-B
CSKO644	6.00	4.00	4.00	3.00	3.00	1.50	0.50	B-C-D	0.28	A-B
CSKO664	6.00	6.00	4.00	3.00	5.00	1.50	0.50	B-C-D	0.28	B-C-D
CSKO864	8.00	6.00	4.00	5.00	5.00	1.50	0.50	F-G-H-I	0.28	B-C-D
CSKO884	8.00	8.00	4.00	5.00	7.00	1.50	0.50	F-G-H-I	0.28	F-G-H-I
CSKO1084	10.00	8.00	4.00	7.00	7.00	1.50	0.50	F-G-H-I	0.28	F-G-H-I
CSKO10104	10.00	10.00	4.00	7.00	9.00	1.50	0.50	F-G-H-I	0.28	C-D-E-F-G
CSKO1284	12.00	8.00	4.00	9.00	7.00	1.50	0.50	C-D-E-F-G	0.28	F-G-H-I
CSKO12104	12.00	10.00	4.00	9.00	9.00	1.50	0.50	C-D-E-F-G	0.28	C-D-E-F-G
CSKO12124	12.00	12.00	4.00	9.00	11.00	1.50	0.50	C-D-E-F-G	0.28	C-D-E-F-G
CSKO16124	16.00	12.00	4.00	13.00	11.00	1.50	0.50	B-C-D-E-F-G-H	0.28	C-D-E-F-G
CSKO18124	18.00	12.00	4.00	15.00	11.00	1.50	0.50	A-B-C-D-E-F-G-H-I	0.28	C-D-E-F-G
CSKO18184	18.00	18.00	4.00	15.00	17.00	1.50	0.50	A-B-C-D-E-F-G-H-I	0.28	A-B-C-D-E-F-G-H-I
CSKO24244	24.00	24.00	4.00	21.00	23.00	1.50	0.50	C-D-E-F-G	0.28	C-D-E-F-G
CSKO666	6.00	6.00	6.00	3.00	5.00	1.50	0.50	B-C-D	0.28	B-C-D
CSKO886	8.00	8.00	6.00	5.00	7.00	1.50	0.50	F-G-H-I	0.28	F-G-H-I
CSKO1086	10.00	8.00	6.00	7.00	7.00	1.50	0.50	F-G-H-I	0.28	F-G-H-I
CSKO10106	10.00	10.00	6.00	7.00	9.00	1.50	0.50	F-G-H-I	0.28	C-D-E-F-G
CSKO12106	12.00	10.00	6.00	9.00	9.00	1.50	0.50	C-D-E-F-G	0.28	C-D-E-F-G
CSKO12126	12.00	12.00	6.00	9.00	11.00	1.50	0.50	C-D-E-F-G	0.28	C-D-E-F-G
CSKO16126	16.00	12.00	6.00	13.00	11.00	1.50	0.50	B-C-D-E-F-G-H	0.28	C-D-E-F-G
CSKO16166	16.00	16.00	6.00	13.00	15.00	1.50	0.50	B-C-D-E-F-G-H	0.28	B-C-D-E-F-G-H
CSKO18126	18.00	12.00	6.00	15.00	11.00	1.50	0.50	A-B-C-D-E-F-G-H-I	0.28	C-D-E-F-G
CSKO18186	18.00	18.00	6.00	15.00	17.00	1.50	0.50	A-B-C-D-E-F-G-H-I	0.28	A-B-C-D-E-F-G-H-I
CSKO24186	24.00	18.00	6.00	21.00	17.00	1.50	0.50	A-B-C-D-E-F-G-H-I	0.28	A-B-C-D-E-F-G-H-I
CSKO24246	24.00	24.00	6.00	21.00	22.50	1.50	0.75	A-B-C-D-E-F-G-H-I	0.44	A-B-C-D-E-F-G-H-I
CSKO30246	30.00	24.00	6.00	27.00	22.50	1.50	0.75	A-B-C-D-E-F-G-H-I	0.44	A-B-C-D-E-F-G-H-I
CSKO36246	36.00	24.00	6.00	33.00	22.50	1.50	0.75	A-B-C-D-E-F-G-H-I	0.44	A-B-C-D-E-F-G-H-I

## Type 1 Mild Steel Junction Box (CSKO Series) - Hammond Mfg.

Part No.	Overall Dimensions			Mtg. Centers				Knockout Pattern		Knockout Pattern
	A	B	C	D	E	F	G	Sides	H	Top & Bottom
<b>CSKO12128</b>	12.00	12.00	8.00	9.00	11.00	1.50	0.50	C-D-E-F-G	0.28	C-D-E-F-G
<b>CSKO16168</b>	16.00	16.00	8.00	13.00	15.00	1.50	0.50	B-C-D-E-F-G-H	0.28	B-C-D-E-F-G-H
<b>CSKO24248</b>	24.00	24.00	8.00	21.00	22.50	1.50	0.75	A-B-C-D-E-F-G-H-I	0.44	A-B-C-D-E-F-G-H-I
<b>CSKO202010</b>	20.00	20.00	10.00	17.00	19.00	1.50	0.75	A-B-C-D-E-F-G-H-I	0.28	A-B-C-D-E-F-G-H-I
<b>CSKO242410</b>	24.00	24.00	10.00	21.00	22.50	1.50	0.50	A-B-C-D-E-F-G-H-I	0.44	A-B-C-D-E-F-G-H-I
<b>CSKO302010</b>	30.00	20.00	10.00	27.00	18.50	1.50	0.75	A-B-C-D-E-F-G-H-I	0.44	A-B-C-D-E-F-G-H-I
<b>CSKO362410</b>	36.00	24.00	10.00	33.00	22.50	1.50	0.75	A-B-C-D-E-F-G-H-I	0.44	A-B-C-D-E-F-G-H-I

*Data subject to change without notice*

© 2018. Hammond Manufacturing Ltd. All rights reserved.

# Mouser Electronics

Authorized Distributor

Click to View Pricing, Inventory, Delivery & Lifecycle Information:

## Hammond:

[CSKO18186](#) [CSKO10104](#) [CSKO10106](#) [CSKO1084](#) [CSKO1086](#) [CSKO12104](#) [CSKO12106](#) [CSKO12124](#)  
[CSKO12126](#) [CSKO12128](#) [CSKO1284](#) [CSKO16124](#) [CSKO16126](#) [CSKO16143](#) [CSKO16166](#) [CSKO16168](#)  
[CSKO18124](#) [CSKO18126](#) [CSKO18143](#) [CSKO18184](#) [CSKO20143](#) [CSKO202010](#) [CSKO24186](#) [CSKO242410](#)  
[CSKO24244](#) [CSKO24246](#) [CSKO24248](#) [CSKO302010](#) [CSKO30246](#) [CSKO362410](#) [CSKO36246](#) [CSKO443](#)  
[CSKO444](#) [CSKO644](#) [CSKO663](#) [CSKO664](#) [CSKO666](#) [CSKO863](#) [CSKO864](#) [CSKO884](#) [CSKO886](#)