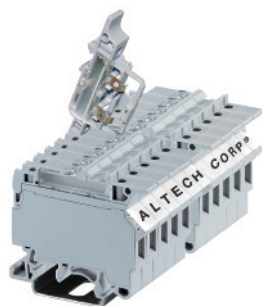


Certain electrical and control systems require protection by fuses. The terminal has a hinged carrier that has a specially designed space for a cartridge type glass fuse of size Ø5 x 20 or Ø5 x 25 mm. The fuse can be engaged or disengaged by the movement of the carrier.

Altech fuse terminals are also available with light indication - CF4U(L). A specially designed built-in circuit gives light indication in the event of fuse blow out. No polarity is required.

† Fuses are sold separately Altech, see pages 100-101

* Add required voltage to part number as a suffix. i.e. CF4U(L)/6-60 for 6-60 V AC/DC.



Terminal Width	
Height x Length	
Stripping Length	
Insulation Material	
Type of Connection	
LED Voltage	6-60 V AC/DC 90-240 V AC/DC
Type of Fuse Used	
Approvals	
Wire Range	
Voltage Rating	
Current Rating	
Torque	
Other Approvals	

Terminal Block

DIN Rail
for ordering information
refer to pages 90-91

End Stop
for ordering information
refer to page 92



Internal Jumper	2 pole 3 pole 4 pole 10 pole
-----------------	---------------------------------------



Insulated Internal Jumper	2 pole 3 pole 4 pole 10 pole
---------------------------	---------------------------------------



Current Bar	2 pole 3 pole 4 pole 10 pole
-------------	---------------------------------------



Shorting Sleeve & Screw



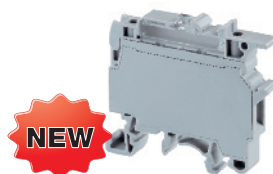
External Jumper	2 pole 3 pole 4 pole 10 pole
-----------------	---------------------------------------






Marking Tags (on terminal)
(on Lever)



CF4U†

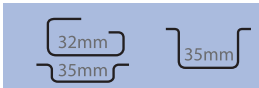


8 mm
57.6 x 57 mm
9.5 mm
Polyamide 6.6
4 screw clamps
Ø5x20, Ø5x25 mm
  
22-10 AWG 0.2-4 mm² 22-10 AWG
600 V 1000 V 600 V
10 A 6.3 A 10 A
7 lb-in 0.5 Nm 7 lb-in



Cat. No.	Std. Pk.
----------	----------

CF4U 100





CA702	50
CA802	50

CF4U(L)†*



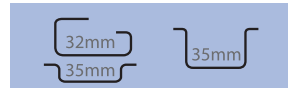
No Polarity Required.

8 mm
57.6 x 57 mm
9.5 mm
Polyamide 6.6
4 screw clamps
CF4U(L)/6-60 CF4U(L)/90-240
Ø5x20, Ø5x25 mm
  
22-10 AWG 0.2-4 mm² 22-10 AWG
600 V 600 V 600 V
10 A 6.3 A 10 A
7 lb-in 0.5 Nm 7 lb-in



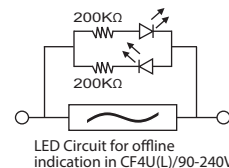
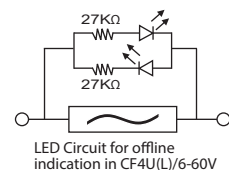
Cat. No.	Std. Pk.
----------	----------

CF4U(L)* 50



CA702	50
CA802	50

CF4U(L) Only












CA711/2	100
CA711/3	50
CA711/4	50
CA711/10	20

MT8	100
MT8	100

CA711/2	100
CA711/3	50
CA711/4	50
CA711/10	20

MT8	100
MT8	100

COLOR BLOCKS		
(other than standard grey)		
When ordering please add color suffix to Cat. No.		
Example for color Red: Cat.No./R		
Color	Ordering Suffix	
Red	R	
Yellow	Y	
Blue	BU	
Green	G	
Consult Altech for availability:		
Orange	O	
Beige	BG	
Dark Brown	DB	
Black	BL	
White	W	

Mouser Electronics

Authorized Distributor

Click to View Pricing, Inventory, Delivery & Lifecycle Information:

[Altech:](#)

[2511160](#)