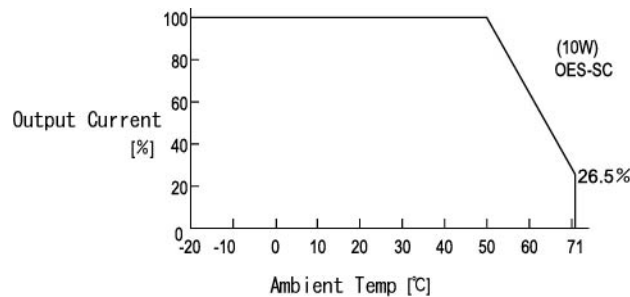


10 WATT DC-DC CONVERTER

OES- SC / WC 0512
SINGLE/ DUAL CHANNEL

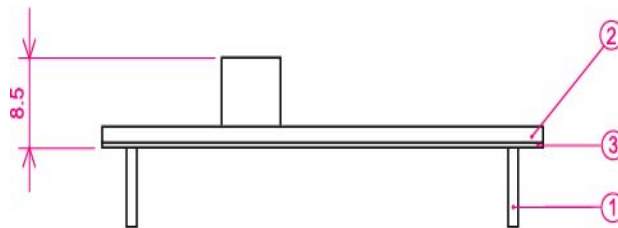
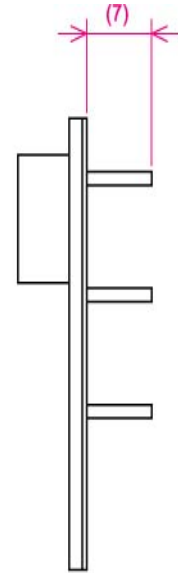
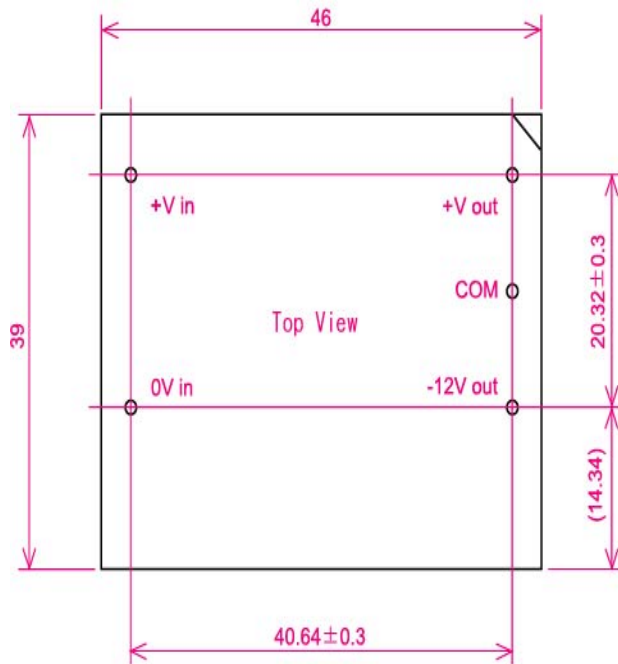
Specifications OES**SC/WC05 10WATTS/SINGLE/2 OUTPUT	Model					
	OES05SC05	OES12SC05	OES15SC05	OES24SC05	OES22WC05	OES23WC05
Input Characteristic						
Input Voltage DC[V]	5	5	5	5	5	5
Input Range DC[V]	4.5-9					
Inrush Current [A]	Not specified					
Input Range						
at no load [mA](typical)	36	34	28	41	83	90
at full load[mA](typical)	2500	2666	2530	2571	2700	2625
Line Back Noise [mVp-p](typical)	200	200	200	200	200	200
Efficiency [%] (typical) *1	80	81	83	84	80	80

Derating Curve



Specifications OES**SC/WC05 10WATTS/SINGLE/2 OUTPUT	Model							
	OES05SC05	OES12SC05	OES15SC05	OES24SC05	OES22WC05		OES23WC05	
Output Voltage [V]	5	12	15	24	+12	-12	+15	-15
Output Current [A]	2	0.9	0.7	0.45	0.45	0.45	0.35	0.35
Voltage Tolerance +/-[mV](maximum) *2	100	240	300	480	240		300	
Ripple and Noise [mVp-p](maximum) *3	100							
Regulation								
a.Static Line Regulation [mV](maximum)	25	60	75	120	60		75	
b.Dynamic Line Regulation +/-[mV](maximum) *4	200	360	450	750	360		450	
c.Static Load Regulation +/-[mV](maximum) *5	25	60	75	120	60		75	
+/-[mV](maximum) *6					+1200	-1200	+1500	-1500
+/-[mV](maximum) *7								
d.Temperature Coefficient *8	0.03%/°C(maximum)							
e.Drift[mV](maximum) *9	45	75	90	135	75		90	
f.Dynamic Load Regulation +/- [mV](maximum) *10	200	360	450	750	+720	-720	+900	-900
g.Recovery Time *4,*10	1mS(typical)							
Rise up time	500ms(typical) at rated input/output							
Hold up time	Not specified							
Functions								
Overcurrent Protection >=110% of Rated Output Current [A]	Current Limiting with automatic recovery							
	2.2	0.99	0.77	0.495	0.495	0.495	0.385	0.385
Overvoltage Protection	Not available							
Remote Sence	Not available							
Trimming of output voltage[mV]	Not available							
Input Fuse	Installed							
Environmental								
Operating Temperature	-20 to 71°C							
(derating)	3.5%/°C(50°C to 71°C) (out of warranty >= 71°C)							
Operating Humidity	20-90%/RH(non-condensing)							
Storage Temperature	-20 to +85°C							
Storage Humidity	20 to 90%/RH(non-condensing)							
Withstanding Voltage	Primary-Secondary AC500V for 1minute							
Isolation Resistance	Primary-Secondary 50MΩ(minimum) by DC500V insulation tester							
Capacitance(input-output) [pF](typical)	2200							
Vibration	5-10Hz:10mm double amplitude,10-55Hz:2G,20minutes' period for 60minutes each along X,Y,Z axes(non-operating)							
Shock	30G							
Cooling	Convection							
Weight (typical)	open board type:14g							

Dimension Diagram



① 1.0DIA PIN Material:BsB 2700 1/2H

Solder Plating

② Double-sided PCB FR4t=1.0

③ t=0.5 Insulator V0

* Tolerance ± 0.5

Mouser Electronics

Authorized Distributor

Click to View Pricing, Inventory, Delivery & Lifecycle Information:

[ETA-USA:](#)

[OES23WC05](#) [OES05SC05](#) [OES22WC05](#) [OES24SC05](#) [OES15SC05](#) [OES12SC05](#)