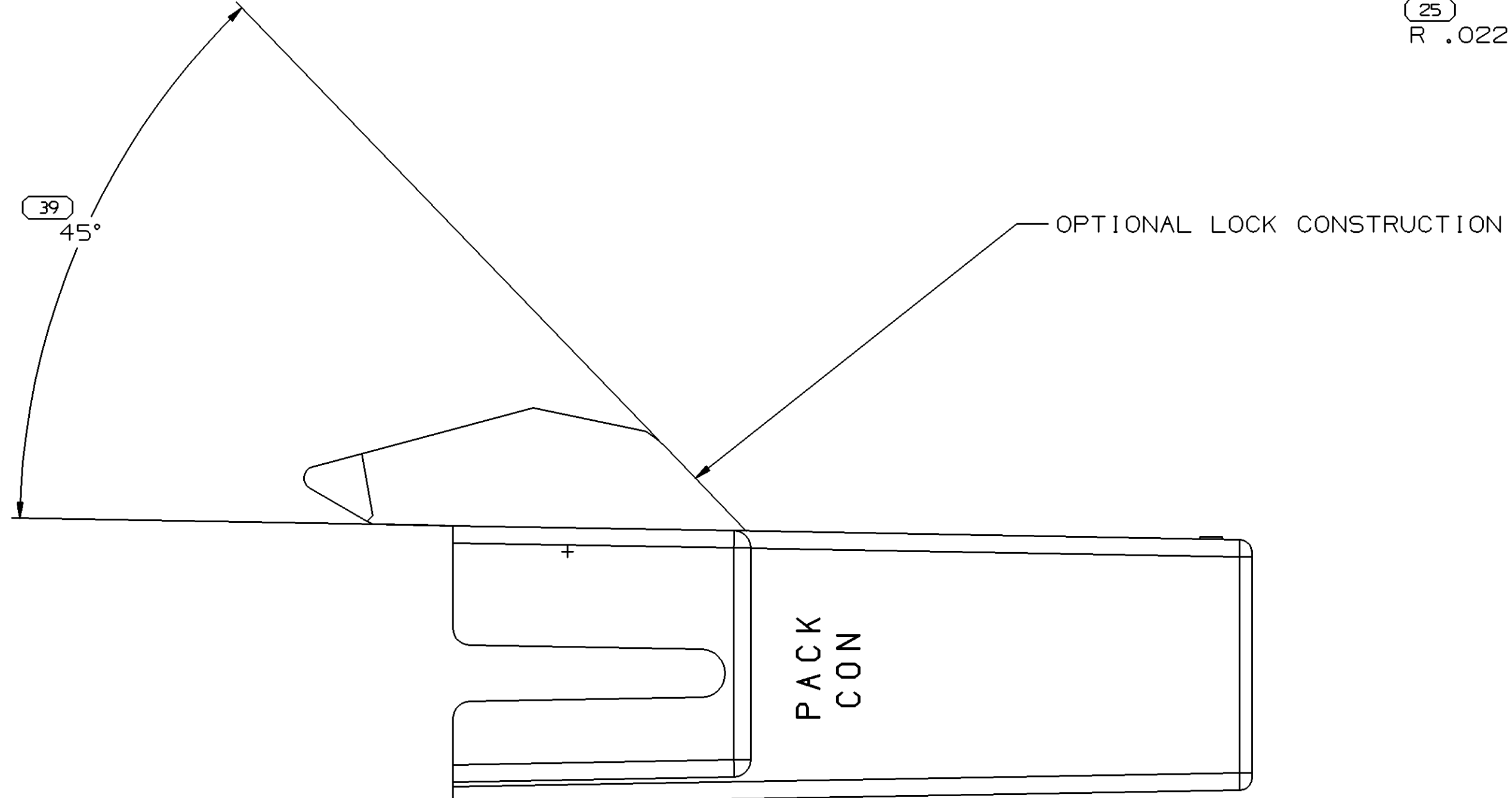
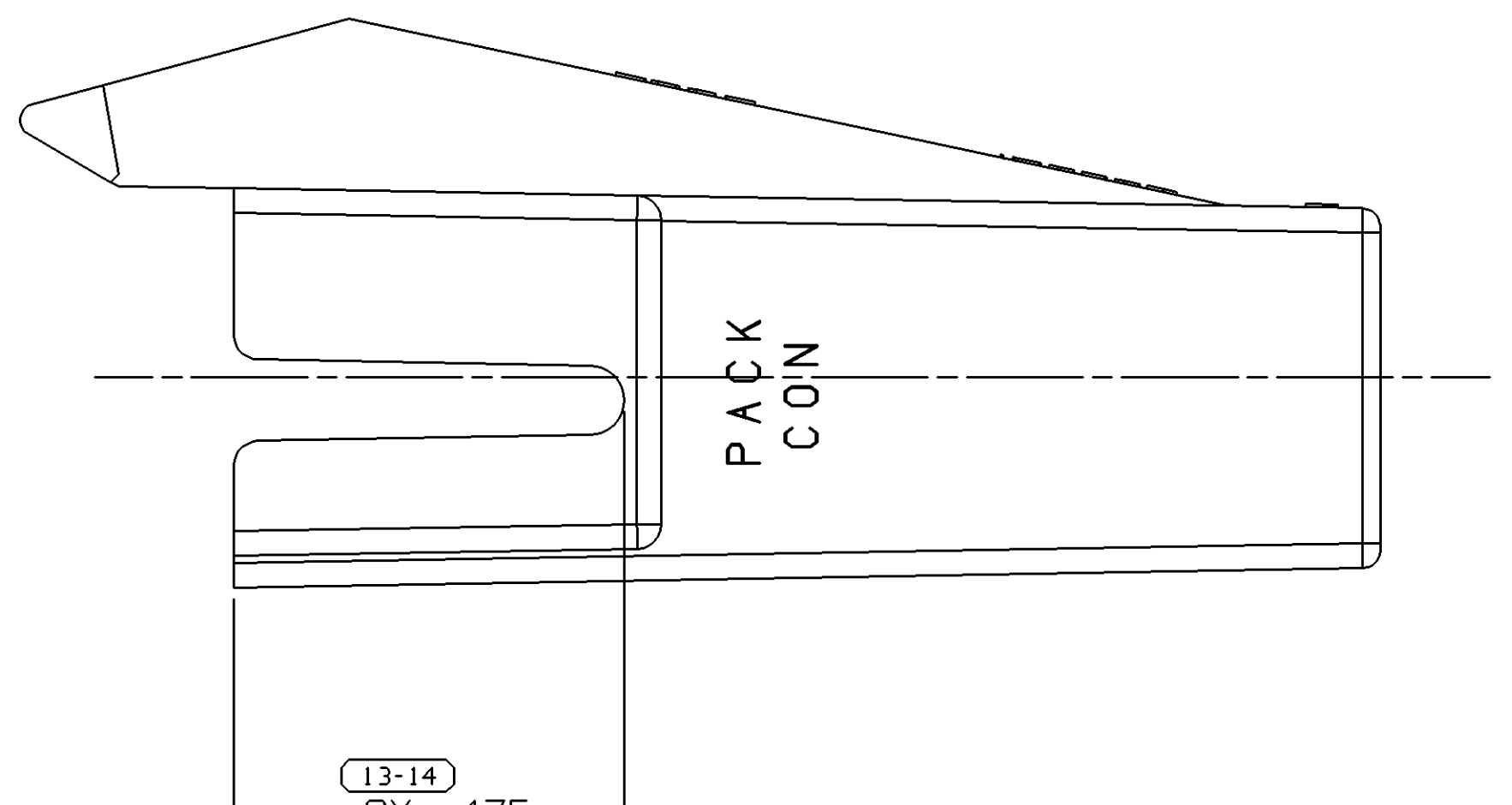
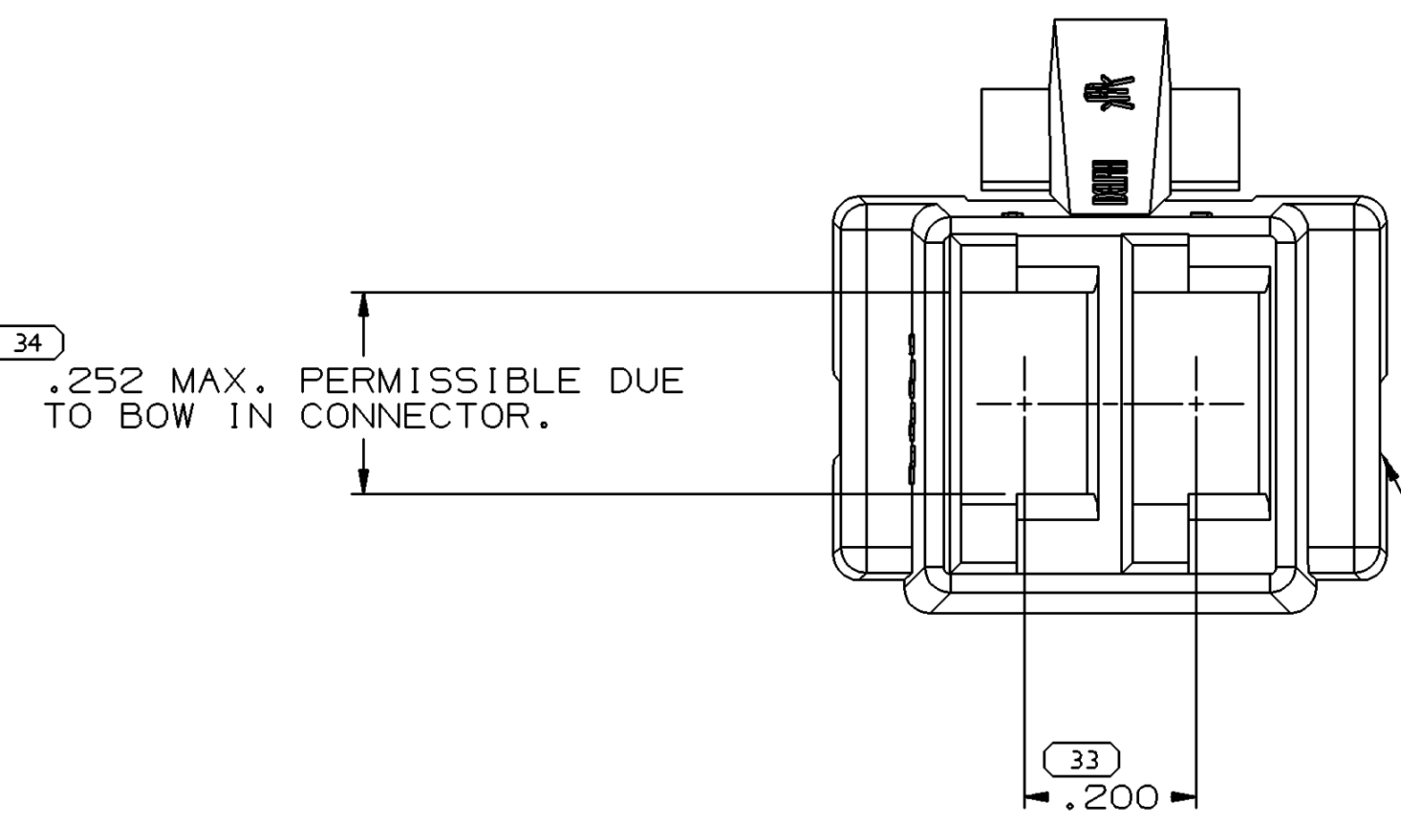
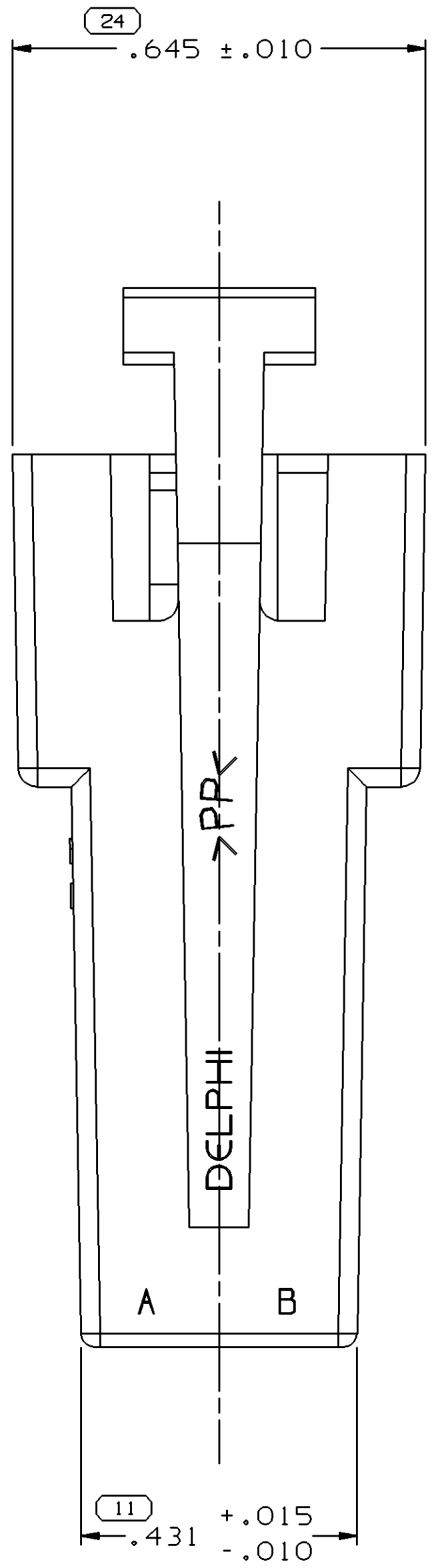
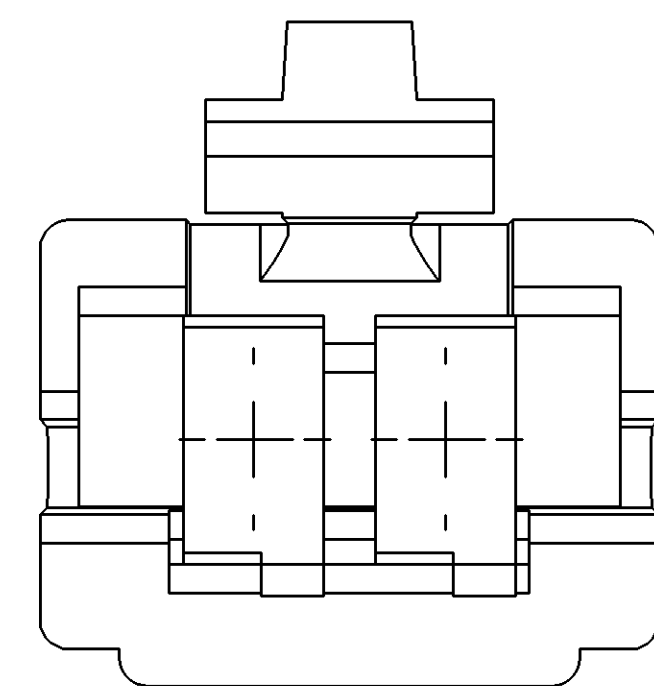
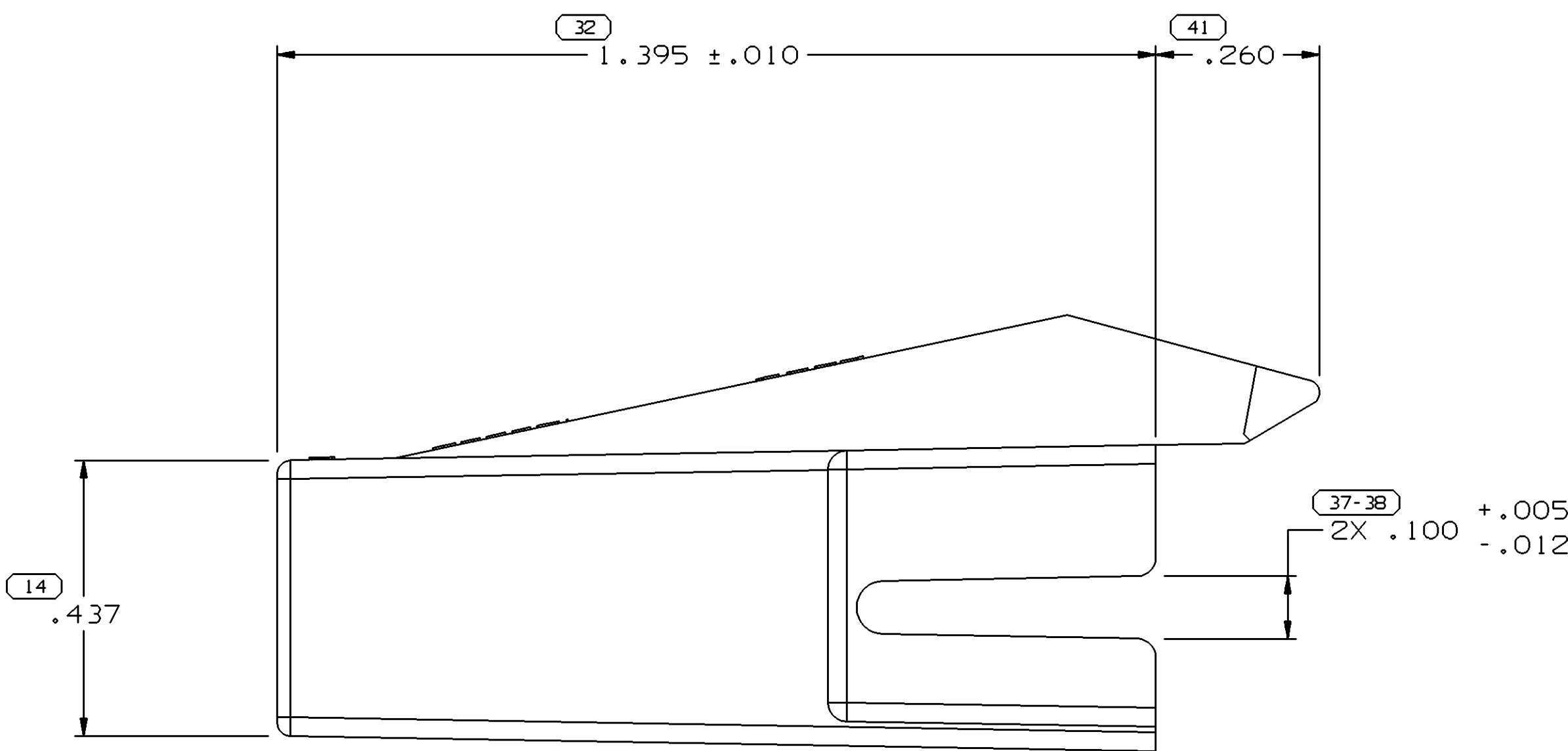
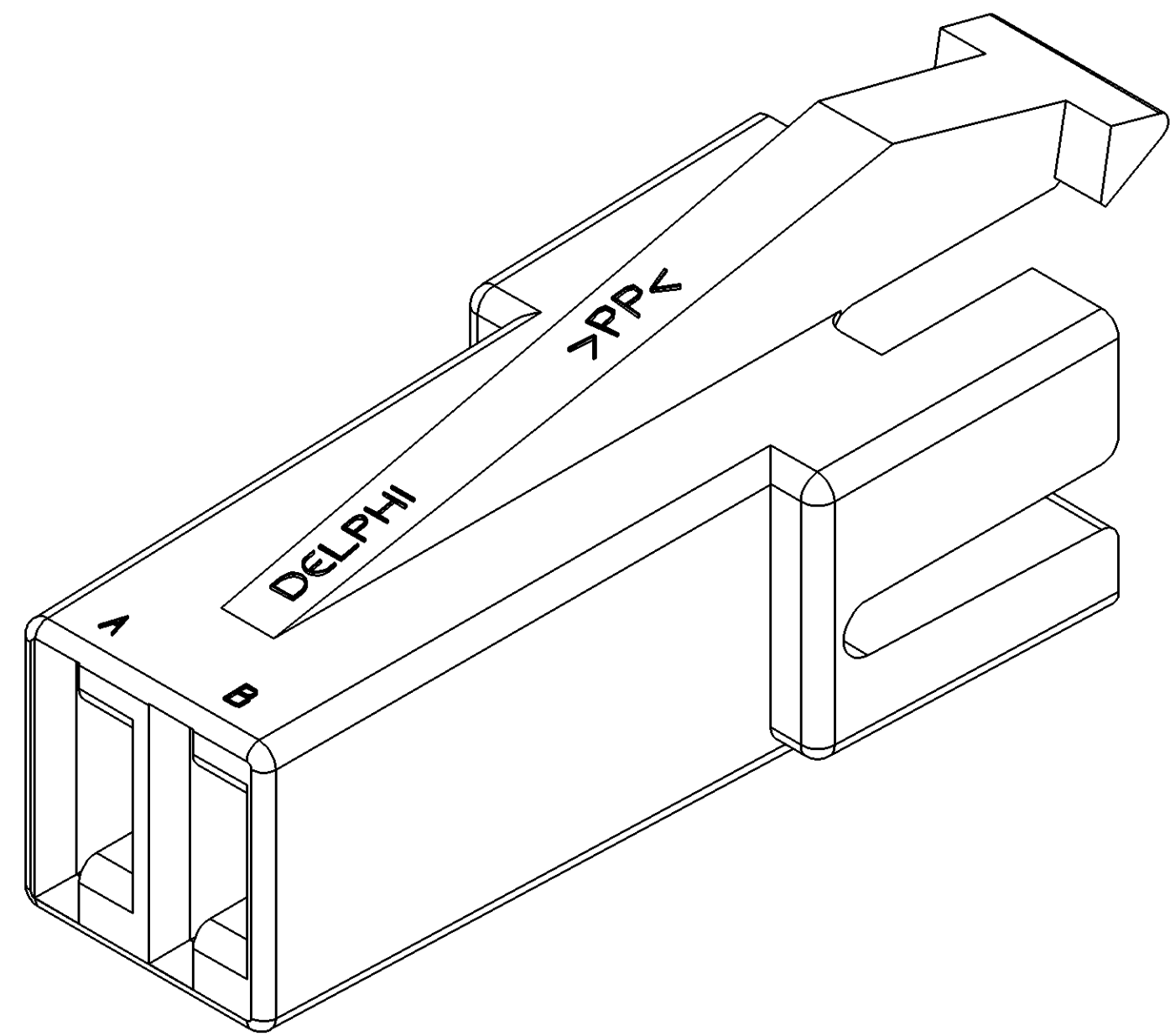


SYMBOL DEFINITION		MISSING NUMBERS		DWG STATUS		ZONE		REVISION HISTORY		AUTH		DR	
A DIMENSION WITHOUT AN INSPECTION REPORT SYMBOL ( ) DOES NOT REQUIRE INSPECTION. IT MAY BE CONTROLLED ON AN INDIVIDUAL COMPONENT DRAWING.	TOTAL NO. OF SYMBOLS ON DRAWING	14	1-2, 4-10, 12, 15-23, 26, 29-31, 35-36, 40,	110001	R	009	-	REVISED DIMENSIONS AND REVISED NOTES	214911	JYD	ESF	AL	2
	LAST NO. USED	41		170001	R	009	AA	ADDED NOTES (2 PLCS), MAT'L CODE AND DELPHI LOGO AND REVISED DIMENSIONS	216060	JYD	ESF	AL	M
				221001	R	010	-	REVISED GRAPHICS	219757	ESF	ESF	AL	
				120004	R	11	-	MATERIAL WAS R0067550, REMOVED DIMS	261225	MJM	MJM	ET	



OPTIONAL CONSTRUCTION

- NOTES
- UNLESS OTHERWISE SPECIFIED AND/OR INDICATED: DIMENSIONS ARE TO FACE OF VIEW SHOWN AND AUTOMATICALLY ROUNDED BY COMPUTER FOR INSPECTION (SEE MATH MODEL FOR PRECISE DIMENSIONS). FOR ALL OTHER DIMENSIONS NOT SHOWN BUT REQUIRED FOR TOOL BUILD, SEE MATH MODEL FOR PRECISE TOOL PATH DATA.
  - TOOL CAVITY IDENTIFICATION SHOULD BE LOCATED AS CLOSE TO THE GATE AS POSSIBLE.
  - MATERIAL RECYCLING CODE >PP< PER SAE J1344. (.06/.101X1.004) RAISED CHARACTERS AS SHOWN TO BE LOCATED ON ANY EXTERIOR SURFACE. OPTIONAL CONSTRUCTION TO BE NO MATERIAL RECYCLING CODE.
  - (.06/.101X1.004) RAISED DELPHI CORPORATE BRAND TO BE LOCATED ON ANY EXTERIOR SURFACE, PREFERABLY VISIBLE AT FINAL ASSEMBLY. OPTIONAL CONSTRUCTION TO BE "PED" OR NO LOGO.

DWG TYPE		PART DRAWING	
STYLE	D		
VOLUME (CM <sup>3</sup> )	0.199	DISTR CODE	
UNLESS OTHERWISE SPECIFIED			
THIS DOCUMENT IS IN ACCORDANCE WITH ASME Y14.5M-1994 AS AMENDED BY THE 2003 ADDENDUM AND THE 2009 ADDENDUM. ALL DIMENSIONS ARE TO BE SHOWN TO THE CENTER UNLESS OTHERWISE SPECIFIED. ALL DIMENSIONS ARE TO BE SHOWN TO THE CENTER UNLESS OTHERWISE SPECIFIED. ALL DIMENSIONS ARE TO BE SHOWN TO THE CENTER UNLESS OTHERWISE SPECIFIED.			
THIRD ANGLE PROJECTION	DO NOT SCALE	USE MATH DATA	

<b>DELPHI</b>					
DELPHI PACKARD ELECTRIC SYSTEMS WARREN, OH					
OR	DATE				
APPROVED BY: JYD	260022				
APPROVED BY: JYD	260022				
APPROVED BY: JYD	310022				
APPROVED BY: JYD					
SUBSTANCES OF CONCERN AND RECYCLED CONTENT PER DELPHI 10045001					
MATERIAL: M20977001 PP 1M BLK					
DRAWING NAME: CONN 2 F PAC/ON 1 BLK					
DRAWING NUMBER: 08911772					
SIZE: A1x3	SCALE: 5:1	FRAME NO: 1	SHEET NO: 1	REV: 1	REV: 1

DRAWING NUMBER: 08911772					
SIZE: A1x3	SCALE: 5:1	FRAME NO: 2	SHEET NO: 1	REV: 1	REV: 1

STC11680

# Mouser Electronics

Authorized Distributor

Click to View Pricing, Inventory, Delivery & Lifecycle Information:

[Delphi Connection Systems:](#)

[08911772](#)