

KSJ Series Spherical Actuator Tact Switches

Features/Benefits

- **Spherical actuator allows actuation force off center $\pm 30^\circ$ with regard to vertical**
- **RoHS compliant and compatible**
- **Designed for mechanisms**
- **Compliant side actuation**

Typical Applications

- **Automotive**
- **Cranes, off road, railway**
- **Factory automation**
- **Security systems**



Specification

FUNCTION: Momentary action
CONTACT ARRANGEMENT: 1 make contact = SPST, N.O.
DISTANCE BETWEEN BUTTON CENTERS (min.): 7.62 (0.300)
TERMINALS: PC pins
SEALING: IP60

Mechanical

Type	Actuation force N (grams)	Operating life (operations) axial	Operating life (operations) radial	Travel to make (mm)
KSJ0M21160SH	2 \pm 0,5	100,000	30,000	0,6 \pm 0,3
KSJ0M41180SH	3,0 \pm 0,8	100,000	30,000	0,55 \pm 0,25
KSJ0M21180SH	2 \pm 0,5	100,000	30,000	0,35 \pm 0,2
KSJ0M91180SH	3,9 \pm 0,8	100,000	30,000	0,7 \pm 0,25

Electrical

	Silver	Gold
MAXIMUM POWER:	1 VA	0.2 VA
MAXIMUM VOLTAGE:	32 VDC	32 VDC
MINIMUM VOLTAGE:	20 mV	20 mV
MAXIMUM CURRENT:	50 mA	10 mA
MINIMUM CURRENT:	1 mA	1 mA
DIELECTRIC STRENGTH (50 Hz, 1 min.): \geq 250 Vrms		
CONTACT RESISTANCE: \leq 100m Ω		
INSULATION RESISTANCE (100V): $\geq 10^9$ ohms		
BOUNCE TIME: \leq 1 ms		

Environmental

	Silver	Gold
OPERATING TEMPERATURE:	-40°C to 85°C	-40°C to 125°C
STORAGE TEMPERATURE:	-40°C to 85°C	-55°C to 125°C

Packaging

Delivered in boxes of 250 pieces.

Process

Wave soldering, compatible with lead free soldering profile.

NOTE: Specifications listed above are for switches with standard options.
For information on specific and custom switches, consult Customer Service Center.

This data sheet does not provide enough information for applications which require a certain level of quality or safety such as automotive, medical systems, safety equipment.
Please contact your sales representative to get contractual specification package.

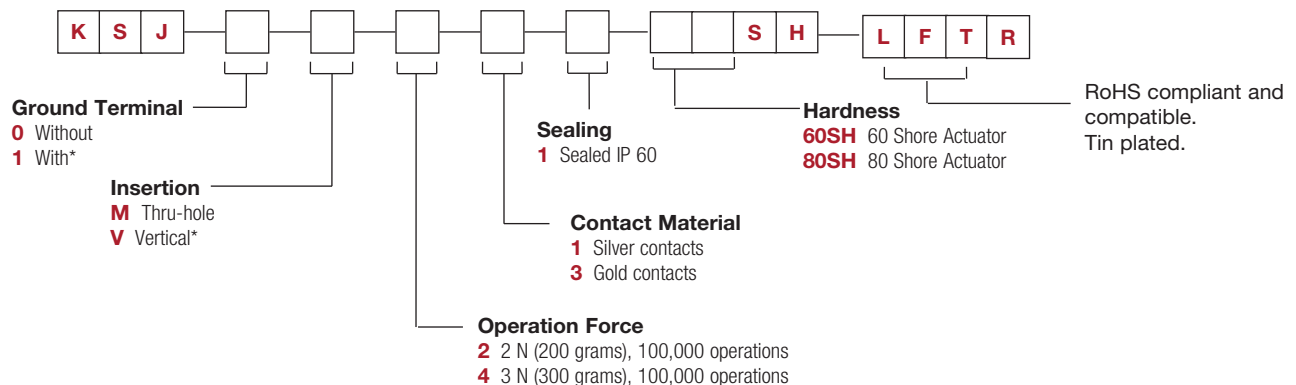
* Please contact your C&K representative for any question regarding the product integration.

How To Order

Our easy build-a-switch concept allows you to mix and match options to create the switch you need. To order, select desired option from each category and place it in the appropriate box.

However, please note that all the combinations of these options are not feasible.

For any part number different from those listed in the table above, please consult your local representative.

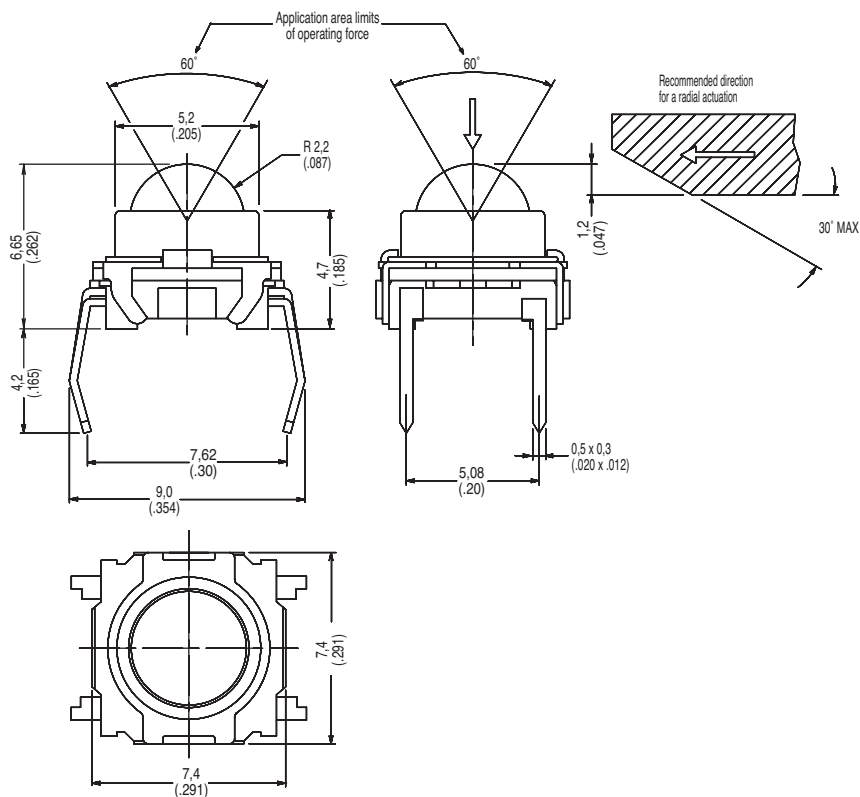


*Note: "1" ground terminal option not available with "V" version.
The bracket for the "V" version plays this role.



KSJ Series Spherical Actuator Tact Switches

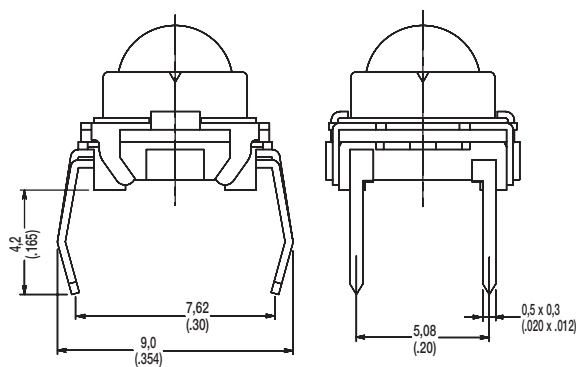
KSJ



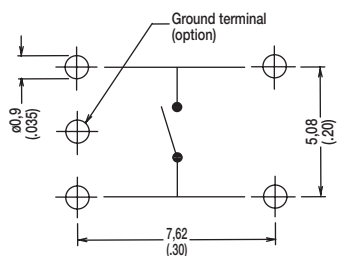
KSJ0M211

INSERTION

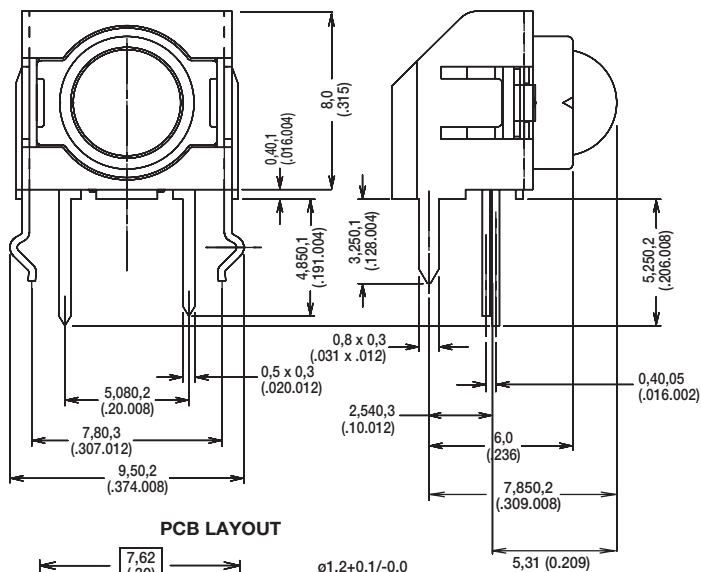
M THRU-HOLE



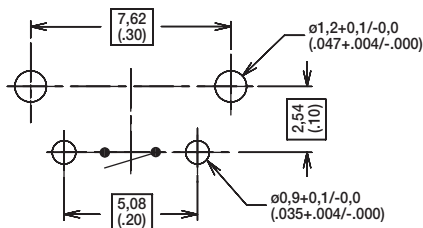
PCB LAYOUT



V VERTICAL



PCB LAYOUT



First Angle
Projection



26 jul 16

Mouser Electronics

Authorized Distributor

Click to View Pricing, Inventory, Delivery & Lifecycle Information:

C&K Components:

[KSJ0V43180SHLFT](#)

C&K Switches:

[KSJ0M43180SHLFT](#) [KSJ0M41180SHLFT](#) [Ksj0v23160shLft](#) [Ksj0v21160shLft](#) [KSJ0V41180SHLFT](#)
[KSJ1M41180SHLFT](#) [KSJ0V431 80SH LFTR](#) [KSJ0V211 60SH LFTR](#) [KSJ0V231 60SH LFTR](#) [KSJ0M431 80SH LFTR](#)
[KSJ0V411 80SH LFTR](#) [KSJ0M411 80SH LFTR](#) [KSJ0M41180SHLFTR](#) [KSJ0M43180SHLFTR](#) [KSJ0V21160SHLFTR](#)
[KSJ0V23160SHLFTR](#) [KSJ0V41180SHLFTR](#) [KSJ0V43180SHLFTR](#)