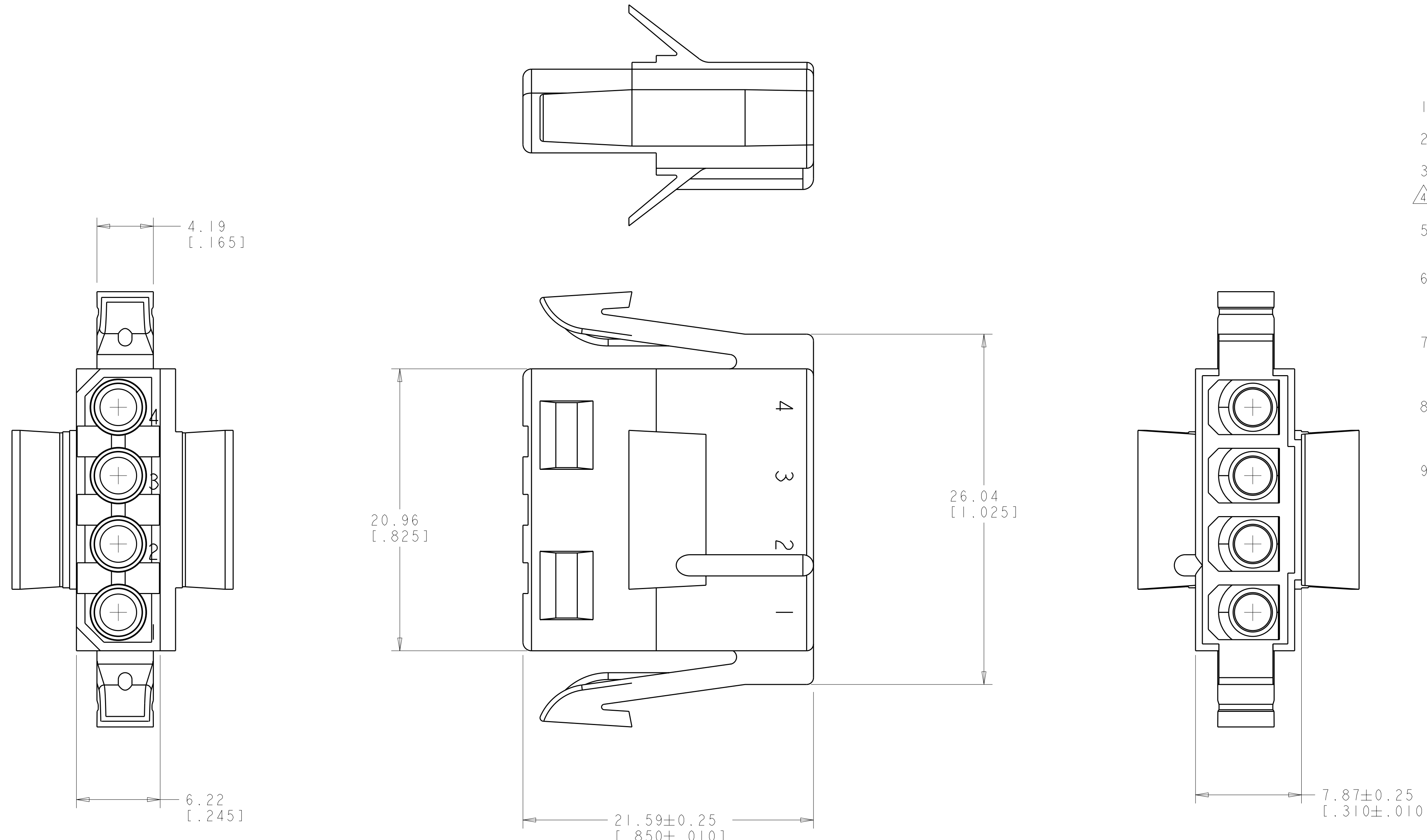
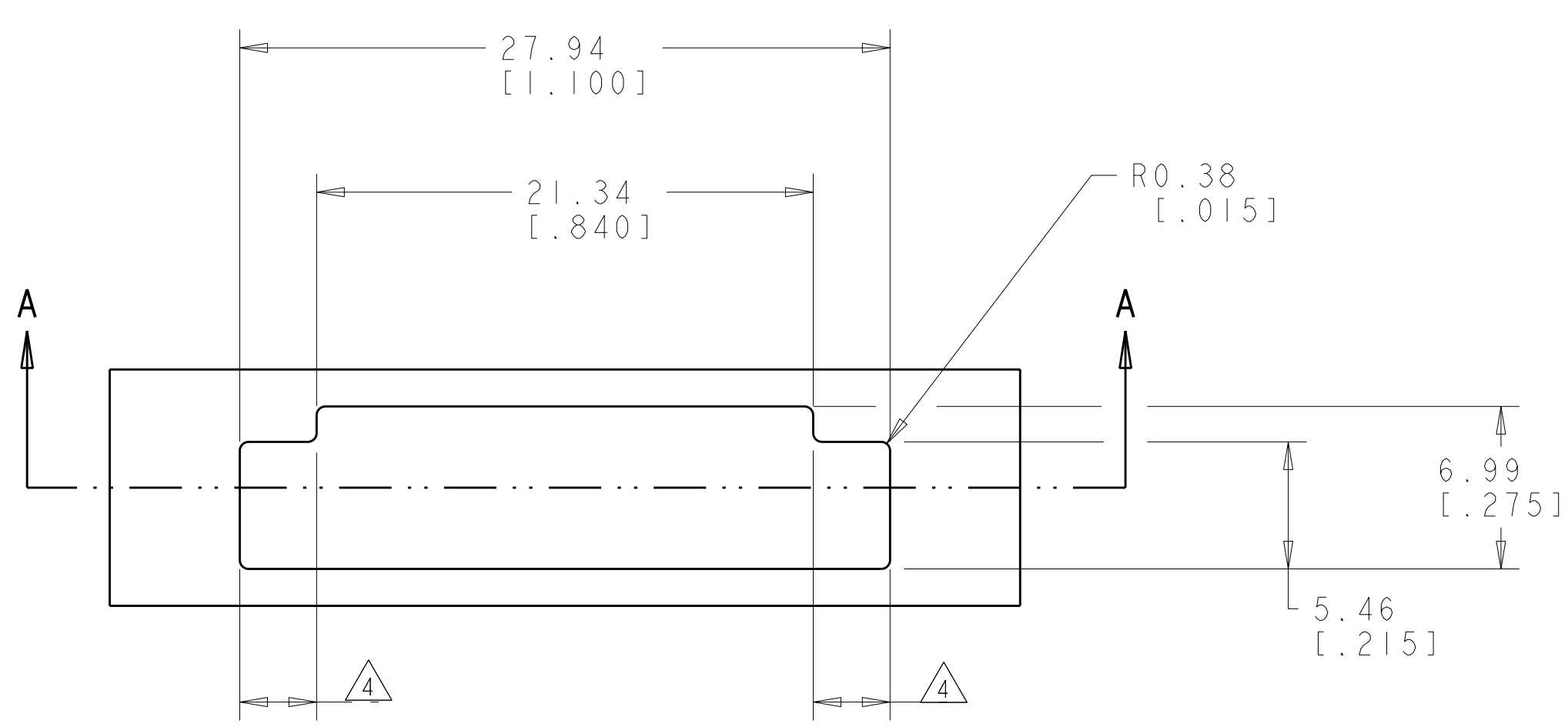


LOC	DIST	REVISIONS			
CM	00	REV	DATE	BY	CHKD
		R1	06APR2011	RK	HMR



1. THIS PLUG TO BE USED WITH CAP 480426.
2. TO BE USED WITH MATE-N-LOK SOCKETS.
3. RECOMMENDED PANEL THICKNESS 0.64 - 1.65 [.025 - .065].
4. DIMENSIONS TO BE EQUAL WITHIN 0.13 [.005].
5. THE PANEL MUST BE PUNCHED SO THAT THE HOUSING ENTERS THE PANEL IN THE SAME DIRECTION AS THE PUNCH.
6. BOTH LOCKING LEGS ARE TO BE SQUEEZED TOGETHER AND HOUSING INSERTED "STRAIGHT IN" AS OPPOSED TO A ROCKING MANNER OF INSERTION.
7. PANEL MUST NOT HAVE ANY MATERIAL (PAINT, PORCELAIN, ETC.) APPLIED IN THE MOUNTING HOLE AREA THAT WOULD DECREASE RETENTION OF THE HOUSING IN THE PANEL.
8. IF NOTES 5 AND 7 ARE NOT COMPLIED WITH THE 27.94 [1.100] DIMENSION SHOULD BE REDUCED TO 27.43 [1.080] TO ASSURE PROPER RETENTION IN THE PANEL.
9. DIMENSIONS IN BRACKETS ARE IN INCHES.)



DIRECTION OF HOUSING AND PUNCH ENTRY

SECTION A-A

RECOMMENDED MOUNTING INFORMATION

SCALE 4:1



NATURAL	HI-TEMP NYLON	3-480425-0
NATURAL	NYLON	1-480425-0
COLOR	MATERIAL	PART NUMBER

THIS DRAWING IS A CONTROLLED DOCUMENT.		DWN R. WHITAKER 05-OCT-2001	NAME	
DIMENSIONS: mm [INCHES]		CHK D. COLEY 05-OCT-2001	PRODUCT SPEC	
TOLERANCES UNLESS OTHERWISE SPECIFIED:		APVD D. COLEY 05-OCT-2001	APPLICATION SPEC	
9 PLC ±		WEIGHT		
1 PLC ±		CUSTOMER DRAWING		
3 PLC ±0.13 [1.005]		SCALE 5:1 SHEET 1 OF 1 REV R1		
5 PLC ±		RESTRICTED TO		
4 PLC ±		A100779C=480425		
ANGLES		SCALE 5:1 SHEET 1 OF 1 REV R1		
FINISH		SCALE 5:1 SHEET 1 OF 1 REV R1		



PLUG,
4 CIRCUIT, PANEL MOUNT,
MATE-N-LOK™

Mouser Electronics

Authorized Distributor

Click to View Pricing, Inventory, Delivery & Lifecycle Information:

[TE Connectivity:](#)

[1-480425-0](#)