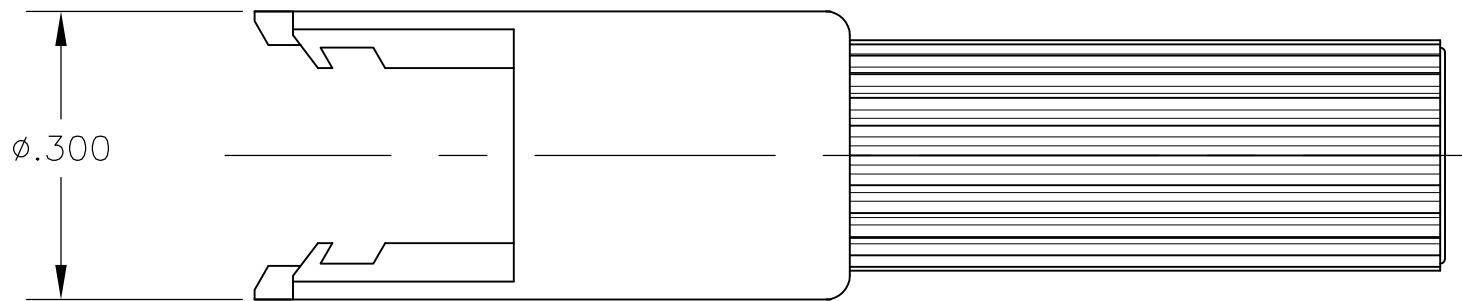
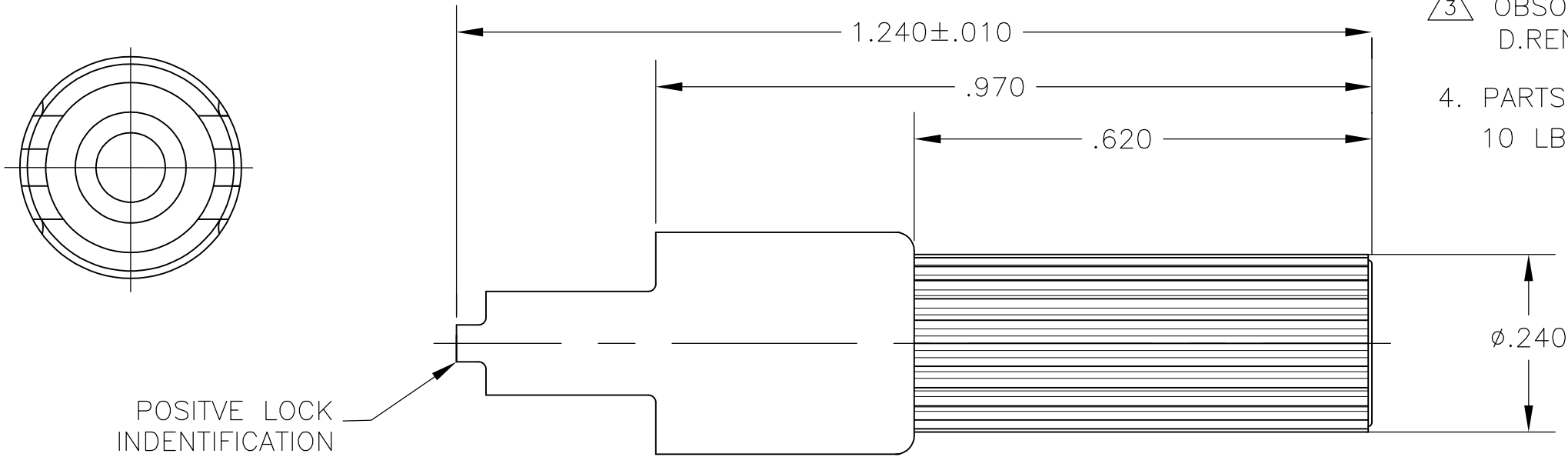


THIS DRAWING IS UNPUBLISHED. RELEASED FOR PUBLICATION  
 © COPYRIGHT BY TYCO ELECTRONICS CORPORATION. ALL RIGHTS RESERVED.

LOC CM DIST 00

REVISIONS					
P	LTR	DESCRIPTION	DATE	DWN	APVD
	H3	REVISED PER ECR-16-001655	15FEB2016	SC	DZ

1. TO BE USED WITH APPROPRIATE COMMERCIAL MATE-N-LOK(TM) PINS.
2. MATES WITH PLUG 480349.
3. OBSOLETE PARTS: OBSOLETE CIS STREAMLINING PER D.RENAUD/D.SINISI
4. PARTS SHALL HAVE AN EXTRACTION FORCE OF 10 LBS MINIMUM WHEN MATED WITH 480349 PARTS.



3	OBSOLETE	COLOR	PART NUMBER
		BLACK	<del>1-480351-9</del>
		GREEN	1-480351-5
		RED	1-480351-2
		NATURAL	1-480351-0
		COLOR	PART NUMBER

THIS DRAWING IS A CONTROLLED DOCUMENT.		DWN K. WHITAKER 15SEP2006	Tyco Electronics Corporation Harrisburg, PA 17105-3608				
DIMENSIONS: INCHES	TOLERANCES UNLESS OTHERWISE SPECIFIED: 0 PLC ± 1 PLC ± 2 PLC ±.005 3 PLC ± 4 PLC ± ANGLES ±0°30'	CHK D. COLEY 15SEP2006	NAME CAP, SINGLE CIRCUIT, COMMERCIAL MATE-N-LOK(TM)				
		APVD D. COLEY 15SEP2006					
MATERIAL NYLON,94V-2	FINISH -	PRODUCT SPEC	SIZE	CAGE CODE	DRAWING NO	RESTRICTED TO -	
		APPLICATION SPEC	A3	00779	C-480351		
		WEIGHT -	CUSTOMER DRAWING		SCALE 5:1	SHEET 1 OF 1	REV H3

# Mouser Electronics

Authorized Distributor

Click to View Pricing, Inventory, Delivery & Lifecycle Information:

[TE Connectivity:](#)

[1-480351-0](#)