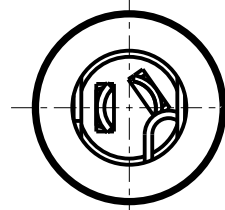
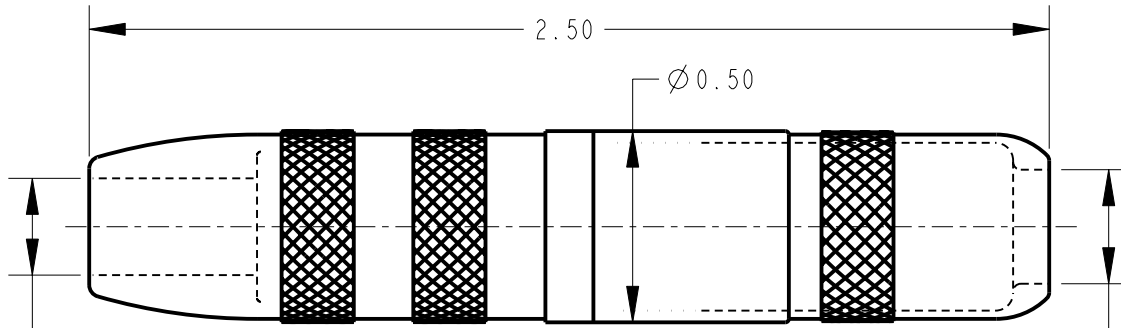
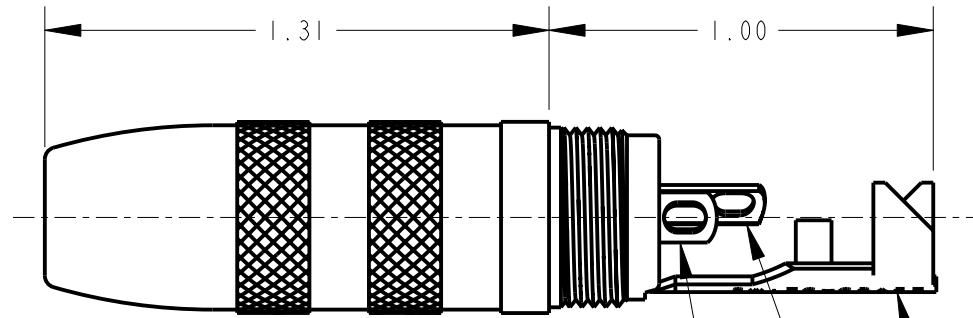


Ø0.25



Ø0.30



VIEW SHOWN WITH HANDLE REMOVED

SLEEVE TERMINAL CABLE CLAMP

"R" - RING TERMINAL

"T" - TIP TERMINAL

NOTES:

- MATERIALS
 HOUSING & HANDLE - COPPER ALLOY, NICKEL PLATED
 SPRINGS & GROUND CLIP - COPPER ALLOY
 CABLE CLAMP - STEEL, TIN PLATED
 INSULATOR - NYLON
 WASHER - PHENOLIC

2. THIS PRODUCT IS RoHS COMPLIANT.

CUSTOMER DRAWING

					★ STAR SYMBOL DENOTES CRITICAL DIMENSION	THIS DRAWING DESCRIBES A DESIGN CONSIDERED PROPRIETARY IN NATURE, DEVELOPED AND MANUFACTURED BY SWITCHCRAFT INC. AND IS RELEASED ON A CONFIDENTIAL BASIS FOR IDENTIFICATION PURPOSES ONLY.					
					UNLESS OTHERWISE SPECIFIED	SIZE	WIDTH	MULT	LBS/M	TEMPER	
					1. ALL DIMENSIONS IN INCHES - TWO PLACE DECIMALS ±0.01 - THREE PLACE DECIMALS ±0.005 - ANGLES ±1° - ALL DIA. CONCENTRIC WITHIN 0.005 T.I.R.	FINISH			MATERIAL		
					2. FEATURES ON THE SAME CENTERLINE MUST BE ALIGNED WITHIN ±0.002	SPEC No.		SCALE		SPEC No.	
					3. REMOVE ALL BURRS	FIRST USED ON		SCALE		Switchcraft®	
F	21962	5-13-09	TJK	TJK		DATE DRAWN	BY	CHKD	APVD		
						13-May-09	TJK	TJK	TJK		
								5-13-09	5-13-09		
REV	ECO NUMBER	DATE	BY	APVD		NAME			PART No.		REV
					DO NOT SCALE DRAWING	EXTENSION JACK			131		F
						Ø 1/4" - 3 CONDUCTOR, RoHS					

Mouser Electronics

Authorized Distributor

Click to View Pricing, Inventory, Delivery & Lifecycle Information:

[Switchcraft:](#)

[131](#)