

MOS FET Relays

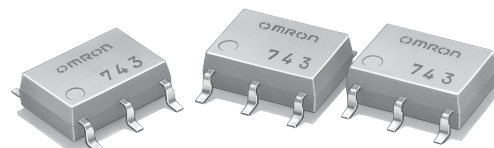
G3VM-201H1

Slim, 2.1-mm High, MOS FET Relay with Miniature, Flat, 6-pin SOP Package

- 6-pin SOP package in the 200-V load voltage series.
- Continuous load current of 200 mA.
- Dielectric strength of 1,500 Vrms between I/O.
- RoHS Compliant.

Application Examples

- Broadband systems
- Measurement devices
- Data loggers
- Amusement machines



Note: The actual product is marked differently from the image shown here.

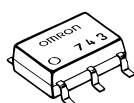
List of Models

Contact form	Terminals	Load voltage (peak value)	Model	Number per stick	Number per tape
SPST-NO	Surface-mounting terminals	200 VAC	G3VM-201H1	75	---
			G3VM-201H1(TR)	---	2,500

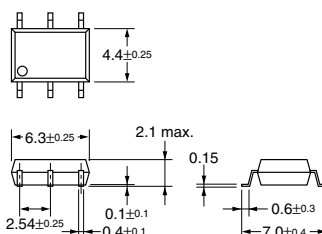
Dimensions

Note: All units are in millimeters unless otherwise indicated.

G3VM-201H1



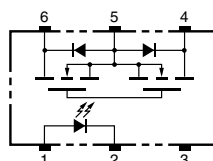
Note: The actual product is marked differently from the image shown here.



Weight: 0.13 g

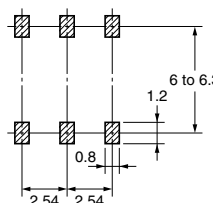
Terminal Arrangement/Internal Connections (Top View)

G3VM-201H1



Actual Mounting Pad Dimensions (Recommended Value, Top View)

G3VM-201H1

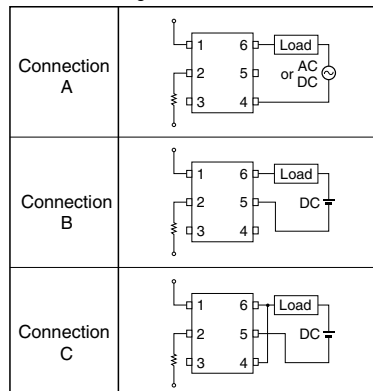


■ Absolute Maximum Ratings (Ta = 25°C)

Item		Symbol	Rating	Unit	Measurement conditions
Input	LED forward current	I_F	50	mA	
	Repetitive peak LED forward current	I_{FP}	1	A	100 μ s pulses, 100 pps
	LED forward current reduction rate	$\Delta I_F/^\circ\text{C}$	-0.5	mA/°C	$T_a \geq 25^\circ\text{C}$
	LED reverse voltage	V_R	5	V	
	Connection temperature	T_J	125	°C	
Output	Load voltage (AC peak/DC)	V_{OFF}	200	V	
	Continuous load current	Connection A	I_O	200	mA
		Connection B		200	
		Connection C		400	
	ON current reduction rate	Connection A	$\Delta I_{ON}/^\circ\text{C}$	-2.0	mA/°C
		Connection B		-2.0	
		Connection C		-4.0	
	Connection temperature	T_J	125	°C	
Dielectric strength between input and output (See note 1.)		V_{I-O}	1,500	V_{rms}	AC for 1 min
Operating temperature		T_a	-40 to +85	°C	With no icing or condensation
Storage temperature		T_{stg}	-55 to +125	°C	With no icing or condensation
Soldering temperature (10 s)		---	260	°C	10 s

Note: 1. The dielectric strength between the input and output was checked by applying voltage between all pins as a group on the LED side and all pins as a group on the light-receiving side.

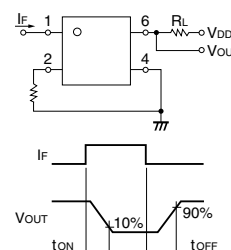
Connection Diagram



■ Electrical Characteristics (Ta = 25°C)

Item		Symbol	Minimum	Typical	Maximum	Unit	Measurement conditions
Input	LED forward voltage	V_F	1.0	1.15	1.3	V	$I_F = 10 \text{ mA}$
	Reverse current	I_R	---	---	10	μA	$V_R = 5 \text{ V}$
	Capacity between terminals	C_T	---	30	---	pF	$V = 0, f = 1 \text{ MHz}$
	Trigger LED forward current	I_{FT}	---	1	3	mA	$I_O = 200 \text{ mA}$
Output	Maximum resistance with output ON	Connection A	R_{ON}	---	5	Ω	$I_F = 5 \text{ mA}, I_O = 200 \text{ mA}$
		Connection B		---	3	Ω	$I_F = 5 \text{ mA}, I_O = 200 \text{ mA}$
		Connection C		---	1.5	Ω	$I_F = 5 \text{ mA}, I_O = 400 \text{ mA}$
	Current leakage when the relay is open	I_{LEAK}	---	0.00035	1.0	μA	$V_{OFF} = 200 \text{ V}$
	Capacity between terminals A Connection	C_{OFF}	---	100	---	pF	$V = 0, f = 1 \text{ MHz}$
Capacity between I/O terminals		C_{I-O}	---	0.8	---	pF	$f = 1 \text{ MHz}, V_s = 0 \text{ V}$
Insulation resistance		R_{I-O}	1,000	---	---	$M\Omega$	$V_{I-O} = 500 \text{ VDC}, R_{oh} \leq 60\%$
Turn-ON time		t_{ON}	---	0.6	1.5	ms	$I_F = 5 \text{ mA}, R_L = 200 \Omega, V_{DD} = 20 \text{ V}$ (See note 2.)
Turn-OFF time		t_{OFF}	---	0.1	1.0	ms	

Note: 2. Turn-ON and Turn-OFF Times



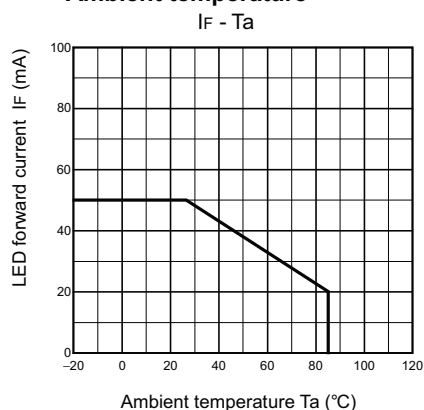
■ Recommended Operating Conditions

Use the G3VM under the following conditions so that the Relay will operate properly.

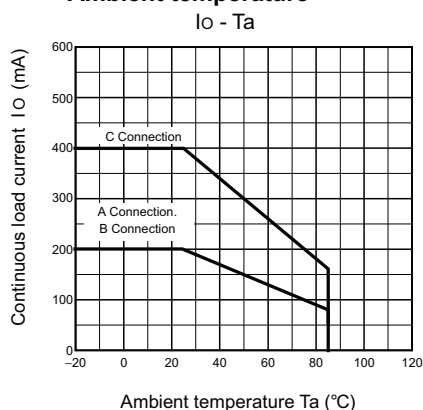
Item	Symbol	Minimum	Typical	Maximum	Unit
Load voltage (AC peak/DC)	V_{DD}	---	---	160	V
Operating LED forward current	I_F	5	7.5	25	mA
Continuous load current (AC peak/DC)	I_O	---	---	130	mA
Operating temperature	T_a	-20	---	60	°C

■ Engineering Data

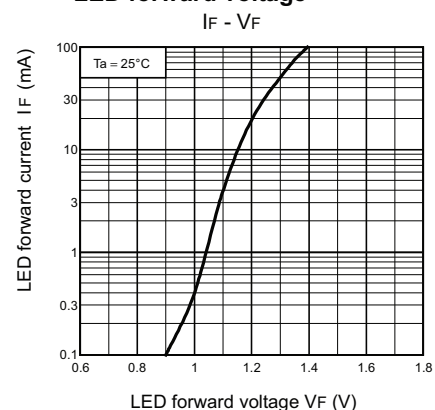
LED forward current vs.
Ambient temperature



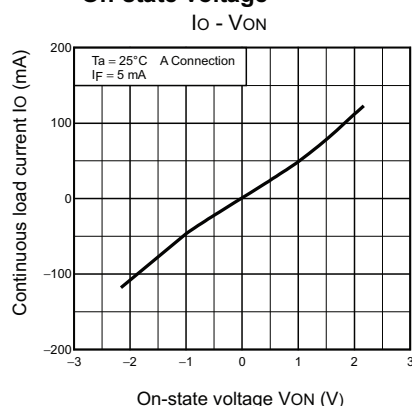
Continuous load current vs.
Ambient temperature



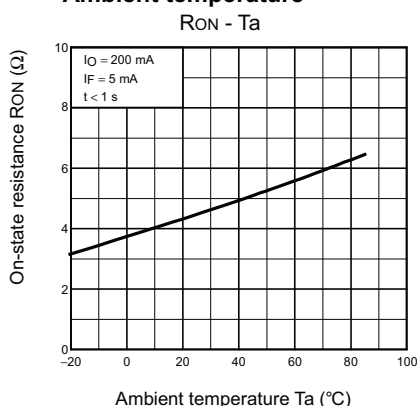
LED forward current vs.
LED forward voltage



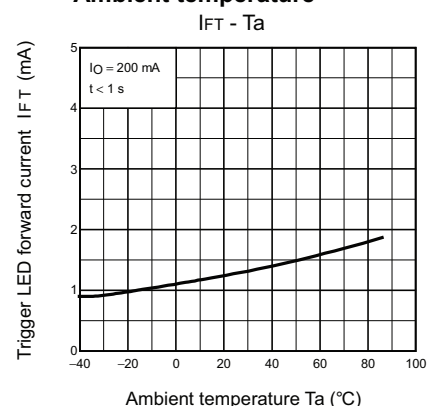
Continuous load current vs.
On-state voltage



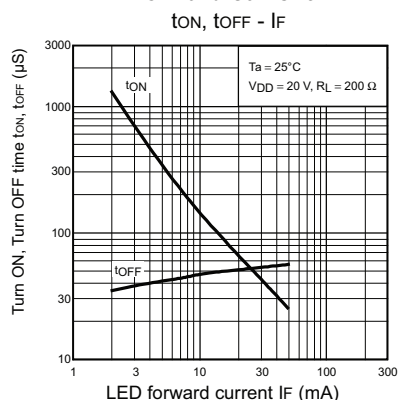
On-state resistance vs.
Ambient temperature



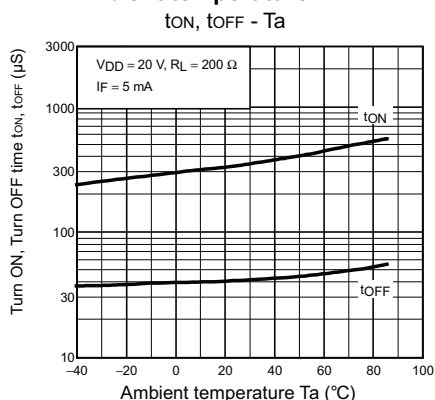
Trigger LED forward current vs.
Ambient temperature



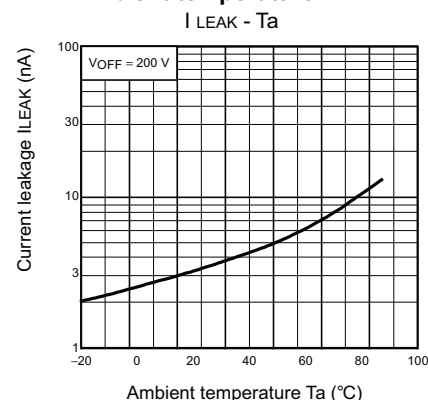
Turn ON, Turn OFF time vs.
LED forward current



Turn ON, Turn OFF time vs.
Ambient temperature



Current leakage vs.
Ambient temperature



All sales are subject to Omron Electronic Components LLC standard terms and conditions of sale, which can be found at http://www.components.omron.com/components/web/webfiles.nsf/sales_terms.html

ALL DIMENSIONS SHOWN ARE IN MILLIMETERS.

To convert millimeters into inches, multiply by 0.03937. To convert grams into ounces, multiply by 0.03527.

OMRON[®]

**OMRON ELECTRONIC
COMPONENTS LLC**

55 E. Commerce Drive, Suite B
Schaumburg, IL 60173

847-882-2288

OMRON ON-LINE

Global - <http://www.omron.com>

USA - <http://www.components.omron.com>

Cat. No. X302-E-1

12/10

Specifications subject to change without notice

Printed in USA

Mouser Electronics

Authorized Distributor

Click to View Pricing, Inventory, Delivery & Lifecycle Information:

Omron:

G3VM-201H1