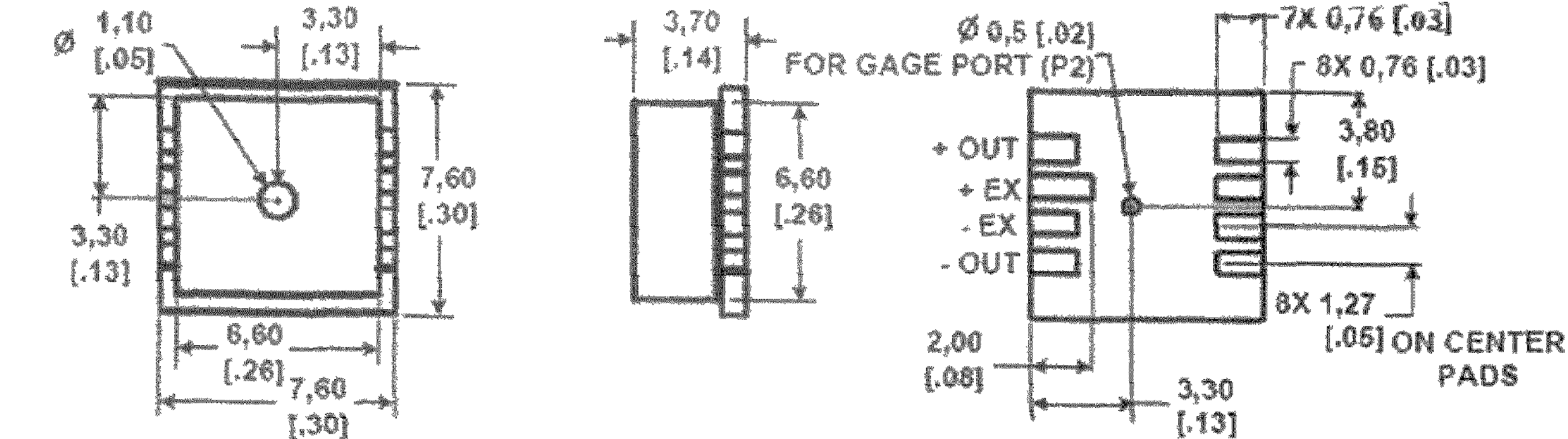
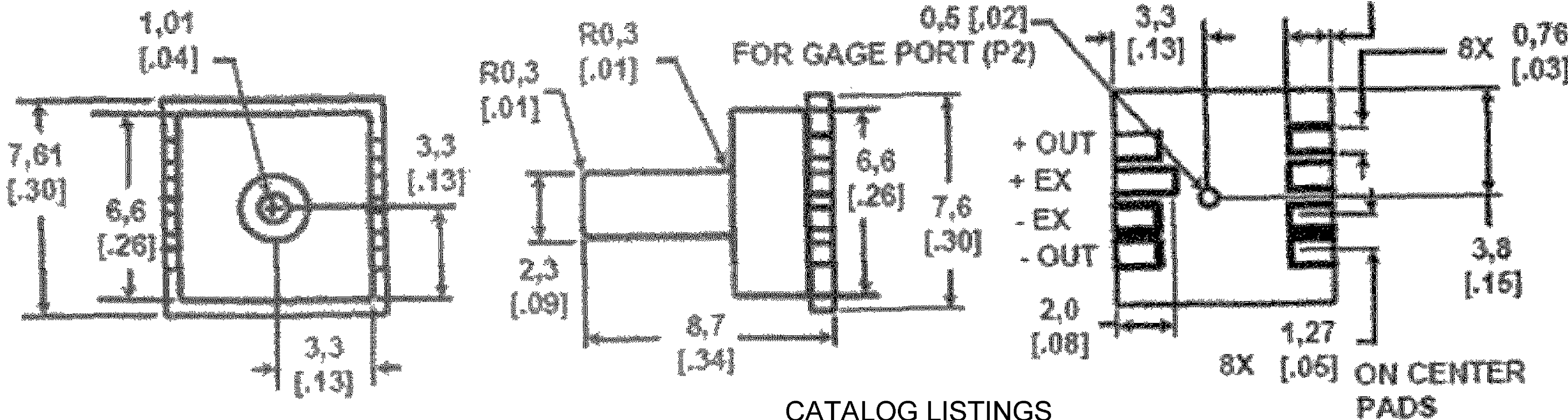


Performance Specifications					
Characteristics	Pressure Range (psi)	MIN	TYP	MAX	UNITS
Zero Pressure Offset	ALL	-35	-20	0	mV
Sensitivity	01		3.90		mV/psi
	05		2.70		
	15		1.50		
	30		0.86		
	60		0.50		
	100		0.30		
	150		0.14		
Temperature Coefficient of Span	ALL		-2150		ppm/degC
Temperature Coefficient of Offset	ALL		4		uV/V/degC
Combined Linearity and Hysteresis	ALL		0.2		%FS
Long Term Stability	ALL		0.1		mV
Response Time (10% to 90%)	ALL		100		us
Input Resistance	ALL		4.1		kohms
Temperature Coefficient of Resistance	ALL		750		ppm/degC
Output Impedance	ALL		4.1		kohms
Repeatability	ALL		0.5		%FSS
Overpressure	01, 05		20		psi
	15		30		
	30		60		
	60		90		
	100		150		
	150		200		

Specifications	
Characteristics	Maximum Ratings
Supply voltage	12 Vdc
Operating Temperature	-40C to +125C
Storage Temperature	-55C to +125C
Lead Temperature (Soldering 2s to 4s)	250C



PORTED "P" SMT

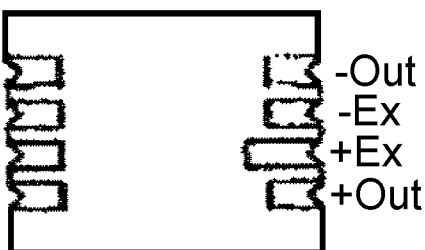
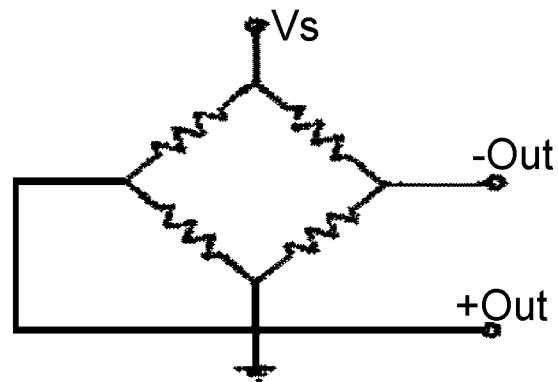


CATALOG LISTINGS


SX01GSMT	SX100ASMT
SX01GSMT P	SX100GSMT
SXP01GSMT P	SX100GSMT P
	SXP100ASMT
SXP05GSMT P	SXP100GSMT P
SX15ASMT	SX150ASMT
SX15ASMT P	SX150GSMT
SX15GSMT	SXP150ASMT
SXP15ASMT P	SXP150ASMT P
SXP15GSMT P	SXP150GSMT

SX30ASMT
SX30GSMT
SXP30ASMT P

EQUIVALENT CIRCUITS



- NOTES:
- REFERENCE CONDITIONS: SUPPLY VOLTAGE, VS= 5.0 Vdc, TEMP = 0degC TO 70degC
 - IF MAXIMUM PRESSURE IS EXCEEDED, EVEN MOMENTARILY, THE PACKAGE MAY LEAK OR BURST, OR THE PRESSURE SENSING DIE MAY FRACTURE.
 - SENSITIVITY IS THE RATIO OF THE OUTPUT SIGNAL VOLTAGE CHANGE TO INPUT PRESSURE CHANGE. THE SENSITIVITY IS CHARACTERIZED BY DESIGN AND PERIODIC PRODUCTION TESTING. THIS PARAMETER IS NOT 100% TESTED IN PRODUCTION.
 - TEMPERATURE COEFFICIENT IS DEFINED AS BEST FIT STRAIGHT LINE FIT FOR OPERATION BETWEEN 0degC TO 70degC.
 - TEMPERATURE COEFFICIENT IS NOT 100% TECTED. IT IS DEFINED BY PROCESS DESIGN.
 - SLOPE OF BEST FIT STRAIGHT LINE FIT FOR OPERATION BETWEEN 0degC TO 70degC.
 - LONG TERM STABILITY OVER A ONE YEAR PERIOD.
 - RESPONSE TIME FOR 0 psi TO FULL SCALE SPAN PRESSURE STEP CHANGE.

DESIGN UNITS: MM			DRAWN		SK		19OCT06		<div>Honeywell</div>															
TOLERANCES UNLESS NOTED:			CHECK		CMH		19OCT06																	
NO PLACE X ± 1,000			THIS DRAWING COVERS A PROPRIETARY ITEM AND IS THE PROPERTY OF HONEYWELL. THIS DRAWING IS NOT TO BE COPIED OR USED WITHOUT THE PERMISSION OF HONEYWELL.						TITLE		PRESSURE SENSOR													
ONE PLACE .X ± 0,4																								
TWO PLACE .XX ± 0,15																								
THREE PLACE .XXX ± 0,005																								
FOUR PLACE .XXXX ± 0,0050																								
ANGLES X ± 3			INTERPRET PER ASME Y14.5M-1994 OTHER HONEYWELL ENGINEERING STANDARDS MAY APPLY.						SIZE		D		TYPE		I		DRAWING NAME		SX SMT SERIES CHART 1		REV		B	
THIRD ANGLE PROJECTION			RASTER						SCALE		NONE		SHEET				1 OF 1							
																								

Mouser Electronics

Authorized Distributor

Click to View Pricing, Inventory, Delivery & Lifecycle Information:

Honeywell:

[SXP30ASMT](#) [SXP01GSMT](#) [SXP150ASMT](#) [SXP150ASMT](#)