

PRODUCT NUMBER

75869-YXXLF

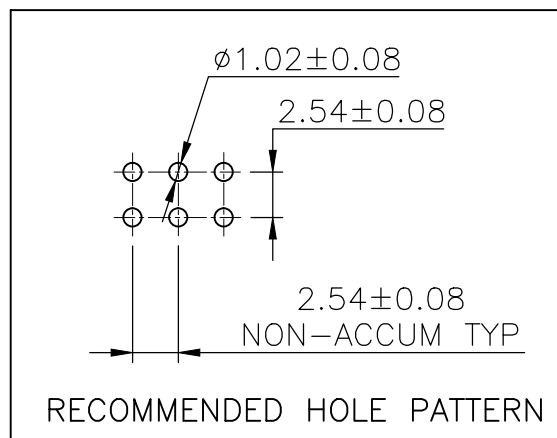
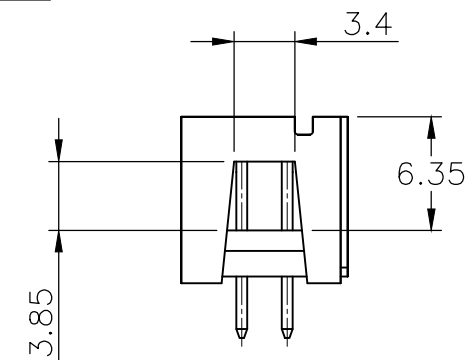
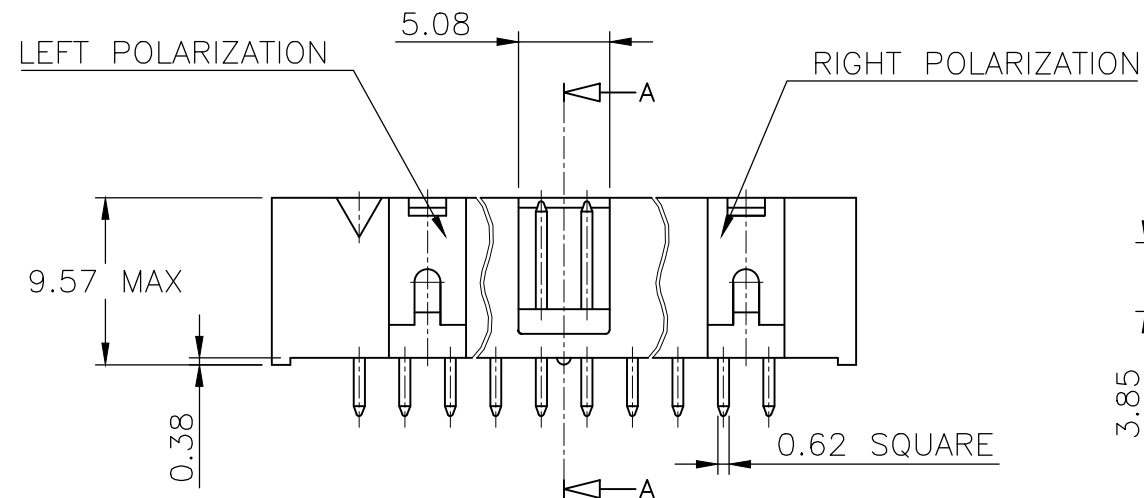
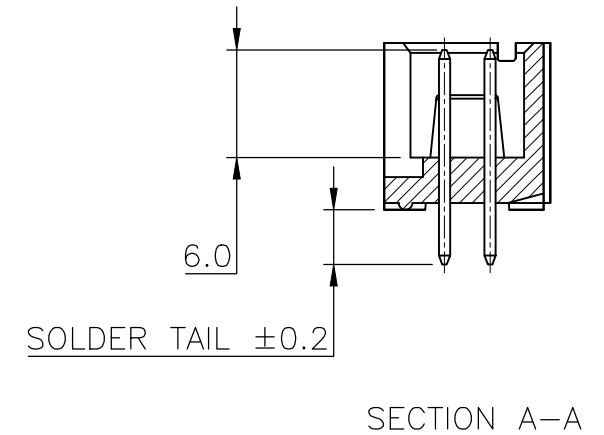
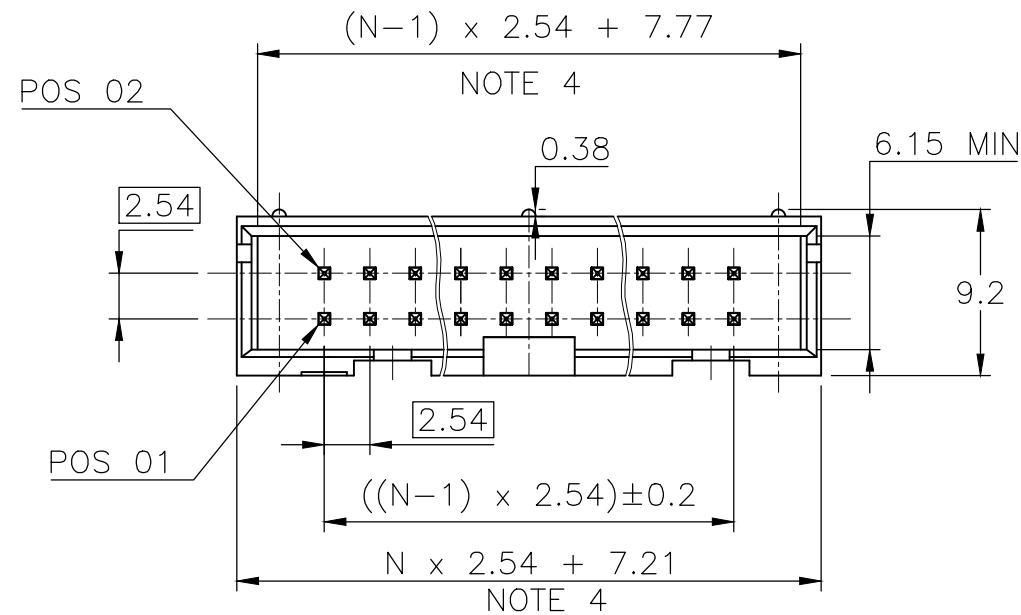
RoHS COMPATIBLE, SEE NOTE 5

PIN STYLE, SEE SHEET 2 & 3.

PLATING SEE SHEET 2 & 3.

NOTES:

- 1 - HOUSING MAT'L : GLASS FILLED THERMOPLASTIC. UL94V-0 COLOR: BLUE PART MEETS WITH GWT (725°C;960°C)
- 2 - PIN MATERIAL : PHOSPHOR BRONZE
- 3 - PACKAGING :
POLYBAGS FROM 2X02 TO 2X04 POSITIONS
TUBE FROM 2X05 TO 2X32 POSITIONS
- 4 - TO DETERMINE DIMENSIONS :
N = NUMBER OF POSITIONS PER ROW
EXAMPLE : 8 POS N x 2.54 = 20.32mm
- 5 - RoHS COMPATIBLE PRODUCT SPECIFICATIONS
 - a - PLATING:
- "LF" MEANS THE PRODUCT IS LEAD-FREE, 2µm MINIMUM MATTE TIN OVER 1.27µm MINIMUM NICKEL UNDERPLATE.
 - b - MANUFACTURING PROCESS COMPATIBILITY
- THE HOUSING WILL WITHSTAND EXPOSURE TO 260°C ±5°C SOLDER BATH TEMPERATURE FOR 5 SECONDS IN A WAVE SOLDER APPLICATION WITH A 1.6mm MIN THICK CIRCUIT BOARD.
 - c - LABELLING:
- MEETS PACKAGING SPECS AS PER GS-14-920
 - d - LEGAL STATEMENT: SEE GS-47-0004



| | | | | | | | |
|--------------------------|----------------|------|----------|---------------------------------------|-------------------------------|--------------------------|--------------------------------------|
| mat'l. code SEE NOTES | | | | surface ISO 1302 | tolerance ISO 406 ISO 1101 | projection mm | product family QUICKIE |
| ltr | ecn no | dr | date | tolerances unless otherwise specified | | scale 2.5:1 | title SHR.LP.HEADER STR DR TMT |
| BK | F12-0086 | JCO | 12.07.17 | angles | .X ±0.3 | | |
| BL | F12-0805 | LMU | 12.10.25 | linear | .XX ±0.13 | FCJ | sheet 1 of 3 75869 |
| BM | B-18120 | LMU | 14.07.10 | | .XXX ±0.05 | | |
| BN | B-19070 | LMU | 14.10.15 | dr | D.LE 01.01.24 | type CUSTOMER Drawing | size A3 |
| BP | B-19091 | LMU | 14.10.16 | enr | JM.C 01.01.24 | | |
| BR | B-20087 | AMA | 15.01.26 | chr | JF.N 01.01.24 | | |
| | | | | appd | JM.C 01.01.24 | | |
| sheet index | revision sheet | BR 1 | BE 2 | K 3 | | | |

STANDARD APPLICATION

| PIN STYLE | NUMBER OF POSITIONS | SOLDER TAIL REF | LEFT POLARIZATION | RIGHT POLARIZATION |
|-----------|---------------------|-----------------|-------------------|--------------------|
| 30 | 2 x 2 | 3.05 | NO | NO |
| 31 | 2 x 3 | 3.05 | NO | NO |
| 32 | 2 x 4 | 3.05 | NO | NO |
| 01 | 2 x 5 | 3.05 | NO | YES |
| 02 | 2 x 7 | 3.05 | NO | YES |
| 03 | 2 x 8 | 3.05 | YES | YES |
| 04 | 2 x 10 | 3.05 | YES | YES |
| 05 | 2 x 13 | 3.05 | YES | YES |
| 33 | 2 x 15 | 3.05 | YES | YES |
| 06 | 2 x 17 | 3.05 | YES | YES |
| 07 | 2 x 20 | 3.05 | YES | YES |
| 08 | 2 x 25 | 3.05 | YES | YES |
| 09 | 2 x 30 | 3.05 | YES | YES |
| 10 | 2 x 32 | 3.05 | YES | YES |

PLATING :

- 1 = 0.76µm GOLD/GXT
(PdNi WITH GOLD FLASH) ON CONTACT AREA
2µm MIN MATTE TIN ON TAIL
- 2 = 2µm TIN MIN FULL PLATED
- 3 = 0.38µm GOLD/GXT
(PdNi WITH GOLD FLASH) ON CONTACT AREA
2µm MIN MATTE TIN ON TAIL

UNDERPLATE : 1.27µm Ni MIN



Copyright FCI

| | | | | | | | | | |
|-------------|----------------|------------|----------|---------------------------------------|--------|------------|--------|----------------|-------------------|
| mat'l. code | | surface | | tolerance | | projection | | product family | |
| | | ISO 1302 ✓ | | ISO 406 ISO 1101 | | | | QUICKIE | |
| ltr | ecn no | dr | date | tolerances unless otherwise specified | | | | title | |
| BC | F08-0137 | LMU | 08.03.10 | angles | linear | | | SHR.LP.HEADER | |
| BD | F08-0146 | YOV | 08.04.11 | | | scale N/A | | STR DR TMT | |
| BE | B-19091 | LMU | 14.10.16 | dr | D.LE | 01.01.24 | dwg no | | sheet 2 of - size |
| AY | F04-0389 | JCO | 04.12.22 | enrg | JM.C | 01.01.24 | 75869 | | A3 |
| BA | F06-0229 | LMU | 06.07.18 | chr | JF.N | 01.01.24 | type | | CUSTOMER Drawing |
| BB | F07-0198 | LMU | 07.05.30 | appd | JM.C | 01.01.24 | | | |
| sheet index | revision sheet | | | | | | | | |

APPLICATION SPECIFIC

| PIN STYLE | NUMBER OF POSITIONS | SOLDER TAIL REF | PIN MISSING | LEFT POLARIZATION | RIGHT POLARIZATION |
|-----------|---------------------|-----------------|--------------|-------------------|--------------------|
| 65 | 2x02 | 4.10 | | NO | NO |
| 44 | 2x03 | 3.05 | PIN 2 | NO | NO |
| 40 | 2x03 | 3.05 | PIN 6 | NO | NO |
| 51 | 2x03 | 7.60 | | NO | NO |
| 41 | 2x04 | 3.05 | PIN 1 | NO | NO |
| 55 | 2x04 | 3.05 | PIN 8 | NO | NO |
| 64 | 2x04 | 4.10 | | NO | YES |
| 59 | 2x05 | 3.05 | PIN 1,2,9,10 | NO | YES |
| 60 | 2x05 | 3.05 | PIN 9 | NO | YES |
| 37 | 2x07 | 3.05 | PIN 1 | NO | YES |
| 13 | 2x07 | 3.05 | PIN 5 | NO | YES |
| 46 | 2x07 | 3.05 | PIN 6 | NO | YES |
| 12 | 2x07 | 3.05 | PIN 7 | NO | YES |
| 57 | 2x07 | 3.05 | PIN 12 | NO | YES |
| 11 | 2x07 | 3.05 | PIN 13 | NO | YES |
| 56 | 2x07 | 3.05 | PIN 14 | NO | YES |
| 43 | 2x08 | 3.05 | PIN 6 & 7 | YES | YES |
| 38 | 2x10 | 3.05 | PIN 2 | YES | YES |
| 34 | 2x10 | 3.05 | PIN 15 | YES | YES |
| 58 | 2x10 | 3.05 | PIN 18 | YES | YES |
| 63 | 2x10 | 7.60 | | YES | YES |
| 35 | 2x13 | 3.05 | PIN 26 | YES | YES |
| 25 | 2x13 | 7.60 | | YES | YES |
| 54 | 2x15 | 7.60 | | YES | YES |
| 19 | 2x15 | 4.10 | | YES | YES |
| 17 | 2x17 | 3.05 | PIN 3 | YES | YES |
| 39 | 2x17 | 3.05 | PIN 5 | YES | YES |
| 26 | 2x17 | 7.60 | | YES | YES |
| 15 | 2x20 | 3.05 | PIN 8 | YES | YES |
| 16 | 2x20 | 3.05 | PIN 17 | YES | YES |
| 18 | 2x20 | 3.05 | PIN 20 | YES | YES |
| 36 | 2x20 | 3.05 | PIN 37 | YES | YES |
| 45 | 2x20 | 3.05 | PIN 25,27,28 | YES | YES |
| 27 | 2x20 | 7.60 | | YES | YES |
| 42 | 2x25 | 3.05 | PIN 25 | YES | YES |
| 28 | 2x25 | 7.60 | | YES | YES |
| 62 | 2x25 | 4.10 | | YES | YES |



PLATING :

- 1 = 0.76µm GOLD/GXT
(PdNi WITH GOLD FLASH) ON CONTACT AREA
2µm MIN MATTE TIN ON TAIL
- 2 = 2µm TIN MIN FULL PLATED
- 3 = 0.38µm GOLD/GXT
(PdNi WITH GOLD FLASH) ON CONTACT AREA
2µm MIN MATTE TIN ON TAIL

UNDERPLATE : 1.27µm Ni MIN



Copyright FCI

| | | | | | | | | | |
|-------------|--|--|--|--|--|-------------|--|-----------------------------|--|
| mat'l. code | | surface | | tolerance | | projection | | product family | |
| | | ISO 1302 <input checked="" type="checkbox"/> | | ISO 406 <input type="checkbox"/> ISO 1101 <input type="checkbox"/> | | | | QUICKIE | |
| ltr | | ecn no | | dr | | date | | title | |
| H | | B-18120 | | LMU | | 14.07.10 | | SHR.LP.HEADER STR DR TMT | |
| J | | B-19091 | | LMU | | 14.10.16 | | | |
| K | | B-20087 | | AMA | | 15.01.26 | | | |
| | | | | dr | | MULIN.L | | scale N/A | |
| E | | F08-0146 | | YOV | | 08.04.11 | | dwg no | |
| F | | F10-0217 | | LMU | | 10.09.16 | | sheet 3 of - size | |
| G | | F12-0086 | | JCO | | 12.07.17 | | 75869 A3 | |
| | | | | enr | | COMPAGNON.J | | type | |
| | | | | chr | | NOTTEAU.JF | | CUSTOMER Drawing | |
| | | | | appd | | JM.C | | | |
| sheet | | revision | | | | | | | |
| index | | sheet | | | | | | | |

Mouser Electronics

Authorized Distributor

Click to View Pricing, Inventory, Delivery & Lifecycle Information:

[FCI / Amphenol:](#)

[75869-101LF](#) [75869-105LF](#) [75869-108](#) [75869-131LF](#) [75869-107LF](#) [75869-106](#) [75869-130](#) [75869-133](#) [75869-203](#)
[75869-331](#) [75869-131](#) [75869-103](#) [75869-210LF](#) [75869-330LF](#) [75869-132LF](#) [75869-102LF](#) [75869-106LF](#) [75869-](#)
[110LF](#) [75869-130LF](#) [75869-201LF](#) [75869-202LF](#) [75869-203LF](#) [75869-204LF](#) [75869-207LF](#) [75869-208LF](#) [75869-](#)
[230LF](#) [75869-231LF](#) [75869-301LF](#) [75869-302LF](#) [75869-303LF](#) [75869-304LF](#) [75869-307LF](#) [75869-308LF](#) [75869-](#)
[309LF](#) [75869-310LF](#) [75869-331LF](#) [75869-332LF](#) [75869-101](#) [75869-102](#) [75869-132](#)