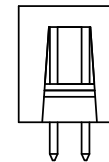
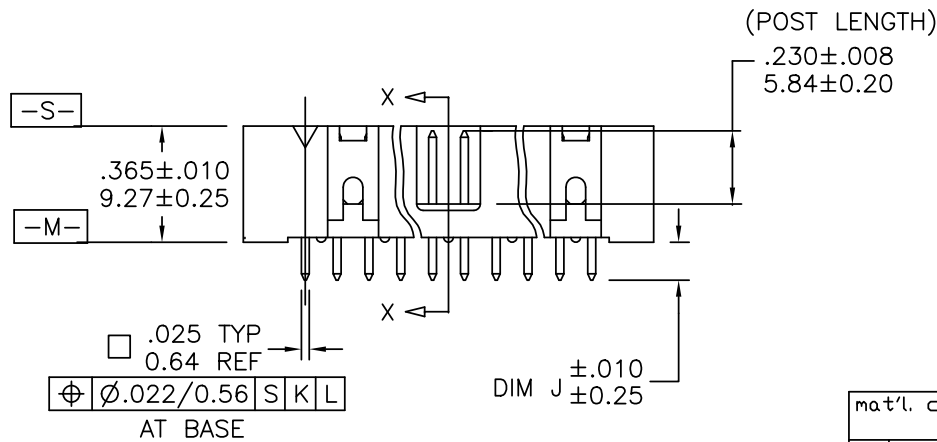
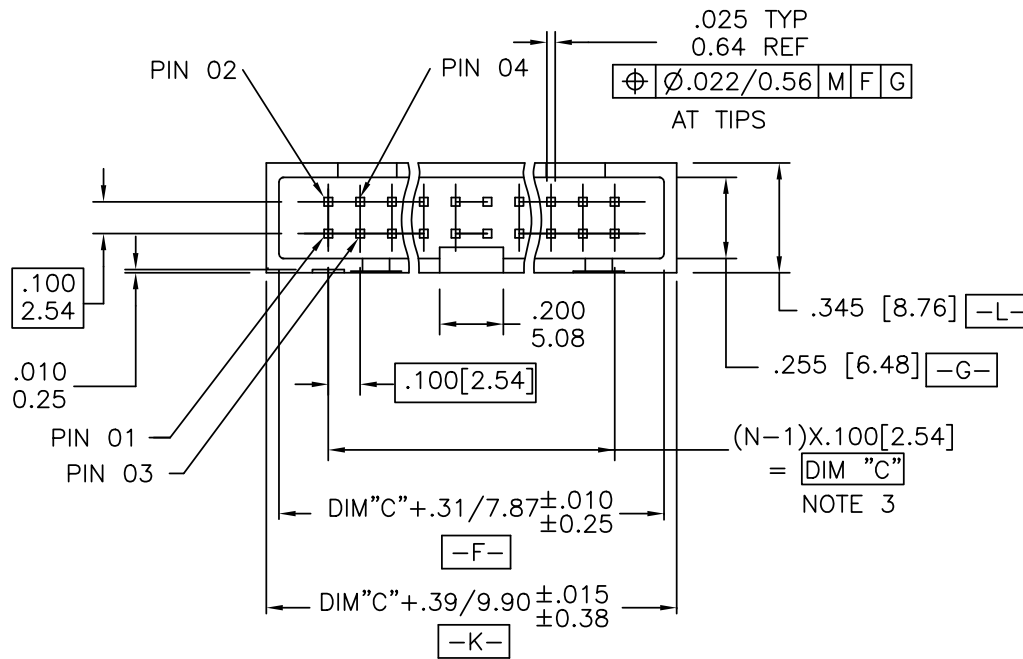


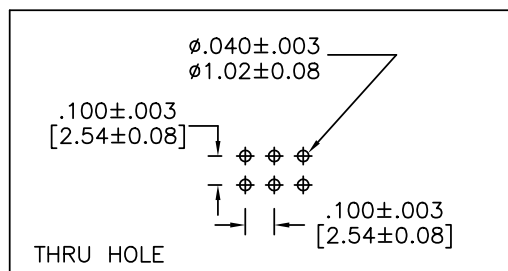
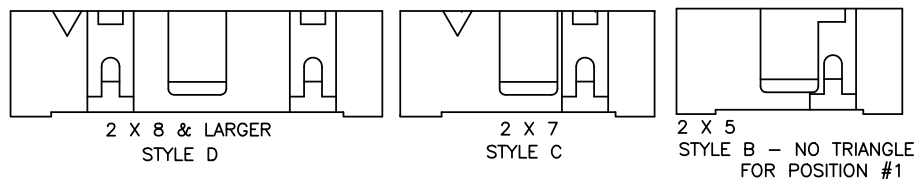
PRODUCT NUMBER
SEE TABLE



| | | | | | |
|--------------|------------|------------------|------------|---------------------------------------|----------------|
| mat'l. code | | surface | tolerance | projection | product family |
| ISO 1302 | | ISO 1302 | ISO 406 | ISO 1101 | QUICKIE |
| ltr | ecr | ndr | date | tolerances unless otherwise specified | title |
| AD | V42013 | LSS | 1/25/95 | angles | linear |
| AE | V50332 | MRC | 5/25/95 | linear | linear |
| AF | N05-0060 | ERE | 8/08/05 | ±2' | linear |
| AG | M06-0282 | AGS | 7/22/06 | dr | L. SANDERS |
| AH | M07-0363 | MHT | 8/17/07 | enr | M. SMYK |
| AJ | N08-0138 | R.B | 07/08/08 | chr | J. ROMBERGER |
| AK | N12-012093 | J.Z | 2012-07-04 | app | M. SMYK |
| sheet | revis | AK | AK | AK | AK |
| index | sheet | 1 | 2 | 3 | 4 |
| PDS: Rev :AK | | STATUS: Released | | Printed: Jul 10, 2012 | |

PRODUCT NUMBER
SEE TABLE

HEADER STYLE



RECOMMENDED BOARD LAYOUT

NOTES:

1. SAME POSITION TOLERANCE APPLIES TO BOTH ENDS OF PINS.
2. MOLDING MATERIAL: GLASS-FILLED POLYESTER, FLAME RETARDANT PER UL 94 V-0, COLOR: BLACK.
3. 1° MAX. DRAFT PERMISSIBLE ON ALL SURFACES.
4. 3 LBS./1.36 KG MIN. TERMINAL PULL-OUT FORCE.
5. TERMINAL MATERIAL: PHOSPHORUS BRONZE.
6. TO DETERMINE DIMENSIONS:
N = NUMBER OF POSITIONS PER ROW
7. UNDER PLATING: 50μ"/1.27μm Ni.
8. PART NUMBERS WITH "R" FOLLOWING THE PART NUMBER (EXAMPLE 66506-326 R) HAS RETENTION. (ONLY PARTS WITH .105, .120, AND .150 ROUND OR SQUARE TAILS CAN HAVE RETENTION.) LOCATION IS MANUFACTURER'S OPTION.
FOR CONNECTORS:
RETENTIVE LEG APPLICABLE TO TAIL LENGTHS .125/3.18 MAX. 5LB/2.3KG MAX INSERTION FORCE AND .25LB./1KG MIN RETENTION FORCE PER RETENTIVE PIN USING .062/1.57 THICK CIRCUIT BOARD AND RECOMMENDED HOLE PATTERN. RETENTIVE LOCATION AT THE DISCRETION OF THE MANUFACTURER. RETENTION PIN MAY BE SHIFTED TO NEXT POSITION.
9. PART NUMBERS WITH "T" FOLLOWING PART NUMBER (EXAMPLE 66506-068 T IS PACKED IN TUBES.) (CALL PRODUCT MANAGER FOR AVAILABILITY.)
10. SEE 68751 FOR LATCHES.
11. MAY BE ORDERED WITH "G" PACK PACKAGING BY ADDING "G" TO DASH NUMBER.
12. ADD "LF" SUFFIX AT THE END OF PART NUMBER FOR LEAD FREE OPTION & PART NUMBERS WITH "LF" SUFFIX ADDED IN THE TABLE ARE LEAD FREE.
13. IF "LF" P/N THE PRODUCT MEETS EUROPEAN UNION DIRECTIVES AND OTHER COUNTRY REGULATION AS DESCRIBED IN GS-22-008.
14. THE HOUSING WILL WITHSTAND EXPOSURE TO 260°C PEAK TEMPERATURE FOR 15 SECONDS IN A WAVE SOLDER APPLICATION WITH A 1.57mm MINIMUM THICK CIRCUIT BOARD. SEE APPLICATION NOTES/PROCEDURES IF THEY ARE AVAILABLE.
15. "THIS PRODUCT HAS 100% TIN PLATING IN THE INTERFACE AND HAS NOT BEEN TESTED FOR WHISKER GROWTH IN ALL INTERCONNECT ENVIRONMENTS."
16. PLATING OPTIONS:
PERFORMANCE PLATING WILL BE EITHER GOLD OR GXT ON CONTACT OR TAIL, OPTIONALLY TIN ON TAIL.

| | | | | | | |
|-------------|----------|----------|--------------|------------|----------------|---------------------------------------|
| mat'l. code | | surface | tolerance | projection | product family | |
| | | ISO 1302 | ISO 406 | | QUICKIE | |
| | | | ISO 1101 | | | |
| l | tr | ec | n | d | date | tolerances unless otherwise specified |
| AK | | | | angles | linear | XXX±.01/XXX±.03 |
| | | | | | | XXX±.005/XXX±.013 |
| | | | | ±2° | | XXXX±.0020/XXXX±.0051 |
| | | dr | L. SANDERS | 1/25/95 | | |
| | | engr | M. SMYK | 1/25/95 | | |
| | | chr | J. ROMBERGER | 1/25/95 | | |
| | | appd | M. SMYK | 1/25/95 | | |
| sheet | revision | | | | | |
| index | sheet | | | | | |

D

Copyright FCI

D

1

2 3

4

5

6

| PRODUCT NUMBER NOTE 8,9 & 12 | SIZE | STYLE | DIM C | DIM J | PIN PLATING | PLASTIC MATERIAL |
|---------------------------------|--------|-------|-------------|------------|---|------------------|
| 66506 -049 | 2 X 5 | B | .400/10.16 | .150/3.81 | 30u"/0.76u MIN (NOTE 16) OVER 50u"/1.27u Ni | NOTE 2 |
| -050 | 2 X 10 | D | .900/22.86 | | | |
| -051 | 2 X 13 | | 1.200/30.48 | | | |
| -052 | 2 X 17 | | 1.600/40.64 | | | |
| -053 | 2 X 20 | | 1.900/48.26 | | | |
| -054 | 2 X 25 | D | 2.400/60.96 | | | |
| -055 | 2 X 7 | C | .600/15.24 | | | |
| -056 | 2 X 8 | D | .700/17.78 | .150/3.81 | 30u"/0.76u MIN (NOTE 16) OVER 50u"/1.27u Ni | |
| -057 | 2 X 30 | | 2.900/73.66 | .105/2.67 | 30u"/0.76u MIN (NOTE 16) OVER 50u"/1.27u Ni | |
| -058 | | | | .150/3.81 | 30u"/0.76u MIN (NOTE 16) OVER 50u"/1.27u Ni | |
| -059 | | | | .675/17.15 | 30u"/0.76u MIN (NOTE 16) OVER 50u"/1.27u Ni | |
| -060 | | | | .105/2.67 | 120/200u" TIN LEAD | |
| -060LF | | | | .105/2.67 | 100/160u" TIN | |
| -061 | | | | .150/3.81 | 120/200u" TIN LEAD | |
| -061LF | | | | .150/3.81 | 100/160u" TIN | |
| -062 | | | | .675/17.15 | 120/200u" TIN LEAD | |
| -062LF | | | | .675/17.15 | 100/160u" TIN | |
| -063 | | | | .105/2.67 | 30u"/0.76u MIN (NOTE 16) OVER 50u"/1.27u Ni | |
| -064 | | | | .150/3.81 | | |
| -065 | 2 X 30 | D | 2.900/73.66 | .675/17.15 | | |
| -066 | 2 X 5 | B | .400/10.16 | .105/2.67 | | |
| -067 | 2 X 5 | B | .400/10.16 | .675/17.15 | | |
| -068 | 2 X 7 | C | .600/15.24 | .105/2.67 | | |
| -069 | 2 X 7 | C | .600/15.24 | .675/17.15 | | |
| -070 | 2 X 8 | D | .700/17.78 | .105/2.67 | 30u"/0.76u MIN (NOTE 16) OVER 50u"/1.27u Ni | |
| -071 | 2 X 8 | D | .700/17.78 | .675/17.15 | 30u"/0.76u MIN (NOTE 16) OVER 50u"/1.27u Ni | |
| -072 | 2 X 10 | | .900/22.86 | .105/2.67 | | |
| -073 | 2 X 10 | | .900/22.86 | .675/17.15 | | |
| -074 | 2 X 13 | | 1.200/30.48 | .105/2.67 | | |
| -075 | 2 X 13 | | 1.200/30.48 | .675/17.15 | | |
| -076 | 2 X 17 | | 1.600/40.64 | .105/2.67 | | |
| -077 | 2 X 17 | | 1.600/40.64 | .675/17.15 | | |
| -078 | 2 X 20 | | 1.900/48.26 | .105/2.67 | | |
| -079 | 2 X 20 | | 1.900/48.26 | .675/17.15 | | |
| -080 | 2 X 25 | | 2.400/60.96 | .105/2.67 | | |
| 66506 -081 | 2 X 25 | D | 2.400/60.96 | .675/17.15 | 30u"/0.76u MIN (NOTE 16) OVER 50u"/1.27u Ni | NOTE 2 |

A

B

C

D

A

B

C

D



FCIconnect.com

Copyright FCI

| | | | | | | | | | |
|-------------------|--|---------------------------------------|--|----------------------------------|--|------------------------|--|--|--|
| mat'l. code | | surface ISO 1302 ✓ | | tolerance ISO 406 ISO 1101 | | projection ISO 1000 | | product family QUICKIE | |
| ltr ecn nodr date | | tolerances unless otherwise specified | | linear | | INCH/MM | | title HEADER QUICKIE SLIM LINE VERTICAL 4 WALL | |
| AK | | angles | | XXX±.01/XXX±.03 | | scale 1:1 | | dwg no 66506 | |
| | | ±2" | | XXX±.005/XXX±.013 | | FCI | | shee 5 of 10 size A3 | |
| | | dir L. SANDERS | | 1/25/95 | | | | type Product Customer Drawing | |
| | | engr M. SMYK | | 1/25/95 | | | | | |
| | | chr J. ROMBERGER | | 1/25/95 | | | | | |
| | | appd M. SMYK | | 1/25/95 | | | | | |
| sheet index | | revision sheet | | | | | | | |



FCIconnect.com

Copyright FCI

| PRODUCT NUMBER NOTE 8,9 & 12 | SIZE | STYLE | DIM C | DIM J | PIN PLATING | PLASTIC MATERIAL |
|---------------------------------|--------|-------|-------------|------------|---|------------------|
| 66506-082 | 2 X 5 | B | .400/10.16 | .105/2.67 | 15u"/0.38u MIN (NOTE 16) OVER 50u"/1.27u Ni | NOTE 2 |
| -083 | 2 X 5 | B | .400/10.16 | .150/3.81 | | |
| -084 | 2 X 5 | B | .400/10.16 | .675/17.15 | | |
| -085 | 2 X 7 | C | .600/15.24 | .105/2.67 | | |
| -086 | 2 X 7 | C | .600/15.24 | .150/3.81 | | |
| -087 | 2 X 7 | C | .600/15.24 | .675/17.15 | | |
| -088 | 2 X 8 | D | .700/17.78 | .105/2.67 | | |
| -089 | 2 X 8 | | .700/17.78 | .150/3.81 | | |
| -090 | 2 X 8 | | .700/17.78 | .675/17.15 | | |
| -091 | 2 X 10 | | .900/22.86 | .105/2.67 | | |
| -092 | 2 X 10 | | .900/22.86 | .150/3.81 | | |
| -093 | 2 X 10 | | .900/22.86 | .675/17.15 | | |
| -094 | 2 X 13 | | 1.200/30.48 | .105/2.67 | | |
| -095 | 2 X 13 | | 1.200/30.48 | .150/3.81 | | |
| -096 | 2 X 13 | | 1.200/30.48 | .675/17.15 | | |
| -097 | 2 X 17 | | 1.600/40.64 | .105/2.67 | | |
| -098 | 2 X 17 | | 1.600/40.64 | .150/3.81 | | |
| -099 | 2 X 17 | | 1.600/40.64 | .675/17.15 | | |
| -100 | 2 X 20 | | 1.900/48.26 | .105/2.67 | | |
| -101 | 2 X 20 | | 1.900/48.26 | .150/3.81 | | |
| -102 | 2 X 20 | | 1.900/48.26 | .675/17.15 | | |
| -103 | 2 X 25 | | 2.400/60.96 | .105/2.67 | | |
| -104 | 2 X 25 | | 2.400/60.96 | .150/3.81 | | |
| -105 | 2 X 25 | D | 2.400/60.96 | .675/17.15 | 15u"/0.38u MIN (NOTE 16) OVER 50u"/1.27u Ni | |
| -106 | 2 X 30 | D | 2.900/73.66 | .105/2.67 | 15u"/0.38u MIN (NOTE 16) OVER 50u"/1.27u Ni | |
| -107 | 2 X 30 | D | 2.900/73.66 | .150/3.81 | 15u"/0.38u MIN (NOTE 16) OVER 50u"/1.27u Ni | |
| -108 | 2 X 30 | D | 2.900/73.66 | .675/17.15 | 15u"/0.38u MIN (NOTE 16) OVER 50u"/1.27u Ni | |
| -109 | 2 X 5 | B | .400/10.16 | .105/2.67 | 30u"/0.76u MIN (NOTE 16) OVER 50u"/1.27u Ni | |
| -110 | | | | .150/3.81 | 30u"/0.76u MIN (NOTE 16) OVER 50u"/1.27u Ni | |
| -111 | | | | .675/17.15 | 30u"/0.76u MIN (NOTE 16) OVER 50u"/1.27u Ni | |
| -112 | | | | .105/2.67 | 120/200u" TIN LEAD | |
| -112LF | | | | .105/2.67 | 100/160u" TIN | |
| -113 | | | | .150/3.81 | 120/200u" TIN LEAD | |
| -113LF | | | | .150/3.81 | 100/160u" TIN | |
| -114 | | | | .675/17.15 | 120/200u" TIN LEAD | |
| 66506-114LF | 2 X 5 | B | .400/10.16 | .675/17.15 | 100/160u" TIN | NOTE 2 |

| | | | | | | | | | |
|-------------------|--|---------------------------------------|--|----------------------------------|--|----------------|--|-------------------------------|--|
| mat'l. code | | surface ISO 1302 ✓ | | tolerance ISO 406 ISO 1101 | | projection | | product family QUICKIE | |
| ltr ecn nopr date | | tolerances unless otherwise specified | | linear | | INCH/MM | | title | |
| AK | | angles | | XXX±.01/XXX±.03 | | | | HEADER QUICKIE SLIM LINE | |
| | | ±2° | | XXX±.005/XXX±.013 | | | | VERTICAL 4 WALL | |
| | | | | XXX±.0020/XXX±.0051 | | scale 1:1 | | dwg no | |
| | | dr | | L. SANDERS | | 1/25/95 | | sheet 6 of 10 | |
| | | engr | | M. SMYK | | 1/25/95 | | size | |
| | | chr | | J. ROMBERGER | | 1/25/95 | | 66506 | |
| | | appd | | M. SMYK | | 1/25/95 | | type Product Customer Drawing | |
| sheet index | | revision sheet | | | | | | | |



FCIconnect.com

Copyright FCI

| PRODUCT NUMBER NOTE 8,9 & 12 | SIZE | STYLE | DIM C | DIM J | PIN PLATING | PLASTIC MATERIAL |
|---------------------------------|--------------|-------|-------------|------------|---|------------------|
| 66506-115 | 2 X 5 | B | .400/10.16 | .105/2.67 | 15u"/0.38u MIN (NOTE 16) OVER 50u"/1.27u Ni | NOTE 2 |
| -116 | | | | .150/3.81 | 15u"/0.38u MIN (NOTE 16) OVER 50u"/1.27u Ni | |
| -117 | | | | .675/17.15 | 15u"/0.38u MIN (NOTE 16) OVER 50u"/1.27u Ni | |
| -118 | | | | .105/2.67 | 30u"/0.76u MIN (NOTE 16) OVER 50u"/1.27u Ni | |
| -119 | | | | .150/3.81 | 30u"/0.76u MIN (NOTE 16) OVER 50u"/1.27u Ni | |
| -120 | 2 X 5 | B | .400/10.16 | .675/17.15 | 30u"/0.76u MIN (NOTE 16) OVER 50u"/1.27u Ni | NOTE 2 |
| -121 | DISCONTINUED | | | | | |
| THRU | | | | | | |
| -216 | | | | | | |
| -217 | 2 X 12 | D | 1.100/27.94 | .105/2.67 | 15u"/0.38u MIN (NOTE 16) OVER 50u"/1.27u Ni | NOTE 2 |
| -218 | | | | | 30u"/0.76u MIN (NOTE 16) OVER 50u"/1.27u Ni | |
| -219 | | | | | 30u"/0.76u MIN (NOTE 16) OVER 50u"/1.27u Ni | |
| -220 | | | | .105/2.67 | 120/200u" TIN LEAD | |
| -220LF | | | | .105/2.67 | 100/160u" TIN | |
| -221 | | | | .150/3.81 | 15u"/0.38u MIN (NOTE 16) OVER 50u"/1.27u Ni | |
| -222 | | | | | 30u"/0.76u MIN (NOTE 16) OVER 50u"/1.27u Ni | |
| -223 | | | | | 30u"/0.76u MIN (NOTE 16) OVER 50u"/1.27u Ni | |
| -224 | | | | .150/3.81 | 120/200u" TIN LEAD | |
| -224LF | | | | .150/3.81 | 100/160u" TIN | |
| -225 | | | | .675/17.15 | 15u"/0.38u MIN (NOTE 16) OVER 50u"/1.27u Ni | |
| -226 | | | | | 30u"/0.76u MIN (NOTE 16) OVER 50u"/1.27u Ni | |
| -227 | | | | | 30u"/0.76u MIN (NOTE 16) OVER 50u"/1.27u Ni | |
| -228 | | | | | 120/200u" TIN LEAD | |
| -228 | 2 X 12 | | 1.100/27.94 | .675/17.15 | 100/160u" TIN | |
| -229 | 2 X 15 | | 1.400/35.56 | .105/2.67 | 15u"/0.38u MIN (NOTE 16) OVER 50u"/1.27u Ni | |
| -230 | | | | | 30u"/0.76u MIN (NOTE 16) OVER 50u"/1.27u Ni | |
| -231 | | | | | 30u"/0.76u MIN (NOTE 16) OVER 50u"/1.27u Ni | |
| -232 | | | | .105/2.67 | 120/200u" TIN LEAD | |
| -232LF | | | | .105/2.67 | 100/160u" TIN | |
| -233 | 2 X 15 | D | 1.400/35.56 | .150/3.81 | 15u"/0.38u MIN (NOTE 16) OVER 50u"/1.27u Ni | |
| -234 | 2 X 15 | D | 1.400/35.56 | .150/3.81 | 30u"/0.76u MIN (NOTE 16) OVER 50u"/1.27u Ni | |
| -235 | | | | .150/3.81 | 30u"/0.76u MIN (NOTE 16) OVER 50u"/1.27u Ni | |
| -236 | | | | .150/3.81 | 120/200u" TIN LEAD | |
| -236LF | | | | .150/3.81 | 100/160u" TIN | |
| 66506-237 | 2 X 15 | D | 1.400/35.56 | .675/17.15 | 15u"/0.38u MIN (NOTE 16) OVER 50u"/1.27u Ni | NOTE 2 |

| | | | | | | | | | |
|-------------------|--|---------------------------------------|--|---|--|----------------|--|---|--|
| mat'l. code | | surface ISO 1302 ✓ | | tolerance ISO 406 ISO 1101 | | projection | | product family QUICKIE | |
| ltr ecn nodr date | | tolerances unless otherwise specified | | title | | title | | | |
| AJ | | angles linear | | XXX-01/XXX-03 XXX-005/XXX-013 XXX-0020/XXX-0051 | | INCH/MM | | HEADER QUICKIE SLIM LINE VERTICAL 4 WALL | |
| | | ±2" | | scale 1:1 | | FCCI | | dwg no 66506 | |
| | | dir L. SANDERS | | 1/25/95 | | | | shee 7 of 10 size A3 | |
| | | engr M. SMYK | | 1/25/95 | | | | | |
| | | chr J. ROMBERGER | | 1/25/95 | | | | | |
| | | appd M. SMYK | | 1/25/95 | | | | type Product Customer Drawing | |
| sheet index | | revision sheet | | | | | | | |

1

2

3

4

5

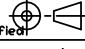
6

| PRODUCT NUMBER NOTE 8,9 & 12 | SIZE | STYLE | DIM C | DIM J | PIN PLATING | PLASTIC MATERIAL |
|---------------------------------|-------------|-------|-------------|------------|---|------------------|
| 66506-238 | 2 X 5 | B | .400/10.16 | .675/17.15 | 30u"/0.76u MIN (NOTE 16) OVER 50u"/1.27u Ni | NOTE 2 |
| -239 | | | | | 30u"/0.76u MIN (NOTE 16) OVER 50u"/1.27u Ni | |
| -240 | | | | | 120/200u" TIN LEAD | |
| -240LF | 2 X 15 | | 1.400/35.56 | .675/17.15 | 100/160u" TIN | |
| -241 | 2 X 22 | | 2.100/53.34 | .105/2.67 | 15u"/0.38u MIN (NOTE 16) OVER 50u"/1.27u Ni | |
| -242 | | | | | 30u"/0.76u MIN (NOTE 16) OVER 50u"/1.27u Ni | |
| -243 | | | | | 30u"/0.76u MIN (NOTE 16) OVER 50u"/1.27u Ni | |
| -244 | | | | .105/2.67 | 120/200u" TIN LEAD | |
| -244LF | | | | .105/2.67 | 100/160u" TIN | |
| -245 | | | | .150/3.81 | 15u"/0.38u MIN (NOTE 16) OVER 50u"/1.27u Ni | |
| -246 | | | | | 30u"/0.76u MIN (NOTE 16) OVER 50u"/1.27u Ni | |
| -247 | | | | | 30u"/0.76u MIN (NOTE 16) OVER 50u"/1.27u Ni | |
| -248 | | | | .150/3.81 | 120/200u" TIN LEAD | |
| -248LF | | | | .150/3.81 | 100/160u" TIN | |
| -249 | | | | .675/17.15 | 15u"/0.38u MIN (NOTE 16) OVER 50u"/1.27u Ni | |
| -250 | | | | | 30u"/0.76u MIN (NOTE 16) OVER 50u"/1.27u Ni | |
| -251 | | | | | 30u"/0.76u MIN (NOTE 16) OVER 50u"/1.27u Ni | |
| -252 | 2 X 22 | | 2.100/53.34 | .675/17.15 | 120/200u" TIN LEAD | |
| 66506-252LF | 2 X 22 | | 2.100/53.34 | .675/17.15 | 100/160u" TIN | |
| 66506-253 | 2 X 17 | D | 1.600/40.64 | .105/2.67 | 15u"/0.38u MIN (NOTE 16) OVER 50u"/1.27u Ni | NOTE 2 |
| 66506-254 | UNAVAILABLE | | | | | |
| THRU | | | | | | |
| 66506-279 | | | | | | |
| 66506-280 | 2 X 10 | D | .900/22.86 | .105/2.67 | 120/200u" TIN LEAD | NOTE 2 |
| 66506-280LF | 2 X 10 | D | .900/22.86 | .105/2.67 | 100/160u" TIN | NOTE 2 |
| 66506-281 | UNAVAILABLE | | | | | |
| THRU | | | | | | |
| 66506-306 | | | | | | |
| 66506-307 | 2 X 5 | B | .400/10.16 | .097/2.46 | 30u"/0.76u MIN (NOTE 16) OVER 50u"/1.27u Ni | NOTE 2 |
| -308 | 2 X 5 | B | .400/10.16 | | | |
| -309 | 2 X 7 | C | .600/15.24 | | | |
| -310 | 2 X 8 | D | .700/17.78 | | | |
| -311 | 2 X 10 | | .900/22.86 | | | |
| -312 | 2 X 12 | | 1.100/27.94 | | | |
| -66506-313 | 2 X 13 | D | 1.200/30.48 | .097/2.46 | 30u"/0.76u MIN (NOTE 16) OVER 50u"/1.27u Ni | NOTE 2 |

mat'l. code

surface
ISO 1302

tolerance
ISO 406
ISO 1101

projection


product family
QUICKIE

ltr ecn nodr date

tolerances unless otherwise specified

AK

angles

linear

±2"

dr L. SANDERS 1/25/95

engr M. SMYK 1/25/95

chr J. ROMBERGER 1/25/95

appd M. SMYK 1/25/95

sheet index

revision sheet

title
HEADER QUICKIE SLIM LINE
VERTICAL 4 WALL

INCH/MM

scale 1:1

FCI

dwg no 66506

shee 8 of 10

size A3

type Product Customer Drawing

Form: A3

1

2

3

4

5

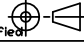
6

PDS: Rev :AK

STATUS: Released

Printed: Jul 10, 2012

| PRODUCT NUMBER NOTE 8,9 & 12 | SIZE | STYLE | DIM C | DIM J | PIN PLATING (NOTE 16) | PLASTIC MATERIAL NOTE 2 |
|---------------------------------|--------|-------|-------------|-----------|---|----------------------------|
| 66506-314 | 2 X 15 | D | 1.400/35.56 | .097/2.46 | 30u"/0.76u MIN (NOTE 16) OVER 50u"/1.27u Ni | |
| -315 | 2 X 17 | | 1.600/40.64 | | | |
| -316 | 2 X 20 | | 1.900/48.26 | | | |
| -317 | 2 X 22 | | 2.100/53.34 | | | |
| -318 | 2 X 25 | | 2.400/60.96 | | | |
| -319 | 2 X 30 | | 2.900/73.66 | .097/2.46 | 30u"/0.76u MIN (NOTE 16) OVER 50u"/1.27u Ni | |
| -320 | 2 X 8 | | .700/17.78 | .105/2.67 | 30u"/0.76u MIN (NOTE 16) OVER 50u"/1.27u Ni | |
| -321 | 2 X 25 | | 2.400/60.96 | | 30u"/0.76u MIN (NOTE 16) OVER 50u"/1.27u Ni | |
| -322 | 2 X 8 | | .700/17.78 | | 50u"/1.27u MIN (NOTE 16) OVER 50u"/1.27u Ni | |
| -323 | 2 X 17 | | 1.600/40.64 | .105/2.67 | 50u"/1.27u MIN (NOTE 16) OVER 50u"/1.27u Ni | |
| -324 | 2 X 25 | | 2.400/60.96 | .120/3.05 | 15u"/.38u MIN (NOTE 16) OVER 50u"/1.27u Ni | |
| -325 | 2 X 25 | | 2.400/60.96 | .150/3.81 | 30u"/0.76u MIN (NOTE 16) OVER 50u"/1.27u Ni | |
| -326 | 2 X 10 | | .900/22.86 | .120/3.05 | 15u"/.38u MIN (NOTE 16) OVER 50u"/1.27u Ni | |
| -327 | 2 X 17 | | 1.600/40.64 | .120/3.05 | 15u"/.38u MIN (NOTE 16) OVER 50u"/1.27u Ni | |
| -328 | 2 X 25 | | 2.400/60.96 | .120/3.05 | 15u"/.38u MIN (NOTE 16) OVER 50u"/1.27u Ni | |
| -329 | 2 X 13 | | 1.200/30.48 | .150/3.81 | 15u"/.38u MIN (NOTE 16) OVER 50u"/1.27u Ni | |
| -330 | 2 X 25 | | 2.400/60.96 | | 15u"/.38u MIN (NOTE 16) OVER 50u"/1.27u Ni | |
| -331 | 2 X 30 | | 2.900/73.66 | | 15u"/.38u MIN (NOTE 16) OVER 50u"/1.27u Ni | |
| -332 | 2 X 17 | | 1.600/40.64 | | 15u"/.38u MIN (NOTE 16) OVER 50u"/1.27u Ni | |
| -333 | 2 X 20 | | 1.900/48.26 | .150/3.81 | 30u"/0.76u MIN (NOTE 16) OVER 50u"/1.27u Ni | |
| -334 | 2 X 10 | | .900/22.86 | .105/2.67 | 15u"/.38u MIN (NOTE 16) OVER 50u"/1.27u Ni | |
| -335 | 2 X 20 | | 1.900/48.26 | .105/2.67 | 30u"/0.76u MIN (NOTE 16) OVER 50u"/1.27u Ni | |
| -336 | 2 X 22 | | 2.100/53.34 | .105/2.67 | 30u"/0.76u MIN (NOTE 16) OVER 50u"/1.27u Ni | |
| -337 | 2 X 12 | D | 1.100/27.94 | .150/3.81 | 15u"/.38u MIN (NOTE 16) OVER 50u"/1.27u Ni | |
| -338 | 2 X 5 | B | .400/10.16 | .150/3.81 | 15u"/.38u MIN (NOTE 16) OVER 50u"/1.27u Ni | |
| -339 | 2 X 4 | B | .300/7.62 | .105/2.67 | 15u"/.38u MIN (NOTE 16) OVER 50u"/1.27u Ni | |
| 66506-340 | 2 X 10 | D | .900/22.86 | .150/3.81 | 30u"/0.76u MIN (NOTE 16) OVER 50u"/1.27u Ni | NOTE 2 |

| | | | | | | | | | |
|-------------------|--|---------------------------------------|--|---|--|---|--|--|--|
| mat'l. code | | surface ISO 1302 | | tolerance ISO 406 ISO 1101 | | projection  | | product family QUICKIE | |
| ltr ecn nodr date | | tolerances unless otherwise specified | | linear XXX.X/XXX.X XXX.X/XXX.X XXX.X/XXX.X | | INCH/MM | | title HEADER QUICKIE SLIM LINE VERTICAL 4 WALL | |
| AK | | angles ±2° | | scale 1:1 | | FCCI | | dwg no 66506 | |
| | | dir L. SANDERS 1/25/95 | | | | | | shee 9 of 10 size A3 | |
| | | enr M. SMYK 1/25/95 | | | | | | | |
| | | chr J. ROMBERGER 1/25/95 | | | | | | | |
| | | app M. SMYK 1/25/95 | | | | | | type Product Customer Drawing | |
| sheet index | | revision sheet | | | | | | | |

1

2 3

4

5

6

| PRODUCT NUMBER NOTE 8, 9 & 12 | SIZE | STYLE | DIM C | DIM J | PIN PLATING (NOTE 16) | PLASTIC MATERIAL |
|----------------------------------|---------------------|-------|-------------|-----------|--|---------------------|
| 66506-341 | 2 X 17 | D | 1.600/40.64 | .150/3.81 | 30u"/.76u MIN (NOTE 16) OVER 50u"/1.27u Ni | NOTE 2 |
| -342 | 2 X 10 | D | .900/22.86 | .150/3.81 | 15u"/.38u MIN (NOTE 16) OVER 50u"/1.27u Ni | NOTE 2 |
| -343 | 2 X 17 | D | 1.600/40.64 | .150/3.81 | 15u"/.38u MIN (NOTE 16) OVER 50u"/1.27u Ni | NOTE 2 |
| -344 | U N A S S I G N E D | | | | | |
| -345 | 2 X 20 | D | 1.900/48.26 | .120/3.05 | 15u"/.38u MIN (NOTE 16) OVER 50u"/1.27u Ni | NOTE 2 |
| -346 | U N A S S I G N E D | | | | | |
| -347 | U N A S S I G N E D | | | | | |
| -348 | 2 X 5 | B | .400/10.16 | .105/2.67 | 15u/.38u MIN (NOTE 16) OVER 50u"/1.27u Ni | NOTE 2 |
| -349 | 2 X 7 | C | .600/15.24 | | | |
| -350 | 2 X 8 | D | .700/17.78 | | | |
| -351 | 2 X 10 | | .900/22.86 | | | |
| -352 | 2 X 13 | | 1.200/30.48 | | | |
| -353 | 2 X 17 | | 1.600/40.64 | | | |
| -354 | 2 X 20 | | 1.900/48.26 | | | |
| -355 | 2 X 22 | | 2.100/53.34 | | | |
| -356 | 2 X 25 | | 2.400/60.96 | | | |
| -357 | 2 X 30 | | 2.900/73.66 | .105/2.67 | 15u/.38u MIN (NOTE 16) OVER 50u"/1.27u Ni | |
| -358 | 2 X 10 | | .900/22.86 | .150/3.81 | 30u"/.76u MIN (NOTE 16) OVER 50u"/1.27u Ni | |
| -359 | 2 X 17 | | 1.600/40.64 | .150/3.81 | 30u"/.76u MIN (NOTE 16) OVER 50u"/1.27u Ni | |
| -360 | 2 X 12 | D | 1.100/27.94 | .295/7.49 | 15u/.38u MIN (NOTE 16) OVER 50u"/1.27u Ni | |
| -361 | 2 X 5 | B | .400/10.16 | .105/2.67 | 15u/.38u MIN (NOTE 16) OVER 50u"/1.27u Ni | |
| -362 | 2 X 5 | B | .400/10.16 | .105/2.67 | 30u/.76u MIN (NOTE 16) OVER 50u"/1.27u Ni | |
| -363 | 2 X 8 | D | .700/17.78 | .105/2.67 | | |
| -364 | 2 X 10 | D | .900/22.86 | .105/2.67 | | |
| -365 | 2 X 15 | D | 1.400/35.56 | .105/2.67 | | |
| -366 | 2 X 17 | D | 1.600/40.64 | .105/2.67 | | |
| -367 | 2 X 5 | B | .400/10.16 | .150/3.81 | | |
| -368 | 2 X 17 | D | 1.600/40.64 | .150/3.81 | | |
| 66506-369 | 2 X 25 | D | 2.400/60.96 | .150/3.81 | 30u/.76u MIN (NOTE 16) OVER 50u"/1.27u Ni | NOTE 2 |

NOTE 11
NOTE 11

| | | | | | | | | | |
|-------------------|--|---------------------------------------|--|----------------------------------|--|-----------------|--|--|--|
| mat'l. code | | surface ISO 1302 ✓ | | tolerance ISO 406 ISO 1101 | | projection ⊕ | | product family QUICKIE | |
| ltr ecn nodr date | | tolerances unless otherwise specified | | linear | | INCH/MM | | title HEADER QUICKIE SLIM LINE VERTICAL 4 WALL | |
| AK | | angles | | ±2" | | scale 1:1 | | dwg no 66506 | |
| | | dir | | L. SANDERS | | 1/25/95 | | sheet 10 of 10 size A3 | |
| | | engr | | M. SMYK | | 1/25/95 | | | |
| | | chr | | J. ROMBERGER | | 1/25/95 | | | |
| | | appd | | M. SMYK | | 1/25/95 | | type Product Customer Drawing | |
| sheet index | | revision sheet | | | | | | | |

Mouser Electronics

Authorized Distributor

Click to View Pricing, Inventory, Delivery & Lifecycle Information:

[FCI / Amphenol:](#)

[66506-246](#) [66506-019LF](#) [66506-008LF](#) [66506-001LF](#) [66506-007LF](#) [66506-043LF](#) [66506-066LF](#) [66506-001](#)
[66506-043](#) [66506-013LF](#) [66506-218LF](#) [66506-025LF](#) [66506-038LF](#) [66506-082LF](#)