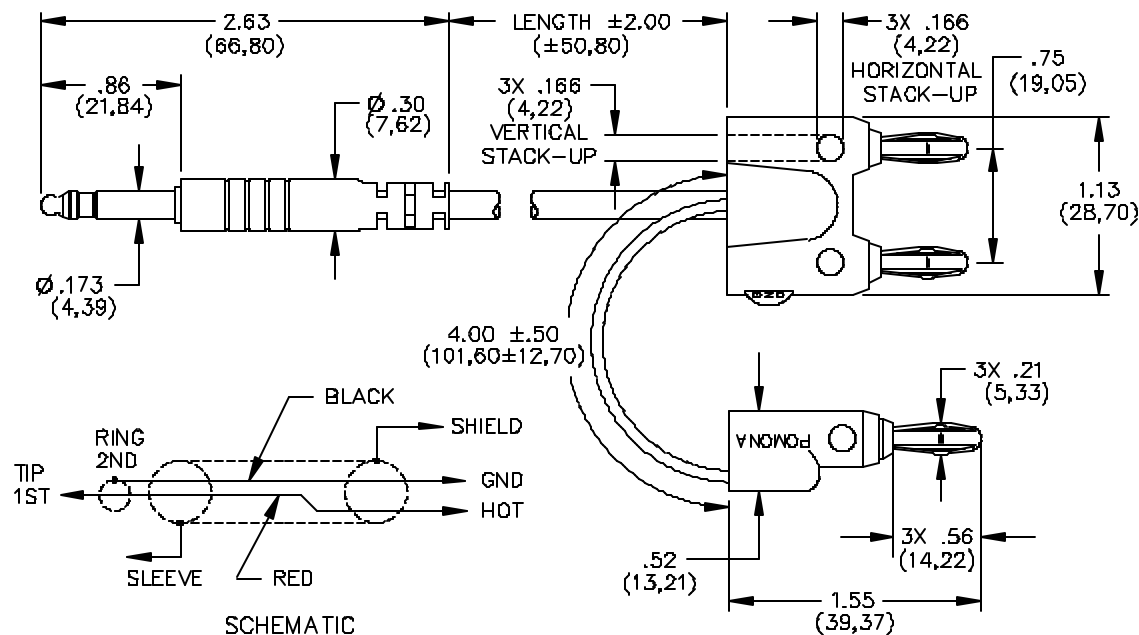


Model 4281 Miniature Phone Plug To Double Plug Balanced Line



FEATURES:

- Converts Bantam (Miniature Phone Plug) Female to Triple Banana Plug Output
- Banana Plug provided for shielding or grounding.
- Lengths other than those specified are available upon request.

MATERIALS:

Conn: 1st end – Bantam Phone Plug

Cable: 2 conductor stranded copper, 26 AWG.

PVC jacket. (.180) O.D. Color: Gray.

Marking: "POMONA 4281-XX".

Shield Lead: 20 AWG, stranding 41x36 tinned copper, PVC. 2.21 (.087) Dia. Color: Green.

Conn: 2nd end – Double and Single Banana Plug

Material: Spring – Beryllium Copper per QQ-C-533, Berylco 25 Cond. HT.

Plug Body – Brass per QQ-B-626, Alloy 360, 1/2 Hard.

Finish: Nickel plated per QQ-N-290, Class 2,

200/300 microinches.

Insulation: Double Banana Plug – Polypropylene molded to plug bodies and cable. Color: Gray.

Marking: "POMONA ELECTRONICS POMONA CALIFORNIA".

Single Banana Plug – Polypropylene molded to plug body and wire. Color: Green.

Marking: "POMONA ELECTRONICS POMONA CALIFORNIA".

RATINGS:

Operating Temperature.: +55° C. (+131° F.) Max.

Operating Voltage: 500 V Peak.

ORDERING INFORMATION: Model 4281-XX

XX=Wire Length, Standard Lengths: 36" (914), 48" (1219), 60" (1524)

Ordering Example: 4281-36 Cable Length is 36" (914)

All dimensions are in inches. Tolerances (except noted): .xx = ±.02" (.51 mm), .xxx = ±.005" (.127 mm).

All specifications are to the latest revisions. Specifications are subject to change without notice.

Registered trademarks are the property of their respective companies. Made in USA

Mouser Electronics

Authorized Distributor

Click to View Pricing, Inventory, Delivery & Lifecycle Information:

Pomona:

4281-60