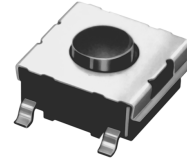


TACTILE



page 151

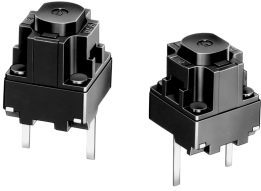


page 161

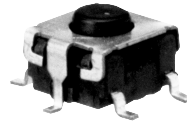
MODEL	B3F	B3FS
Description	Tactile 6 mm/12 mm Square Switch Space saving switch with extended mechanical/electrical service life. Taped radial packaging available.	Tape & Reel Surface Mount Switches Tactile switch that incorporates a snap action contact mechanism which ensures sharp switching operations.
Service Life (Mechanical/Electrical)	B3F-1□□□/3□□□: 1,000,000 ops. min. (High force: 300,000 ops. min.) B3F-4□□□: 3,000,000 ops. min. (High force: 300,000 ops. min.) B3F-5□□□: 10,000,000 ops. min. B3F-6□□□: 1,000,000 ops. min. (High force: 300,000 ops. min.)	1,000,000 ops. min. (General purpose) 300,000 ops. min. (High force)
Contact Form	SPST-NO	SPST-NO
Switching Capacity	50 mA 24 VDC (resistive load)	50 mA, 24 VDC (resistive load)
Action	Momentary	Momentary
Ground Terminal	Models available with or without ground terminal	None
Immersion Cleaning	No immersion cleaning after soldering	No immersion cleaning after soldering
Keycap (Optional)	Refer to "ACCESSORIES" section of data sheet for Keycap information	None
Operating Force (OP)	Refer to "OPERATING CHARACTERISTICS" section of datasheet.	100 gf (General purpose) 150 gf (High force)

IMPORTANT NOTE:

None of the Tactile switch models listed within this catalog are water-washable.



page 165



page 169



page 173

B3M

High Profile Tactile Switch

Stroke length of 0.85 mm. Light touch with a minimum overstroke of 0.25 mm.

2,000,000 ops. min.

SPST-NO

50 mA, 12 VDC (resistive load)

Momentary

None

No immersion cleaning after soldering

Built in

70 ±20 gf

B3S

Surface Mount Tactile Switch

Sealed construction allows immersion cleaning of PC Board with switch mounted and soldered.

500,000 ops. min. (General purpose)
300,000 ops. min. (High force)

SPST-NO

50 mA, 24 VDC (resistive load)

Momentary

Models available with or without ground terminal

Immersion cleaning after soldering

None

160 gf (General purpose)
230 gf (High force)

B3SN

Surface Mount Tactile Switch

Low profile sealed construction for dust or humid environments. Available in bulk or tape packaging.

50,000 ops. min.

SPST-NO

1 to 30 mA, 5 to 24 VDC (resistive load)

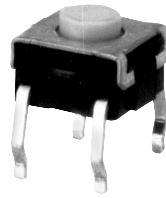
Momentary

Models available with or without ground terminal

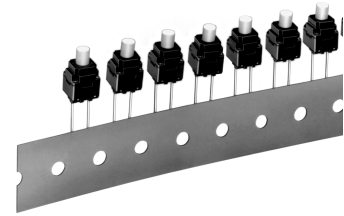
Immersion cleaning after soldering

None

160 ±50 g max.



page 177



page 185

MODEL	B3W	B3WN
Description	Tactile Switch 6 mm/12 mm square switch. Sealed construction allows immersion cleaning after soldering.	Radial Tape Sealed Tactile Switch A compact 8 x 8 mm square size with double sealing construction. Assures water-tight/dust-tight protection.
Service Life (Mechanical/Electrical)	B3W-1□□□: Standard force: 1,000,000 ops. min. High-force: 300,000 ops. min. B3W-4□□□: Standard force: 3,000,000 ops. min. High force: 1,000,000 ops. min.	100,000 ops. min.
Contact Form	SPST-NO	SPST-NO
Switching Capacity	50 mA, 24 VDC (resistive load)	50 mA, 12 VDC (resistive load)
Action	Momentary	Momentary
Ground Terminal	Models available with or without ground terminal	None
Immersion Cleaning	Immersion cleaning after soldering	Immersion cleaning after soldering
Keycap (Optional)	Refer to "ACCESSORIES" section of data sheet for Keycap information	None
Operating Force (OP)	Refer to "OPERATING CHARACTERISTICS" section of datasheet.	200 ±70 gf

NOTE: DIMENSIONS ARE SHOWN IN MILLIMETERS. To convert millimeters to inches divide by 25.4.

OMRON ELECTRONICS LLC.

One East Commerce Drive
Schaumburg, IL 60173
1-800-55-OMRON

Cat. No. GC SW6

04/01

OMRON ON-LINE

Global - <http://www.omron.com>
USA - <http://www.omron.com/oei>
Canada - <http://www.omron.com/oci>

Specifications subject to change without notice.

OMRON CANADA, INC.

885 Milner Avenue
Scarborough, Ontario M1B 5V8
416-286-6465

Printed in the U.S.A.