



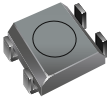







Bourns® Power Chokes - Shielded SMD - Square Shape

| SQUARE SHAPE | | SQUARE SHAPE | |
|--|------------------------------------|---|--|
| Model | Design | Model | Design |
|  SRR3011 | Ferrite DR/RI Core LEAD FREE |  SRR7032 | Ferrite DR/RI Core Base LCP LEAD FREE |
| Size: 3.8 x 3.8 x 1.15 mm; Quantity: 1200 pcs./reel Inductance Range: 1.5 µH to 100 µH; ±30 % Tolerance Current Range at Isat: 180 mA to 1.6 A Q-Factor : 7-39 | | Size: 7.0 x 7.0 x 3.2 mm; Quantity: 1500 pcs./reel Inductance Range: 3.3 µH to 1000 µH; ±20 % Tolerance Current Range at Isat: 140 mA to 2.2 A Q-Factor: 16-120 | |
|  SRR4011 | Ferrite DR/RI Core LEAD FREE |  SRR7045 | Ferrite DR/RI Core Base LCP LEAD FREE |
| Size: 4.8 x 4.8 x 1.15 mm; Quantity: 1200 pcs./reel Inductance Range: 0.47 µH to 150 µH; ±30 % Tolerance Current Range at Isat: 250 mA to 3.2 A Q-Factor : 7-39 | | Size: 7.0 x 7.0 x 4.5 mm; Quantity: 1000 pcs./reel Inductance Range: 10 µH to 1000 µH; ±20 % Tolerance Current Range at Isat: 150 mA to 1.7 A Q-Factor: 22-90 | |
|  SRR0618 | Ferrite DR/RI Core |  SRR0906 | Ferrite DR/RI Core Base LCP |
| Size: 5.0 x 6.3 x 1.8 mm; Quantity: 800 pcs./reel Inductance Range: 2.2 µH to 100 µH; ±20 % Tolerance Current Range at Isat: 270 mA to 2.1 A Q-Factor : 30 | | Size: 12.5 x 10.5 x 6.0 mm; Quantity: 600 pcs./reel Inductance Range: 2.7 µH to 10 mH; ±20 %/15 % Tolerance Current Range at Isat: 80 mA to 5.8 A Q-Factor: 23-100 | |
|  SRR0603 | Ferrite DR/RI Core Base LCP |  SRR0908 | Ferrite DR/RI Core Base LCP |
| Size: 6.5 x 6.5 x 3.3 mm; Quantity: 1000 pcs./reel Inductance Range: 1.5 µH to 1 mH; ±20 %/10 % Tolerance Current Range at Isat: 130 mA to 3.5 A Q-Factor : 11-22 | | Size: 12.5 x 10.5 x 7.5 mm; Quantity: 400 pcs./reel Inductance Range: 1.5 µH to 15 mH; ±20 %/15 % Tolerance Current Range at Isat: 120 mA to 10.0 A Q-Factor: 18-130 | |
|  SRR0604 | Ferrite DR/RI Core Base LCP |  SRR1205 | Ferrite DR/RI Core Base LCP |
| Size: 6.5 x 6.5 x 4.8 mm; Quantity: 1000 pcs./reel Inductance Range: 1.5 µH to 1 mH; ±20 %/10 % Tolerance Current Range at Isat: 150 mA to 4.0 A Q-Factor : 10-23 | | Size: 12.7 x 12.7 x 5.5 mm; Quantity: 600 pcs./reel Inductance Range: 2.5 µH to 820 µH; ±20 %/10 % Tolerance Current Range at Isat: 570 mA to 10.0 A Q-Factor: 5-21 | |

Operating Temperature:

-25 °C to +125 °C

Temperature Rise:

40 °C max. at rated current

Resistance to Soldering Heat:

260 °C for 10 seconds

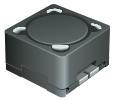


Reliable Electronic Solutions

Asia-Pacific TEL: +886 2 25624117 • FAX: +886 2 25624116
Europe TEL: +41 (0)41 768 5555 • FAX: +41 (0)41 768 5510
N. America TEL: +1-909-781-5500 • FAX: +1-909-781-5006
 TEL: +1-951-781-5500 • FAX: +1-951-781-5006 (after 7/17/04)

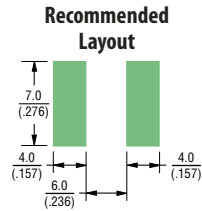
Bourns® Power Chokes - Shielded SMD - Square and Oval Shapes

SQUARE SHAPE



SRR1206

| Model | Design | Description |
|-------|------------|--|
| | Ferrite | Size: 12.7 x 12.7 x 6.5 mm; Quantity: 600 pcs./reel |
| | DR/RI Core | Inductance Range: 2.5 µH to 1.5 mH; ±20%/10% Tolerance |
| | Base LCP | Current Range at Isat: 420 mA to 10.0 A |
| | | Q-Factor: 10-23 |

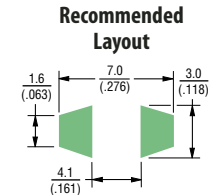


OVAL SHAPE



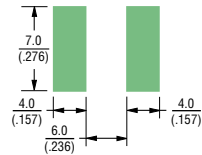
SRR6603

| Model | Design | Description |
|-------|--------------|---|
| | Ferrite | Size: 6.6 x 4.3 x 3.0 mm; Quantity: 700 pcs./reel |
| | DR/RI Core | Inductance Range: 1.0 µH to 10 mH; ±20% Tolerance |
| | Base Ceramic | Current Range at Isat: 20 mA to 3 A |
| | | Q-Factor: 30-50 |



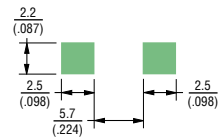
SRR1208

| Model | Design | Description |
|-------|------------|--|
| | Ferrite | Size: 12.7 x 12.7 x 8.5 mm; Quantity: 400 pcs./reel |
| | DR/RI Core | Inductance Range: 2.5 µH to 1.5 mH; ±20%/10% Tolerance |
| | Base LCP | Current Range at Isat: 550 mA to 10.0 A |
| | PREFERRED | Q-Factor: 10-25 |



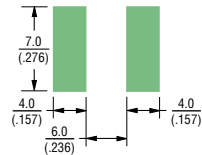
SRR0804

| Model | Design | Description |
|-------|------------|--|
| | Ferrite | Size: 10.5 x 8.0 x 3.8 mm; Quantity: 1000 pcs./reel |
| | DR/RI Core | Inductance Range: 5 µH to 470 µH; ±20%/10% Tolerance |
| | Base LCP | Current Range at Isat: 280 mA to 2.8 A |
| | | Q-Factor: 20-60 |



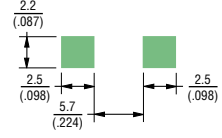
SRR1240

| Model | Design | Description |
|-------|------------|--|
| | Ferrite | Size: 12.5 x 12.5 x 4.0 mm; Quantity: 800 pcs./reel |
| | DR/RI Core | Inductance Range: 1.5 µH to 100 µH; ±30%/20% Tolerance |
| | Base LCP | Current Range at Isat: 1.2 A to 9.0 A |
| | LEAD FREE | Q-Factor: 14-19 |



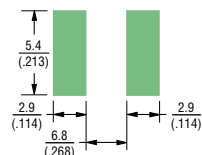
SRR0805

| Model | Design | Description |
|-------|------------|--|
| | Ferrite | Size: 10.5 x 8.0 x 4.7 mm; Quantity: 1000 pcs./reel |
| | DR/RI Core | Inductance Range: 2.2 µH to 1 mH; ±20%/10% Tolerance |
| | Base LCP | Current Range at Isat: 240 mA to 4.9 A |
| | PREFERRED | Q-Factor: 18-45 |



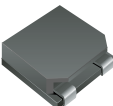
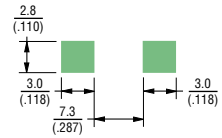
SRR1260

| Model | Design | Description |
|-------|------------|--|
| | Ferrite | Size: 12.5 x 12.5 x 6.0 mm; Quantity: 600 pcs./reel |
| | DR/RI Core | Inductance Range: 1.2 µH to 100 µH; ±30%/20% Tolerance |
| | Base LCP | Current Range at Isat: 1.7 A to 9.8 A |
| | LEAD FREE | Q-Factor: 16-32 |



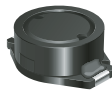
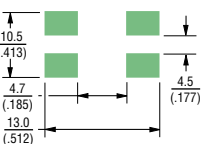
SRR1003

| Model | Design | Description |
|-------|------------|--|
| | Ferrite | Size: 12.7 x 10.0 x 3 mm; Quantity: 1000 pcs./reel |
| | DR/RI Core | Inductance Range: 1.8 µH to 470 µH; ±20%/15% Tolerance |
| | Base LCP | Current Range at Isat: 450 mA to 8.0 A |
| | | Q-Factor: 10-28 |



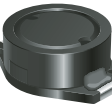
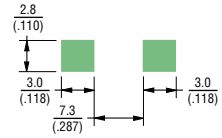
SRR1305

| Model | Design | Description |
|-------|------------|---|
| | Ferrite | Size: 12.5 x 12.5 x 5.0 mm; Quantity: 600 pcs./reel |
| | ER/SB Core | Inductance Range: 0.9 µH to 2.7 µH; ±25% Tolerance |
| | | Current Range at Isat: 10 A to 22 A |
| | | Ultra-fine rectangular enameled copper wire |



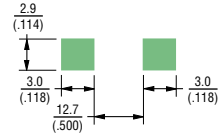
SRR1005

| Model | Design | Description |
|-------|------------|--|
| | Ferrite | Size: 12.7 x 10.0 x 5.0 mm; Quantity: 600 pcs./reel |
| | DR/RI Core | Inductance Range: 1.0 µH to 3.3 mH; ±20%/10% Tolerance |
| | Base LCP | Current Range at Isat: 170 mA to 8.0 A |
| | | Q-Factor: 25-65 |



SRR1806

| Model | Design | Description |
|-------|------------|---|
| | Ferrite | Size: 14 x 18.2 x 6.8 mm; Quantity: 250 pcs./reel |
| | DR/RI Core | Inductance Range: 10 µH to 1 mH; ±20% Tolerance |
| | Base LCP | Current Range at Isat: 900 mA to 8.2 A |
| | | Q-Factor: 19-56 |



Operating Temperature:

-25 °C to +125 °C

Temperature Rise:

40 °C max. at rated current

Resistance to Soldering Heat:

260 °C for 10 seconds