

Connections.

Traditional.

Reliable.

Standardized.

DDM Series D Sub Connectors



3M

Interconnect • Passives • Electromechanical
1-800-CALL-TTI
1-800-ASK-4-TTI (Teleservices)
www.ttiinc.com



3M DDM Series



Fast Facts

- ◆ D Sub design is a proven I/O interface for over 40 years
- ◆ Rugged, stamped, steel shells with multiple hardware options
- ◆ 30 μ" gold plating meets higher reliability application demands
- ◆ IDC Connector System accommodates 20–28 AWG wires
- ◆ Ideal connector for round cable applications
- ◆ Available with 9, 15, 25, and 37 contacts
- ◆ Five junction shell options, over molding available
- ◆ Plug and socket available

Applications

DDM interconnect applications encompass a wide range of communication, industrial, computer and test equipment I/O applications including:

- ◆ Industrial computers and peripherals
- ◆ Test and measurement equipment
- ◆ Programmable logic computers
- ◆ Sensors
- ◆ Motion controls
- ◆ Vision systems
- ◆ Motor drives
- ◆ Process controls



Physical

Insulation

- ◆ **Material:** Thermoplastic Glass Filled Polyester
- ◆ **Flammability:** UL 94V-0
- ◆ **Color:** Black

Contact Material:

- ◆ Copper Alloy (plug), Phosphor Bronze (socket)

Plating

- ◆ **Underplate:** 50 μ" (1.27 μm) Nickel–QQ-N-290, Class 2
- ◆ **Wiping Area:** Gold–MIL-G-45204, Type II, Grade C

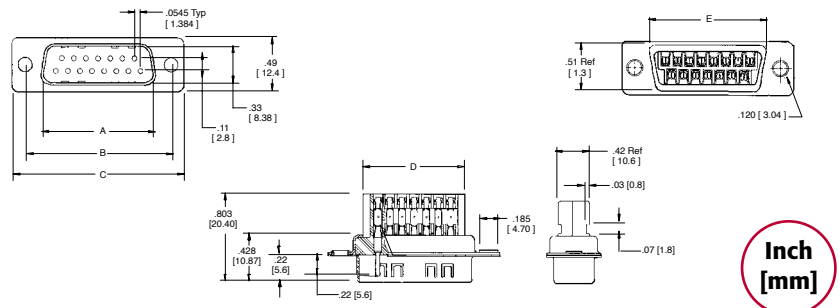
Shell

- ◆ **Material:** Steel
- ◆ **Plating:** Tin
- ◆ **Marking:** Contact Position Numbers

Plug Dimensional Specification

Contact Quantity	Dimensions for Plug				
	A	B	C	D	E
09	.67 [17.0]	.98 [24.9]	1.21 [30.7]	.57 [14.5]	.76 [19.3]
15	.99 [25.2]	1.31 [33.3]	1.54 [39.1]	.89 [22.6]	1.08 [27.4]
25	1.53 [38.9]	1.85 [47.0]	2.09 [53.1]	1.44 [36.6]	1.63 [41.4]
37	2.82 [71.6]	2.50 [63.5]	2.73 [69.3]	2.10 [53.3]	2.27 [57.7]

Tolerance Unless Noted			
	.0	.00	.000
Inch	±.1	±.01	±.005
[] Dimensions for Reference Only			



Electrical

Current Rating:

- ◆ 20 AWG–7.0 Amps / 22 AWG–5.3 Amps
Cable Rating: 115°C min.
- ◆ 24 AWG–4.0 Amps / 26 AWG–2.9 Amps
Cable Rating: 80°C min.
- ◆ 28 AWG–2.0 Amps / 30 AWG–1.0 Amps
Cable Rating: 80°C min.

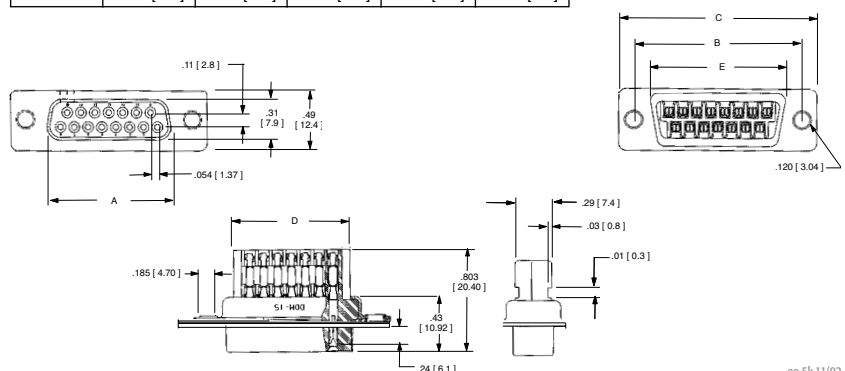
Insulation Resistance: > 1–10⁹ Ω at 500 VDC

Withstanding Voltage: 1000 Vrms at Sea Level

Socket Dimensional Specification

Contact Quantity	Dimensions for Socket				
	A	B	C	D	E
09	.64 [17.0]	.98 [24.9]	1.21 [30.7]	.57 [14.5]	.76 [19.3]
15	.97 [24.6]	1.31 [33.3]	1.54 [39.1]	.89 [22.6]	1.08 [27.4]
25	1.51 [38.4]	1.85 [47.0]	2.09 [53.1]	1.44 [36.6]	1.63 [41.4]
37	2.16 [54.9]	2.50 [63.5]	2.73 [69.3]	2.10 [53.3]	2.27 [57.7]

Tolerance Unless Noted			
	.0	.00	.000
Inch	±.1	±.01	±.005
[] Dimensions for Reference Only			



Environmental

Temperature Rating: –65° to +105°

Tooling

Bench Termination Method

- ◆ **Manual Arbor Press:** CT-20
- ◆ **Tooling Nest:** DDM-MTT-1
- ◆ **Platten:** DDM-MTT-1P

Hand Termination Method

- ◆ **Ratcheting Hand Tool:** DDM-HTT-R1