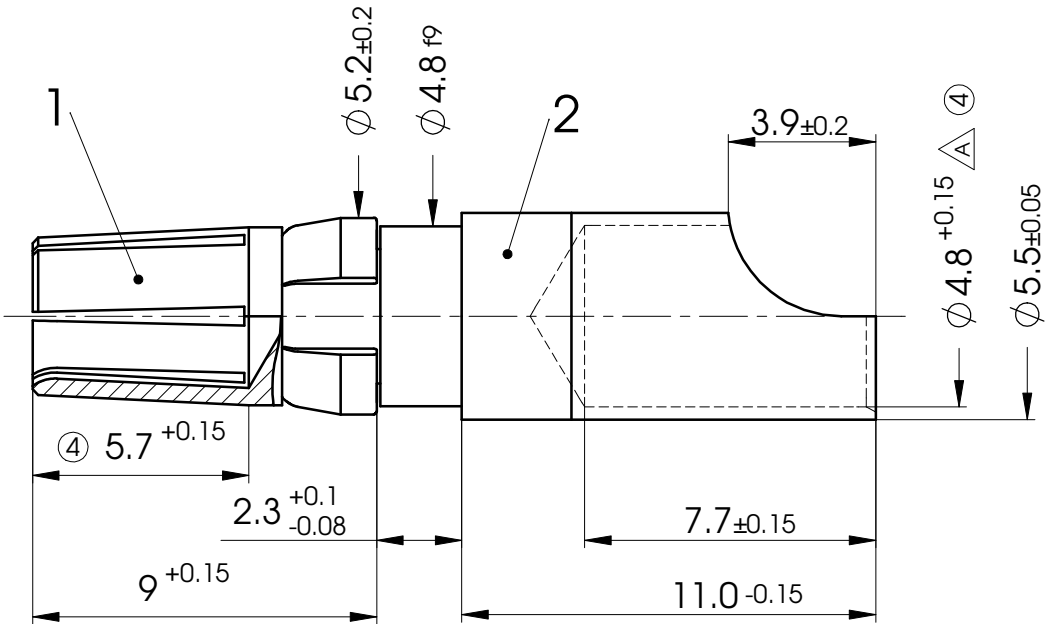
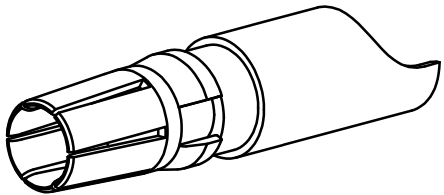



COMMENT:
ALL RIGHTS ARE RESERVED BY US FOR THIS DRAWING. WITHOUT OUR PRIOR CONSENT,
IT MAY NEITHER BE DUPLICATED NOR MADE AVAILABLE TO A THIRD PARTY,
AND IT ALSO MAY NOT BE IMPROPERLY USED BY TE RECEIVER, OR A THIRD PARTY.



(Text No. Info-2)

△ Dimension is not according DIN 41626

| | | | | | | | | | |
|---|------------|-------|-----------------------|---|------------|--------------|---------------------|--|-----------|
| CURRENT | | | 40 A | HIGH POWER CONTACT | | SCALE 5:1 | | | |
| FOR EN 60603-2 | | | formerly DIN 41612 | DATE | | NAME | | | |
| DIMENSIONS IN MM | | | | DRAWN | 09-09-2003 | MSteinbrück | | | |
| MATERIAL + FINISH SEE EXTRA SHEET | | | | CHECKED | 09-06-2006 | MTeubel | | | |
| UNLESS OTHERWISE SPECIFIED DIMENSIONS FOR REFERENCE ONLY | | | |  www.fctgroup.com | | | PART NO. FMP051S | | |
| 4 | 09-06-2006 | 11308 | | | | | | | |
| REV. | DATE | INDEX | | ORIGINAL: DIN A4-DRAWING AS A FILE | | | REPLACEMENT FOR: | | PAGE: 1/1 |