

AMPHENOL PART NUMBER CONFIGURATION

U90 - G 1 X 1 - 1 X X X

HEAT SINK OPTION

- 1 = NO HEAT SINK, NO CLIP AND NO LIGHT PIPE
- = PIN STYLE HEAT SINK AND CLIP (H=6.5mm; SAN HEIGHT)
- = PIN STYLE HEAT SINK AND CLIP (H=4.2mm; PCI HEIGHT)
- = PIN STYLE HEAT SINK AND CLIP (H=13.5mm; TALL)
- = PIN-FIN HEAT SINK AND CLIP (H=6.5mm; SAN HEIGHT)
- = PIN-FIN HEAT SINK AND CLIP (H=4.2mm; PCI HEIGHT)
- = PIN-FIN HEAT SINK AND CLIP (H=13.5mm; TALL)

NOTE: FOR DIMENSION "H" LOCATION SEE SHEET 2

PACKAGING

- 1 = TRAY PACKAGING W/ HEAT SINK IN SEPARATE TRAY
- A = TRAY PACKAGING W/ HEAT SINK ASSEMBLED
- I = TAPE AND REEL PACKAGING W/ HEAT SINK IN SEPARATE TRAY

LIGHT PIPE OPTION

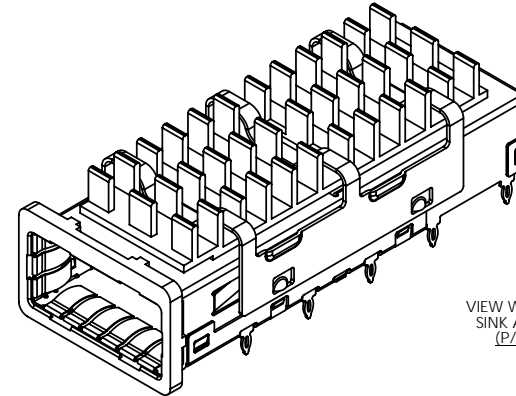
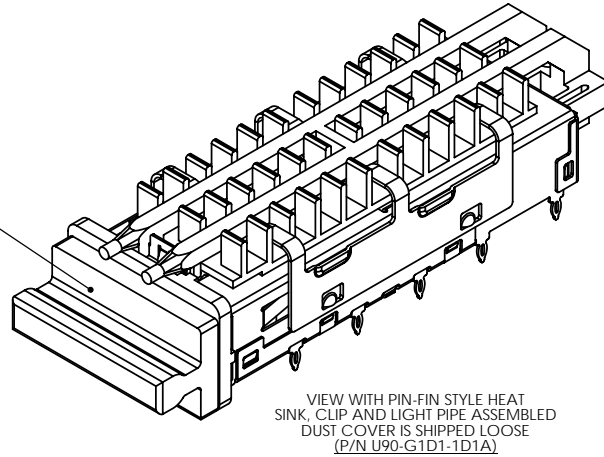
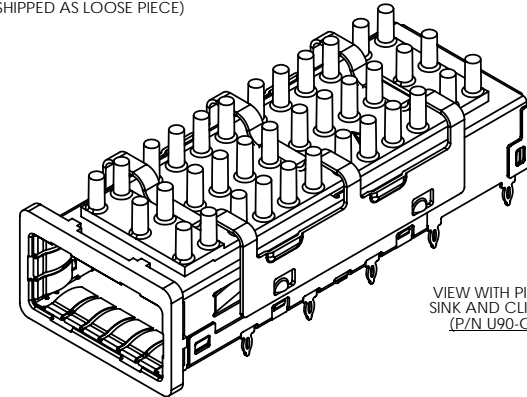
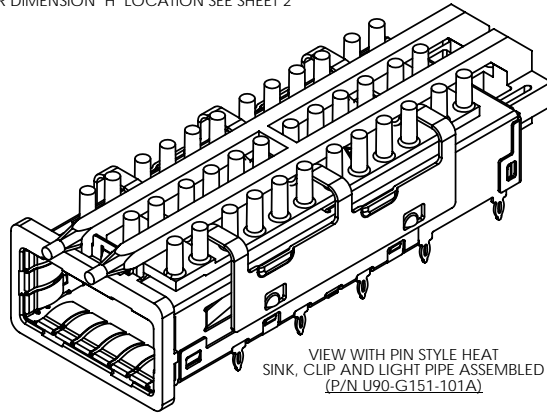
- 0 = WITHOUT LIGHT PIPE
- 1 = WITH LIGHT PIPE

OPTIONAL DUST COVER

- 0 = WITHOUT DUST COVER
- D = WITH DUST COVER SHIPPED AS LOOSE PIECE)

REVISIONS

REV	ECN	DESCRIPTION	DATE	APPROVED
E		PORT TO PORT SPACING REVISED	MAY 4/09	ZL



DUST COVER (SHIPPED LOOSE)
P/N U79-111-9000-P

DO NOT SCALE DRAWING

THIS DOCUMENT CONTAINS PROPRIETARY INFORMATION AND SUCH INFORMATION MAY NOT BE DISCLOSED TO OTHERS FOR ANY PURPOSE OR USED FOR MANUFACTURING PURPOSES WITHOUT PERMISSION FROM AMPHENOL CANADA CORP.



UNLESS OTHERWISE SPECIFIED DIMENSIONS ARE IN MILLIMETERS TOLERANCES ARE:

DECIMALS ANGLES
XX ± 0.15 ± 0.5°
XX ± 0.10

MATERIAL AND FINISH

SEE NOTE 1

REF.

CODE IDENT. NO. 03554

APPROVALS DATE

DRAWN ZLJ OCT 2/08
DESIGNED ZLJ OCT 2/08
CHECKED J.SI OCT 2/08

CIA APPD

E APPD

DWG APPD A.GREEN OCT 2/08

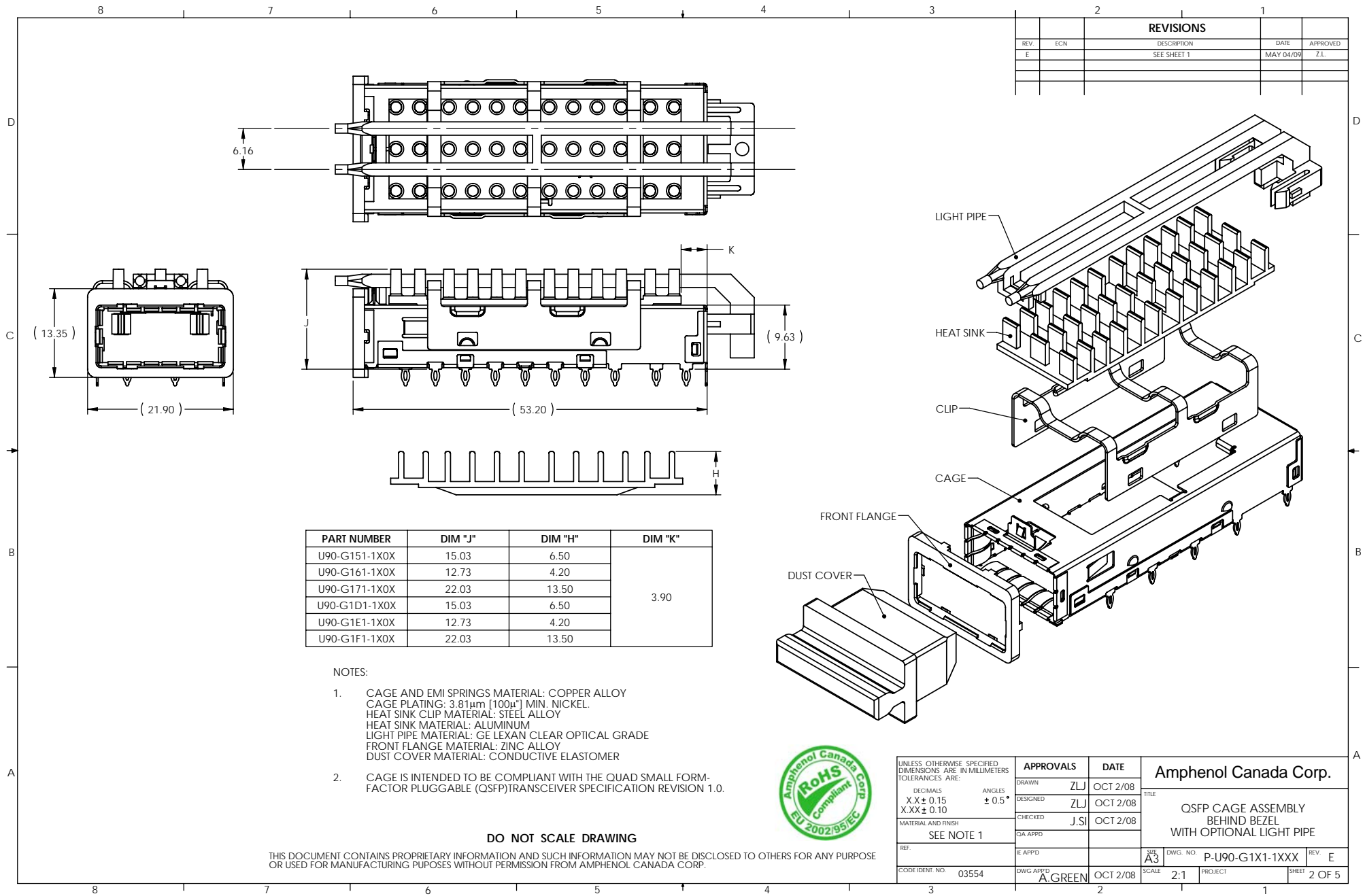
SCALE 2:1

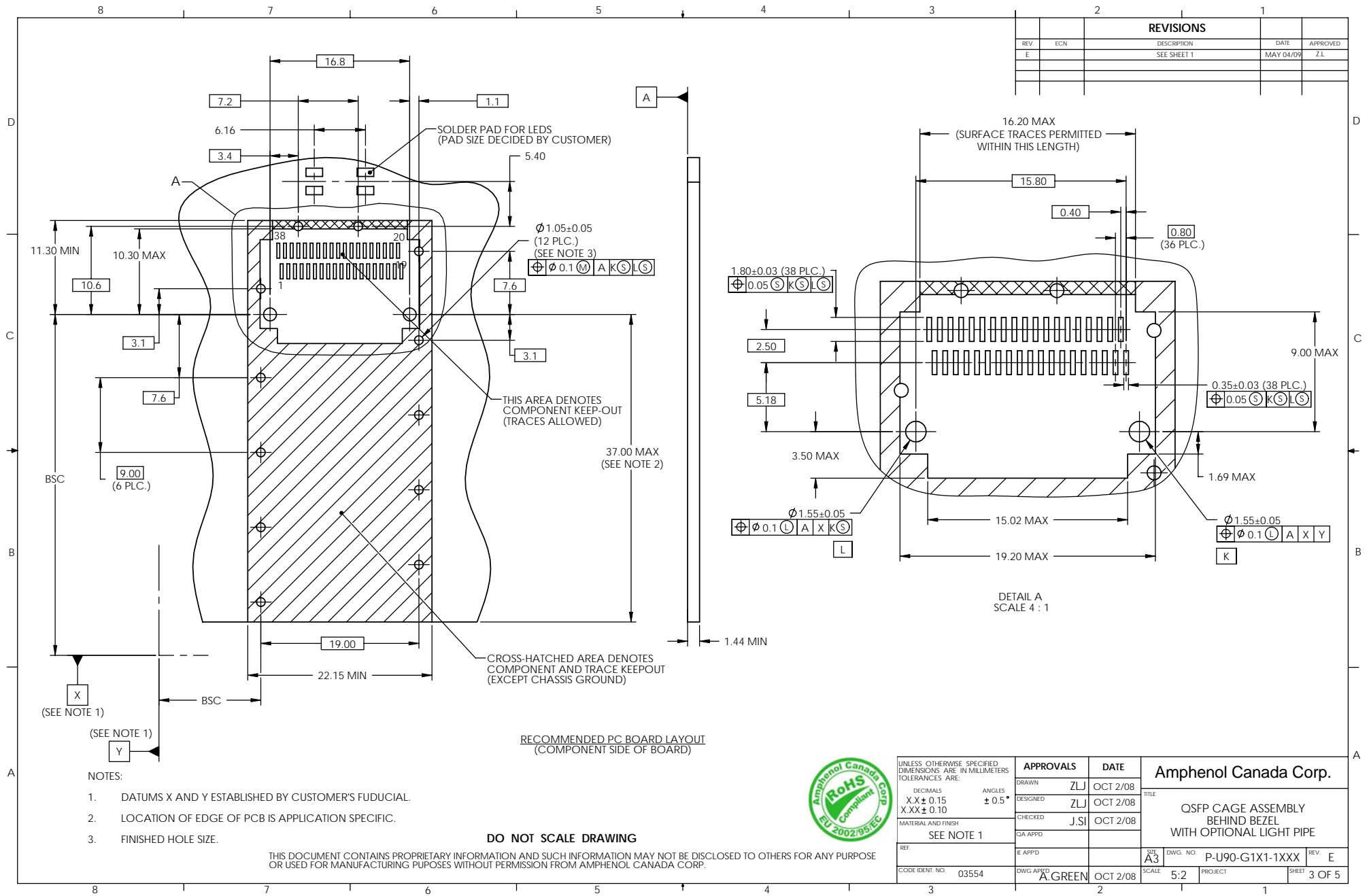
Amphenol Canada Corp.

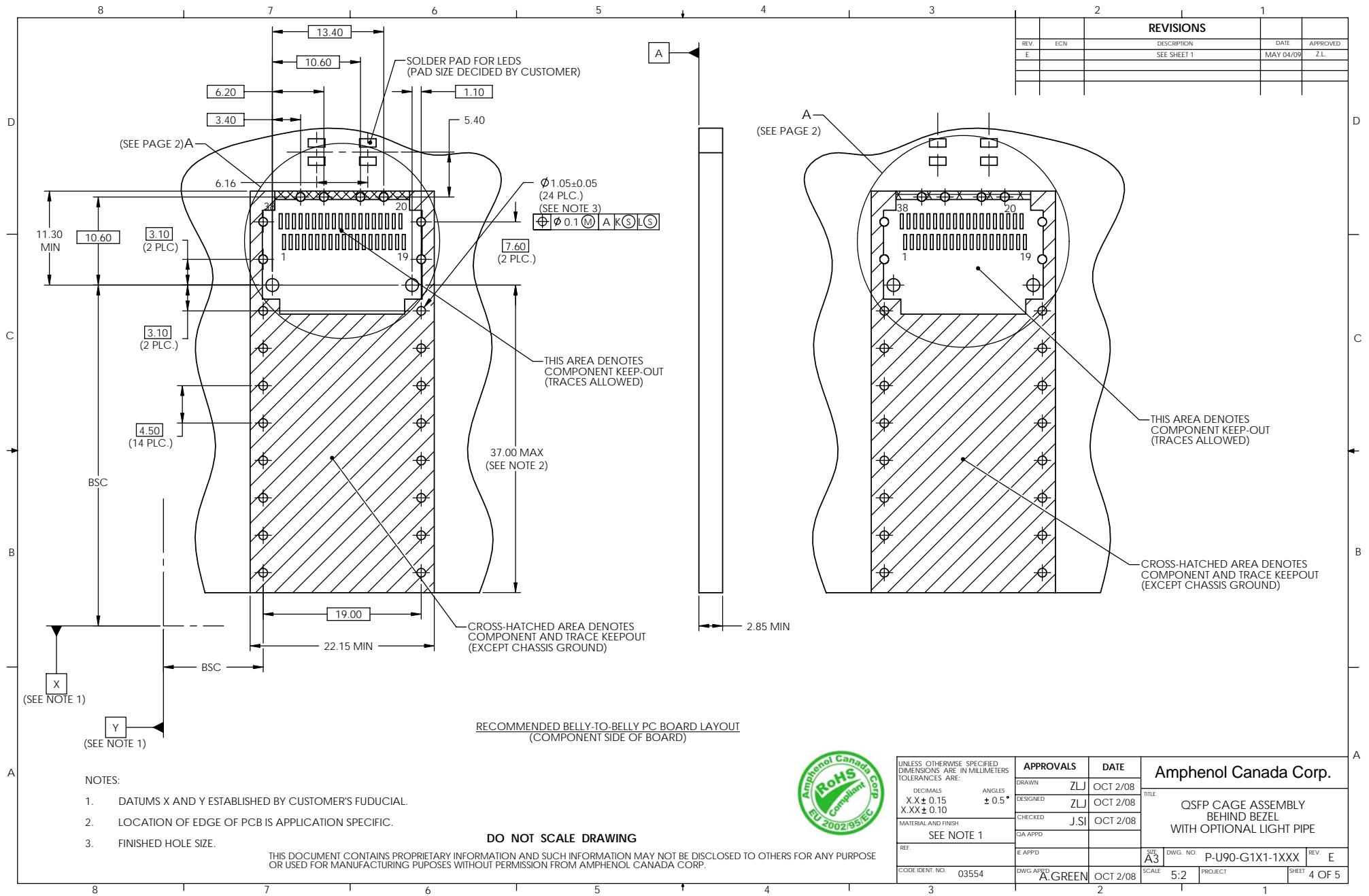
TITLE
OSFP CAGE ASSEMBLY
BEHIND BEZEL
WITH OPTIONAL LIGHT PIPE

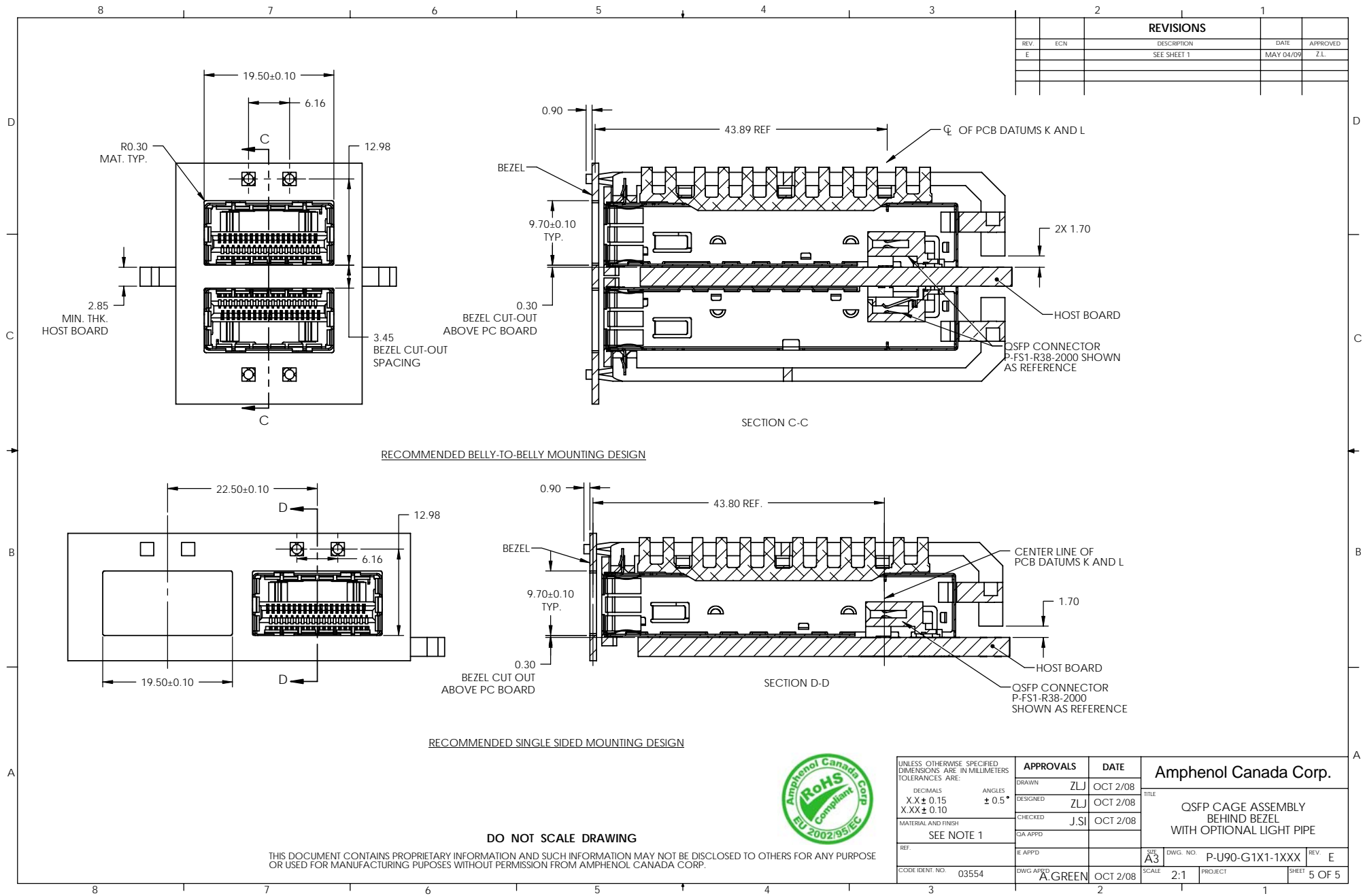
SIZE A3 DWG. NO. P-U90-G1X1-1XXX REV. E

PROJECT SHEET 1 OF 5









REVISONS				
REV	ECN	DESCRIPTION	DATE	APPROVED
E		SEE SHEET 1	MAY 04/09	Z.L.



UNLESS OTHERWISE SPECIFIED DIMENSIONS ARE IN MILLIMETERS TOLERANCES ARE:		APPROVALS		DATE		Amphenol Canada Corp.			
DECIMALS XX ± 0.15 XXX ± 0.10		ANGLES ± 0.5°		DRAWN ZLJ	OCT 2/08	TITLE QSFP CAGE ASSEMBLY BEHIND BEZEL WITH OPTIONAL LIGHT PIPE			
MATERIAL AND FINISH SEE NOTE 1		DESIGNED ZLJ		CHECKED J.SI	OCT 2/08				
REF.		EIA APPD							
CODE IDENT. NO. 03554		E APPD A.GREEN		OCT 2/08					
2		DWG APPD		SIZE A3		DWG. NO. P-U90-G1X1-1XXX		REV. E	
1		SCALE		2:1		PROJECT		SHEET 5 OF 5	
1		1		1		1		1	