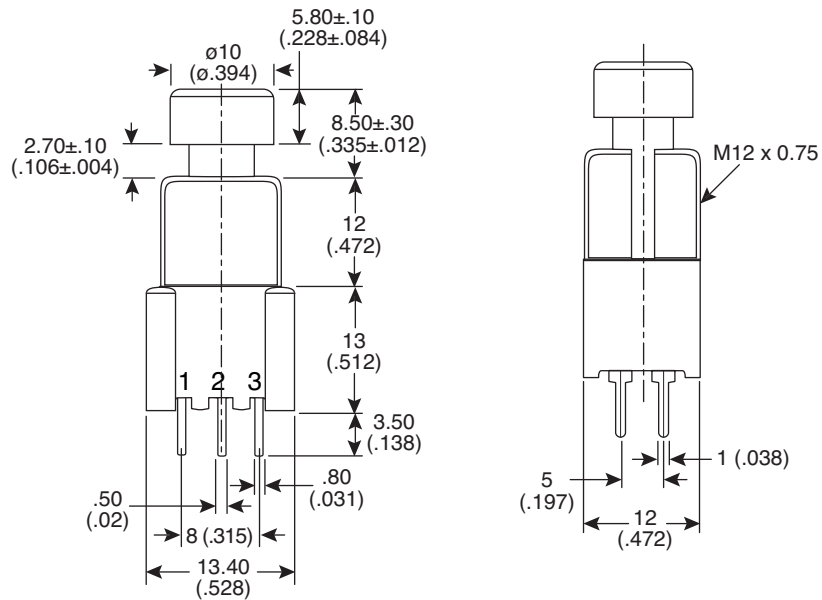
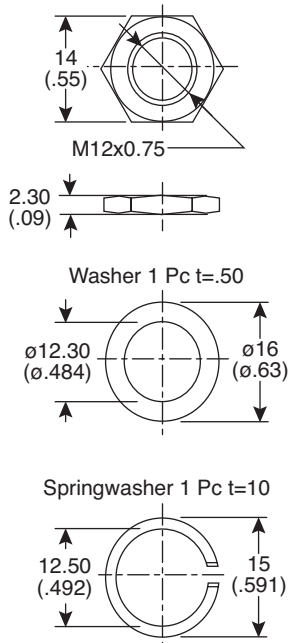
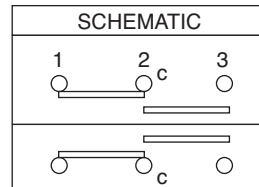
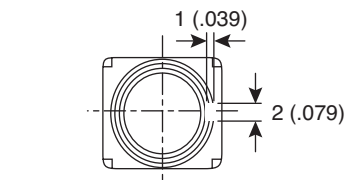




## Foot Switch

### 107-SF12011-L



Dimensions: mm (in.)

#### Mechanical Specifications:

- Operating Force: 1.6±0.5Kgf
- Life Cycles: 10,000 cycles
- Tolerances (unless otherwise specified): ±0.3mm
- Type: DPDT latching

#### Electrical Specifications:

- Rating: 6A/125VAC; 3A/250VAC; 4A/30VDC
- Contact Resistance: 50mΩ max. silver contacts
- Insulation Resistance: 500VDC-100 MΩ min.
- Dielectric Strength: 1000VAC for 1 minute