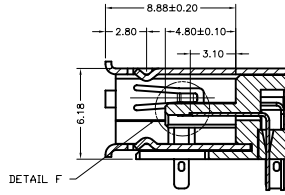
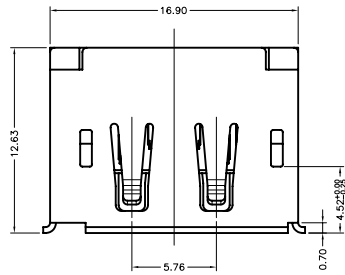


This document is the property of Amphenol Corporation and is delivered on the express condition that it is not to be disclosed, reproduced or used, in whole or in part, for manufacture or sale by anyone other than Amphenol Corporation without its prior consent, & that no right is granted to disclose or to use any information in this document.

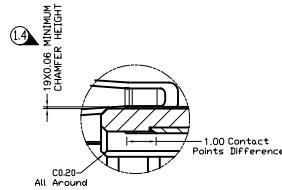
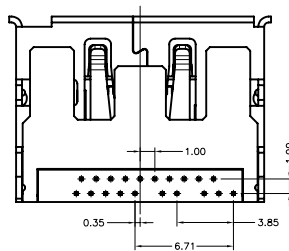
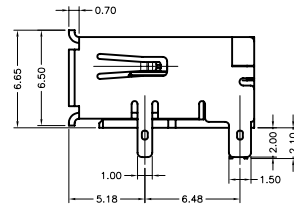
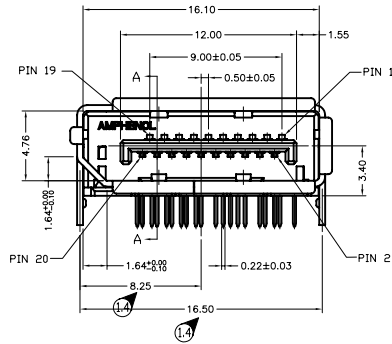
# Customer Drawing



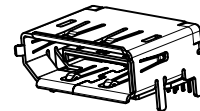
| REVISIONS |        |                   |          |          |
|-----------|--------|-------------------|----------|----------|
| SYM       | ECN    | DESCRIPTION       | DATE     | APPROVED |
| 1.1       | HKXXXX | Initially release | 01/30/08 | IP       |
| 1.2       | HKXXXX | Changed Dimension | 03/05/08 | IP       |
| 1.3       | HKXXXX | Update Drawing    | 03/23/08 | IP       |
| 1.4       | HKXXXX | Add the dimension | 04/03/08 | IP       |



SECTION A-A



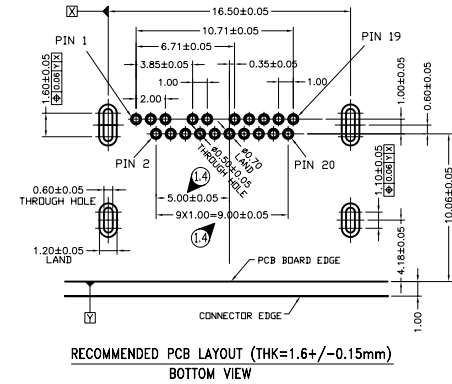
DETAIL E SCALE 2:1



**NOTES:**

- MATERIAL:**  
HOUSING: HIGH TEMPERATURE PLASTIC UL94V-0, BLACK.  
CONTACT: PHOSPHOR BRONZE ,THICKNESS=0.20mm  
SHIELD: BRASS OR SPCC, THICKNESS=0.4mm
- FINISH:**  
CONTACT: REFER TO P/N SYSTEM ON MATING AREA  
1.27~2.54um NICKEL UNDERPLATE OVERALL  
2.54~5.08um PURE TIN ON SOLDER TAIL  
SHIELD: REFER TO P/N SYSTEM
- ELECTRICAL SPECIFICATION:**  
CURRENT RATING: 0.5A  
CONTACT RESISTANCE: 30mΩ MAX  
INSULATOR RESISTANCE: 100MΩ MIN(UNMATED) 10MΩ MIN(MATED)  
DIELECTRIC WITHSTANDING VOLTAGE: 500 V AC(UNMATED) 300 V AC(MATED)
- ORDER P/N SYSTEM:** DP-F202-002-X-X-XX  

|                      |                               |
|----------------------|-------------------------------|
| MATING AREA PLATING: | PACKING METHOD:               |
| 1- 0.76um MIN Au.    | N/A- PACKING IN TRAY.         |
| 2- 0.38um MIN Au.    | TR- PACKING IN TAPE AND REEL. |
| A- Gold FLASH        |                               |



| ITEM                                  | PART NO. | REQ'D                                       | DESCRIPTION |
|---------------------------------------|----------|---------------------------------------------|-------------|
| <b>PARTS LIST</b>                     |          |                                             |             |
| UNLESS OTHERWISE SPECIFIED TOLERANCES |          | APPROVAL DATE                               |             |
| U.S. METRIC                           |          | DRAWN Drack.Xie 04/01/08                    |             |
| .X +/- ±0.50                          |          | CHECKED Ran.Xiao 04/01/08                   |             |
| .XX +/- ±0.25                         |          | CHECKED                                     |             |
| .XXX +/- ±0.10                        |          | DRAWING FILE :                              |             |
| FRACTIONS +/-                         |          | Drawing/DP/CDP-F202-002-X-X-XX              |             |
| ANGLES +/-                            |          | TITLE                                       |             |
| REMOVE SHARP EDGES                    |          | DISPLAYPORT R/A T/H RECEPTACLE ( SHELL DIP) |             |
| DIMENSIONS                            |          | ANGLE OF PROJECTION                         |             |
| U.S. INCHES                           |          | SIZE DRAWING NO.                            |             |
| (METRIC) (MM)                         |          | A3 C DP-F202-002-X-X-XX REV. 1.4            |             |
|                                       |          | SCALE NONE SHEET 1 OF 1                     |             |