

AMPHENOL PART NUMBER CONFIGURATION
U95 - T 1 X 1 - 1 X X X

REVISIONS			
REV	DESCRIPTION, ECN, EAR NO.	DATE	APP'D
A	INITIAL RELEASE	JUL. 5/13	ZLJ
B	SHOW DUST COVER, UPDATE NOTES	AUG. 2/13	ZLJ
C	UPDATED LIGHT PIPE OPTIONS	OCT. 24/13	AC
D	TITLE BOX HEADING UPDATED	NOV. 05/13	KH

HEAT SINK OPTION

1 = NO HEAT SINK OR CLIP SHIPPED
5 = PIN STYLE HEAT SINK AND CLIP (H=6.5mm; SAN HEIGHT)
6 = PIN STYLE HEAT SINK AND CLIP (H=4.2mm; PCI HEIGHT)
7 = PIN STYLE HEAT SINK AND CLIP (H=13.5mm; TALL)
N = PIN-FIN HEAT SINK (NICKEL PLATED) AND CLIP (H=6.5mm; SAN HEIGHT)
P = PIN-FIN HEAT SINK (NICKEL PLATED) AND CLIP (H=4.2mm; PCI HEIGHT)
R = PIN-FIN HEAT SINK (NICKEL PLATED) AND CLIP (H=13.5mm; TALL)
Y = EXTRUDED CUSTOM HEAT SINK FOR FRONT TO BACK AIR FLOW (NICKEL PLATED) AND CLIP (H=6.94mm)
W = EXTRUDED CUSTOM HEAT SINK FOR FRONT TO BACK AIR FLOW (NICKEL PLATED) AND CLIP (H=8.72mm)

PACKAGING OPTION

1 = TRAY PACKAGING (LIGHT PIPE AND/OR HEAT SINK SHIPPED LOOSE IF ORDERED)
A = TRAY PACKAGING (LIGHT PIPE AND/OR HEAT SINK ASSEMBLED TO THE CAGE)

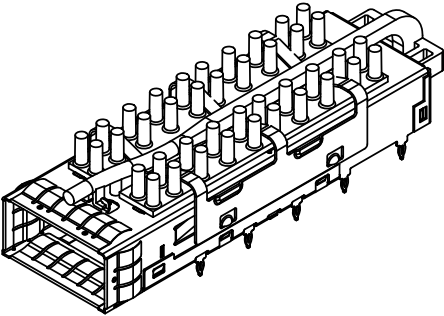
OPTIONAL LIGHT PIPE

0 = NO LIGHT PIPE
1 = DUAL BARREL LIGHT PIPE - ROUND OUTLET
7 = SINGLE BARREL LIGHT PIPE - ROUND OUTLET

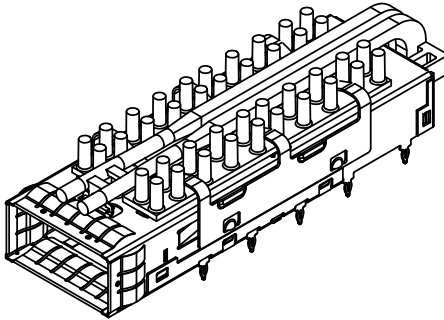
OPTIONAL DUST COVER (CONDUCTIVE)

0 = WITHOUT DUST COVER
D = WITH DUST COVER (SHIPPED LOOSE PIECE)

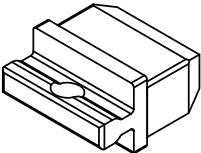
NOTE: FOR DIMENSION "H" SEE SHEET 2



VIEW WITH SINGLE BARREL LIGHT PIPE
AND ROUND PIN HEAT SINK
(NO DUST COVER)
(P/N U95-T151-107A)



VIEW WITH DUAL BARREL LIGHT PIPE
AND ROUND PIN HEAT SINK
(NO DUST COVER)
(P/N U95-T151-101A)



CONDUCTIVE DUST COVER
SHOWN (OPTIONAL)



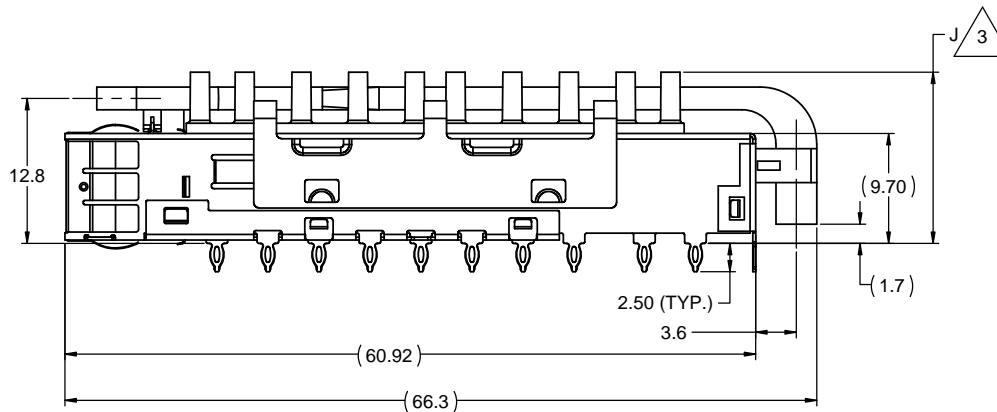
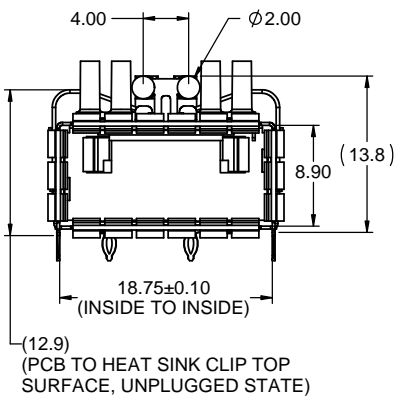
UNLESS SPECIFIED OTHERWISE	DRAWN	A.C.	JUL5/13
UNIT	MILLIMETERS	CHECKED	ZLJ
REFERENCE IN PARENTHESES	M.E. APP'D		
	Q.A. APP'D		
GENERAL TOLERANCES	DWG APP'D	ZLJ	JUL5/13
1 DECIMAL PLACE	ENG. REL. NO.	-	
2 DECIMAL PLACES	REF.		
ANGULAR DEGREES	THIRD ANGLE PROJECTION		
	DO NOT SCALE DRAWING		

Amphenol High Speed Interconnects
A Division of Amphenol Corp. www.amphenol-highspeed.com

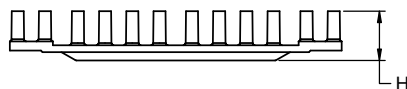
UltraPort QSFP 1X1 CAGE ASSEMBLY THRU BEZEL WITH HEAT SINK OPTIONS AND LIGHT PIPE OPTIONS

DWG. NO.	P-U95-T1X1-1XXX	REV	D
CODE ID NO.	03554	DWG SIZE:	C
SCALE:	3:1	SHEET	1 OF 5

REVISIONS			
REV	DESCRIPTION, ECN, EAR NO.	DATE	APPD
A	INITIAL RELEASE	JUL. 5/13	ZLJ
B	SHOW DUST COVER, UPDATE NOTES	AUG. 2/13	ZLJ
C	UPDATED LIGHT PIPE OPTIONS	OCT. 24/13	AC
D	TITLE BOX HEADING UPDATED	NOV. 05/13	KH



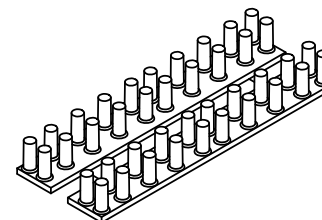
VIEW WITH DUAL BARREL LIGHT PIPE
AND ROUND PIN HEAT SINK
(NO DUST COVER)
(P/N U95-T151-101A)



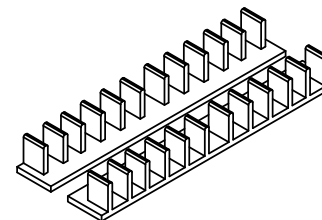
PART NUMBER	DIM "J"	DIM "H"
U95-T15(N)1-1XXX	15.03	6.50
U95-T16(P)1-1XXX	12.73	4.20
U95-T17(R)1-1XXX	22.03	13.50
U95-T1Y1-1XXX	15.47	6.94
U95-T1W1-1XXX	17.25	8.72

NOTES:

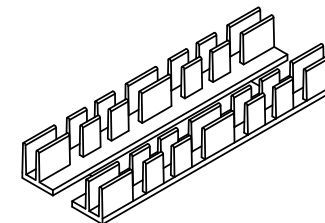
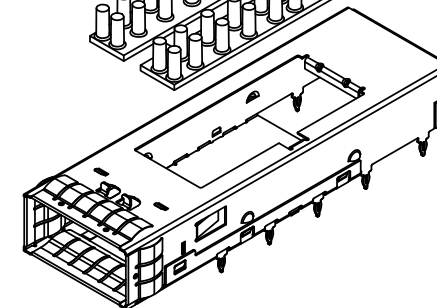
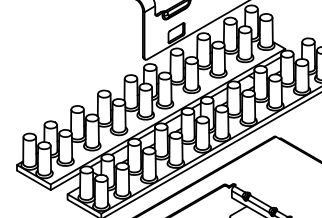
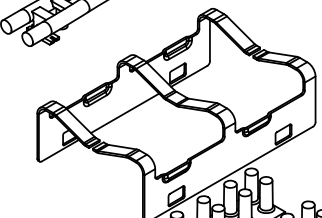
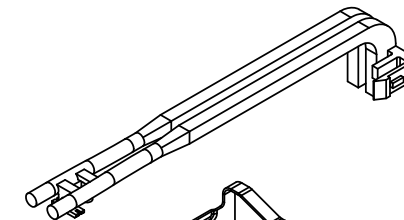
- MATERIAL:
CAGE AND EMI SPRINGS: COPPER ALLOY
CAGE PLATING: 3.81µm [100µ"] MIN. NICKEL.
LIGHT PIPE: GE LEXAN RESIN, CLEAR OPTICAL GRADE
HEAT SINK: ALUMINUM ALLOY
HEAT SINK CLIP: STEEL ALLOY
DUST COVER: CONDUCTIVE RUBBER
- DUST COVER IS SHIPPED AS A LOOSE PIECE IF ORDERED.
- DIMENSION "J" IS IN THE UNPLUGGED STATE



HEAT SINK FOR U95-T15(6.7)1-1X(1.7)X



HEAT SINK FOR U95-T1N(P,R)1-1X(1.7)X

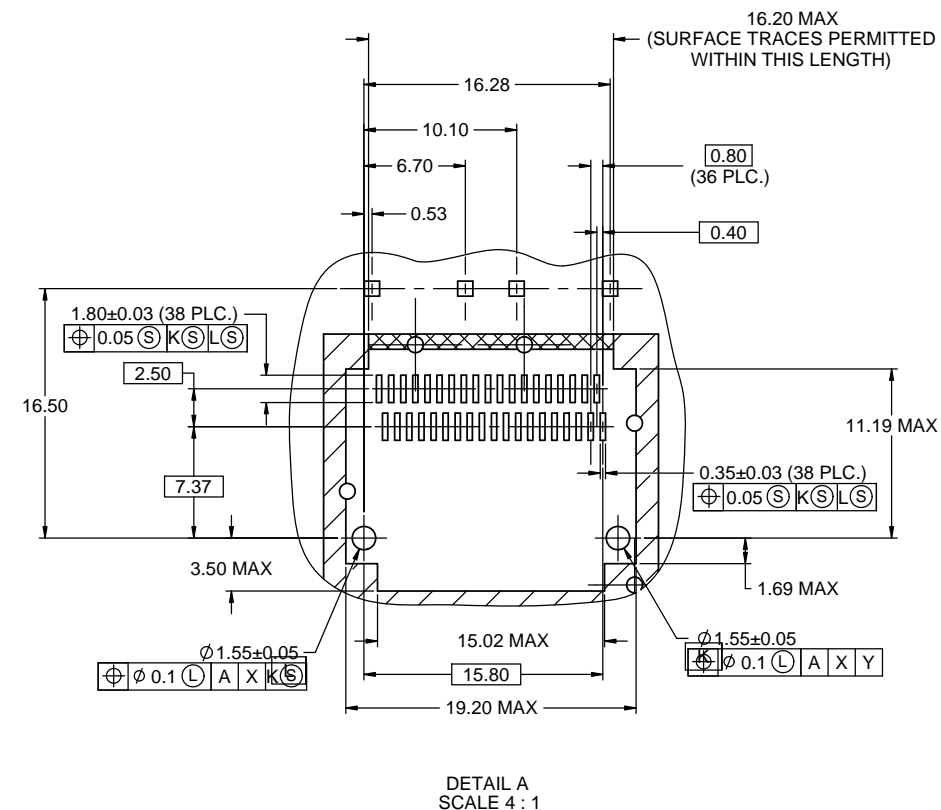
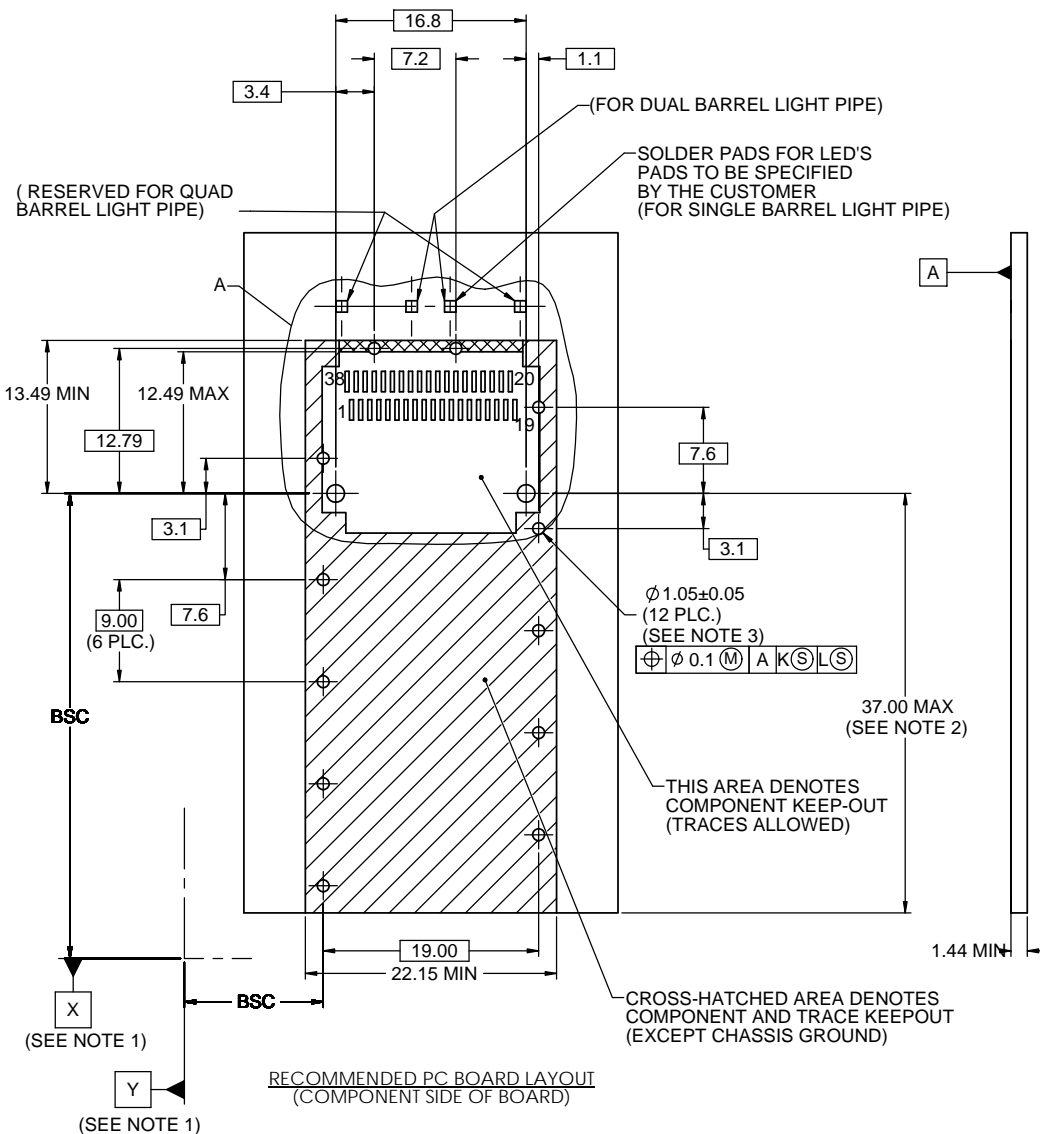


HEAT SINK FOR U95-T1Y(W)1-1X(1.7)X

UNLESS SPECIFIED OTHERWISE		DRAWN	A.C.	JUL5/13
UNIT	MILLIMETERS	CHECKED	ZLJ	JUL5/13
REFERENCE IN PARENTHESES		M.E. APP'D		
		Q.A. APP'D		
GENERAL TOLERANCES		DWG APP'D	ZLJ	JUL5/13
1 DECIMAL PLACE	±0.2	ENG. REL. NO.	-	
2 DECIMAL PLACES	±0.15	REF.		
ANGULAR DEGREES	±1°	THIRD ANGLE PROJECTION		

Amphenol High Speed Interconnects			
A Division of Amphenol Corp. www.amphenol-highspeed.com			
UltraPort QSFP 1X1 CAGE ASSEMBLY THRU BEZEL WITH HEAT SINK OPTIONS AND LIGHT PIPE OPTIONS			
DWG. NO.			REV D
P-U95-T1X1-1XXX			
CODE ID NO.	03554	DWG SIZE: C	SCALE: 3:1
SHEET 2 OF 5			

REVISIONS			
REV	DESCRIPTION, ECN, EAR NO.	DATE	APPD
A	INITIAL RELEASE	JUL. 5/13	ZLJ
B	SHOW DUST COVER, UPDATE NOTES	AUG. 2/13	ZLJ
C	UPDATED LIGHT PIPE OPTIONS	OCT. 24/13	AC
D	TITLE BAX HEADING UPDATED	NOV. 05/13	KH



NOTES:

- DATUMS X AND Y ESTABLISHED BY CUSTOMER'S FIDUCIAL.
- LOCATION OF EDGE OF PCB IS APPLICATION SPECIFIC.
- FINISHED HOLE SIZE.

THIS DOCUMENT CONTAINS PROPRIETARY INFORMATION AND SUCH INFORMATION MAY NOT BE DISCLOSED TO OTHERS FOR ANY PURPOSE OR USED FOR MANUFACTURING PURPOSES WITHOUT WRITTEN PERMISSION FROM AMPHENOL CANADA CORP.



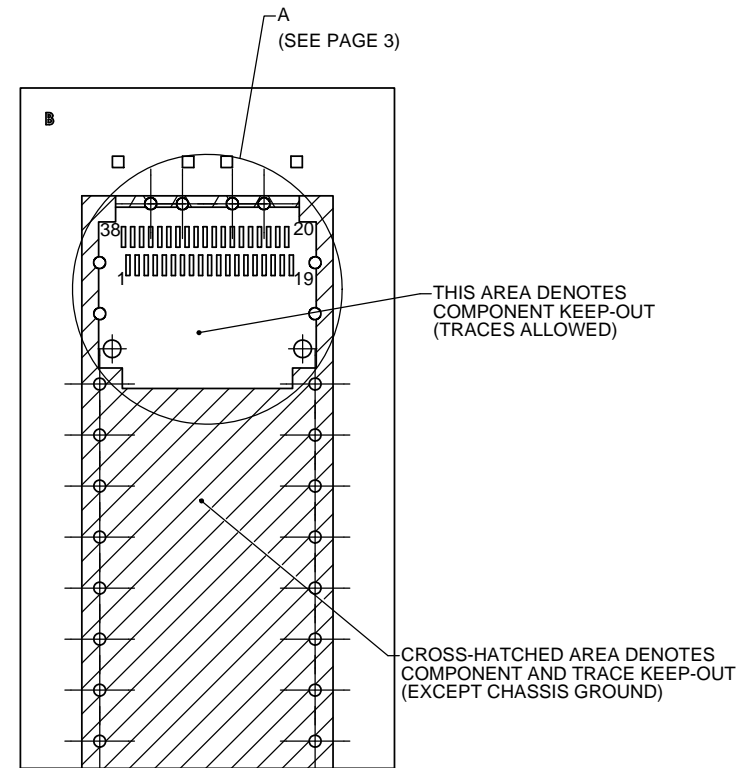
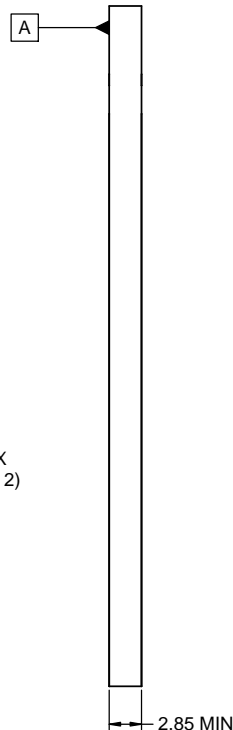
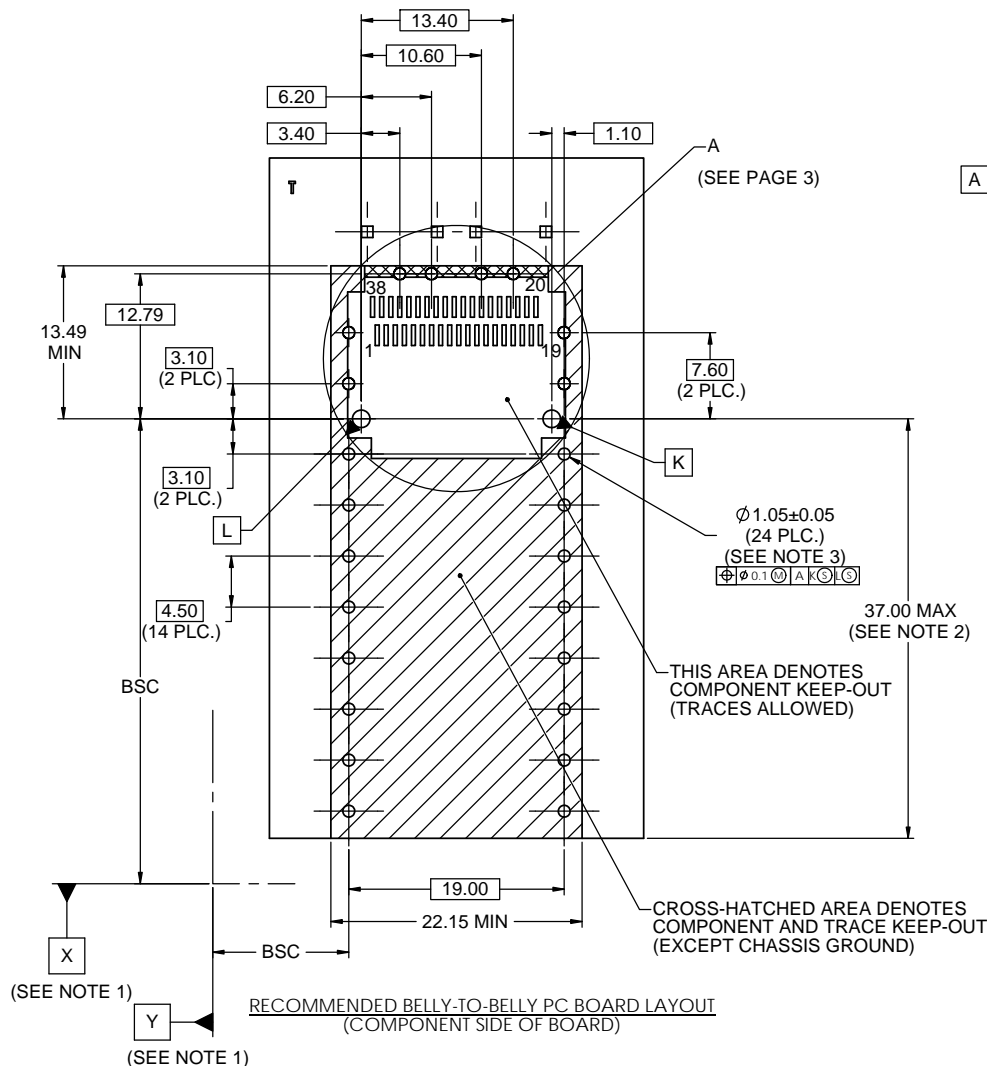
UNLESS SPECIFIED OTHERWISE		DRAWN	A.C.	JUL5/13
UNIT	MILLIMETERS	CHECKED	ZLJ	JUL5/13
REFERENCE IN PARENTHESES		M.E. APPD		
		Q.A. APPD		
GENERAL TOLERANCES		DWG APPD	ZLJ	JUL5/13
1 DECIMAL PLACE	±0.2	ENG. REL. NO.	-	
2 DECIMAL PLACES	±0.15	REF.		
ANGULAR DEGREES	±1°	THIRD ANGLE PROJECTION		

Amphenol High Speed Interconnects
A Division of Amphenol Corp. www.amphenol-highspeed.com

UltraPort QSFP 1X1 CAGE ASSEMBLY THRU BEZEL WITH HEAT SINK OPTIONS AND LIGHT PIPE OPTIONS

DWG. NO.	P-U95-T1X1-1XXX			REV D
CODE ID NO.	03554	DWG SIZE:	C	SCALE: 3:1
				SHEET 3 OF 5

REVISIONS			
REV	DESCRIPTION, ECN, EAR NO.	DATE	APPD
A	INITIAL RELEASE	JUL. 5/13	ZLJ
B	SHOW DUST COVER, UPDATE NOTES	AUG. 2/13	ZLJ
C	UPDATED LIGHT PIPE OPTIONS	OCT. 24/13	AC
D	TITLE BOX HEADING UPDATED	NOV. 05/13	KH



NOTES:

- DATUMS X AND Y ESTABLISHED BY CUSTOMER'S FIDUCIAL.
- LOCATION OF EDGE OF PCB IS APPLICATION SPECIFIC.
- FINISHED HOLE SIZE.



THIS DOCUMENT CONTAINS PROPRIETARY INFORMATION AND SUCH INFORMATION MAY NOT BE DISCLOSED TO OTHERS FOR ANY PURPOSE OR USED FOR MANUFACTURING PURPOSES WITHOUT WRITTEN PERMISSION FROM AMPHENOL CANADA CORP.

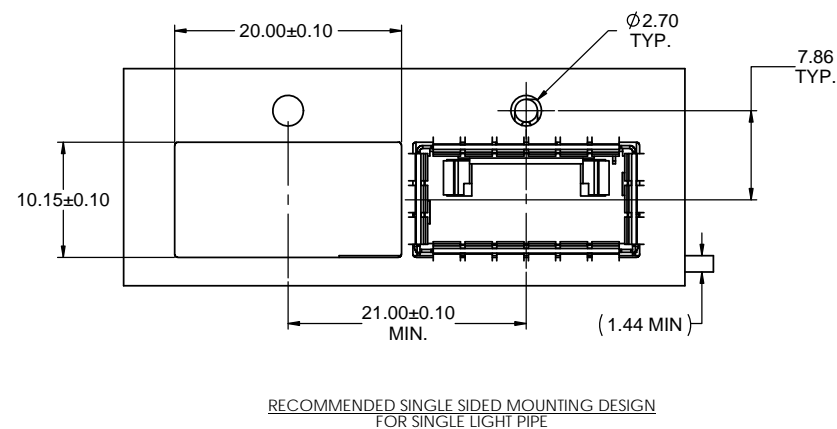
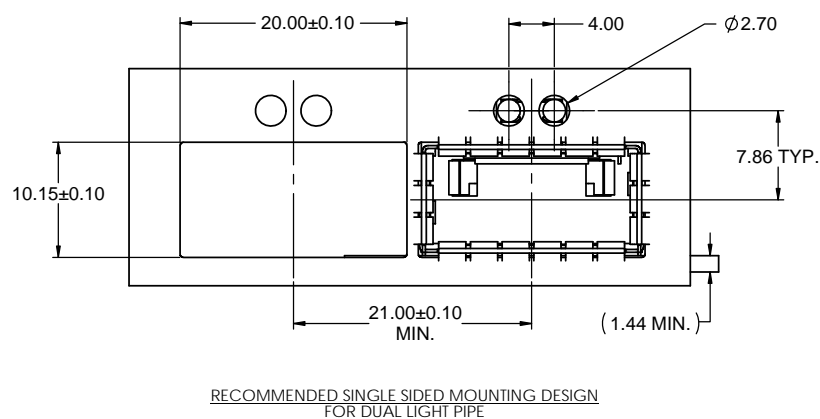
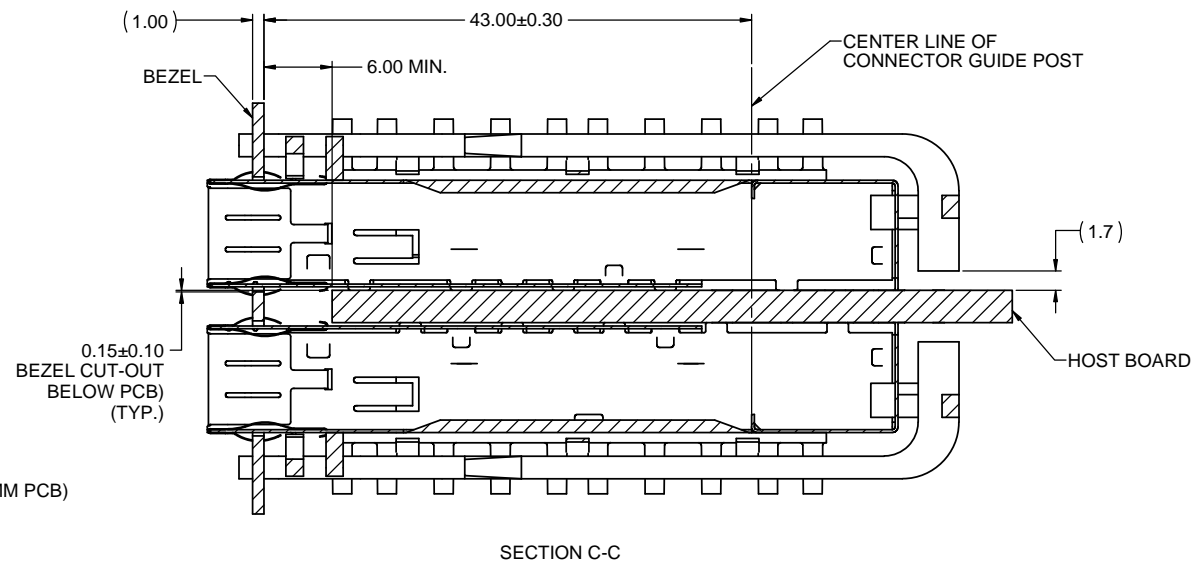
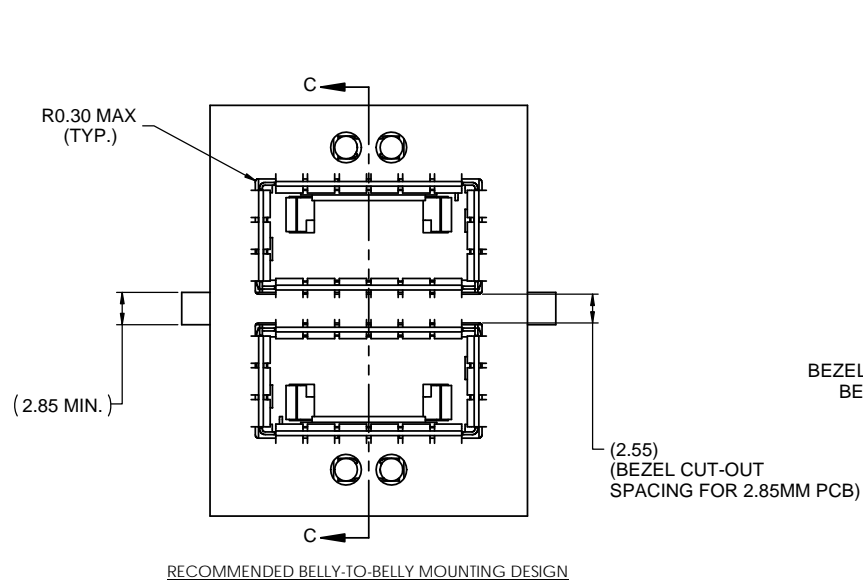
UNLESS SPECIFIED OTHERWISE		DRAWN	A.C.	JUL5/13
UNIT	MILLIMETERS	CHECKED	ZLJ	JUL5/13
REFERENCE IN PARENTHESES		M.E. APPD		
		Q.A. APPD		
GENERAL TOLERANCES		DWG APPD	ZLJ	JUL5/13
1 DECIMAL PLACE	±0.2	ENG. REL. NO.	-	
2 DECIMAL PLACES	±0.15	REF.		
ANGULAR DEGREES	±1°	THIRD ANGLE PROJECTION		
		DO NOT SCALE DRAWING		

Amphenol High Speed Interconnects
A Division of Amphenol Corp. www.amphenol-highspeed.com

UltraPort QSFP 1X1 CAGE ASSEMBLY THRU BEZEL WITH HEAT SINK OPTIONS AND LIGHT PIPE OPTIONS

DWG. NO.	P-U95-T1X1-1XXX			REV D
CODE ID NO.	03554	DWG SIZE:	C	SCALE: 3:1
		SHEET 4 OF 5		

REVISIONS			
REV	DESCRIPTION, ECN, EAR NO.	DATE	APPD
A	INITIAL RELEASE	JUL. 5/13	ZLJ
B	SHOW DUST COVER, UPDATE NOTES	AUG. 2/13	ZLJ
C	UPDATED LIGHT PIPE OPTIONS	OCT. 24/13	AC
D	TITLE BOX HEADING UPDATED	NOV. 05/13	KH



UNLESS SPECIFIED OTHERWISE	DRAWN	A.C.	JUL5/13
UNIT	MILLIMETERS	CHECKED	ZLJ
REFERENCE IN PARENTHESES	M.E. APPD	Q.A. APPD	
GENERAL TOLERANCES	DWG APPD	ZLJ	JUL5/13
1 DECIMAL PLACE	±0.2	ENG. REL. NO.	-
2 DECIMAL PLACES	±0.15	REF.	
ANGULAR DEGREES	±1°	THIRD ANGLE PROJECTION	

Amphenol High Speed Interconnects A Division of Amphenol Corp. www.amphenol-highspeed.com			
UltraPort QSFP 1X1 CAGE ASSEMBLY THRU BEZEL WITH HEAT SINK OPTIONS AND LIGHT PIPE OPTIONS			
DWG. NO.	P-U95-T1X1-1XXX		
CODE ID NO.	03554	DWG SIZE:	C
SCALE:	3:1	SHEET	5 OF 5

THIS DOCUMENT CONTAINS PROPRIETARY INFORMATION AND SUCH INFORMATION MAY NOT BE DISCLOSED TO OTHERS FOR ANY PURPOSE OR USED FOR MANUFACTURING PURPOSES WITHOUT WRITTEN PERMISSION FROM AMPHENOL CANADA CORP.