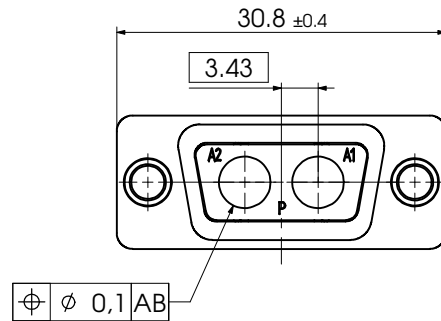
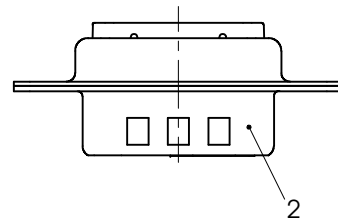
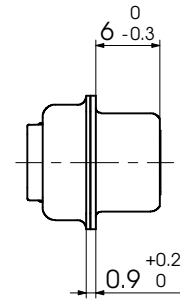
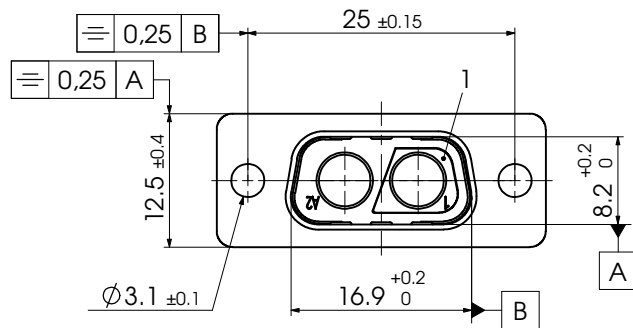


COMMENT:  
ALL RIGHTS ARE RESERVED BY US FOR THIS DRAWING. WITHOUT OUR PRIOR CONSENT,  
THIS DOCUMENT CANNOT BE REPRODUCED OR TRANSMITTED IN ANY FORM OR BY ANY  
MEANS, ELECTRONIC OR MECHANICAL, INCLUDING PHOTOCOPYING, RECORDING,  
AND IT ALSO MAY NOT BE IMPROPERLY USED BY THE RECEIVER, OR A THIRD PARTY.



2	1	Shell	Steel	tin plated
1	1	Insulator	PBT (-55°C - +130°C)	black
No.	St.	Part	Type Description/Material	Surface plating/Colour/Class
			Measurement without tolerance acc. to ISO 2768-m	SCALE 2:1
			NAME / DATE	
			DRAWN Denzinger 16-05-2003	
			CHECKED Floßmann 16-05-2003	
			<b>FCT</b> group fctgroup.com	
1				
REV.	DATE	CH.-NO.	ORIGINAL: DIN A3-DRAWING AS A FILE	REPLACEMENT FOR: F2W2PC-K120 a

TITLE		REV.
D-Sub Mixed-Layout Connector		1
DWG.NO.	F2W2PC-K120	
PAGES		1