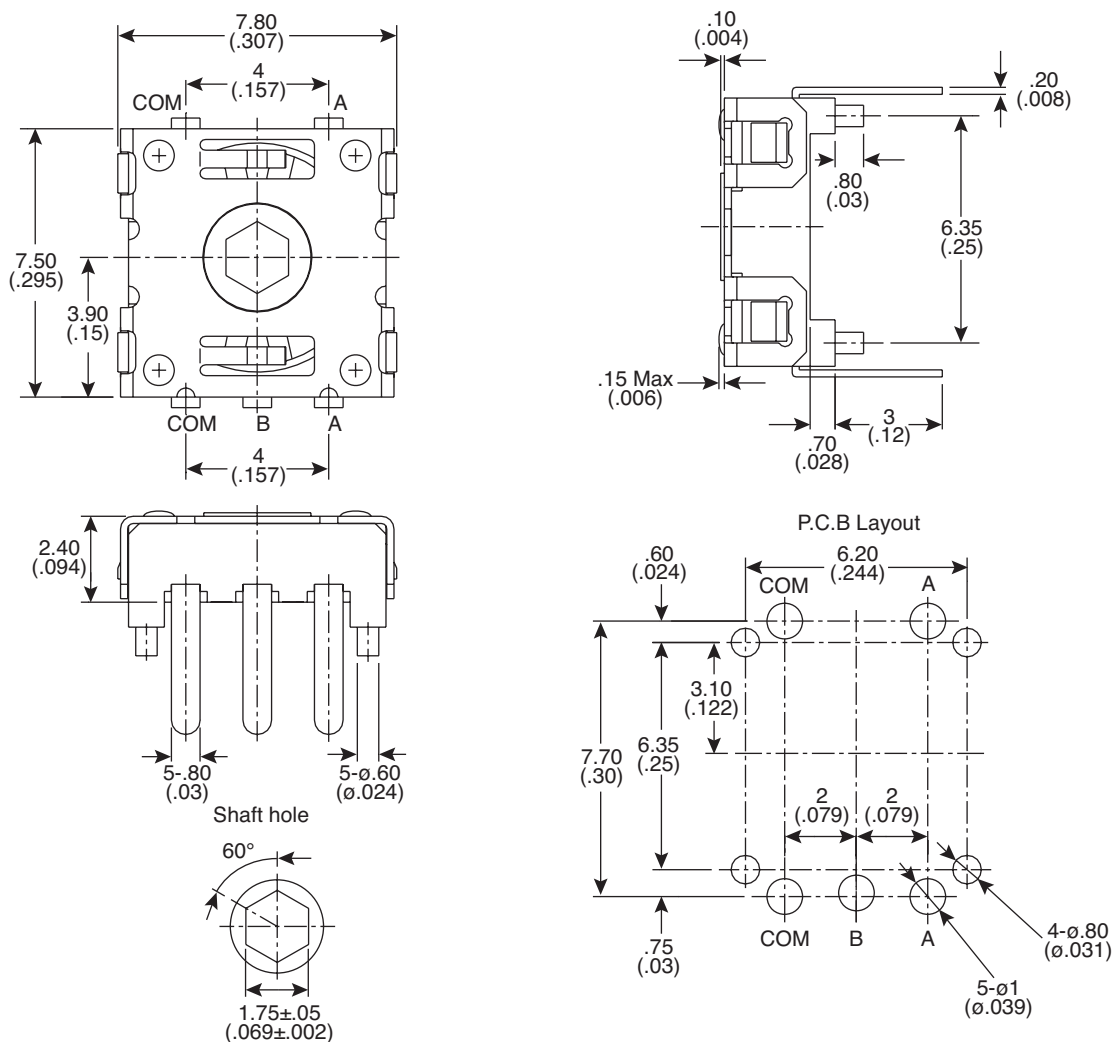


Dimensions: mm (in.)

**Electrical Specifications:**

- Contact Rating: 1mA/10VDC
- Contact Resistance: $\leq 10\Omega$
- Insulation Resistance: $\geq 50M\Omega$ 50VDC
- Dielectric Strength: 50VAC 1 minute

Mechanical Specifications:

- Operation Force $25 \pm 10gf$
- Operating Temperature: $-10^{\circ}C$ - $+60^{\circ}C$
- Number and position of segment points: 24 segment points (each segment angle: $15^{\circ} \pm 3^{\circ}$)
- Output resolution: 12 pulse/360°

Note:

- RoHS Compliant

Encoder
101-5434-EV

Mountain
Switch