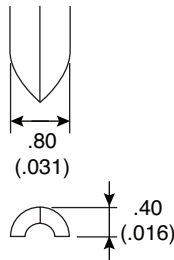
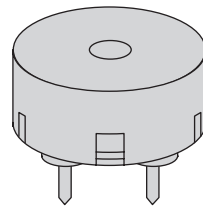
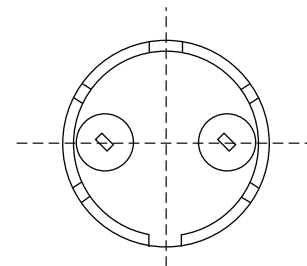
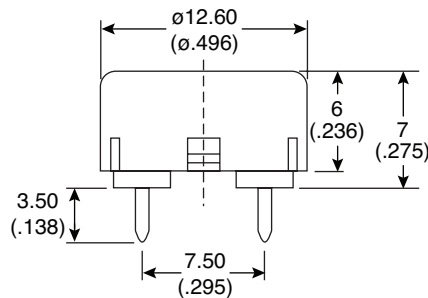


Part Number:

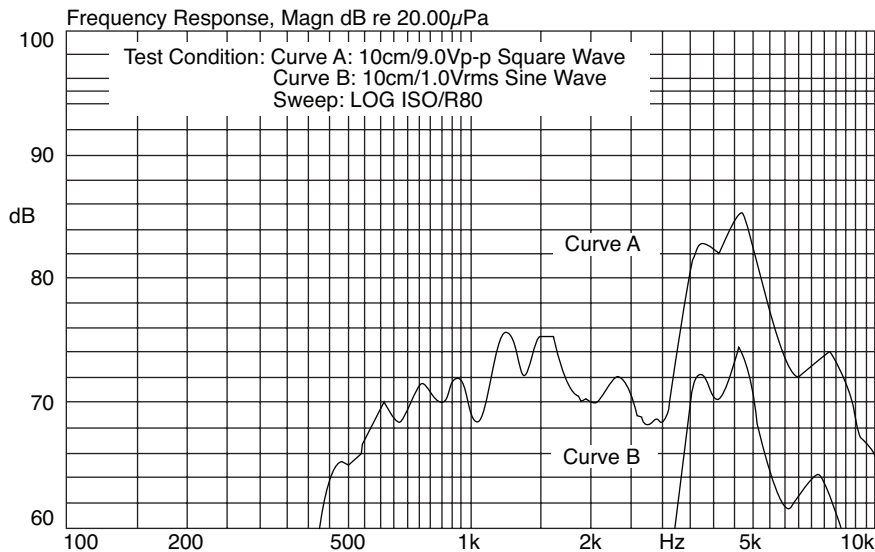
254-PB507-ROX



Pin Terminal



Piezoelectric Buzzer  
(External Drive)



KT-400285

**Electrical Specifications:**

- Sound Pressure Level: 80dB min. at 4.0KHz/9.0Vp-p Square Wave/10cm.  
70dB min. at 4.0KHz/1Vrms Sine Wave/10cm.
- Capacitance: 7,500pF ± 30% at 120Hz
- Current Consumption: 3mA max. at 4.0KHz/9.0Vp-p Square Wave
- Allowable Input Voltage: 15Vp-p max.

**Mechanical Specifications:**

- Operating Temperature: -20°C to +70°C
- Storage Temperature: -40°C to +85°C

**Materials:**

- Case: PBT (UL 94V-0)
- Lead Pin: Phosphor Bronze
- Weight: 0.7 grams

**Note:**

- RoHS compliant by exemption

Specifications are subject to change without notice. No liability or warranty implied by this information. Environmental compliance based on producer documentation.