



KLDHCX Series
High Current PCB Mount DC Power Jack

Features

- 2.0mm and 2.5mm
- Built in DC On/Off Switch
- Laptop and Palm Computers, Portable Modems, Radar Detectors, and Other Portable Device Applications

Performance Specifications

Materials and Finish

- Body** : PBT Thermoplastic, UL 94V-0 Rated, Color Black
- Center Pin** : Brass, Nickel Plated
- Contact #1** : Brass, Tin Plated
- Contact #2** : Phosphor Bronze, Tin plated
- Contact #3** : Brass, Tin Plated

Electrical Characteristics

- Rated Current** : 5A
- Rated Voltage** : 16VRMS
- Insulation Resistance** : 50 Megohms Min. at 100 or 200V DC for 1 Minute
- Contact Resistance** : 30 Milliohms Max.
- Dielectric Withstanding Voltage**: 250V AC Min. for 1 Minute

Mechanical Characteristics

- Durability Test** : 5000 Cycles
- Insertion Force** : 3.0kg Max.
- Extraction Force** : 0.3kg Min.

DC POWER CONNECTORS

KLDHCX Series

Ordering Information



Series

KLDHCX-0202 - High Current PCB Mount DC Power Jack

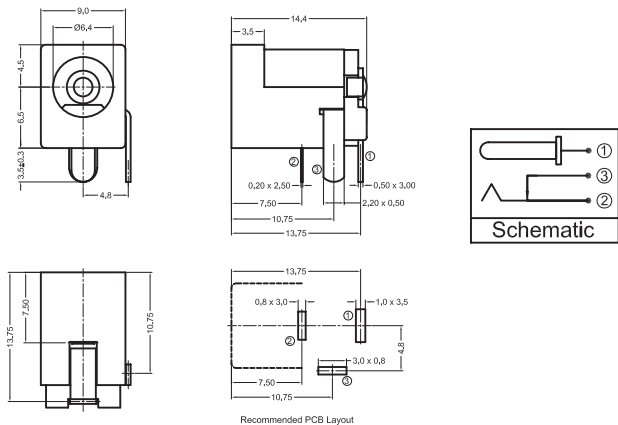
Diameter

- A - 2.0mm Center Pin Diameter
- B - 2.5mm Center Pin Diameter

Lead Style

- Blank - Standard Straight
- C - Crimped

KLDHCX-0202-x



KLDHCX-0202-xC

