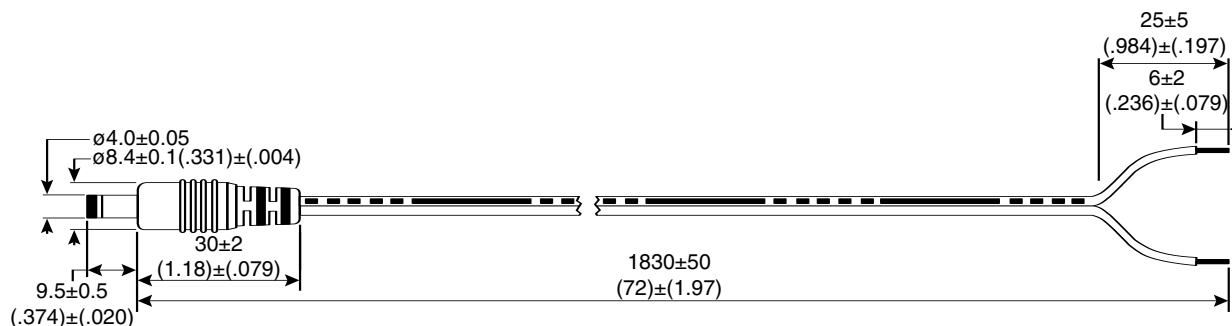


DC Power Cord

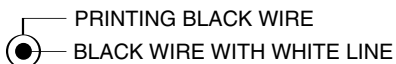
172-0171

KOBI CONN

DC Power Cord



CONNECTION



DIMENSIONS: mm (In.)

SPECIFICATIONS	
Wire:	24 AWG
Temperature:	60° C
Voltage rating:	300VDC
Current rating:	0.5mA
Resistance:	0.15 Ω per meter

Date Last Revised: 3-11-05

Available from Mouser Electronics
1-800-346-6873
www.mouser.com

KC-300324

172-0171