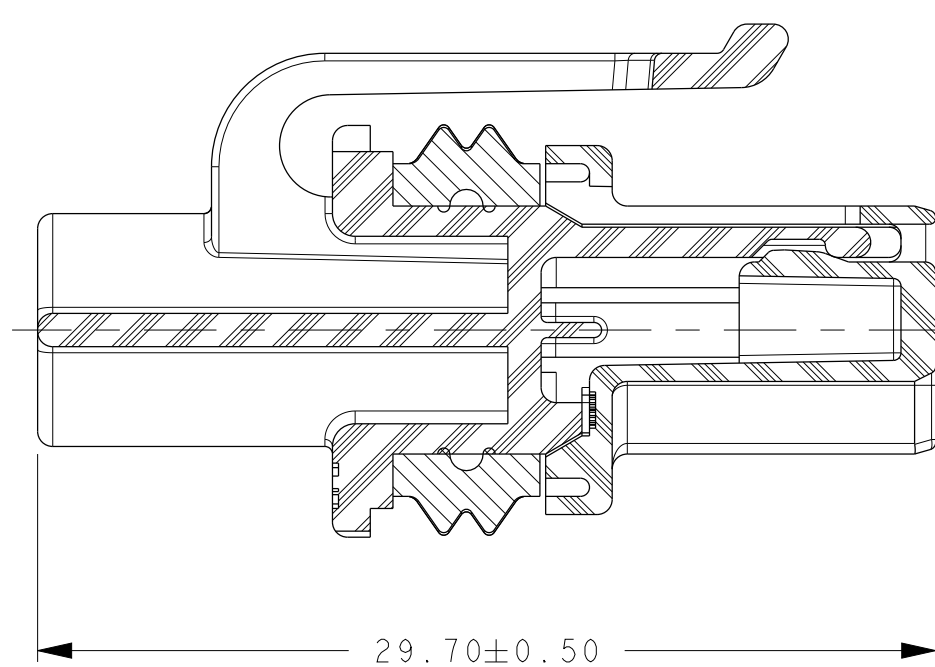
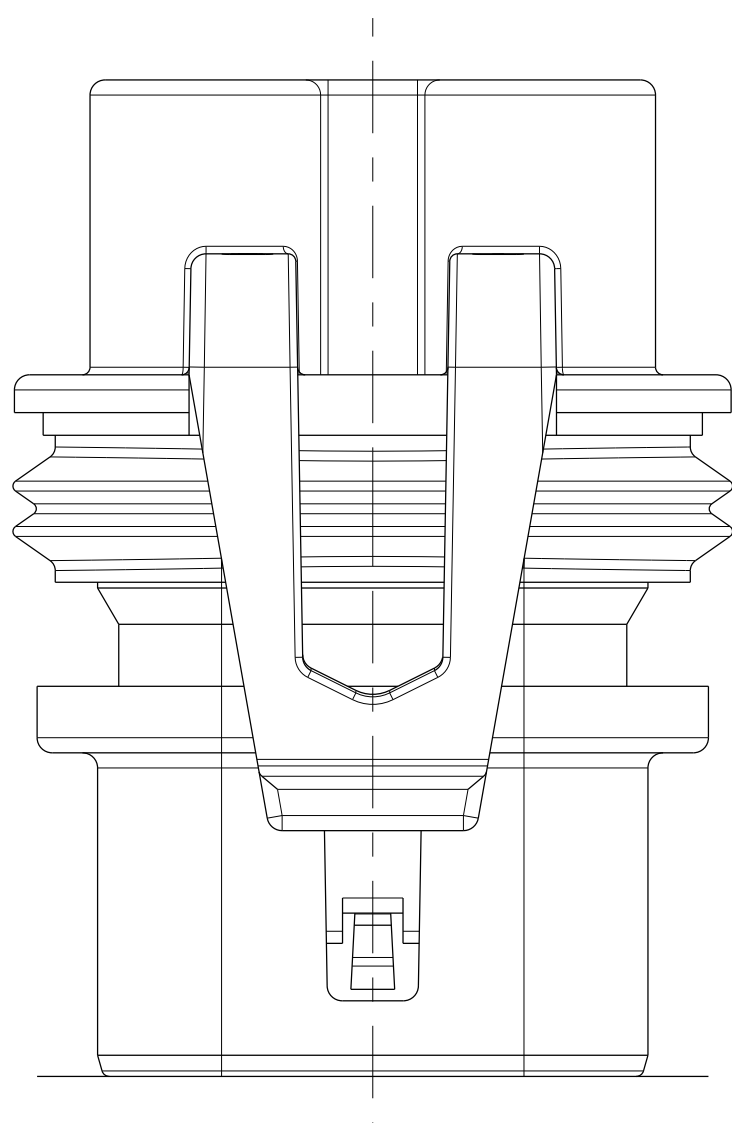
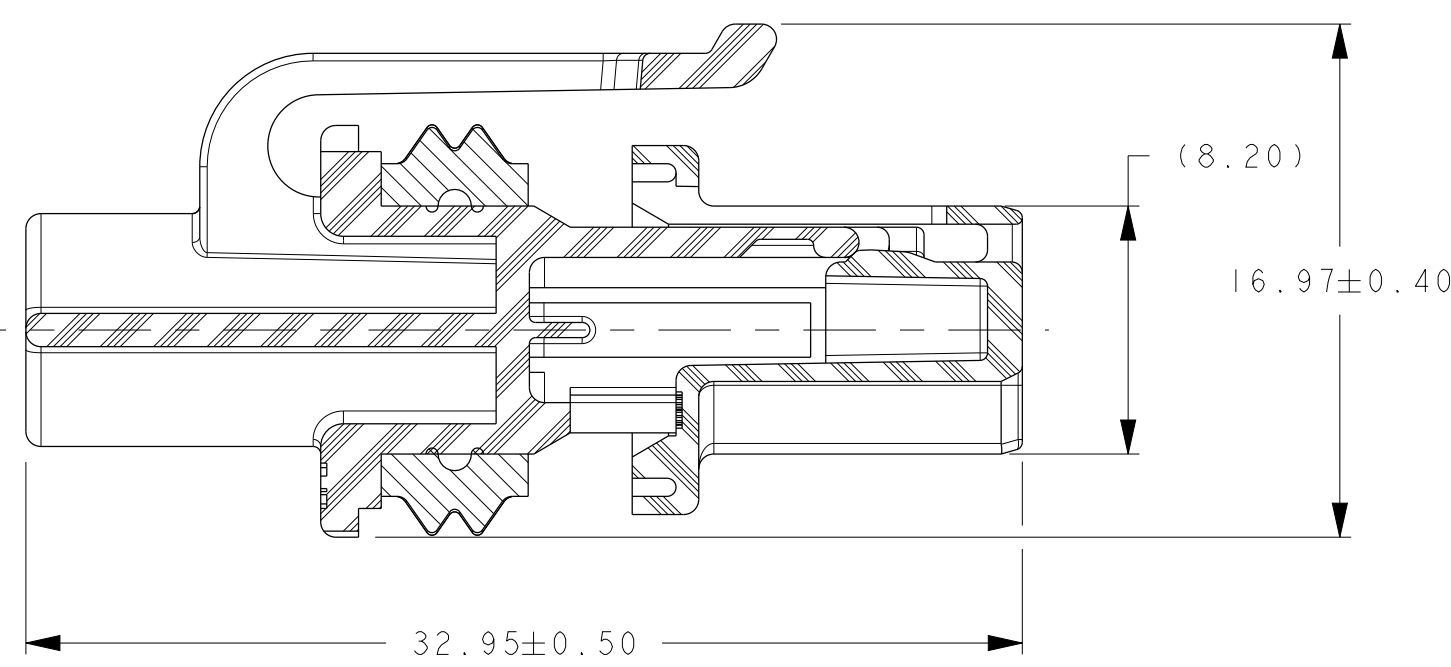


COMPONENTS LIST							
CONNECTOR PART NUMBER	CONFIGURATION	NHTSA DEFINITION (FOR REFERENCE ONLY)	CEI 60061-1 STANDARD (FOR REFERENCE ONLY)	PART NUMBERS			
				#1 TPA	#1 TPA COLOR	#2 HOUSING (BLACK)	#3 SEAL (BLUE)
F412210	9012 / HIR2	NHTSA-1998-3397-0003	7004-32-2	F612210	BROWN	F512210	240M041
F908310	9005 / HB3	NHTSA-1998-3397-0012	7004-31-2	F257210	BLACK		

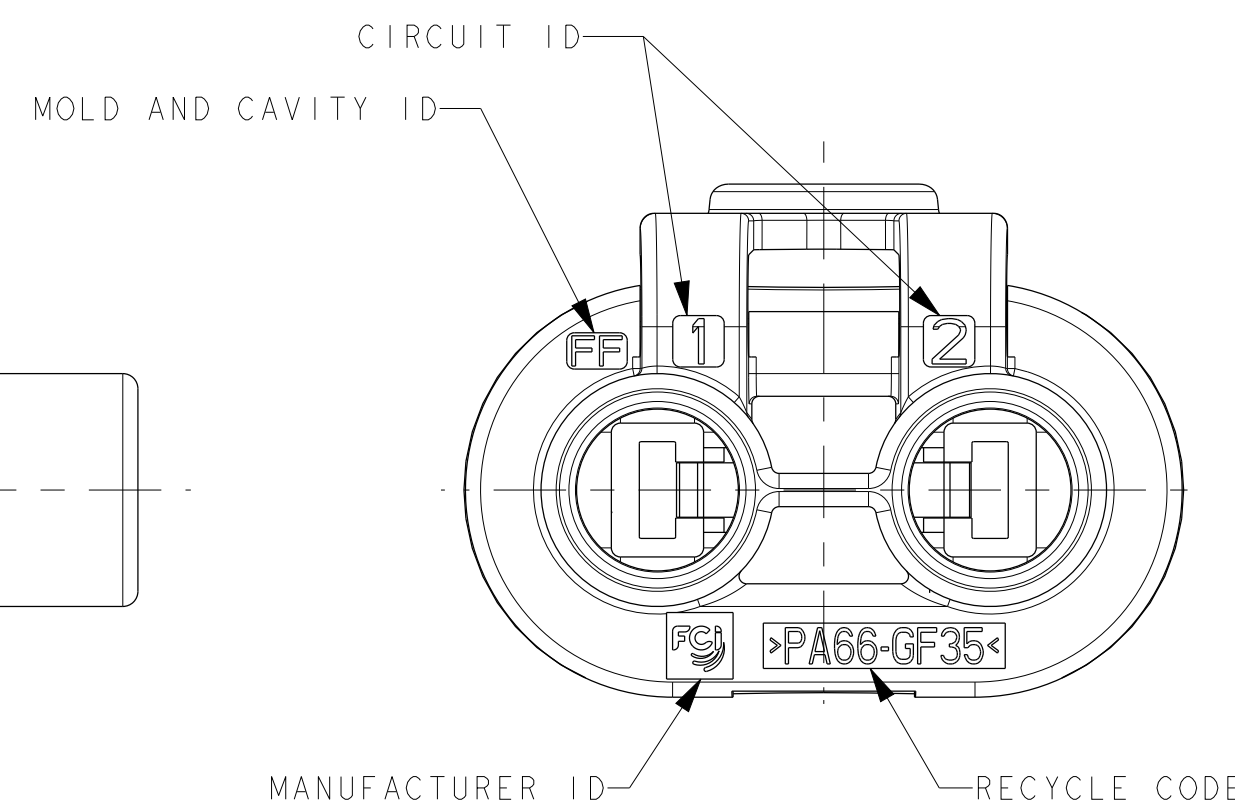
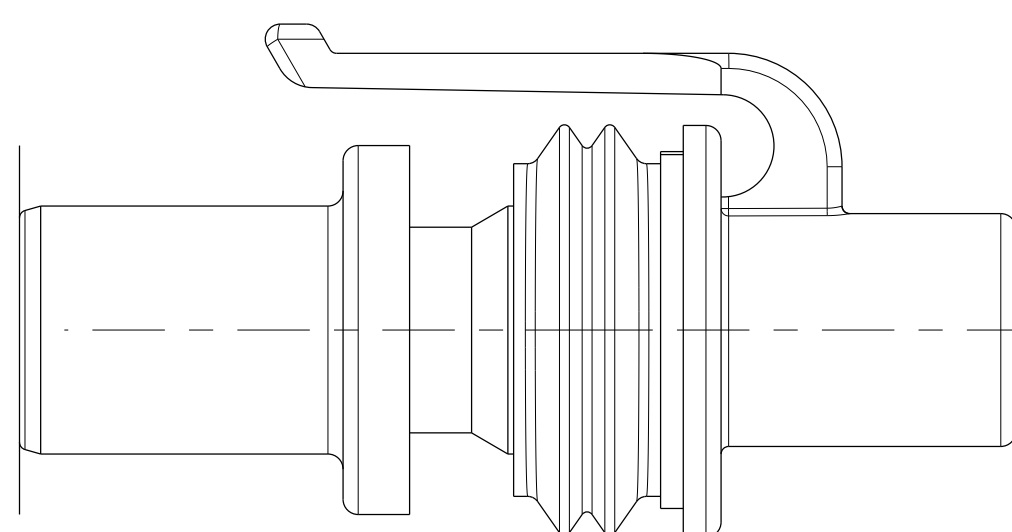
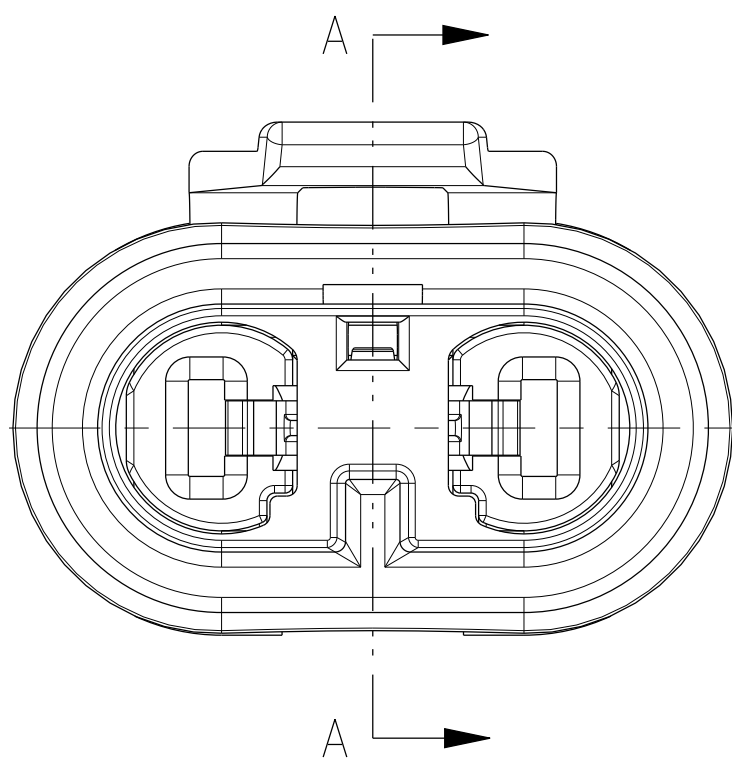
APPLICABLE COMPONENTS								
ITEM DESCRIPTION	PLATING OR COLOR	FORD COMP PART NUMBER	SUPPLIER	FCI / SUPPLIER PART NUMBER	GRIP CODE	WIRE SIZE	WIRE INSULATION DIAMETER RANGE	MATERIAL
APEX 2.8 FEMALE TERMINAL	SILVER	-	FCI	F820310	14	14 AWG 1.50-2.50mm ²	2.20mm-3.00mm	COPPER ALLOY
2.80mm SYSTEM CABLE SEAL ROUND	BLUE	8U5T-14603-NA	FCI (QSR)	F576000	-	14 AWG 1.50-2.0mm ²	2.20mm-2.80mm	SILICONE
2.80mm SYSTEM CABLE SEAL ROUND	YELLOW	BUST-10C930-HA	FCI	60994034	-	2.5mm ²	2.50mm-3.00mm	SILICONE



SECTION A-A
TPA SHOWN
IN LOCKED POSITION

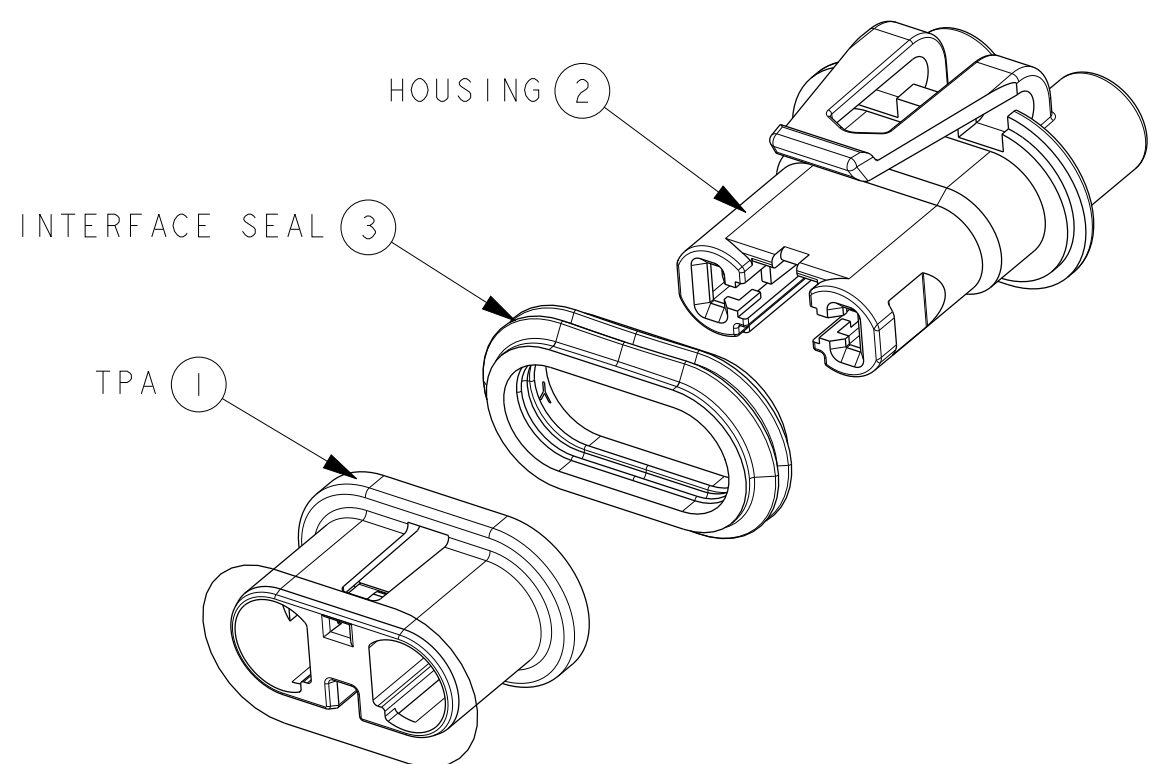


SECTION A - A
TPA SHOWN
IN OPEN POSITION

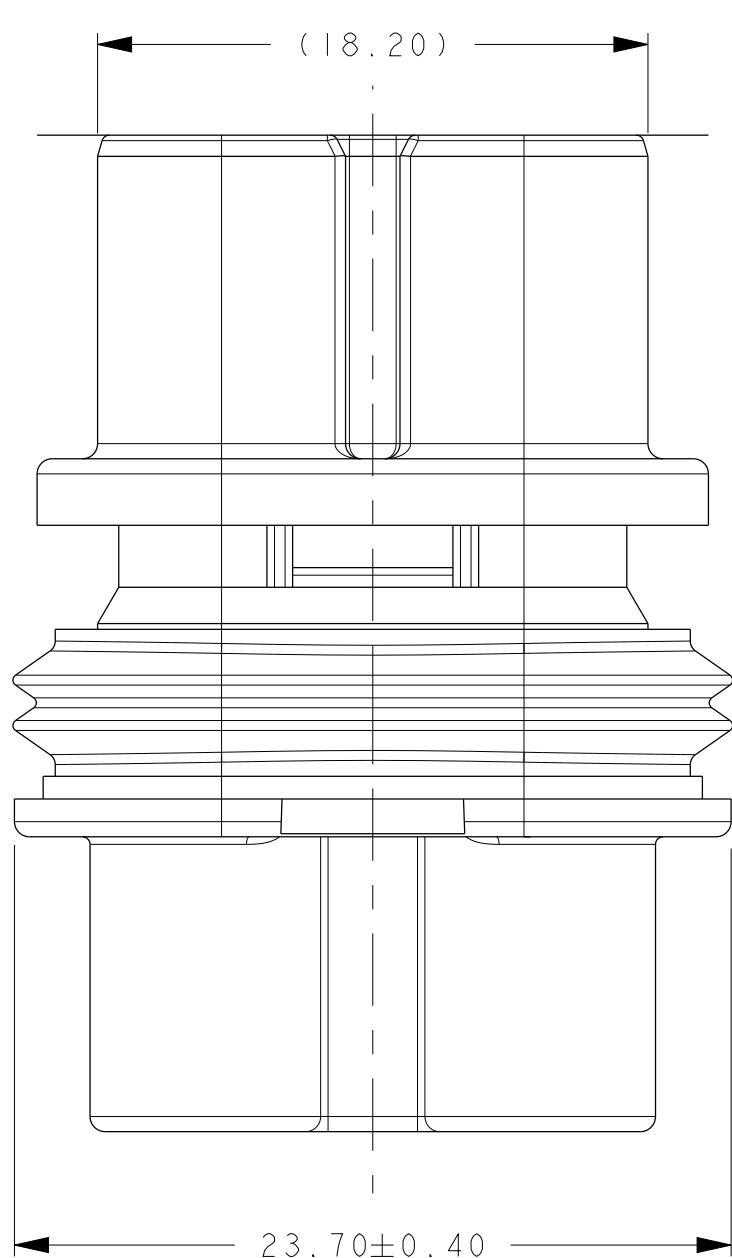


NOTES UNLESS OTHERWISE SPECIFIED:

1. BULB HEATING EFFECT IN LIGHTING APPLICATIONS MUST BE CONSIDERED BY THE SPECIFYING PARTY AS TO APPROPRIATE WIRE, CABLE SEAL, AND TERMINAL SELECTION AND FOR EACH LIGHTING SYSTEM'S VALIDATION TESTING. USE OF LARGEST CONDUCTOR WIRE WITH 150°C RATING IS STRONGLY RECOMMENDED IN ALL BULB OR OTHER SELF-HEATING APPLICATIONS.
2. TEST METHOD PER: GMW3191 VI / S3 / T4 (150°C) MATED TO HIR2 BULB, UNPOWERED (BULB HEATING EFFECT NOT INCLUDED) WITH THE FOLLOWING EXCEPTIONS:
 - GMW3191 4.29 SUBMERSION: @185°C
 - GMW3191 4.21 THERMAL AGING: CONNECTOR @150°C, BULB ENVELOPE @100°C, 2000 HOURS, 9012/HIR2 BULB POWERED @13.0VDC
3. CONNECTOR TO BE USED WITH THE FOLLOWING RANGE OF WIRE SIZES AND TYPES:
 - WIRE SIZES: 1.50mm² - 2.50mm² AND 14 AWG
 - OUTSIDE DIAMETER: 2.20MM MIN O.D. TO 3.00MM MAX O.D.
 - TYPE/STANDARD: MS-9502, ES-AU5T-1A348-AA Class 4, ISO6722 Class D
 - TEMP RATING: 150°C MINIMUMCONTACT FCI ENGINEERING REGARDING USE OF OTHER WIRE SIZES OR TYPES. SEE NOTE #1.
4. SEE FCI DRAWING C15004-CUST FOR TERMINAL CRIMPING REQUIREMENTS.
5. CONNECTOR IS MATE COMPATIBLE WITH BULBS/INTERFACES WHICH CONFORM TO THE STANDARDS SHOWN IN THE CHART.
6. ANNUAL QUALITY REQUIREMENTS:
 - IT IS PERMISSIBLE TO PERFORM CONTINUOUS CONFORMANCE PER FCI SPECIFICATION AQA-001 INSTEAD OF ANNUAL LAYOUT AND ANNUAL PV REQUIREMENTS OF QS-9000 SECTION 2 AND SAE/USCAR-2.



EXPLODED VIEW
SCALE 2:1



12-00611		-	INITIAL RELEASE					
ECN-NO.		ZONE		CHANGE DESCRIPTION				
PRODUCT SPEC.		PACKAGING SPEC.		APPLICATION SPEC.		THIS DRAWING AND ALL OTHER INFORMATION CONTAINED THEREIN IS PROPRIETARY AND THE PROPERTY OF FCI. This drawing may not be copied, reproduced or disclosed to any third party without the expressed written permission of FCI. FCI April 01/1999		
TOLERANCES		MATERIAL:		SURFACE FINISH		EAD SYSTEM		
CONTRACT NO.:		SEE TABLE		-		p/s / etc		
DO NOT MEASURE DRAWING		COLOUR:		-		DRAWING NUMBER		
DATE		TITLE		ECO Loc. Code		REV.		
NAME		PROJECT		ESR. NO.		STATE		
CREATED BY		2W Female Connector		PART NUMBER		APPROVAL		
MODIFIED BY		HIR2/HB3 BULB CONNECTOR		CAT. NO.		SHEET		
CREATED BY		PCC0783031		DOCUMENT UNDER PDS CONTROL NO MODIFICATION ALLOWED OUTSIDE		SCALE		
APPROVED BY		See Table		See Table		SCALE 4		