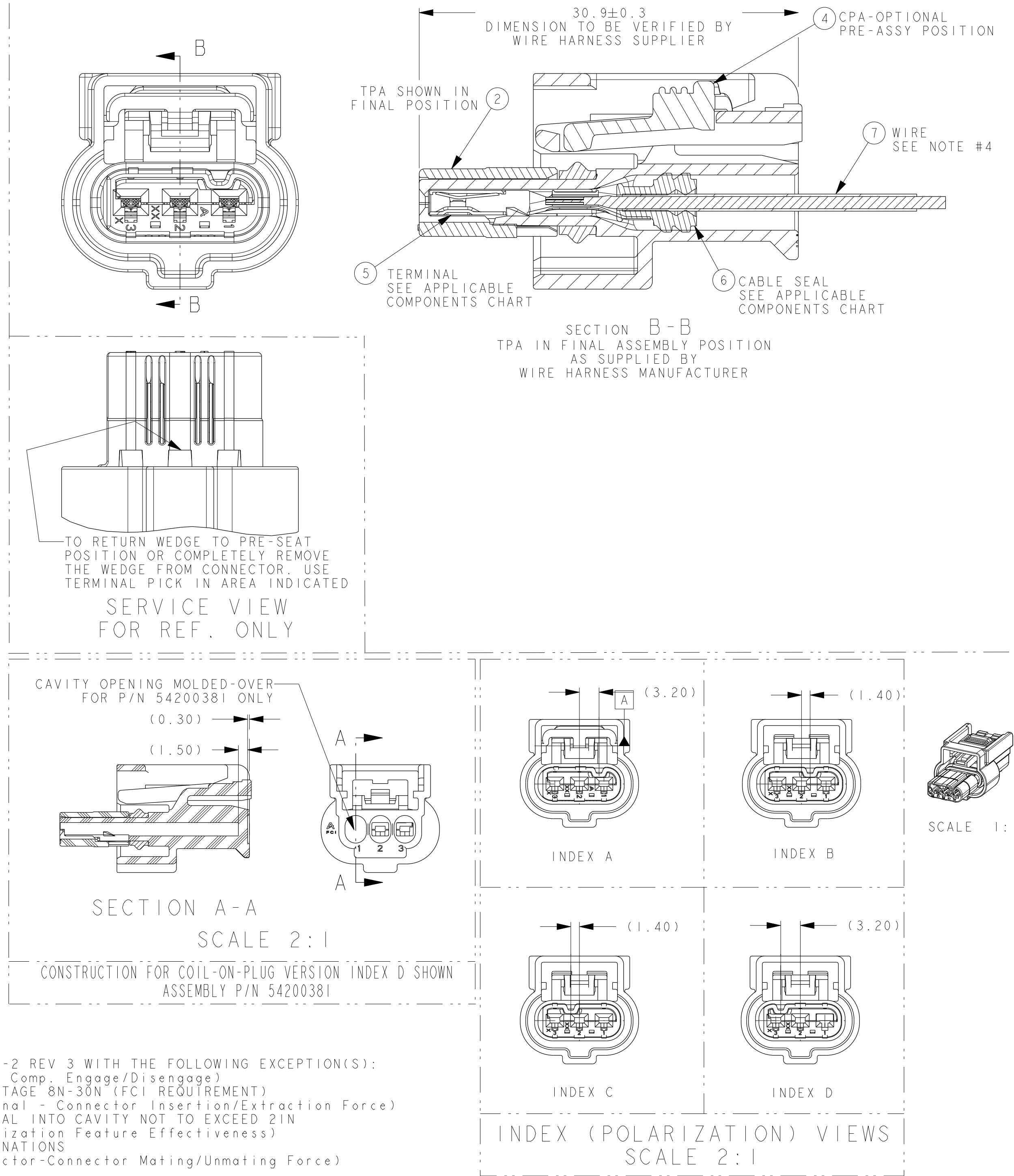


ASSEMBLY P/N'S	PCL	CONNECTOR TEMPERATURE CLASS PER SAE/USCAR-2 REV 3	KEY OPTIONS	COMPONENTS					
				INSULATOR (HOUSING)	TPA (DK. BLUE)	RING SEAL (BURNT ORANGE)	RING SEAL (DK. GREEN)	CPA (RED) (OPTIONAL)	
				ITEM-1	ITEM-2	ITEM-3	ITEM-4	ITEM-4	
54200378	H	4	A	BLACK	54200382	54200386		PA66 GF 35	
54200379	H	4	B	LT. GREY	54200383	54200387			
54200380	H	4	C	BROWN	54200384	54200388	54200392	NA	NA
54200381	H	4	D	DK. GREY	54200385	54200389			
F534300	H	3	A	BLACK	54200382	54200386	NA	C434300	NA
F519600	H	4	A	BLACK	54200382	54200386			
F500900	H	4	B	LT. GREY	54200383	54200387	54200392	NA	F752210
F600900	H	4	C	BROWN	54200384	54200388			
F177010	H	4	D	DK. GREY	54200385	54200389			

APPLICABLE COMPONENTS								
ITEM NO.	ITEM DESCRIPTION	PLATING OR COLOR	FORD COMP PART NUMBER (REFERENCE ONLY)	SUPPLIER	SUPPLIER COMP PART NUMBER	GRIP CODE	WIRE SIZE	MATERIAL/SPEC NO
5	1.20 SYSTEM TERMINAL	TIN	AU5T-14474-MA	FCI	54001864	18	16/18 AWG 0.75-1.25mm ²	COPPER ALLOY / NA
	1.20 SYSTEM TERMINAL	TIN	AU5T-14474-NA	FCI	54002006	20	20 AWG 0.50mm ²	COPPER ALLOY / NA
	1.20 SYSTEM TERMINAL	TIN/SILVER	AU5T-14474-PA	FCI	54001866	18	16/18 AWG 0.75-1.25mm ²	COPPER ALLOY / NA
	1.20 SYSTEM TERMINAL	TIN/SILVER	AU5T-14474-RA	FCI	54002007	20	20 AWG 0.50mm ²	COPPER ALLOY / NA
	1.20 SYSTEM TERMINAL	SILVER	AU5T-14474-SA	FCI	F731400	18	16/18 AWG 0.75-1.25mm ²	COPPER ALLOY / NA
	1.20 SYSTEM TERMINAL	SILVER	AU5T-14474-TA	FCI	F931400	20	20 AWG 0.50mm ²	COPPER ALLOY / NA
	1.20 SYSTEM TERMINAL	GOLD	AU5T-14474-UA	FCI	54001863	18	16/18 AWG 0.75-1.25mm ²	COPPER ALLOY / NA
6	1.20 SYSTEM TERMINAL	GOLD	AU5T-14474-VA	FCI	54002005	20	20 AWG 0.50mm ²	COPPER ALLOY / NA
	1.20 SYSTEM CABLE SEAL ROUND	RUST RED	AU5T-10C930-BA	FCI (QSR)	C528010 (A-0419)	-	16/18 AWG 1.00-1.25mm ²	SILICONE
	1.20 SYSTEM CABLE SEAL ROUND	BLUE	AU5T-14603-EA	FCI (QSR)	54200391 (A-0131)	-	20 AWG 0.50-0.75mm ²	SILICONE
	1.20 SYSTEM CAVITY PLUG	GREEN	AU5T-10C930-CA	FCI (QSR)	C628010 (A-0412)	-	-	SILICONE



NOTES:

- 1) VALIDATED TO SAE/USCAR-2 REV 3 WITH THE FOLLOWING EXCEPTION(S):
 - SECTION 5.4.5 (Misc. Comp. Engage/Disengage)
 - CPA LOCKED TO PRE-STAGE 8N-30N (FCI REQUIREMENT)
 - SECTION 5.4.1 (Terminal - Connector Insertion/Extraction Force)
 - INSERTION OF TERMINAL INTO CAVITY NOT TO EXCEED 2IN
 - SECTION 5.4.4 (Polarization Feature Effectiveness)
 - >160N FOR ALL COMBINATIONS
 - SECTION 5.4.2 (Connector-Connector Mating/Unmating Force)
 - >95N UNMATING FORCE.
- 2) VALIDATED TO THE FOLLOWING TEMP, VIBRATION, AND SEALING CLASSES:
 - GMW3191 SECTION 4.28 V4 T4 (155°C) WITH GOLD OR SILVER TERMINALS
 - SAE/USCAR-2 V3 T4 (150°C) WITH GOLD OR SILVER TERMINALS
 - SAE/USCAR-2 V3 T3 (125°C) WITH TIN/SILVER TERMINALS
 - SAE/USCAR-2 V2 T3 (125°C) WITH TIN TERMINALS
 - SAE/USCAR-2 SEALING S3 T4 (150°C) (ISO16750 9K EQUIVALENT)
- 3) CONNECTOR MAY BE USED WITH THE FOLLOWING TERMINALS:
 - FCI APEX 1.2 TERMINALS LISTED IN THE APPLICABLE COMPONENTS CHART ON THIS DRAWING WITH WIRE SIZES DEFINED IN NOTE 4.
 - SEE FCI DRAWING C18001-1-2-CUST FOR SPECIFIC TERMINAL DETAILS AND CRIMPING REQUIREMENTS
 - PLATING OF TERMINALS AND MATING DEVICE BLADES MUST BE COMPATIBLE
- 4) CONNECTOR SYSTEM HAS BEEN VALIDATED TO USCAR-2 REQUIREMENTS WITH THE FOLLOWING RANGE OF WIRE SIZES AND TYPES IN CONJUNCTION WITH APPROPRIATE COMPONENTS FOUND IN THE "APPLICABLE COMPONENTS" CHART:
 - WIRE SIZES: 0.50mm² - 1.25mm² and 20AWG - 16AWG
 - OUTSIDE DIAMETER: 1.40mm MIN - 2.41mm MAX
 - TYPE/STANDARD: MIL123-A, MS-8288, MS-9502, ES-AU5T-1A348-AA, ISO 6722
 - WIRE AND INSULATION TYPE MUST BE APPROPRIATE FOR TEMPERATURE CLASS & APPLICATION ENVIRONMENT
- 5) CONNECTOR IS MATE COMPATIBLE WITH DEVICES WHICH CONFORM WITH THE FOLLOWING USCAR INTERFACE SPECIFICATIONS:
 - 120-S-003-1-201 (WITH EWCAP-001 TYPE 120-T BLADES)
 - 120-S-003-1-202 (WITH EWCAP-001 TYPE 120-T BLADES)
- 6) ANNUAL QUALITY REQUIREMENTS:
 - IT IS PERMISSIBLE TO PERFORM CONTINUOUS CONFORMANCE PER FCI SPECIFICATION #AQA-001 INSTEAD OF ANNUAL LAYOUT AND ANNUAL PV REQUIREMENTS OF ISO TS16949 AND SAE/USCAR-2 REV 5. FOR TERMINAL TO CONNECTOR AND TPA TO CONNECTOR ONLY.
- 7) SOURCE ID, MOLD & CAVITY ID SIGNIFIES TOOL OWNERSHIP, FOR REFERENCE
- 8) (K) INDICATES IN-PROCESS INSPECTION FOR MANUFACTURING DIMENSIONS OR SPECIFICATIONS.

12-00271	CHART	F752210 WAS 54200016 (NEW CPA), PCL UPDATED TO 'H', 0.75-1.25mm ² WAS 0.75-1.50mm ²
	NOTES	NOTE #4 WAS CORRECTED (0.50-1.25mm ² WAS 0.50-1.50mm ²)
11970	N13	CORRECTED DIMENSION: 33.3±0.75 WAS 33.1±0.3
11903	CHART	APPLICABLE COMPONENTS CHART REVISED
	CHART	F519600 WAS F400900 (CORRECTION)
11891	CHART	ADDED KEY OPTION D WITH CPA (F177010)
11838	CHART	APPLICABLE COMPONENTS CHART REVISED
	NOTES	REVISED NOTE #5
	CHART	CORRECTED PCL CODES
10700	ALL	REVISED AND REDRAWN IN FCI - CUSTOMER FRAME.
----	D16	ASSY P/N F5434300 FOR FLUROSILICONE MATERIAL APPLICATION ADDED, CHART UPDATED WITH FLUROSILICONE SEAL P/N'S (NOT AVAILABLE).
ECN NO.	ZONE	CHANGE DESCRIPTION
PRODUCT SPEC.		
PACKAGING SPEC.		
APPLICATION SPEC.		
THIS DRAWING AND ALL OTHER INFORMATION CONTAINED THEREIN IS PROPRIETARY AND THE PROPERTY OF FCI. This drawing may not be copied, reproduced or disclosed to any third party without the expressed written permission of FCI. FCI April 10/1999		
USCAR-2 REV 5		
NONE		
NONE		
MATERIAL: (SEE TABLE)		
SURFACE: "FINISH"		
TOLERANCES		
2 PLACE DIMS ± 0.75		
2 PLACE DIMS ± 0.25		
CONTRACTOR N.		
SEE NOTE 5		
COLOUR: (SEE TABLE)		
DO NOT MEASURE DRAWING		
TOOL NO.		
A-126		
ECO Loc. Code		
AN		
TITLE		
CHART ASSEMBLY - 3-WAY FEMALE		
(12MM APEX SEALED CONNECTOR SYSTEM)		
PROJECT		
3 WAY SENSOMATE 12		
DOC NO.		
AMD30093		
CAT. NO.		
-		
DOCUMENT UNDER PDS CONTROL NO MODIFICATION ALLOWED OUTSIDE		
CREATED BY		
2003-07-26		
J. LAURIN		
CHECKED BY		
20130909		
Frank HOLLEN		
APPROVED BY		
20130909		
Mark MAJOR		
FILE NAME		
20130909		
JIM CAMPBELL		
K9002		
DRAWING NUMBER		
K29002		
H		
STATE		
SERIAL RELEASED		
PART NUMBER		
See Table		
REV.		
H		
SHEET		
1		
SCALE		
4.00		