

Molex's LED Array Holder, ideal for OEM light-fixture manufacturers, simplifies the LED installation process for Bridgelux energy-efficient ES Arrays and reduces installation time with compression contacts that eliminate hand soldering

LED technology has been proven to reduce the amount of energy consumed and is becoming a more reliable, efficient and user-friendly way for accommodating general illumination requirements. Using unmatched interconnect technology, Molex provides a solderless solution to mounting LED arrays into OEM designs.

LED array holders simplify the LED installation process by eliminating the need for hand or SMT soldering and expensive SMT equipment. The holders will allow customers to install LED arrays quickly into fixtures, enable field replacements and facilitate upgrades to current applications.

For additional information visit: www.molex.com/link/holderbridgeluxes.html

For information about additional Solid State Lighting (SSL) that complements Bridgelux and other array products visit: www.molex.com/industry/solidstatelighting.html

FEATURES AND BENEFITS

- Compression contacts to power array simplifies the LED installation process by eliminating hand soldering or expensive Surface Mount Technology (SMT) equipment and reduces installation time
- Double-ended wire-trap terminal to attach power source allows for wiring serial or parallel LED sequences, ensuring ease of array assembly
- Screw-mount attachment method for securing array to heat sink provides voltage isolation between LED and heat sink
- Snap-lock feature allows for attaching an optic or clear protective cover, enabling robust mechanical attachment and eliminates the need for mounting screws
- Releasable wire trap for rework or replacement allows for field serviceability
- High-temperature thermoplastic housing supports high heat-generating environments
- Overall form factor is fewer than 50.00mm (1.96") in diameter and is ideal for lamp and small-fixture applications, including MR16 or track lighting
- Clear LED protective cover is available with a snap-lock feature and the IP66 rated cover provides dust and impact protection; provides flexible design options
- Snap-lock feature for optional optic provides aiming of light source, per application

SPECIFICATIONS

Reference Information

Packaging: Tray
 UL File No.: Pending
 CSA File No.: Pending
 Designed In: Millimeters
 RoHS: Yes
 REACH: Yes

Electrical

Voltage (max.): 300V DC
 Current (max.):
 2.5A continuous; 3.5A max.
 Contact Resistance: 20 milliohms max.
 Dielectric Withstanding Voltage:
 300V DC
 Insulation Resistance:
 5000 milliohms min.

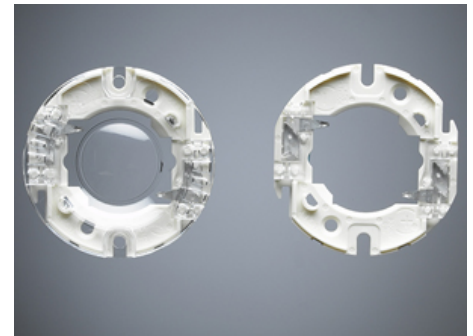
Mechanical

Wire Insertion Force: 5N (1.12lbf) max.
 Wire Pull Out Force:
 25N (5.62 lbf) max.
 Durability (min): 20 Cycles

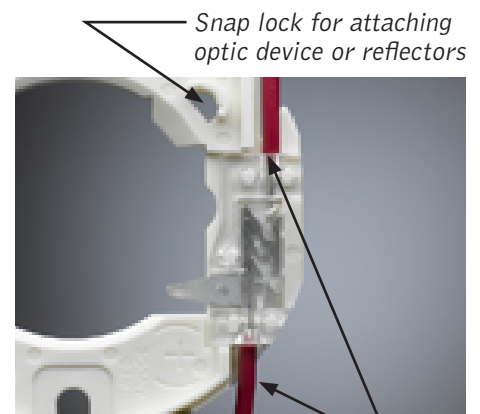
Physical

Housing: PA66 Nylon GF
 Contact:
 Copper (Cu), Nickel (Ni) and Tin (Si)
 Plating:
 Contact Area – Matte Tin (Si)
 Solder Tail Area – Matte Tin (Si)
 Underplating – Nickel (Ni)

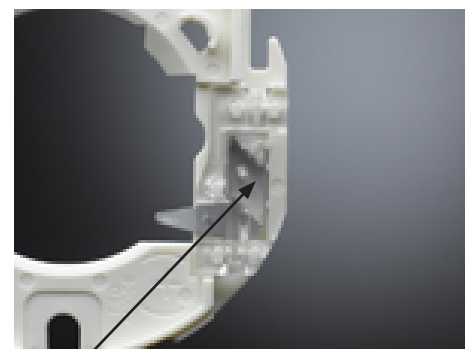
LED Array Holder for Bridgelux ES Arrays



Molex LED Array Holder



Multi-direction wire trap for installation



Visible release for removal of power-source wire

APPLICATIONS

- All general illumination applications
 - Downlighting
 - Track
 - Pendants
 - Linear
 - Architectural
 - Decorative
- Area Lighting
 - Roadways
 - Parking Lots
 - Wall Packs

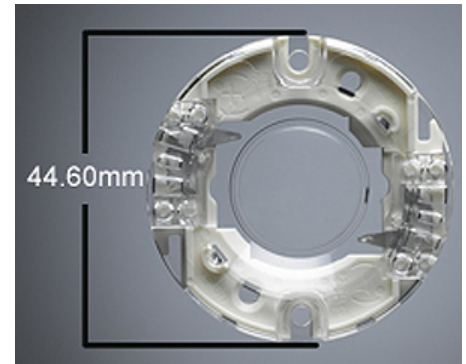


*Recessed downlighting
in residential and commercial buildings*

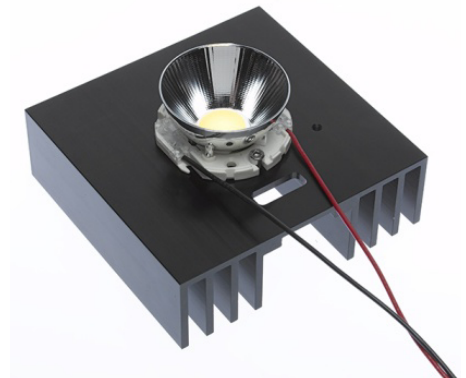


*Recessed downlighting
in commercial buildings*

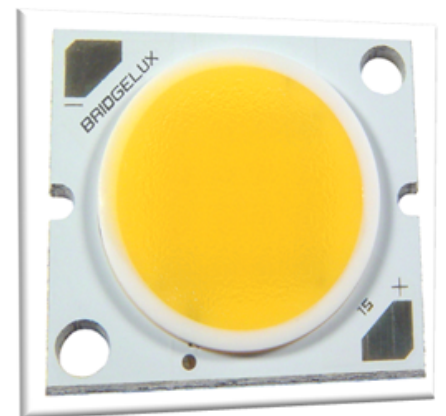
LED Array Holder for Bridgelux ES Arrays



Molex LED Array Holder



*Molex LED Array Holder with Optic
(optic sold separately from LEDIL)*



*Bridgelux ES Array
(sold separately from Bridgelux)*

ORDERING INFORMATION

Order No.	Plating	Clear Cover
180150-0000	Tin	No
180150-0001	Tin	Yes