


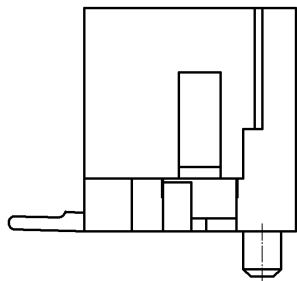
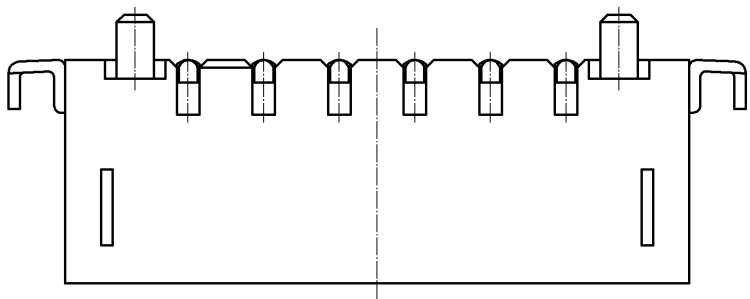
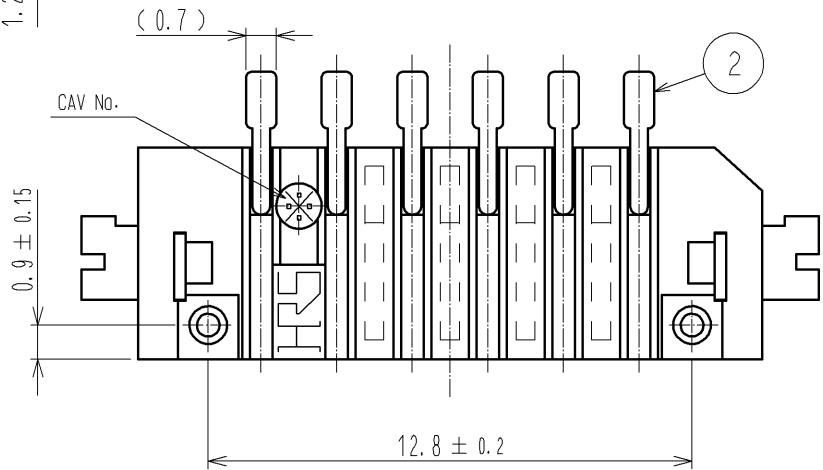
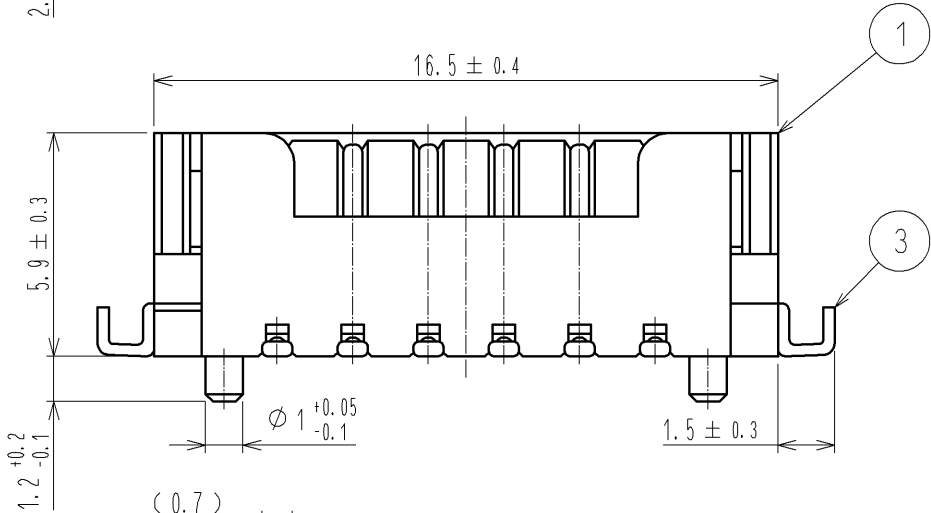
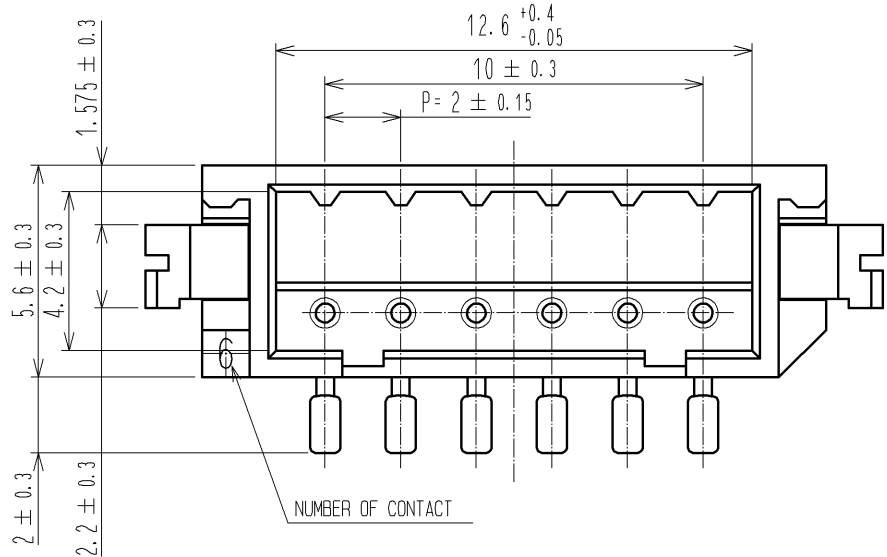
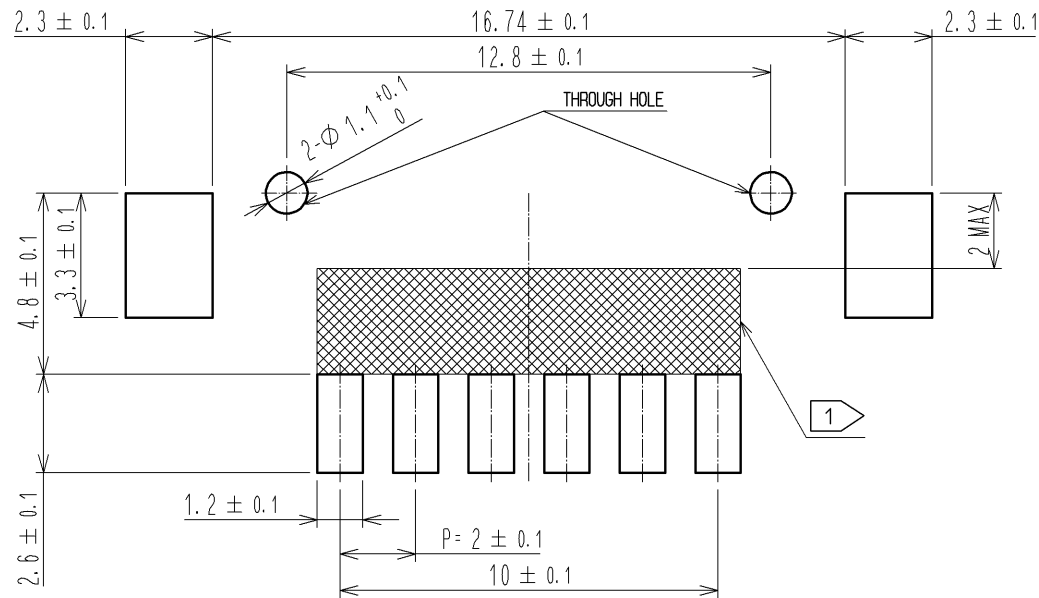


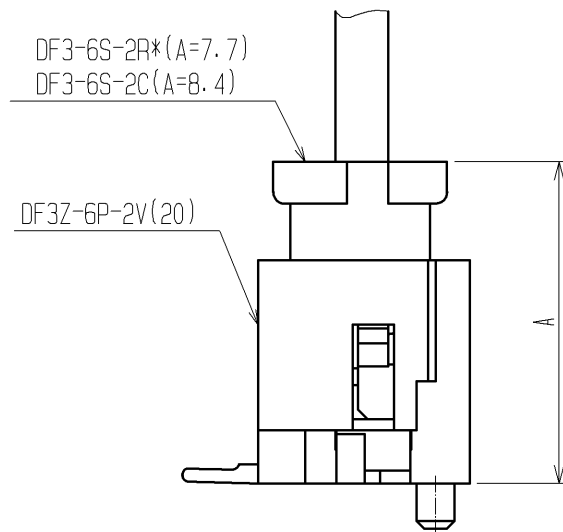
APPLICABLE STANDARD					
RATING	OPERATING TEMPERATURE RANGE	-30°C TO 85°C (NOTE 1)	STORAGE TEMPERATURE RANGE	-10°C TO 60°C	
	VOLTAGE	250V AC	CURRENT	3A	
SPECIFICATIONS					
ITEM	TEST METHOD		REQUIREMENTS		QT AT
CONSTRUCTION					
GENERAL EXAMINATION	VISUALLY AND BY MEASURING INSTRUMENT.		ACCORDING TO DRAWING.		X X
MARKING	CONFIRMED VISUALLY.				X X
ELECTRIC CHARACTERISTICS					
CONTACT RESISTANCE	100mA (DC OR 1000 Hz).		30mΩ MAX.	X	—
INSULATION RESISTANCE	500V DC.		1000MΩ MIN.	X	—
VOLTAGE PROOF	650V AC FOR 1 min.		NO FLASHOVER OR BREAKDOWN.	X	—
MECHANICAL CHARACTERISTICS					
MECHANICAL OPERATION	30 TIMES INSERTIONS AND EXTRACTIONS.		① CONTACT RESISTANCE: 30mΩ MAX. ② NO DAMAGE, CRACK OR LOOSENESS OF PARTS.	X	—
VIBRATION	FREQUENCY 10 TO 55 Hz, SINGLE AMPLITUDE 0.75 mm, AT 2 h, FOR 3 DIRECTIONS.		① NO ELECTRICAL DISCONTINUITY OF 1μs.	X	—
SHOCK	490 m/s ² DURATION OF PULSE 11 ms AT 3 TIMES FOR 3 DIRECTIONS.		② NO DAMAGE, CRACK OR LOOSENESS OF PARTS.	X	—
ENVIRONMENTAL CHARACTERISTICS					
RAPID CHANGE OF TEMPERATURE	TEMPERATURE -55→5 TO 35→85 →5 TO 35 °C TIME 30→10 TO 15→30 →10 TO 15min UNDER 5 CYCLES.		① CONTACT RESISTANCE: 30mΩ MAX. ② INSULATION RESISTANCE: 1000MΩ MIN. ③ NO DAMAGE, CRACK OR LOOSENESS OF PARTS.	X	—
DAMP HEAT (STEADY STATE)	EXPOSED AT 40 ± 2 °C, 90 TO 95 %, 96 h.		① CONTACT RESISTANCE: 30mΩ MAX. ② INSULATION RESISTANCE: 500MΩ MIN. ③ NO DAMAGE, CRACK OR LOOSENESS OF PARTS.	X	—
RESISTANCE TO SOLDERING HEAT	1) AUTOMATIC SOLDERING (REFLOW) 《REFLOW AREA》 MAX 240°C WITHIN 10 sec. MIN 220°C 10 sec TO 30 sec 《PREHEATING AREA》 150°C 100 sec. TO 120 sec. PUT THROUGH IN REFROW FUMACE TWICE. FEAVE IN AMBIENT TEMPERATURE AND HUMIDITY FOR 1 HOUR. CONNECTOR TEMPERATURE TO BE AMBIENT FOR SECOND REFLOW. 2) MANUAL SOLDERING SOLDERING IRON TEMPERATURE :290±10°C, SOLDERING TIME :3sec. NO STRENGTH ON CONTACT.		NO DEFORMATION OF CASE OF EXCESSIVE LOOSENESS OF THE TERMINALS.	X	—
SOLDERABILITY	SOLDERING TEMPERATURE :230 °C SOLDERING TIME :3sec.		A NEW UNIFORM COATING OF SOLDER SHALL COVER MINIMUM OF 95 % OF THE SURFACE BEING IMMersed.	X	—
	COUNT	DESCRIPTION OF REVISIONS	DESIGNED	CHECKED	DATE
REMARKS			APPROVED	TS. SAKATA	09. 01. 21
NOTE 1: INCLUDING THE TEMPERATURE RISE BY CURRENT.			CHECKED	TS. KUMAZAWA	09. 01. 21
			DESIGNED	KT. ISHII	09. 01. 21
Unless otherwise specified , refer to JIS C 5402.			DRAWN	KT. ISHII	09. 01. 21
Note QT:Qualification Test AT:Assurance Test X:Applicable Test			DRAWING NO.		ELC4-301291-01
	SPECIFICATION SHEET		PART NO.	DF3Z-6P-2V (20)	
	HIROSE ELECTRIC CO., LTD.		CODE NO.	CL543-1032-1-20	 1/1




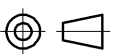



3 RECOMMENDED PATTERN

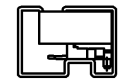


MATED CONNECTORS



- NOTES 1 IF THERE IS PATTERN ON  PART, THERE IS A POSSIBILITY THAT IT WILL MAKE CONTACT WITH THE LEADS.
2 LEAD CO-PLANARITY INCLUDE REINFORCED METAL FITTINGS SHALL BE 0.1mm MAX.
3 RECOMMENDED THICKNESS OF CREAM SOLDER PASTE: 0.15mm~0.2mm
OPEN AREA RATIO: 100%

			5	S. PVC	GRAY			
2	BRASS	SURFACE:TIN PLATED 1μm min (UNDER PLATING)COPPER PLATED 0.5μm min	4	RIGID POLYVINYLCHLORIDE	ELECTROSTATIC PROTECTION, CLEAR			
			3	BRASS	SURFACE:TIN PLATED 1μm min (UNDER PLATING)NICKEL PLATED 1μm min			
1	POLYAMIDE	BEIGE, UL94V-0						
NO.	MATERIAL	FINISH , REMARKS	NO.	MATERIAL	FINISH , REMARKS			
UNITS mm		SCALE 5 : 1		COUNT	DESCRIPTION OF REVISIONS	DESIGNED	CHECKED	DATE
 HIROSE ELECTRIC CO., LTD.		APPROVED : TS. SAKATA	09.01.28	DRAWING NO. EDC3-301291-01				
		CHECKED : TS. KUMAZAWA	09.01.28	PART NO. DF3Z-6P-2V(20)				
		DESIGNED : KT. ISHII	09.01.28	CODE NO. CL543-1032-1-20				
		DRAWN : KT. ISHII	09.01.28	 1/2				

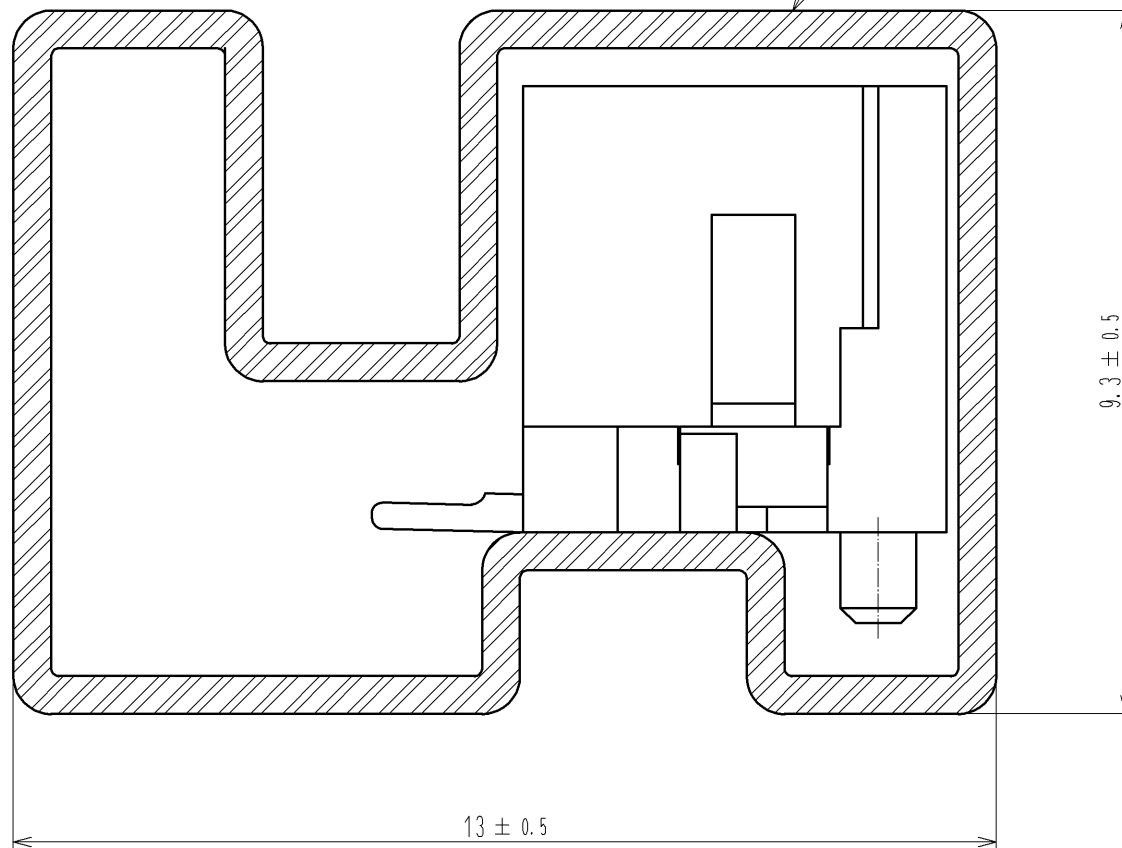


5



B-B (10 : 1)

4



- NOTES 4 .NUMBER OF CONNECTERS PER A MAGAZINE CASE SHALL BE IN ACCORDANCE WITH 23.
5 .THESE CONNECTORS SHALL BE ON SALED IN ACCORDANCE WITH THE MULTIPLE QUANTITY ON 23.

HRS

DRAWING NO.	EDC3-301291-01
PART NO.	DF3Z-6P-2V(20)
CODE NO.	CL543-1032-1-20

△	2/2
---	-----