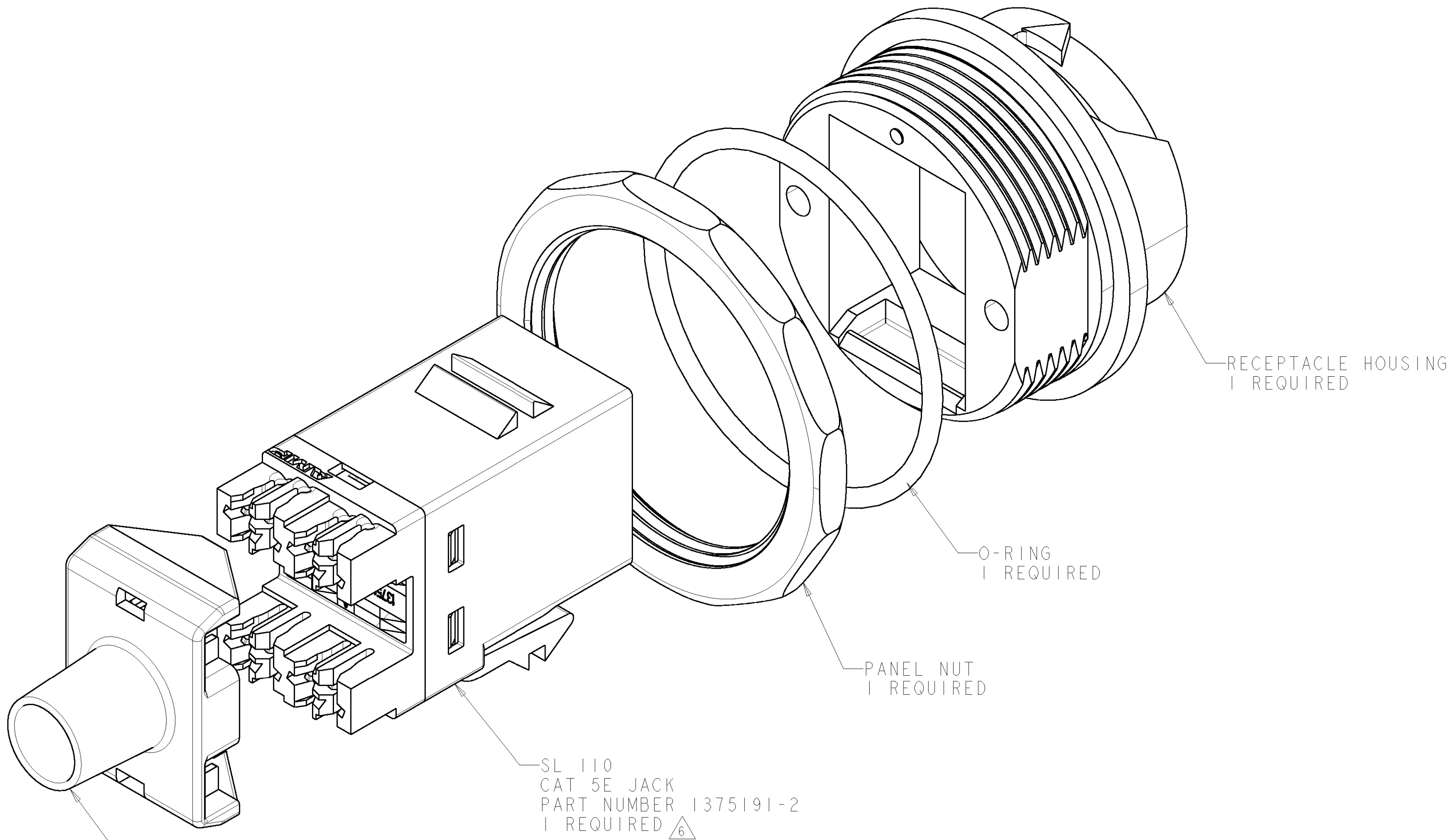
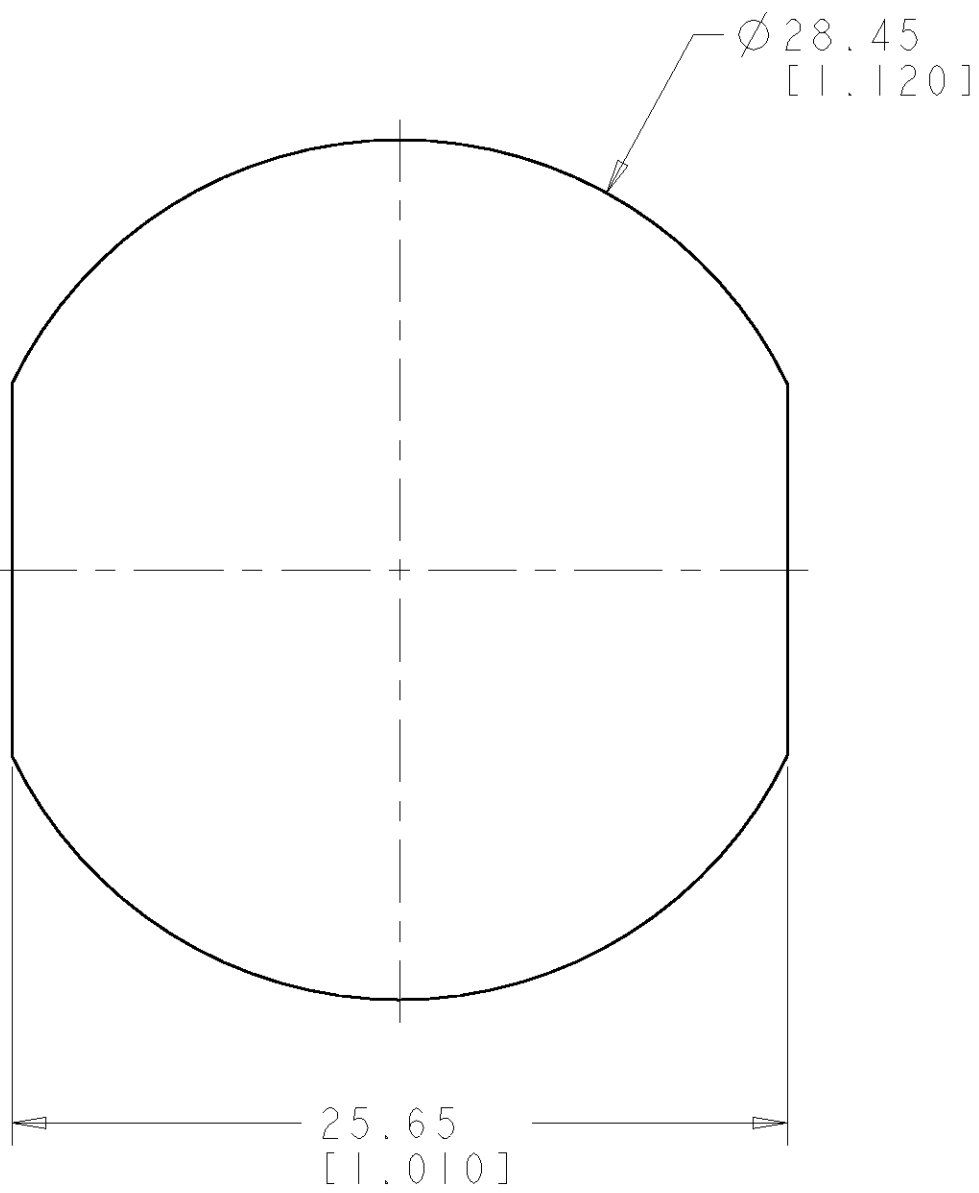


LOC	DIST	REVISIONS					
HM	00	P	LTR	DESCRIPTION	DATE	DWN	APVD
			A	RLSD - NSD03-078	21NOV03	LH	CD
			B	REV: EC 0B40-0023-04	17FEB04	GG	MD
			C	REV: EC 0B40-0092-04	12APR04	GG	MD
			D	REV - ECN 0B40-0132-04	24MAY2004	LS	MD

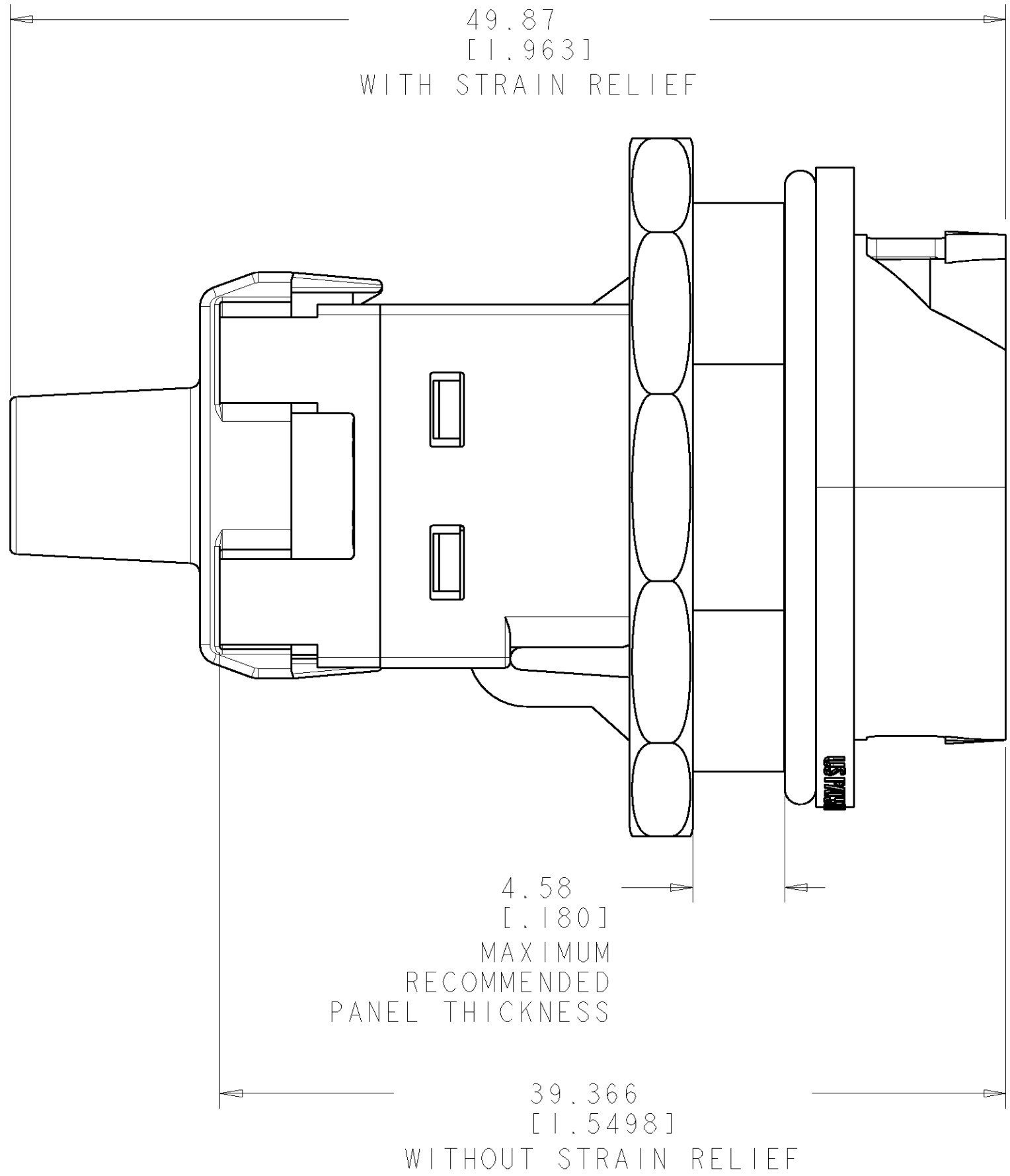


1. MATERIAL: JACK HOUSING - POLYPHENYLENE OXIDE, 94V-0 RATED.
ARRAY TRAY - PBT POLYESTER.
110 BLOCK AND STRAIN RELIEF - POLYCARBONATE.
JACK CONTACTS - BERYLLIUM COPPER, PLATED WITH 1.27µm [0.000050] MINIMUM THICK GOLD IN LOCALIZED AREA AND 3.81µm [0.000150] MINIMUM THICK TIN-LEAD IN SOLDER AREA OVER 1.27µm [0.000050] MINIMUM THICK NICKEL UNDERPLATE.
IDC TERMINALS - PHOSPHOROUS BRONZE, PLATED WITH 3.81µm [0.00015] MINIMUM THICK BRIGHT TIN-LEAD OVER 1.27µm [0.00005] MINIMUM THICK NICKEL UNDERPLATE.
RECEPTACLE HOUSING - PBT, 94V-0 RATED.
O-RING SEALS - BUNA.
PANEL NUT - NICKEL PLATED BRASS.
2. SL 110 JACK WILL TERMINATE 22-24 AWG SOLID CONDUCTORS AND 24 AWG STRANDED CONDUCTORS, 1.14 [0.045] MAXIMUM INSULATION DIAMETER.

3. SUGGESTED PANEL CUTOUT OPENING.
4. PACKAGED ONE MODULAR JACK, ONE STRAIN RELIEF, ONE O-RING, ONE ETHERSEAL HOUSING, AND ONE PANEL NUT, PER POLYBAG. KIT SHIPPED NOT ASSEMBLED.
5. ASSEMBLY SHIPPED WITH STRAIN RELIEF NOT LATCHED AT REAR OF JACK HOUSING ASSEMBLY.
6. REFER TO INSTRUCTION SHEET 408-8417 FOR JACK TERMINATION ASSEMBLY INSTRUCTIONS AND 408-8875 FOR ETHERSEAL RECEPTACLE KIT ASSEMBLY INSTRUCTIONS.



RECOMMENDED PANEL CUTOUT
SCALE 4:1 3



BLACK		1479563-2	
COLOR		PART NUMBER	
DWN		19NOV03	
CHK		21NOV03	
APVD		21NOV03	
NAME		KIT, ETHERSEAL, UTP, CAT 5E	
PRODUCT SPEC		SL 110 JACK, FRONT MOUNT, BLACK	
APPLICATION SPEC		-	
MATERIAL		-	
FINISH		-	
WEIGHT		-	
CUSTOMER DRAWING		-	
SCALE		4:1	
SHEET		1 OF 1	
REV		D	