

RENESAS/CEL Optocouplers

RoHS Compliant This product is RoHS compliant.



California Eastern Laboratories

RENESAS/CEL SINGLE TRANSISTOR OPTOCOUPLEDERS

Applications:

- Can be used as an interface circuit for various instrumentations and control equipment in the following:
 - AC line/digital logic
 - Twisted pair line receiver
 - Digital logic/digital logic
 - Telephone/telegraph line receiver

Features:

- High isolation voltage
- High current transfer ratio
- Low cost
- High speed switching

Safety Standards:

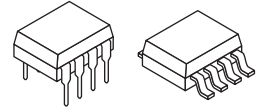
- UL = UL Recognized (UL File No: E72422(S))
- UL/BSI = UL Recognized & BSI Approved
- UL File No.: E72422(S) / BSI Approved No.: 7112/7420



LEAD-FREE



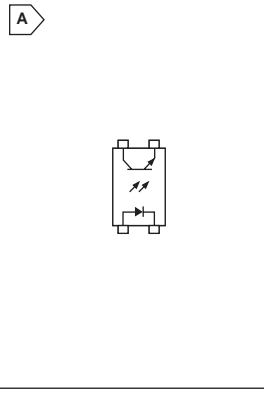
RoHS Compliant



DC Optocouplers, Low Speed Logic Applications

◆ Surface Mount For quantities greater than listed, call for quote.

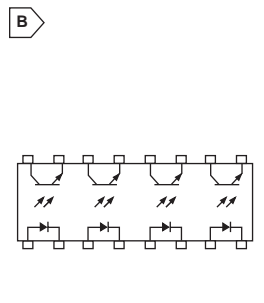
MOUSER STOCK NO.	CEL Part No.	Fig.	Package	Safety Standard	IF (mA)	VCEO	VECO	Typical Rise/Fall t_r / t_f (μs)	Current Transfer Ratio %	Price Each			
										1	10	100	500
551-PS2501-1-A	PS2501-1-A	A	DIP-4	UL	80	80	7.0	3.0/5.0	80 to 600	.38	.32	.28	.24
551-PS2501-1-H-A	PS2501-1-H-A	A	DIP-4	UL	80	80	7.0	3.0/5.0	80 to 160	.33	.28	.24	.21
551-PS2501-1-L-A	PS2501-1-L-A	A	DIP-4	UL	80	80	7.0	3.0/5.0	200 to 400	.33	.28	.24	.21
551-PS2501A-1-A	PS2501A-1-A	A	DIP-4	UL	30	70	5.0	5.0/7.0	50 to 400	.32	.28	.24	.20
◆ 551-PS2501L-1-A	PS2501L-1-A	A	DIP-4	UL	80	80	7.0	3.0/5.0	80 to 600	.46	.39	.34	.29
◆ 551-PS2501L-1-H-A	PS2501L-1-H-A	A	DIP-4	UL	80	80	7.0	3.0/5.0	200 to 400	.44	.37	.32	.28
551-PS2501-4-A	PS2501-4-A	B	DIP-16	UL	80	80	7.0	3.0/5.0	80 to 600	1.76	1.51	1.30	1.11
◆ 551-PS2501L-4-A	PS2501L-4-A	B	DIP-16	UL	80	80	7.0	3.0/5.0	80 to 600	1.84	1.58	1.36	1.16
◆ 551-PS2701-1-A	PS2701-1-A	A	SOP-4	UL/BSI	50	40	6.0	3.0/5.0	50 to 300	.51	.43	.38	.32
◆ 551-PS2501AL-1-A	PS2501AL-1-A	A	DIP-4	UL	30	70	5.0	3.0/5.0	50 to 400	.38	.32	.28	.24
◆ 551-PS2701A-1-A	PS2701A-1-A	A	SOP-4	UL	30	70	5.0	5.0/7.0	50 to 300	.43	.37	.32	.27
◆ 551-PS2801C-1-A	PS2801C-1-A	A	DIP-4	UL	30	80	5.0	5.0/7.0	50 to 400	.50	.46	.37	.32
◆ 551-PS2801-1-A	PS2801-1-A	A	SSOP-4	UL/BSI	50	80	6.0	3.0/5.0	80 to 600	.95	.85	.715	.615
◆ 551-PS2801C-4-A	PS2801C-4-A	B	SSOP-16	UL	30	80	5.0	5.0/7.0	50 to 400	2.26	2.10	1.68	1.51
◆ 551-PS2801A-1-A	PS2801A-1-A	A	SSOP-4	UL	30	70	5.0	5.0/7.0	50 to 400	.80	.69	.595	.51
◆ 551-PS2801-4-A	PS2801-4-A	B	SSOP-16	UL/BSI	50	80	6.0	3.0/5.0	80 to 600	3.20	2.63	2.48	2.11
◆ 551-PS2801A-4-A	PS2801A-4-A	B	SSOP-16	UL	30	70	5.0	5.0/7.0	50 to 400	3.60	3.20	2.67	2.26



AC Optocouplers High Isolation Voltage

◆ Surface Mount For quantities greater than listed, call for quote.

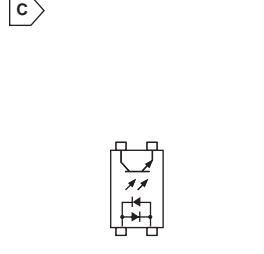
MOUSER STOCK NO.	CEL Part No.	Fig.	Package	Safety Standard	IF (mA)	VCEO	VECO	Typical Rise/Fall t_r / t_f (μs)	Current Transfer Ratio %	1	10	100	500
551-PS2505-1-A	PS2505-1-A	C	DIP-4	UL	80	80	7.0	3.0/5.0	80 to 600	.39	.33	.29	.24
◆ 551-PS2505L-1-A	PS2505L-1-A	C	DIP-4	UL	80	80	7.0	3.0/5.0	80 to 600	.54	.46	.40	.34
551-PS2505-4-A	PS2505-4-A	D	DIP-16	UL/BSI	80	80	7.0	3.0/5.0	80 to 600	2.43	2.10	1.80	1.53
◆ 551-PS2505L-4-A	PS2505L-4-A	D	DIP-16	UL	80	80	7.0	3.0/5.0	80 to 600	2.30	1.80	1.70	1.45
◆ 551-PS2705-1-A	PS2705-1-A	C	SOP-4	UL/BSI	50	40	6.0	3.0/5.0	50 to 300	.88	.77	.612	.475
◆ 551-PS2705A-1-A	PS2705A-1-A	C	SOP-4	UL	30	70	5.0	5.0/7.0	50 to 400	.61	.51	.451	.344
◆ 551-PS2805-1-A	PS2805-1-A	C	SSOP-4	UL/BSI	50	80	6.0	3.0/5.0	80 to 600	.77	.68	.59	.48
◆ 551-PS2805C-4-A	PS2805C-4-A	C	DIP-4	UL	30	80	5.0	5.0/7.0	50 to 400	2.76	2.55	2.04	1.83
◆ 551-PS2805-4-A	PS2805-4-A	D	SSOP-16	UL/BSI	50	80	6.0	3.0/5.0	80 to 600	4.98	4.22	3.81	3.38
◆ 551-PS2805A-4-A	PS2805A-4-A	D	SSOP-16	UL	30	70	5.0	5.0/7.0	50 to 400	3.68	2.86	2.58	2.30



Optocouplers Optimized For Analog Feedback

◆ Surface Mount For quantities greater than listed, call for quote.

DC Devices													
MOUSER STOCK NO.	CEL Part No.	Fig.	Package	Safety Standard	IF (mA)	VCEO	VECO	Typical Rise/Fall t_r / t_f (μs)	Current Transfer Ratio %	1	10	100	500
◆ 551-PS2711-1-A	PS2711-1-A	A	SOP-4	UL	50	40	5.0	4.0/5.0	100 to 400	.67	.60	.50	.39
◆ 551-PS2711-1-M-A	PS2711-1-M-A	A	SOP-4	UL	50	40	5.0	4.0/5.0	100 to 200	.56	.48	.42	.35
◆ 551-PS2811-1-A	PS2811-1-A	A	SSOP-4	UL	50	40	5.0	4.0/5.0	100 to 400	1.00	.90	.741	.582
◆ 551-PS2811-1-M-A	PS2811-1-M-A	A	SSOP-4	UL	50	40	5.0	4.0/5.0	100 to 200	1.00	.90	.741	.582
◆ 551-PS2811-4-A	PS2811-4-A	B	SSOP-16	UL	50	40	5.0	4.0/5.0	100 to 400	4.56	3.86	3.49	2.73
◆ 551-PS2911-1-A	PS2911-1-A	A	MiniFlat-4	UL	50	40	5.0	5.0/10.0	100 to 400	1.18	1.05	.88	.75
◆ 551-PS2911-1-K-A	PS2911-1-K-A	A	MiniFlat-4	UL	50	40	5.0	5.0/10.0	200 to 400	1.15	.93	.80	.68
AC Devices													
MOUSER STOCK NO.	CEL Part No.	Fig.	Package	Safety Standard	IF (mA)	VCEO	VECO	Typical Rise/Fall t_r / t_f (μs)	Current Transfer Ratio %	1	10	100	500
◆ 551-PS2715-1-A	PS2715-1-A	C	SOP-4	UL	50	40	5.0	4.0/5.0	100 to 400	.93	.83	.698	.589
◆ 551-PS2815-1-A	PS2815-1-A	C	SSOP-4	UL	50	40	5.0	4.0/5.0	100 to 400	1.08	.94	.73	.67
◆ 551-PS2815-4-A	PS2815-4-A	D	SSOP-16	UL	50	40	5.0	4.0/5.0	100 to 400	4.42	3.44	3.10	2.76
◆ 551-PS2915-1-A	PS2915-1-A	C	MiniFlat-4	UL	50	40	5.0	5.0/10.0	100 to 400	1.46	1.31	1.11	.96



Optocouplers

◆ Surface Mount For quantities greater than listed, call for quote.

DC Devices, High Isolation Voltage													
MOUSER STOCK NO.	CEL Part No.	Fig.	Package	Safety Standard	IF (mA)	VCEO	VECO	Typical Rise/Fall t_r / t_f (μs)	Current Transfer Ratio %	1	10	100	500
551-PS2561-1-A	PS2561-1-A	A	DIP-4	UL/BSI	80	80	7.0	3.0/5.0	80 to 400	.51	.44	.38	.32
551-PS2561A-1-A	PS2561A-1-A	A	DIP-4	UL/BSI	30	70	5.0	5.0/7.0	50 to 300	.41	.35	.30	.26
◆ 551-PS2561L-1-H-A	PS2561L-1-H-A	A	DIP-4	UL/BSI	80	80	7.0	3.0/5.0	80 to 160	.46	.39	.34	.29
◆ 551-PS2561AL-1-H-A	PS2561AL-1-H-A	A	DIP-4	UL/BSI	30	70	5.0	5.0/7.0	50 to 300	.45	.38	.33	.28
AC Devices													
MOUSER STOCK NO.	CEL Part No.	Fig.	Package	Safety Standard	IF (mA)	VCEO	VECO	Typical Rise/Fall t_r / t_f (μs)	Current Transfer Ratio %	1	10	100	500
551-PS2565-1-A	PS2565-1-A	C	DIP-4	UL/BSI	80	80	7.0	3.0/5.0	80 to 400	.62	.53	.46	.39
◆ 551-PS2565L-1-A	PS2565L-1-A	C	DIP-4	UL/BSI	80	80	7.0	3.0/5.0	80 to 400	.65	.56	.48	.41



High Speed and High VCE Optocouplers

◆ Surface Mount For quantities greater than listed, call for quote.

MOUSER STOCK NO.	CEL Part No.	Fig.	Package	Safety Standard	IF (mA)	VCEO	VECO	Typical Rise/Fall t_r / t_f (μs)	Current Transfer Ratio %	1	10	100	500
551-PS2503-1-A	PS2503-1-A	A	DIP-4	UL/CSA	80	40	0.6	30/30	100 to 400	.84	.72	.62	.53
◆ 551-PS2503L-1-A	PS2503L-1-A	A	DIP-4	UL/CSA	80	40	0.6	30/30	100 to 400	.89	.77	.66	.56
551-PS2513-1-A	PS2513-1-A	A	DIP-4	UL	60	120	6.0	3.0/4.0	25 to 100	.64	.55	.47	.40
◆ 551-PS2703-1-A	PS2703-1-A	A	SOP-4	UL/BSI	50	120	6.0	10/10	50 to 400	.59	.51	.44	.37
◆ 551-PS2703-1-K-A	PS2703-1-K-A	A	SOP-4	UL/BSI	50	120	6.0	10/10	200 to 400	.53	.45	.39	.33
◆ 551-PS2703-1-M-A	PS2703-1-M-A	A	SOP-4	UL/BSI	50	120	6.0	10/10	50 to 150	.68	.57	.501	.424
◆ 551-PS2913-1-A	PS2913-1-A	A	MiniFlat-4	UL	50	120	6.0	10/10	50 to 200	1.25	1.08	.93	.79
◆ 551-PS2913-1-M-A	PS2913-1-M-A	A	MiniFlat-4	UL/BSI	50	120	6.0	10/10	50 to 100	1.25	1.08	.93	.79

