

# VCC LED Assemblies and Mounting Components



OPTOELECTRONICS

RoHS Compliant This product is RoHS compliant.

lighting:theway

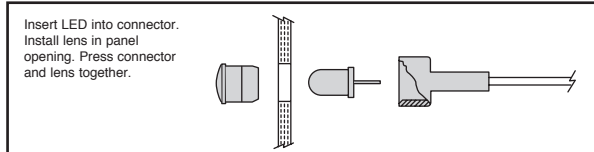
## PRE-WIRED SOLDERLESS LED INTERCONNECTIONS

### Material Specifications:

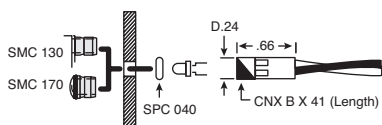
- Panel connector socket and ring: thermoplastic
- Header connector: thermoplastic (UL Listed materials)
- Terminals: phosphor bronze, tin plated
- Wire: 24AWG, 7 strand copper, insulated
- For **Locking Header** use Mouser Stock No.: 538-22-03-2021
- For **Plain Header** use Mouser Stock No.: 538-22-03-2021

### Electrical Specifications:

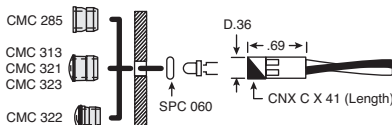
- Terminal: 3A continuous service
- Unique three-finger design mates to round, square, or rectangular leads .017" to .025"



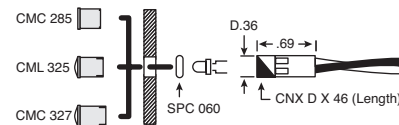
### PANEL MOUNT



### PANEL MOUNT



### PANEL MOUNT



### 3mm Bi-Lead LED

For quantities of 1000 and up, call for quote.

MOUSER STOCK NO.	Length: in.	Price Each			
		1	10	100	500
<b>.025" Header Post</b>					
593-CNXBE4104	4	1.88	1.73	1.58	1.43
593-CNXBE4108	8	1.88	1.73	1.58	1.43
593-CNXBE4112	12	2.02	1.86	1.69	1.53
593-CNXBE4118	18	2.16	1.98	1.81	1.64
593-CNXBE4124	24	2.30	2.11	1.93	1.75
<b>Stripped Ends</b>					
593-CNXBX4104	4	1.27	1.17	1.06	.96
593-CNXBX4108	8	1.27	1.17	1.06	.96
593-CNXBX4112	12	1.41	1.29	1.18	1.07
593-CNXBX4118	18	1.55	1.42	1.30	1.18
593-CNXBX4124	24	1.69	1.55	1.42	1.28

### 5mm Bi-Lead LED

For quantities of 1000 and up, call for quote.

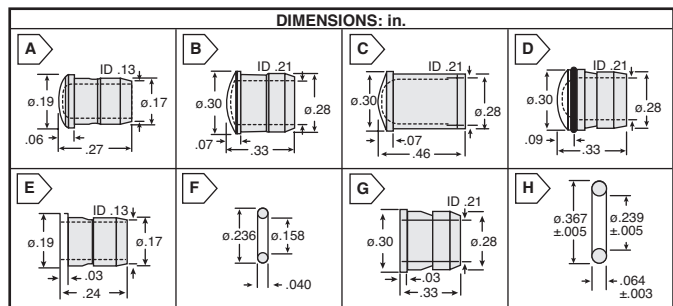
MOUSER STOCK NO.	Length: in.	Price Each			
		1	10	100	500
<b>.025" Header Post</b>					
593-CNXCE4104	4	1.88	1.73	1.58	1.43
593-CNXCE4108	8	1.88	1.73	1.58	1.43
593-CNXCE4112	12	2.02	1.86	1.69	1.53
593-CNXCE4118	18	2.16	1.98	1.81	1.64
593-CNXCE4124	24	2.30	2.11	1.93	1.75
<b>Stripped Ends</b>					
593-CNXCX4104	4	1.27	1.17	1.06	.96
593-CNXCX4108	8	1.27	1.17	1.06	.96
593-CNXCX4112	12	1.41	1.29	1.18	1.07
593-CNXCX4118	18	1.55	1.42	1.30	1.18
593-CNXCX4124	24	1.69	1.55	1.42	1.28

### 5mm Tri-Lead LED

For quantities of 1000 and up, call for quote.

MOUSER STOCK NO.	Length: in.	Price Each			
		1	10	100	500
<b>.025" Header Post</b>					
593-CNXDF4608	8	2.67	2.46	2.24	2.03
593-CNXDF4612	12	2.96	2.72	2.48	2.25
593-CNXDF4618	18	3.19	2.93	2.68	2.42
593-CNXDF4624	24	3.38	3.11	2.84	2.57
<b>Stripped Ends</b>					
593-CNXDX4604	4	1.74	1.60	1.46	1.32
593-CNXDX4608	8	1.74	1.60	1.46	1.32
593-CNXDX4618	18	2.25	2.07	1.89	1.71
593-CNXDX4624	24	2.44	2.24	2.05	1.85

## LOW PROFILE PANEL MOUNTS AND LENS FOR PBC MOUNTED LEDs



### Low Profile Diffused Lens

For quantities of 1000 and up, call for quote.

MOUSER STOCK NO.	VCC Part No.	Fig.	Lens Color	Price Each			
				1	10	100	500
<b>T1-3/4 (5mm), Mounting Hole 0.281"</b>							
593-3130RTP	CMC313RTP	D	Red	.31	.26	.24	.19
593-3130ATP	CMC313ATP	D	Amber	.31	.26	.24	.19
593-3130YTP	CMC313YTP	D	Yellow	.31	.26	.24	.19
593-3130GTP	CMC313GTP	D	Green	.31	.26	.24	.19
593-3130BTP	CMC313BTP	D	Blue	.31	.26	.24	.19
593-3130CTP	CMC313CTP	D	Clear	.31	.26	.24	.19
<b>T1-3/4 (5mm), Moisture Seal, Mounting Hole 0.281"</b>							
593-3220R	CMS322RTP	D	Red	.84	.77	.69	.56
593-3220A	CMS322ATP	D	Amber	.84	.77	.69	.56
593-3220Y	CMS322YTP	D	Yellow	.84	.77	.69	.56
593-3220G	CMS322GTP	D	Green	.84	.77	.69	.56
593-3220B	CMS322BTP	D	Blue	.84	.77	.69	.56
593-3220C	CMS322CTP	D	Clear	.84	.77	.69	.56

### Low Profile Fresnel Lens

For quantities of 1000 and up, call for quote.

MOUSER STOCK NO.	VCC Part No.	Fig.	Length: in.	Price Each			
				1	10	100	500
<b>T1 (3mm), Mounting Hole 0.171"</b>							
593-1700R	SMC170RTP	A	Red	.28	.24	.22	.17
593-1700A	SMC170ATP	A	Amber	.28	.24	.22	.17
593-1700Y	SMC170YTP	A	Yellow	.28	.24	.22	.17
593-1700G	SMC170GTP	A	Green	.28	.24	.22	.17
593-1700B	SMC170BTP	A	Blue	.28	.24	.22	.17
593-1700C	SMC170CTP	A	Clear	.28	.24	.22	.17
<b>T1-3/4 (5mm), Mounting Hole 0.281"</b>							
593-3210R	CMC321RTP	B	Red	.31	.26	.24	.19
593-3210A	CMC321ATP	B	Amber	.31	.26	.24	.19
593-3210Y	CMC321YTP	B	Yellow	.31	.26	.24	.19
593-3210G	CMC321GTP	B	Green	.31	.26	.24	.19
593-3210B	CMC321BTP	B	Blue	.31	.26	.24	.19
593-3210C	CMC321CTP	B	Clear	.31	.26	.24	.19
593-3250C	CML325CTP	C	Clear	.31	.26	.24	.19

### Low Profile Plain End Lens

For quantities of 1000 and up, call for quote.

MOUSER STOCK NO.	VCC Part No.	Fig.	Description	Price Each			
				1	10	100	500
<b>T1-3/4 (5mm), Mounting Hole 0.281"</b>							
593-3230C	CMC323CTP	B	Clear	.31	.26	.24	.19
593-3270C	CML327CTP	C	Clear	.31	.26	.24	.19

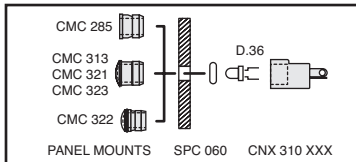
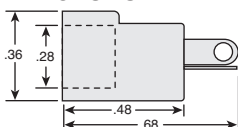
### Mounts and Spacers

For quantities of 1000 and up, call for quote.

MOUSER STOCK NO.	VCC Part No.	Fig.	Description	Price Each			
				1	10	100	500
<b>3mm</b>							
593-SMC130CTP	SMC130CTP	E	T1 Clear	.20	.17	.15	.12
593-SMC130BLK	SMC130BLK	E	T1 Black	.15	.13	.12	.09
593-SPC040	SPC040	F	T1 Spacer	.11	.09	.08	.07
<b>5mm</b>							
593-CMC285CTP	CMC285CTP	G	T1-3/4 Clear	.24	.21	.19	.15
593-CMC285BLK	CMC285BLK	G	T1-3/4 Black	.21	.18	.16	.13
593-SPC060	SPC060	H	T1-3/4 Spacer	.11	.09	.08	.07

## SOLDERLESS LED CONNECTORS

1/4W Current limiting resistor built into the natural polypropylene housing. 1/2W Resistor can be built upon request. Terminals are phosphor bronze, tin plated.



MOUSER STOCK NO.	Resistance Value (Ω)	Price Each			
		1	10	100	500
593-CNX310000	No resistor	.60	.52	.47	.37
593-CNX310033	330	.98	.84	.75	.60
593-CNX310056	560	.98	.84	.75	.60
593-CNX310120	1.2K	.98	.84	.75	.60
593-CNX310220	2.2K	.98	.84	.75	.60

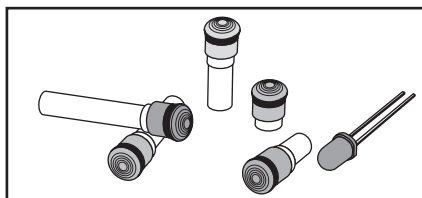
## PRESS-FIT MOISTURE SEALED LITEPIPE® ASSEMBLY

### Features:

- Exceeds NEMA 4 rating
- 180° viewing angle for LEDs
- Panel Mount independent of circuit board

### Installation:

593-RNG268 Must be used. Pass assembly through the panel opening and press retaining ring to secure unit to panel. Slide PCB into position aligning LED with end of the LITEPIPE® unit.



For quantities of 1000 and up, call for quote.

MOUSER STOCK NO.	VCC Part No.	Color	Litepipe Length: in.	Price Each			
				1	10	100	500
593-LMS033RTP	LMS033RTP	Red	0.33	1.33	1.24	1.15	.94
593-LMS033GTP	LMS033GTP	Green	0.33	1.33	1.24	1.15	.94
593-LMS033CTP	LMS033CTP	Clear	0.33	1.33	1.24	1.15	.94
593-LMS053RTP	LMS053RTP	Red	0.53	1.33	1.24	1.15	.94
593-LMS053GTP	LMS053GTP	Green	0.53	1.33	1.24	1.15	.94
593-LMS053CTP	LMS053CTP	Clear	0.53	1.33	1.24	1.15	.94
593-LMS133RTP	LMS133RTP	Red	1.33	1.33	1.24	1.15	.94
593-LMS133GTP	LMS133GTP	Green	1.33	1.33	1.24	1.15	.94
593-LMS133CTP	LMS133CTP	Clear	1.33	1.33	1.24	1.15	.94