

CHICAGO MINIATURE Thru-Hole LED Lamps

Chicago Miniature Lighting, LLC
Lighting the world since 1910

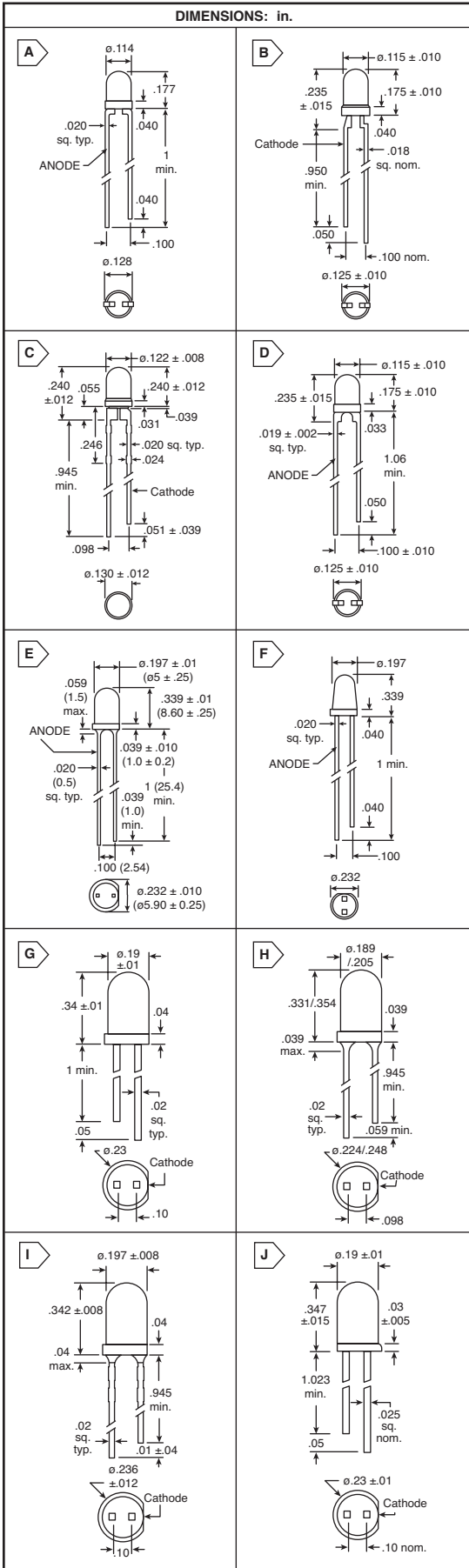
RoHS Compliant This product is RoHS compliant.

Chicago Miniature Lighting, LLC
Lighting the world since 1910

THRU-HOLE LED LAMPS

LED Indication

Chicago Miniature



T-1 Blue

For quantities of 1000 or more, call for quote.

MOUSER STOCK NO.	Fig.	Color		Forward Voltage @ IF=20mA		Luminous Intensity @ 20mA(mcd)		Peak Wavelength (nm)	Viewing Angle	Price Each		
		LED	Lens	Typ.	Max.	Min.	Typ.			1	100	500
606-CMD264UBD	A	Blue	Blue Diff	4.9	5.5	63	100	430	45°	1.50	1.30	1.21
606-CMD264UBC	A	Blue	Clear	4.9	5.5	160	250	430	30°	1.61	1.40	1.30

T-1 Low Current

For quantities of 1000 or more, call for quote.

MOUSER STOCK NO.	Fig.	Color		Forward Voltage @ IF=2mA		Luminous Intensity @ 2mA(mcd)		Peak Wavelength (nm)	Viewing Angle	Price Each		
		LED	Lens	Typ.	Max.	Min.	Typ.			1	100	500
606-4300F1LC	B	Red	Red Diff	1.8	2.0	0.8	2.1	634	50°	.35	.30	.28
606-4300F7LC	B	Yellow	Yel Diff	1.9	2.5	0.9	1.6	583	50°	.35	.30	.28
606-4300F5LC	B	Green	Grn Diff	1.8	2.2	1.0	2.1	565	50°	.35	.30	.28

T-1 Super Bright

For quantities of 1000 or more, call for quote.

MOUSER STOCK NO.	Fig.	Color		Forward Voltage @ IF=2mA		Luminous Intensity @ 2mA(mcd)		Peak Wavelength (nm)	Viewing Angle	Price Each		
		LED	Lens	Typ.	Max.	Min.	Typ.			1	100	500
606-4303F1	C	Red	Red Diff	2.0	3.0	3.6	10.0	650	90°	.21	.18	.17
606-4303F3	C	Amber	Amber Diff	2.2	3.0	3.0	7.0	603	60°	.30	.26	.25
606-4303F7	C	Yellow	Yellow Diff	2.1	3.0	2.2	6.3	585	90°	.21	.18	.17
606-4303F5	C	Green	Green Diff	2.2	3.0	5.6	16.0	562	90°	.21	.18	.17

T-1 w/ Integrated Resistor

For quantities of 1000 or more, call for quote.

MOUSER STOCK NO.	Fig.	Color		Forward Voltage @ IF=2mA			Luminous Intensity @ 2mA(mcd)		Peak Wavelength (nm)	Viewing Angle	Price Each		
		LED	Lens	Typ.	Max.	Min.	Typ.	1			100	500	
606-4302F1-5V	D	Red	Red Diff	5	10	2.0	8.0	635	60°	.49	.42	.39	
606-4302F3-5V	D	Amber	Amber Diff	5	10	2.0	8.0	583	60°	.49	.42	.39	
606-4302F5-5V	D	Green	Green Diff	5	10	2.0	8.0	565	60°	.49	.42	.39	
606-4302F1-12V	D	Red	Red Diff	12	13	2.0	8.0	635	60°	.58	.50	.47	
606-4302F3-12V	D	Amber	Amber Diff	12	13	2.0	8.0	583	60°	.58	.50	.47	
606-4302F5-12V	D	Green	Green Diff	12	13	2.0	8.0	565	60°	.58	.50	.47	

T-1 3/4 White

For quantities of 1000 or more, call for quote.

MOUSER STOCK NO.	Fig.	Emitted Color	Lens Color	Luminous Intensity			Forward Voltage		Peak Wavelength (nm)	Viewing Angle	Price Each		
				Min. mcd	Typ. mcd	Max. mcd	Typ.	Max.			1	100	500
606-CMD333UWC	E	White	Clear	1.7	2.3	2.6	3.75	3.85	475	20°	2.45	2.21	2.09

T-1 3/4 Blue

For quantities of 1000 or more, call for quote.

MOUSER STOCK NO.	Fig.	Color		Forward Voltage @ IF=20mA			Luminous Intensity @ 20mA(mcd)		Peak Wavelength (nm)	Viewing Angle	Price Each		
		LED	Lens	Typ.	Max.	Min.	Typ.	1			100	500	
606-CMD383UBC/H2	F	Blue	Clear	4.9	5.5	250	350	430	24°	2.52	2.27	2.14	
606-CMD383UBC	F	Blue	Clear	4.9	5.5	600	800	430	12°	2.52	2.27	2.14	

T-1 3/4 Low Current

For quantities of 1000 or more, call for quote.

MOUSER STOCK NO.	Fig.	Color		Forward Voltage @ IF=2mA		Luminous Intensity @ 2mA(mcd)		Peak Wavelength (nm)	Viewing Angle	Price Each		
		LED	Lens	Typ.	Max.	Min.	Typ.			1	100	500
606-4300H1LC	G	Red	Red Diff	1.8	2.2	1.3	2.3	635	50°	.35	.30	.28
606-4300H7LC	G	Yellow	Yellow Diff	1.9	2.7	1.0	2.1	583	50°	.35	.30	.28
606-4300H5LC	G	Green	Green Diff	1.8	2.2	1.0	2.3	565	50°	.35	.30	.28

T-1 3/4 Super Bright

For quantities of 1000 or more, call for quote.

MOUSER STOCK NO.	Fig.	Color		Forward Voltage @ IF=10mA		Luminous Intensity @ 10mA(mcd)		Peak Wavelength (nm)	Viewing Angle	Price Each		
		LED	Lens	Typ.	Max.	Min.	Typ.			1	100	500
606-4304H1	H	Red	Red Diff	2.0	3.0	3.0	6.3	650	65°	.21	.18	.17
606-4304H3	H	Amber	Amber Diff	2.2	3.0	4.0	20.0	608	60°	.28	.24	.23
606-4304H7	H	Yellow	Yellow Diff	2.1	3.0	2.5	6.3	585	65°	.21	.18	.17
606-4304H5	H	Green	Green Diff	2.1	3.0	3.0	10.0	563	75°	.19	.16	.154

T-1 3/4 Ultra Bright

For quantities of 1000 or more, call for quote.

MOUSER STOCK NO.	Fig.	Color		Forward Voltage @ IF=20mA		Luminous Intensity @ 20mA(mcd)		Peak Wavelength (nm)	Viewing Angle	Price Each		
		LED	Lens	Typ.	Max.	Min.	Typ.			1	100	500
606-4305H1	I	Red	Red	2.1	3.0	20	60	650	30°	.21	.18	.17
606-4305H7	I	Yellow	Yellow	2.2	3.0	56	160	585	30°	.21	.18	.17
606-4305H5	I	Green	Green	2.2	3.0	30	100	563	30°	.21	.18	.17
606-4308H1	J	Red	Clear	1.8	2.2	90	240	645	24°	.58	.50	.47
606-4308H7	J	Yellow	Clear	2.2	3.0	95	140	583	24°	.40	.34	.32
606-4308H5	J	Green	Clear	2.3	3.0	110	140	565	24°	.40	.34	.32