

PARALLAX Development Boards and Accessories



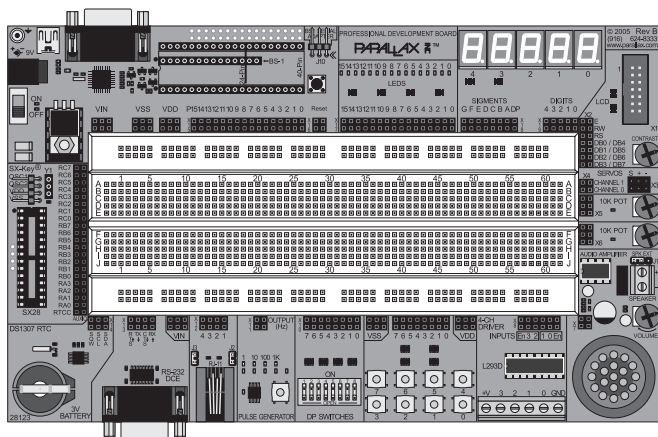
Products may be RoHS compliant. Check mouser.com for RoHS status.

PROFESSIONAL DEVELOPMENT BOARD

The Parallax Professional Development Board (PDB) is high-quality, fully-integrated development platform for BASIC Stamp®, Javelin Stamp, and Ubicom® SX28AC/DP microcontrollers.

Features:

- 40-pin DIP socket (for all BASIC Stamp 24/40-pin and Javelin Stamp modules)
- 14-pin SIP socket (for BS1-IC)
- 28-pin "skinny" DIP socket (for SX28AC/DP)
- USB, DB-9, BS1, and SX-Key programming connectors
- 5 volt, 1.0 amp power-supply with power switch
- Five blue 7-segment (with decimal point), common-cathode LED displays
- Parallel LCD (available separately) may be configured in 4-bit or 8-bit mode
- Two servo-compatible headers
- Two 10k Ohm potentiometers
- L293D high-current driver for motors, solenoids, etc.
- Eight, normally-open pushbuttons (I/O lines protected, and pulled-up to Vdd via 10K)
- Pulse generator with selectable frequency (1Hz, 10Hz, 100Hz, or 1kHz)
- RS-232 DCE port with MAX232E transceiver

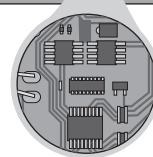
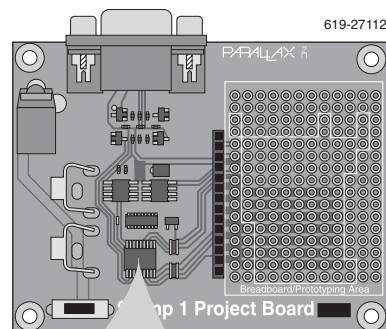


For quantities greater than listed, call for quote.

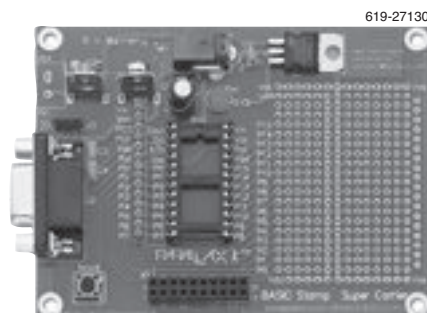
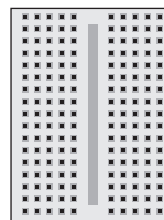
| MOUSER STOCK NO. | Parallax Part No. | Description | Price Each |
|---------------------------|-------------------|--------------------------------|------------|
| 619-28138 | 28138 | Professional Development Board | 159.99 |

BASIC STAMP 1 PROJECT BOARD

For students, hobbyists, and professionals who desire the small form and features of the BASIC Stamp 1 microcontroller, but need a development platform in the mold of the Parallax BOE and HomeWork boards, the BASIC Stamp 1 Project Board is low-cost solution that is sure to fit the bill.



BASIC Stamp 1 built onto the board!



For quantities greater than listed, call for quote.

| MOUSER STOCK NO. | Parallax Part No. | Description | Price Each |
|---------------------------|-------------------|---|------------|
| 619-27112 | 27112 | Project Board with built in BASIC Stamp | 29.99 |
| 619-27130 | 27130 | Thru-hole Development Board for a BASIC Stamp | 19.99 |

BASIC STAMP ACCESSORIES

For quantities greater than listed, call for quote.

| MOUSER STOCK NO. | Parallax Part No. | Description | Price Each |
|-------------------------------|-------------------|---|------------|
| 619-BS1USB | BS1USB | BS1 USB Board - USB-A Connection BS1 Module | 39.99 |
| 619-27111 | 27111 | Serial Adapter | 4.99 |
| 619-27924 | 27924 | Taos TSL230 Light to Frequency Converter | 5.99 |
| 619-28015 | 28015 | Ping))) Ultrasonic Sensor | 29.99 |
| 619-570-28015 | 570-28015 | Ping))) Mounting Bracket | 19.99 |
| 619-28017 | 28017 | Memsic Accelerometer (Dual Axis) | 29.95 |
| 619-28018 | 28018 | Sensirion Temperature/Humidity Sensor | 35.99 |
| 619-28026 | 28026 | Hitachi H48C 3-Axis Accelerometer | 29.98 |
| 619-28130 | 28130 | AD592 Temp Probe | 15.99 |
| 619-30056 | 30056 | FlexiForce Sensor | 25.99 |
| 619-350-00009 | 350-00009 | Photoresistor | 2.23 |
| 619-555-28027 | 555-28027 | PIR Motion Sensor | 9.99 |
| 619-27970 | 27970 | 112 x 16 Serial Graphic VFD Display | 64.78 |
| 619-27976 | 27976 | Serial LCD - Parallax 2 x 16 Non-backlit | 24.99 |
| 619-27977 | 27977 | Serial LCD - Parallax 2 x 16 Backlit | 29.99 |
| 619-27979 | 27979 | Serial LCD - Parallax 4 x 20 Backlit | 39.99 |
| 619-30057 | 30057 | Serial LCD - Matrix Orbital 2x20 Backlit | 79.95 |