

# HARTING Filtered D-Sub Adapters and Connectors



## FILTERED D-SUB ADAPTERS

### Features:

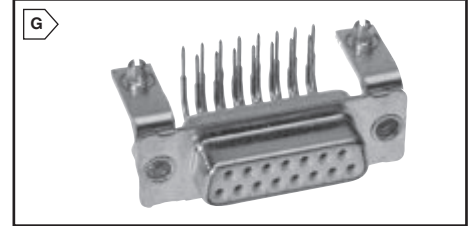
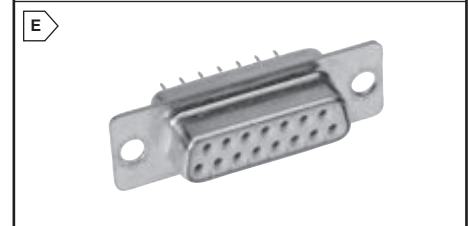
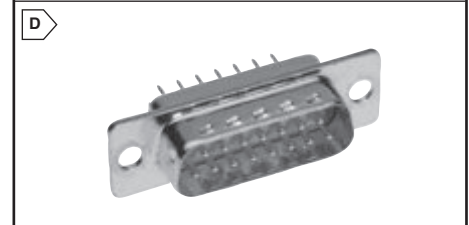
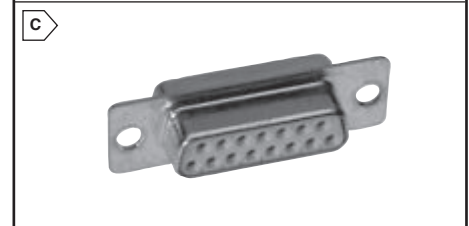
- Provides electronic noise reduction in various applications from high speed industrial digital broadcast to industrial test equipment.
- Internal screening through utilization of copper foil soldered to male and female connectors.
- Efficient shielding of internal signal lines from EMI and RFI.
- Design uses the same patented design of multiple layer PCB with chip capacitors as HARTING'S range of filter D connectors.
- Plating performance level 2 as per CECC 75 301-802, guarantees > 250 mating cycles.
- Ideal solution for diagnostic purposes in R&D departments



RoHS Compliant

For quantities of 25 and up, call for quote.

MOUSER STOCK NO.	HARTING Part No.	Fig.	No. of Positions	Capacitance	Price Each		
					1	5	10
617-09-64-100-7210	09 64 100 7210	A	9	47 pF	31.10	29.76	28.76
617-09-64-100-7220	09 64 100 7220	A	9	470 pF	31.10	29.76	28.76
617-09-64-100-7230	09 64 100 7230	A	9	1000 pF	31.10	29.76	28.76
617-09-64-100-7240	09 64 100 7240	A	9	3900 pF	31.10	29.76	28.76
617-09-64-200-7210	09 64 200 7210	A	15	47 pF	41.47	39.68	38.36
617-09-64-200-7220	09 64 200 7220	A	15	470 pF	41.47	39.68	38.36
617-09-64-200-7230	09 64 200 7230	A	15	1000 pF	41.47	39.68	38.36
617-09-64-200-7240	09 64 200 7240	A	15	3900 pF	41.47	39.68	38.36
617-09-64-300-7210	09 64 300 7210	A	25	47 pF	56.49	54.06	52.26
617-09-64-300-7220	09 64 300 7220	A	25	470 pF	56.49	54.06	52.26
617-09-64-300-7230	09 64 300 7230	A	25	1000 pF	56.49	54.06	52.26
617-09-64-300-7240	09 64 300 7240	A	25	3900 pF	56.49	54.06	52.26
617-09-64-400-7210	09 64 400 7210	A	37	47 pF	71.62	68.52	66.25
617-09-64-400-7220	09 64 400 7220	A	37	470 pF	71.62	68.52	66.25
617-09-64-400-7230	09 64 400 7230	A	37	1000 pF	71.62	68.52	66.25
617-09-64-400-7240	09 64 400 7240	A	37	3900 pF	71.62	68.52	66.25



"D" Connectors

HARTING

## 3900 PF CAPACITANCE FILTERED D-SUB CONNECTORS



RoHS Compliant

For quantities greater than listed, call for quote.

MOUSER STOCK NO.	HARTING Part No.	Fig.	No. of Positions	Type	Price Each			
					1	10	25	50
617-09-64-121-7240	09 64 121 7240	B	9	Male	9.23	8.72	8.36	8.15
617-09-64-221-7240	09 64 221 7240	B	15	Male	13.14	12.41	11.92	11.60
617-09-64-321-7240	09 64 321 7240	B	25	Male	18.60	17.57	16.87	16.42
617-09-64-421-7240	09 64 421 7240	B	37	Male	22.89	21.62	20.75	20.22
617-09-64-111-7240	09 64 111 7240	C	9	Female	9.64	9.11	8.74	8.52
617-09-64-211-7240	09 64 211 7240	C	15	Female	13.68	12.93	12.41	12.09
617-09-64-311-7240	09 64 311 7240	C	25	Female	19.85	18.74	18.00	17.53
617-09-64-411-7240	09 64 411 7240	C	37	Female	25.60	24.18	23.21	22.60



RoHS Compliant

For quantities greater than listed, call for quote.

### Solder Cup

MOUSER STOCK NO.	HARTING Part No.	Fig.	No. of Positions	Type	Price Each			
					1	10	25	50
617-09-64-122-7240	09 64 122 7240	D	9	Male	9.49	8.86	8.42	8.16
617-09-64-222-7240	09 64 222 7240	D	15	Male	13.17	12.44	11.94	11.63
617-09-64-322-7240	09 64 322 7240	D	25	Male	18.62	17.58	16.88	16.43
617-09-64-422-7240	09 64 422 7240	D	37	Male	23.84	22.50	21.61	21.04
617-09-64-112-7240	09 64 112 7240	E	9	Female	9.73	9.19	8.82	8.59
617-09-64-212-7240	09 64 212 7240	E	15	Female	13.85	13.08	12.56	12.23
617-09-64-312-7240	09 64 312 7240	E	25	Female	20.08	18.97	18.21	17.74
617-09-64-412-7240	09 64 412 7240	E	37	Female	25.95	24.51	23.52	22.92



RoHS Compliant

For quantities greater than listed, call for quote.

### Right Angle Boardlock and Clinch Nut

MOUSER STOCK NO.	HARTING Part No.	Fig.	No. of Positions	Type	Price Each			
					1	10	25	50
617-09-64-124-7242	09 64 124 7242	F	9	Male	12.06	11.39	10.92	10.64
617-09-64-224-7242	09 64 224 7242	F	15	Male	16.48	15.56	14.94	14.55
617-09-64-324-7242	09 64 324 7242	F	25	Male	22.86	21.59	20.73	20.19
617-09-64-424-7242	09 64 424 7242	F	37	Male	29.18	27.56	26.46	25.78
617-09-64-114-7242	09 64 114 7242	G	9	Female	11.69	11.04	10.60	10.32
617-09-64-214-7242	09 64 214 7242	G	15	Female	16.73	15.81	15.16	14.78
617-09-64-314-7242	09 64 314 7242	G	25	Female	23.55	22.24	21.36	20.80
617-09-64-414-7242	09 64 414 7242	G	37	Female	30.12	28.44	27.30	26.59