

# HARTING Heavy Duty Han® Power Accessories



## HEAVY DUTY HAN® POWER ACCESSORIES



RoHS Compliant

### Crimp Contacts For Inserts

• RoHS Compliant per HARTING documentation

For quantities of 100 and up, call for quote.

MOUSER STOCK NO.	HARTING Part No.	Fig.	Contact Type	Wire Gauge		Price Each			
				mm <sup>2</sup>	AWG	1	10	25	50
<b>16A Contacts For Han® Insert Series E, A, EE, Q, Han E Modules, and Inserts</b>									
617-09-33-000-6121	09 33 000 6121	A	Male	0.5	20	.44	.40	.37	.35
617-09-33-000-6105	09 33 000 6105	A	Male	1	18	.42	.38	.353	.334
617-09-33-000-6104	09 33 000 6104	A	Male	1.5	16	.42	.38	.353	.334
617-09-33-000-6102	09 33 000 6102	A	Male	2.5	14	.42	.38	.353	.334
617-09-33-000-6107	09 33 000 6107	A	Male	4	12	.42	.38	.353	.334
617-09-33-000-6220	09 33 000 6220	B	Female	0.5	20	.44	.40	.37	.35
617-09-33-000-6205	09 33 000 6205	B	Female	1	18	.42	.38	.353	.334
617-09-33-000-6204	09 33 000 6204	B	Female	1.5	16	.42	.38	.353	.334
617-09-33-000-6202	09 33 000 6202	B	Female	2.5	14	.42	.38	.353	.334
617-09-33-000-6207	09 33 000 6207	B	Female	4	12	.42	.38	.353	.334
<b>40A Contacts for Han® C Modules and Inserts</b>									
617-09-32-000-6104	09 32 000 6104	A	Male	1.5	16	2.51	2.26	2.14	2.00
617-09-32-000-6105	09 32 000 6105	A	Male	2.5	14	2.51	2.26	2.14	2.00
617-09-32-000-6107	09 32 000 6107	A	Male	4	12	2.51	2.27	2.14	2.01
617-09-32-000-6108	09 32 000 6108	A	Male	6	10	2.39	2.15	2.03	1.91
617-09-32-000-6204	09 32 000 6204	B	Female	1.5	16	3.54	3.19	3.00	2.82
617-09-32-000-6205	09 32 000 6205	B	Female	2.5	14	3.67	3.30	3.10	2.92
617-09-32-000-6207	09 32 000 6207	B	Female	4	12	3.67	3.30	3.10	2.92
617-09-32-000-6208	09 32 000 6208	B	Female	6	10	3.46	3.12	2.94	2.76
<b>10A Contacts For Han® Insert Series D, DD, Han DD Modules, and Inserts</b>									
617-09-15-000-6104	09 15 000 6104	C	Male	.14 - .37	26-22	.76	.68	.667	.648
617-09-15-000-6103	09 15 000 6103	C	Male	0.5	20	.80	.72	.68	.64
617-09-15-000-6102	09 15 000 6102	C	Male	1	18	.76	.68	.648	.611
617-09-15-000-6101	09 15 000 6101	C	Male	1.5	16	.76	.68	.648	.611
617-09-15-000-6106	09 15 000 6106	C	Male	2.5	14	.84	.76	.72	.68
617-09-15-000-6204	09 15 000 6204	D	Female	.14 - .37	26-22	.82	.76	.685	.648
617-09-15-000-6203	09 15 000 6203	D	Female	0.5	20	.80	.72	.68	.64
617-09-15-000-6202	09 15 000 6202	D	Female	1	18	.76	.68	.648	.611
617-09-15-000-6201	09 15 000 6201	D	Female	1.5	16	.76	.68	.648	.611
617-09-15-000-6206	09 15 000 6206	D	Female	2.5	14	.84	.76	.72	.68

### Crimp Contact Tools

For quantities of 5 and up, call for quote.

MOUSER STOCK NO.	HARTING Part No.	Fig.	Han® Insert Series	Description	Price Each
<b>HARTING Crimp Tool</b>					
617-09-99-000-0021	09 99 000 0021	E	D, E	Standard Crimp Tool for 16A and 10A Contacts	232.54
617-09-99-000-0110	09 99 000 0110	F	C, D, E	Crimp Tool for 26-12 AWG Contacts	734.03
<b>Buchanan Crimp Tool</b>					
617-09-99-000-0001	09 99 000 0001	G	All	MIL Type Crimp Tool for 16A and 10A Contacts	515.77
<b>Depth Adjustment Gauge for Buchanan Crimp Tool</b>					
617-09-99-000-0379	09 99 000 0379	H	D	Buchanan Depth Gauge for 26-24 AWG	52.28
<b>Contact Locators for Buchanan Crimp Tool</b>					
617-09-99-000-0310	09 99 000 0310	I	E	Buchanan Crimp Tool Locator for 16A Contacts	7.70
617-09-99-000-0311	09 99 000 0311	I	D	Buchanan Crimp Tool Locator for 10A Contacts	7.70
<b>Crimp Contact Removal Tools</b>					
617-09-99-000-0012	09 99 000 0012	J	DD, D	Removal Tool for 10A Contacts	69.23
617-09-99-000-0319	09 99 000 0319	K	EE	Removal Tool for 16A Contacts	32.87

### Axial Screw Tool

For quantities of 5 and up, call for quote.

MOUSER STOCK NO.	HARTING Part No.	Fig.	Description	Price Each
<b>Han® Modular Hexagonal Screw Driver</b>				
617-09-99-000-0313	09 99 000 0313	L	Hexagonal Screw Driver SW 4	20.46

### Metal IP68/NEMA 4X PG Cable Glands For Hoods

• RoHS Compliant per HARTING documentation

RoHS Compliant

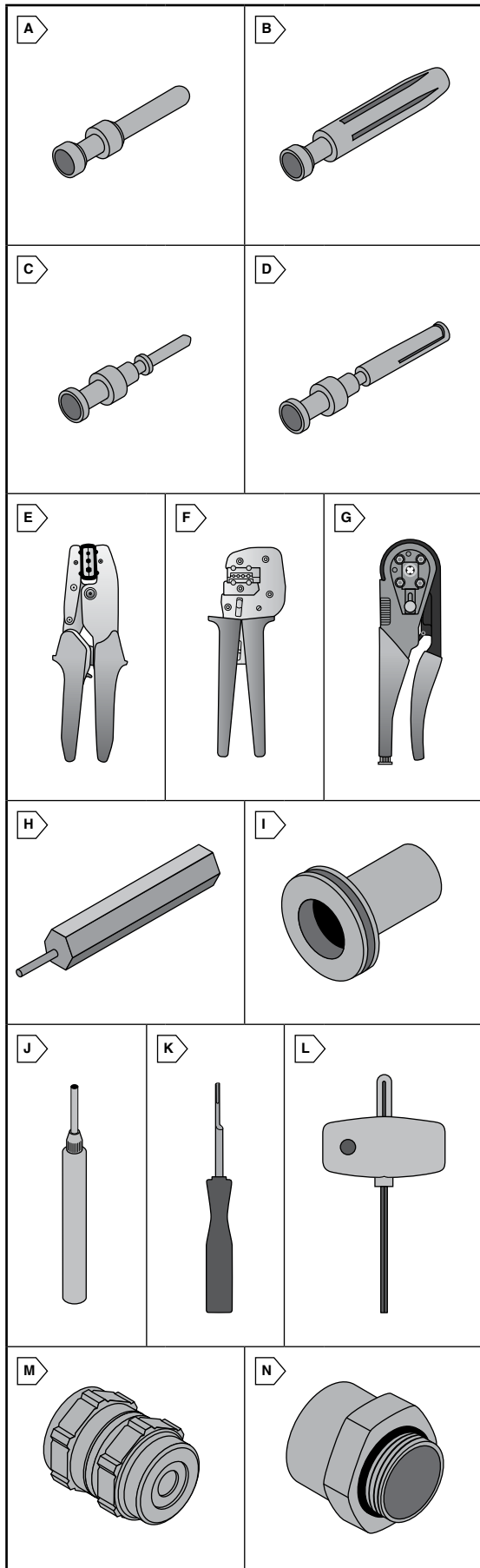
For quantities of 100 and up, call for quote.

MOUSER STOCK NO.	HARTING Part No.	Fig.	PG Size	Wrench Size	Cable Dia. (mm)	Price Each			
						1	10	25	50
617-09-00-000-5080	09 00 000 5080	M	11	20	5 - 8	11.84	10.65	10.05	9.47
617-09-00-000-5082	09 00 000 5082	M	11	20	7 - 10.5	11.54	10.39	9.81	9.23
617-09-00-000-5086	09 00 000 5086	M	16	24	6 - 9.5	17.04	15.32	14.48	13.62
617-09-00-000-5088	09 00 000 5088	M	16	24	9 - 13	18.04	16.22	15.33	14.42
617-09-00-000-5089	09 00 000 5089	M	16	24	11.5 - 15.5	16.04	14.44	13.64	12.83
617-09-00-000-5090	09 00 000 5090	M	21	30	7 - 10.5	32.40	29.16	27.52	25.92
617-09-00-000-5091	09 00 000 5091	M	21	30	9 - 13	25.64	23.06	21.78	20.50
617-09-00-000-5092	09 00 000 5092	M	21	30	11.5 - 15.5	23.88	21.48	20.29	19.09
617-09-00-000-5093	09 00 000 5093	M	21	30	14 - 18	25.44	22.88	21.61	20.35
617-09-00-000-5095	09 00 000 5095	M	29	40	17 - 21	51.90	46.70	44.12	41.53
617-09-00-000-5096	09 00 000 5096	M	29	40	20 - 25	37.40	33.66	31.78	29.92
617-09-00-000-5097	09 00 000 5097	M	29	40	24 - 28	45.50	40.95	38.67	36.39

### PG To NPT Adapters

For quantities of 100 and up, call for quote.

MOUSER STOCK NO.	HARTING Part No.	Fig.	PG Size	Female NPT Thread	Price Each			
					1	10	25	50
617-73-00-000-5310	73 00 000 5310	N	11	1/2"	10.02	9.01	8.52	8.01
617-73-00-000-5312	73 00 000 5312	N	16	1/2"	9.10	8.19	7.74	7.28
617-73-00-000-5313	73 00 000 5313	N	21	1/2"	14.36	12.91	12.20	11.48
617-73-00-000-5314	73 00 000 5314	N	21	3/4"	13.32	11.98	11.32	10.64
617-73-00-000-5315	73 00 000 5315	N	29	1"	24.66	22.18	20.96	19.73



HARTING Power Connectors