

MAGNECRAFT Solid State Relays

a company of
Schneider
Electric

Magnecraft
Your Contact for Industrial Relays

CLASS 226 MINIATURE SOLID STATE RELAYS

Specifications:

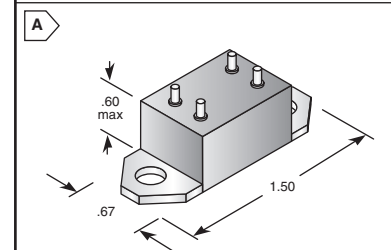
- Contact arrangement: SPST-NO
- Load current range: 50mA to 7A



For quantities of 100 and up, call for quote.

MOUSER STOCK NO.	Magnecraft® Part No.	Fig.	Input	Load Voltage	Max. Output Current	Price Each			
						1	10	25	50
PC Terminals									
528-226RE75	W226RE-7-5A1	A	5 VDC	140 VAC	7AMP	23.22	21.36	20.29	19.22
528-226RE85	W226RE-8-5A1	A	5 VDC	280 VAC	7AMP	23.22	21.36	20.29	19.22
Push on Terminals									
528-226R75	W226R-7-5A1	A	5 VDC	140 VAC	7AMP	23.22	21.36	20.29	19.22
528-226R85	W226R-8-5A1	A	5 VDC	280 VAC	7AMP	23.22	21.36	20.29	19.22
528-226R812	W226R-8-12A1	A	12 VDC	280 VAC	7AMP	54.40	52.03	49.67	44.94

DIMENSIONS: in.



SERIES 861 SOLID STATE RELAYS

Specifications:

- Integral Heatsink
- Factory Tested Thermal Management
- Solid State Circuitry
- Isolation From Inputs to Outputs
- No Interference Between Separate Circuits
- Internal Snubber
- Protects From Transients
- Flexible Mounting
- Mount Directly on DIN Rail or Panel

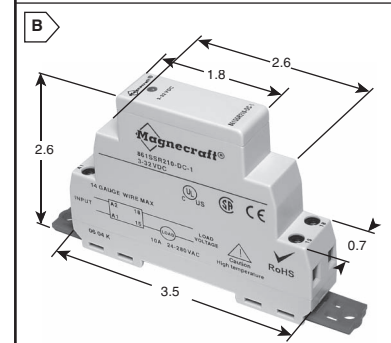


RoHS Compliant



For quantities of 100 and up, call for quote.

MOUSER STOCK NO.	Magnecraft® Part No.	Fig.	Rated Load Current	Contact Form	Input Voltage	Load Voltage Range	Price Each			
							1	10	25	50
AC Operated										
528-861SSR210-AC-1	861SSR210-AC-1	B	10	SPST-NO	90-280 VAC	24-280 VAC	47.93	39.91	37.71	35.50
DC Operated										
528-861SSR210-DC-1	861SSR210-DC-1	B	10	SPST-NO	3-32 VDC	24-280 VAC	37.81	31.47	29.74	28.00
528-861SSRA208-DC-1	861SSRA208-DC-1	B	8	SPST-NO	3-32 VDC	24-280 VAC	29.30	24.38	23.03	21.69
528-861SSR115-DD	861SSR115-DD	B	15	SPST-NO	3.5-32 VDC	3-50 VDC	44.35	36.93	34.90	32.85
528-861SSR208-DD	861SSR208-DD	B	8	SPST-NO	3.5-32 VDC	3-150 VDC	49.00	40.79	38.53	36.27



SSRDIN SOLID STATE RELAYS

Features:

- Integral Heatsink
- Finger-Safe Safety Cover
- Solid State Circuitry
- DIN or Panel Mountable
- LED Status Indicator

Specifications:

- Typical Input Current: AC - 12 mA; DC - 16 mA
- Operating Temperature: -30°C to +80°C
- Zero-voltage switching
- Leakage Current: 10 mA maximum

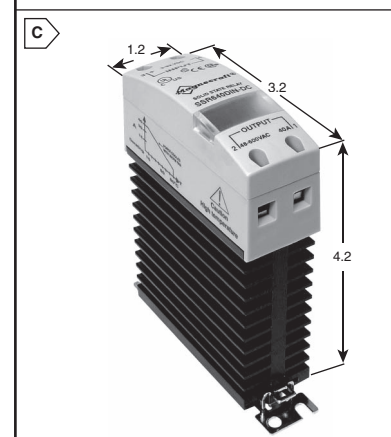


RoHS Compliant



For quantities of 100 and up, call for quote.

MOUSER STOCK NO.	Magnecraft® Part No.	Fig.	Rated Load Current	Contact Form	Price Each			
					1	10	25	50
AC Controlled Input, 90-280 VAC with LED Lamp Indicator								
528-SSR210DIN-AC	SSR210DIN-AC	C	24-280 VAC	10A	56.54	47.08	44.48	41.88
528-SSR225DIN-AC	SSR225DIN-AC	C	24-280 VAC	25A	63.70	53.05	50.12	47.19
528-SSR240DIN-AC	SSR240DIN-AC	C	24-280 VAC	40A	83.84	80.19	76.55	69.26
528-SSR610DIN-AC	SSR610DIN-AC	C	48-660 VAC	10A	177.76	169.68	161.60	145.43
528-SSR625DIN-AC	SSR625DIN-AC	C	48-660 VAC	25A	89.84	74.81	70.67	66.55
528-SSR640DIN-AC	SSR640DIN-AC	C	48-660 VAC	40A	118.93	113.76	108.59	98.25
DC Controlled Input, 3-32 VDC with LED Lamp Indicator								
528-SSR210DIN-DC	SSR210DIN-DC	C	24-280 VAC	10A	46.92	39.09	36.93	34.77
528-SSR240DIN-DC	SSR240DIN-DC	C	24-280 VAC	40A	83.84	80.19	76.55	69.26
528-SSR610DIN-DC	SSR610DIN-DC	C	48-660 VAC	10A	146.09	121.65	114.94	108.22
528-SSR625DIN-DC	SSR625DIN-DC	C	48-660 VAC	25A	85.34	71.05	67.13	63.20



Magnecraft Solid State Relays