

## INSERTION/EXTRACTION TOOLS AND KIT

All tools that engage conductive surfaces are CMOS safe and include grounding lugs where appropriate. WK-7 kit includes DIP IC extractors and inserters to accommodate all IC's from 8 to 40 pins.

MOUSER STOCK NO.	OK Industries Part No.	Fig.	Description	Price Each	
				1	5
<b>801-MOS1416</b>	MOS-1416	A	Insertion Tool 14-16 Pins (.3" Pitch)	18.10	17.20
<b>801-MOS2428</b>	MOS-2428	B	Insertion Tool 24-28 Pins (.6" Pitch)	24.86	23.62
<b>801-MOS40</b>	MOS-40	C	Insertion Tool 36-40 Pins (.6" Pitch)	24.86	23.62
<b>801-EX1</b>	EX-1	E	Extraction Tool 8-24 Pins	2.85	2.70
<b>801-EX2</b>	EX-2	D	Extraction Tool 24-40 Pins	24.86	23.62
<b>801-WK7</b>	WK-7	A-E	Kit (Includes above tools)	84.79	80.55
<b>801-EX-5</b>	EX-5	F	ESD safe PLCC extraction tool	20.16	19.38
<b>801-EX-6</b>	EX-6	F	Low cost PLCC extraction tool	10.16	9.76

## IMPACTPLUS™ PUNCH DOWN TOOLS

The revolutionary ImpactPlus family of impact tools has been developed to satisfy ergonomic requirements and boost operator efficiency. With worker safety in mind, we consulted a certified ergonomist and added features including:

### Features:

- Ergonomic design minimizes repetitive stress and impact recoil
- Single-sided Blades reduce cost, Maximize Wear Resistance
- Convenient Blade Storage in handle (holds 3 blades)
- Blade retention nut and impact settings switch are easy to operate using finger tips

EP-66: 66 block blade	EP-110: 110 block blade
EP-66C: 66 block blade with cutter	EP-110C: 110 block blade with cutter
Epxi: Manual Punch Down Tool - Adjustable Impact	

MOUSER STOCK NO.	OK Industries Part No.	Fig.	Kit Includes:	Price Each	
				1	5
<b>801-KIT66</b>	Epxi-KIT66	G	Epxi, EP-66, and EP-66C	49.65	47.17
<b>801-KIT110</b>	Epxi-KIT110	G	Epxi, EP-110, and EP-110C	49.65	47.17

## CONNECTOR INSERTION AND EXTRACTION TOOL KIT

These tools service virtually all connectors conforming to Mil-C-26482, Mil-C-26500 with front release contacts made by such manufacturers as AMP, Amphenol, Cinch, and Elico. These tools contain strong, durable stainless steel probes and color coded handles.

### Features:

- Both kits packaged in an attractive and durable leather padded zipper case.

### Connector Insertion Kit

Includes the three most popular color coded sized insertion tools for contact sizes 12 (yellow), 16 (blue), and 20 (red). 5" long.

MOUSER STOCK NO.	OK Industries Part No.	Fig.	Kit Includes:	Price Each	
				1	5
<b>801-KA-260</b>	KA-260	H	A-4598 (red), A-4599 (blue), A-4600 (yellow)	235.52	223.75

### Connector Extraction Kit

Includes the three most popular color coded extraction tools for contact sizes 12 (yellow), 16 (blue), and 20 (red). 6" long.

MOUSER STOCK NO.	OK Industries Part No.	Fig.	Description	Price Each
<b>801-KR-260</b>	KR-260	I	R-4601 (red), R-4602 (blue), R-9461 (yellow)	276.86 263.02

## PIN EXTRACTOR TOOL

A plunger style pin extractor for pushing pins out from behind the connector blocks for contact sizes 16-20. 3" long.

MOUSER STOCK NO.	OK Industries Part No.	Fig.	Description	Price Each	
				1	5
<b>801-R5926</b>	R-5926	J	Pin Extractor Tool	12.32	11.70

## ALIGNMENT TOOLS

### Tool Kit

This 5 piece pocket kit contains a selection of the most popular non-conductive tools for aligning and adjusting components. Supplied in an easy to carry vial.

MOUSER STOCK NO.	OK Industries Part No.	Fig.	Kit Includes:	Price Each	
				1	12
<b>801-TK-AT5</b>	TK-AT5	K	Trimpot, Alignment 2 in 1 tool, Spudger, Orange Stick, Probe Pick	7.97	7.57

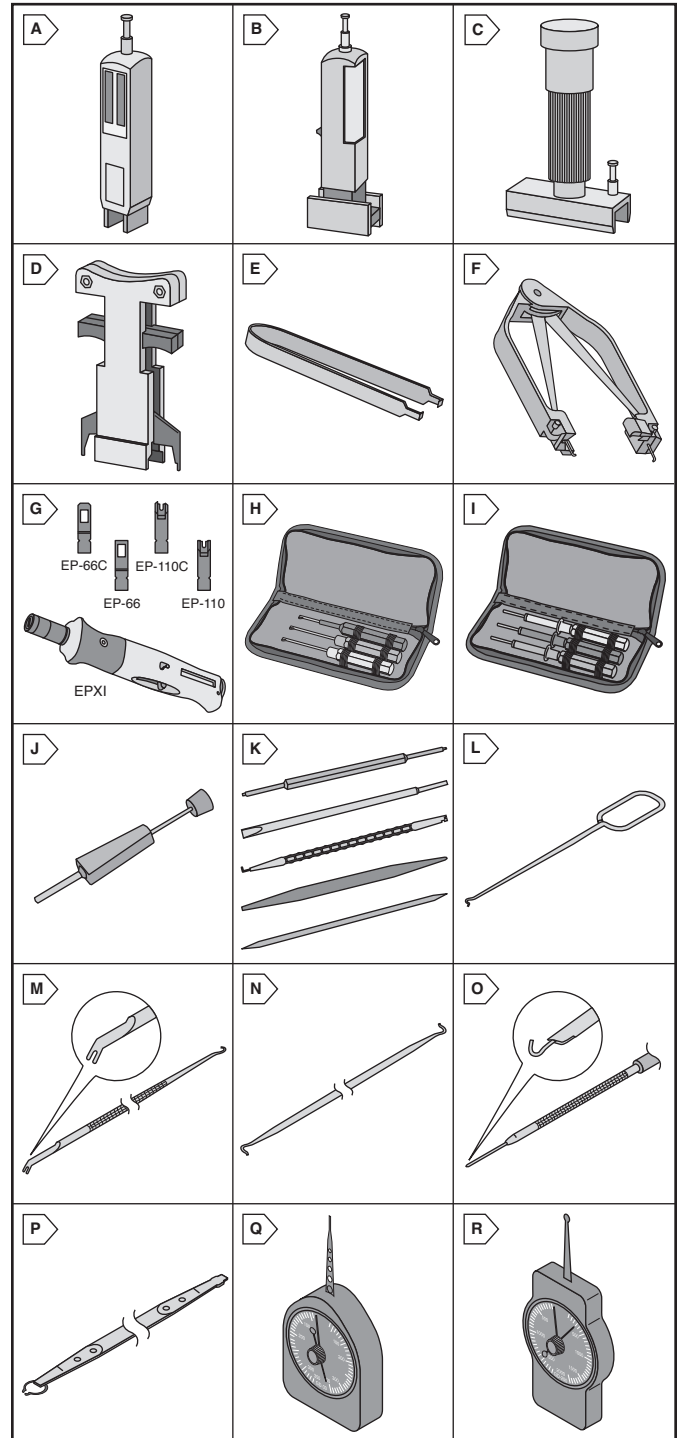
### Spring Hooks

MOUSER STOCK NO.	OK Industries Part No.	Fig.	Description	Price Each	
				1	12
<b>801-M-120</b>	M-120	L	Pull hook with looped handle 6" long	3.24	3.02
<b>801-M-125</b>	M-125	L	Push hook with looped handle 6" long	3.24	3.02
<b>801-M-130/SX</b>	M-130/SX	M	Pull hook & lifter w/knurled grip 8" long	3.57	3.33
<b>801-M-137</b>	M-137	N	Push & Pull 2 sided hook 7" long	3.24	3.02
<b>801-M-145</b>	M-145	O	Captive spring hook. 7" long	9.05	8.45

### Clip Setter

This tool is used for setting and withdrawing 1.5mm and up E & C Clips. One end of the tool has a hook with leaf spring tension for removing the clip. Other end of the tool has leaf spring for holding clip in position to insert. Narrow shape allows access to confined places. This tool is 6 3/4" long, .275" wide and 1/16" thick.

MOUSER STOCK NO.	OK Industries Part No.	Fig.	Description	Price Each	
				1	5
<b>801-CS-1022</b>	CS-1022	P	Clip Setter	14.60	13.87



## TENSION GAUGES

These Gauges are produced in two sizes and a total of 11 different ranges. They offer extreme precision and durability. The measuring springs are made of hard tempered annealed beryllium copper. Dial is protected by unbreakable glass. Packaged in rigid, fitted plastic case to protect instrument.

MOUSER STOCK NO.	OK Industries Part No.	Fig.	Range in Grams	Graduation in Grams	Price Each	
					1	5
<b>801-GD-1</b>	GD-1	Q	0-10	.25	165.10	156.85
<b>801-GD-3</b>	GD-3	Q	4-35	1.00	165.10	156.85
<b>801-GD-5</b>	GD-5	Q	5-50	1.00	165.10	156.85
<b>801-GD-10</b>	GD-10	Q	10-100	2.00	165.10	156.85
<b>801-GD-15</b>	GD-15	Q	15-150	5.00	165.10	156.85
<b>801-GD-25</b>	GD-25	Q	30-250	10.00	165.10	156.85
<b>801-GD-30</b>	GD-30	Q	40-350	10.00	165.10	156.85
<b>801-GD-50</b>	GD-50	R	60-500	20.00	332.48	315.85
<b>801-GD-100</b>	GD-100	R	100-1000	25.00	332.48	315.85
<b>801-GD-200</b>	GD-200	R	200-2000	50.00	332.48	315.85
<b>801-GD-400</b>	GD-400	R	400-4000	100.00	332.48	315.85